



Beachsweep 2014

The Rutherford Beach cleanup was held in conjunction with the Cameron Parish beachsweep, both of which are part of the International Coastal Cleanup sponsored by Ocean Conservancy. On Sept. 20, 40 volunteers participated in the Rutherford beach cleanup. Approximately four miles of beach was cleaned of debris by teams of three volunteers. Each team had one member filling out a tally sheet, keeping track of the type of debris picked up. A total of 106 bags of trash were collected for a total weight of approximately 3,500 pounds, which equates to nearly 1,000 pounds per mile.

After the cleanup, all volunteers were treated to hamburgers, hot dogs, chips and drinks provided by Ronnie's Pit Stop. During lunch, there was a discussion about where this marine debris comes from. Plastic is the most common material found on the beaches.

The Mississippi River watershed, which drains 41 percent of the North American Continent dumps into the Gulf in eastern Louisiana; the Atchafalaya, Vermillion Teche, and Mermentau Rivers also dump in east of Cameron. These rivers carry trash and debris. Plastic is very buoyant and floats from drainage ditches, bayous, and canals to rivers and eventually into the Gulf. The prevailing current along the Louisiana coast is from east to west, carrying the debris along the Louisiana coast where it is deposited by wave and wind action.

Door prizes were drawn and handed out. A special award was given to the most unusual item found, which was a neck brace. All volunteers received a 2014 Beachsweep beach towel. Special thanks to Nat Griffith for maintaining corporate sponsorships, distribution of supplies and making arrangements for catering.

- **Kevin A. Savoie**

SXSWEco 2014

LSU students recently went to learn more about sustainability at a conference in Texas. This is their summary of the event.

The live music capital of the world was a perfect setting for South by Southwest Eco, a three-day convention all about conservation and sustainability from Oct. 6-8.



A Joint Publication of Louisiana Sea Grant and LSU AgCenter



SXSWEco took place at the Austin Convention Center, Austin, TX, and at the surrounding venues nearby in the heart of downtown. SXSWEco was an opportunity for new groups to show off their start-up ideas and plans to get the big break. For established companies, it was an opportunity to showcase their company's sustainability factor during the exhibition. Then, for attendees, SXSWEco was an opportunity to hear some of the greatest scientists, developers, TV personalities and leaders talk during the sessions. Even for those who couldn't attend in person, many of the talks were streamed online.

Each day had a keynote speaker, and the most notable of the three speakers this year was Dr. Sylvia Earle, founder of Mission Blue. Her talk was titled "Sustainable Seas: The Vision and the Reality." Earle described the magnitude of human impacts on our oceans, a place she considers her real home. She started with a simple statement, "No blue, no green. No oceans, no life."

South By Southwest Eco was a great place to learn about conservation and innovation, all while being surrounded by inspiration and recyclable bins in every corner. For more information, please visit www.sxsweco.com.

- **Angie Nguyen**

Get Out and Fish Louisiana! Launches in Lafayette

The Louisiana Department of Wildlife and Fisheries (LDWF), in partnership with the City of Lafayette, will launch its new Get Out and Fish! Program on Saturday, Nov. 15 at Girard Park in Lafayette. LDWF biologists will demonstrate fishing fundamentals including bait and tackle selection tips to fish identification. Other activities will include knot tying, casting practice and an interactive mobile touch tank. LDWF's mascot, Robbie the Redfish, will make appearances throughout the day to greet attendees and take photographs.

Fishing competition categories include heaviest catfish and heaviest "other" fish. Age divisions include Little Angler (ages 10 and under), Junior Angler (ages 11-15) and Adult Angler (ages 16 and older). Prior to the event, Girard Park Pond will be stocked with adult channel catfish, so don't forget to bring your own gear, bait and an ice chest to keep your fish. Anglers 16 and older must possess a valid Louisiana fishing license.

The event is free, and the first 100 registrants in attendance will receive a complimentary rod and reel, courtesy of Pure Fishing, and a goody bag. In addition, every participant will be entered into raffle drawings throughout the day for a chance to win prizes from sponsors including Raising Canes, Louisiana Nursery, Home Depot, Buckfins-N-Feathers, Cajun Guns and Tackle and others. Lunch will be provided courtesy of the Beaver Club of Lafayette. Pre-registration is available online at www.wlf.la.gov/getoutandfish.

LOUISIANA REGULATIONS

Oyster Season Delayed in Portion of Public Seed Grounds

LDWF has delayed the oyster season in a portion of the public oyster seed grounds until further notice in an effort to protect recently settled young oysters referred to as spat. The delay includes that area of the public oyster seed grounds east of the Mississippi River and north of the Mississippi River Gulf Outlet, including Lake Borgne and Mississippi Sound. The oyster season was originally set to open in this area on Oct. 20. Protection of the oyster spat is in the long-term best interest of oyster conservation in this area of the public oyster seed grounds as they represent the future oyster resource in an area where oyster stocks continue to be low and spatfall has remained below normal.

King Mackerel

The commercial season for king mackerel in Louisiana waters will close at noon on Friday, Nov. 7, 2014. The closure was made based on data gathered by LDWF biologists and the National Marine Fisheries Service, that the annual quota for king mackerel of 1.07 million pounds for the western zone of the Gulf of Mexico would soon be met. The commercial fishing season for king mackerel closed in federal waters at noon on Oct. 17.

While there are relatively few king mackerel harvested or targeted by Louisiana recreational anglers, a substantial commercial fishery does exist, which typically lands 800 to 900 thousand pounds annually at Louisiana ports. A significant portion of the king mackerel landed in Louisiana ports is shipped to markets in the northeast United States.

GULF OF MEXICO REGULATIONS

Changes to Regulations for the Red Snapper and Grouper-Tilefish Individual Fishing Quota Programs

NOAA Fisheries announces a new rule, effective Oct. 27, 2014, which makes changes to the Gulf of Mexico reef fish fishery. The rule includes administrative revisions to the commercial red snapper and grouper-tilefish Individual Fishing Quota (IFQ) programs that improve enforcement, monitoring, and administration, and clarifies existing regulatory requirements. The final rule makes numerous changes to requirements for landing notifications, offloading, landing transactions, and administrative changes. For detailed information on the final rule please refer to the Frequently Asked Questions on the NOAA Fisheries website. Electronic copies of the final rule and frequently asked questions may be obtained from the NOAA Fisheries Catch Share website.

Lagniappe Fisheries Newsletter

Editor: Julie Anderson Lively

Web coordinator: Melissa Castleberry

Copy editor: Roy Kron

Layout/design: Jessica Schexnayder

Gulf Council Update - October 2014

The Gulf of Mexico Fishery Management Council met in Mobile, AL, Oct. 20-23, to discuss a number of fishery issues, including recreational red snapper sector separation and red snapper regional management. Here are a few highlights of the actions taken by the council.

Recreational Red Snapper Sector Separation: Reef Fish Amendment 40 considered dividing the recreational red snapper sector into two distinct components - a private angling component and a for-hire component. The council approved sector separation after adding a three-year sunset provision.

Red Snapper Regional Management: The council resumed discussions on Reef Fish Amendment 39 - Regional Management of Recreational Red Snapper. This amendment considers dividing the federal recreational red snapper quota among states and giving them authority to set some of their allowing for own management measures for red snapper to vary by state. The most recent version of the document can be viewed here - <http://gulfcouncil.org/docs/amendments/Regional%20Management%20Red%20Snapper.pdf>.

Greater Amberjack: This summer, the council determined that greater amberjack did not meet the 10-year rebuilding plan that ended in 2012, and the stock continues to be overfished and experiencing overfishing. During its October meeting, the council reviewed options for management measures to ensure that the stock is rebuilt and the mandates of the Magnuson-Stevens Act are met.

Recreational Red Grouper Bag Limits: The council adjusted the bag limit to two-fish per person, per day, to reduce the likelihood of in-season quota closures.

Shrimp: The council took final action on Shrimp Amendment 16, which adjusts the annual catch limit and accountability measures for royal red shrimp. The council also reviewed a scoping document for Shrimp Amendment 17, which will address the pending expiration of the moratorium on federal shrimping permits.

Gag: A stock assessment completed this summer discovered that the gag stock is not overfished or experiencing overfishing. The council's Scientific and Statistical Committee (SSC) recommended an increase in the gag ABC from 2,820,000 pounds to 3,070,000 pounds in 2015.

Fish Gear Coordinates

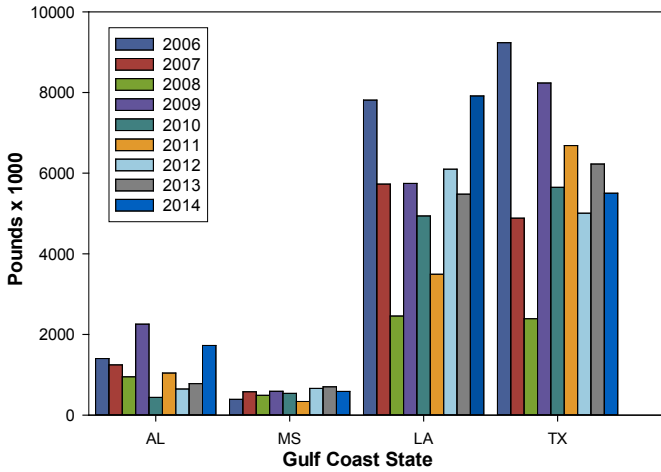
In accordance with the provisions of R.S. 56:700.1 et. seq., notice is given that 0 claims in the amount of \$.00 were received for payment during the period Sept 1-30, 2014.

There were 0 paid and 0 denied.

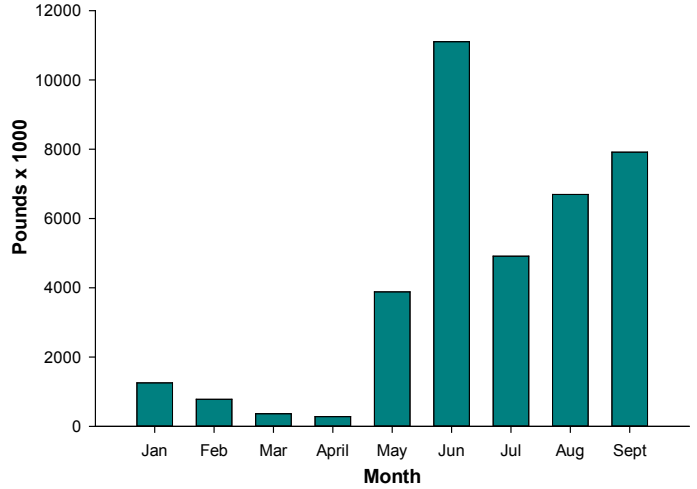
Louisiana Shrimp Watch

Louisiana specific data portrayed in the graphics are selected from preliminary data posted by NOAA on its website. All data portrayed are subject to final revision and approval by NOAA. Shrimp landings are ex-vessel prices, inclusive of all species harvested. Missing, inadequate or withheld reports are portrayed as “zero” in these graphics. Price graphics reflect central Gulf states only (Texas and Florida are reported independently). For more information, please refer to: www.st.nmfs.noaa.gov/st1/market_news/index.html.

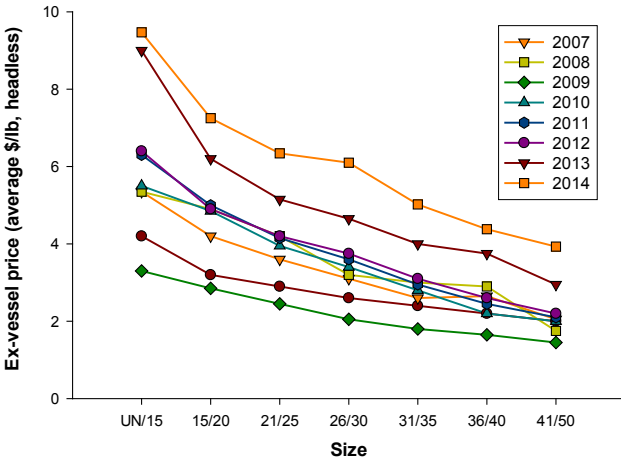
September Shrimp Harvest



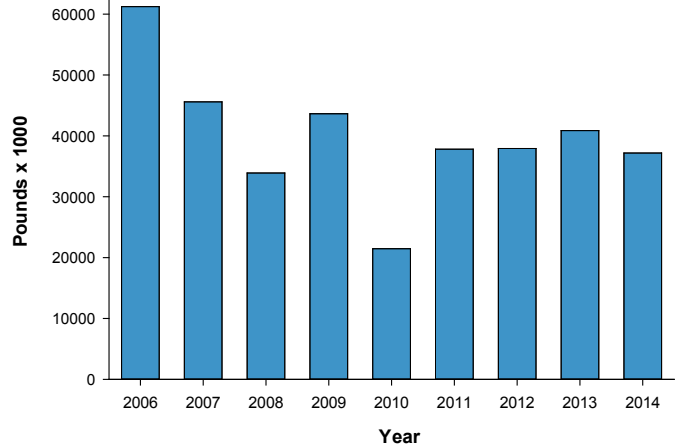
Louisiana 2014 Shrimp Harvest



September 2014 Northern GoM Shrimp Prices



Louisiana Year to Date Shrimp Harvest January- September



The Gumbo Pot

Recipe courtesy of *Louisiana Kitchen & Culture*. For more recipes or to subscribe to their magazine or free newsletter, please visit <http://louisiana.kitchenandculture.com/>

Phyllo Cups with Crabmeat Filling

Ingredients:

1 sheet phyllo pastry
Melted butter

For the filling:

12 ounces Louisiana crabmeat
1/2 red bell pepper, diced
1/2 green bell pepper, diced
2-3 scallions, diced
1 small red chili pepper, diced
1/2 clove garlic, chopped

For the sauce:

5 tablespoons mayonnaise
1/2 teaspoon curry powder
2 tablespoons light soy sauce
1 dash limejuice
Salt (preferably kosher or sea)
Freshly ground black pepper
1 tablespoon chopped herbs (dill, chives, parsley)

Plus:

1 tablespoon chopped chives
Dill sprigs

Method:

Carefully spread out the phyllo sheet on a work surface and brush on a thin coating of melted butter. Cut pastry into 2 1/2-inch squares. Brush muffin tin with melted butter. Place 3 phyllo squares in each muffin cup and press pastry down so you can fill it. Make sure they overlap a bit and the corners stand up straight. Bake pastry in an oven preheated to 350F for 6 - 8 minutes until golden brown. Remove from oven, cool, and carefully remove from muffin tin. For the filling, combine all prepared filling ingredients with the crabmeat. For the sauce, thoroughly mix all ingredients and pour over the crabmeat mixture. Fill pre-baked phyllo cups, sprinkle with chives and garnish with dill. Serve immediately.



Photo courtesy of Louisiana Kitchen & Culture

If you have a favorite seafood recipe that you would like to share, please send it to Julie Lively janderson@agcenter.lsu.edu for inclusion in future issues.



For more information, contact your local extension agent:

Thu Bui – Assistant Extension Agent, Fisheries
St. Mary, Iberia, and Vermilion Parishes
St. Mary Parish Court House
500 Main Street Rm. 314
Franklin, LA 70538-6199
Phone: (337) 828-4100, ext. 300
Fax: (337) 828-0616
tbui@agcenter.lsu.edu

Carol D. Franze – Associate Area Agent
Southeast Region
21549 Old Covington Hwy
Hammond, LA 70403
Phone: (985) 543-4129
cfranze@agcenter.lsu.edu

Albert 'Rusty' Gaudé – Area Agent, Fisheries
Jefferson, Orleans, St. Charles and St. John Parishes
Phone: (504) 433-3664
agaude@agctr.lsu.edu

Twyla Herrington – Associate Area Agent, Plaquemines Parish
479 F. Edward Hebert Blvd., Suite 201
Belle Chasse, LA 70037
Phone: (504) 433-3664
Fax: (504) 392-2448
therrington@agcenter.lsu.edu

Thomas Hymel – Watershed Educator
Iberia, St. Martin, Lafayette, Vermilion,
St. Landry, & Avoyelles Parishes
Phone: (337) 276-5527
thymel@agctr.lsu.edu

Alan Matherne – Area Agent (Fisheries & Coastal Issues)
Terrebonne, Lafourche, and Assumption Parishes
511 Roussell Street
Houma, LA 70360
Phone: (985) 873-6495
amatherne@agcenter.lsu.edu

Kevin Savoie – Area Agent (Southwest Region)
Natural Resources-Fisheries
Phone: (337) 475-8812
ksavoie@agctr.lsu.edu

Mark Shirley – Area Agent (Aquaculture & Coastal Resources)
Jefferson Davis, Vermilion, Acadia, St. Landry, Evangeline,
Cameron, Calcasieu, Lafayette, Beauregard, & Allen Parishes
Phone: (337) 898-4335
mshirley@agctr.lsu.edu

Research and Extension Programs
Agriculture
Economic/Community Development
Environment/Natural Resources
Families/Nutrition/Health
4-H Youth Programs

We would like to hear from you! Please contact us regarding fishery questions, comments or concerns you would like to see covered in the Lagniappe. Anyone interested in submitting information, such as articles, editorials or photographs pertaining to fishing or fisheries management is encouraged to do so.

Please contact Lagniappe editor Julie Anderson Lively at janderson@agcenter.lsu.edu.

Julie A. Anderson
Assistant Professor
LSU Agcenter & Louisiana Sea Grant
114 RNR Building
Baton Rouge, LA 70803
Phone: 225-578-0771
Fax: 225-578-4227
janderson@agcenter.lsu.edu