



Professionalism Program for New Entrants into Louisiana Crab Fishery

A new professionalism program for new entrants into the Louisiana crab fishery will begin this fall. This program was designed in close cooperation with the Louisiana Department of Wildlife and Fisheries (LDWF) and the Louisiana Crab Task Force.

Requirements needed to complete the program include:

- Education in the proper fishing techniques necessary for the health and sustainability of crabs; proper techniques for the best capture and presentation of the crabs for marketability
- Proper instructions regarding the placement, tending and maintenance of crab traps to reduce potential conflicts with other user groups
- Authorizes the program to include a mandatory apprenticeship program



Louisiana Blue Crab. Photo credit: Julie Anderson

To view the notice of intent in its entirety, http://www.wlf.louisiana.gov/sites/default/files/pdf/document/37878-noi-crab/final_noi_crab_prof_6_19_14.pdf

Fishermen Advised of Dangers of *Vibrio vulnificus* Bacteria

According to the Centers for Disease Control and Prevention (CDC), *V. vulnificus* can cause an infection of the skin when open wounds are exposed to warm seawater; these infections may lead to skin breakdown and ulceration. It is often called a “flesh eating bacterium.” Persons who are immunocompromised are at higher risk for invasion of the organism into the bloodstream and potentially fatal complications. *V. vulnificus* bloodstream infections are fatal about 50 percent of the time.

Louisiana Department of Health and Hospitals (LDHH) data indicates there are about 10 to 15 cases per year in the state. The majority gets the infection from skin contact with seawater (80 percent) or consumption of raw seafood (20 percent).

Fishermen in saltwater should carry with them basic disinfectant (chlorine bleach mixed 1 part bleach to 4 parts fresh water, or tincture of iodine or antibiotic ointment) and use if skin is punctured while handling fishing tackle, bait or fish. Wade fishermen who injure themselves, breaking the skin and exposing a wound to saltwater, need to take the same precautions.

If ulceration and rapid swelling around the wound area are noted, seek attention by a physician as soon as possible is advised. For more information, visit <http://vm.cfsan.fda.gov> , or <http://www.cdc.gov/health/diseases.htm>.

Consistency with Federal Regulations

The state has a notice of intent to modify the regulations on reef fishes. The proposed rule would remove from state regulations several species that were previously removed from federal management. These are species that are seldom harvested, and even less often targeted. The result of the proposed change to state regulations would be to have consistent regulations on these species for both state and federal waters.

The proposed rule would remove dog and mahogany snapper and schoolmaster from the 10 fish per person recreational creel limit for reef fish and size limit. That daily aggregate creel limit would still be in place for queen, mutton, blackfin, cubera, gray (mangrove), silk, yellowtail and wenchman snappers. The proposed rule would also remove the eight-inch minimum size for black seabass for both commercial and recreational harvesters.

It would remove blackline tilefish and anchor tilefish from the 20 fish per person aggregate recreational creel limit for reef fish. That daily aggregate creel limit would still be in place for vermilion and lane snapper, gray triggerfish, almaco jack, goldface tilefish, tilefish and blueline tilefish.

It would remove red hind, rock hind and misty grouper from the four fish per person aggregate creel limit for reef fish. That daily aggregate creel limit would still be in place for speckled hind (limit one within the aggregate), black, red, snowy, yellowedge, yellowfin, yellowmouth, warsaw (limit one within the aggregate), and gag groupers, and scamp. It would also remove the current recreational closed season for rock and red rind, currently Feb. 1 through March 31 of each year.

Interested persons may submit comments relative to the proposed rule prior to Sept. 4, 2014 to Jason Adriance, Office of Fisheries, Department of Wildlife and Fisheries, 2000 Quail Drive, Baton Rouge LA 70808 or by e-mail to jadriance@wlf.la.gov.

Public Hearing on Sector Separation

The Gulf of Mexico Fishery Management Council has scheduled a series of public hearings around the Gulf of Mexico beginning Monday, Aug. 4, 2014 through Tuesday, Aug. 19, 2014. The purpose of the meetings is to get public input on Reef Fish Amendment 40 - Sector Separation. Amendment 40 examines dividing of the recreational red snapper quota into a private angling sector and federal for-hire sector.

All meetings will begin at 6 pm. local time and will conclude no later than 9 p.m. In Louisiana, the hearing will be Monday, Aug. 18, 2014, at Hyatt Place Baton Rouge, 6080 Bluebonnet Blvd., Baton Rouge, LA.

Saltwater Fishing License Increase

For the first time in 14 years, LDWF will increase its license fees for recreational, saltwater fishing from \$15 to \$22.50 on Aug. 1. The increase places Louisiana firmly in the middle of saltwater license fees among Gulf states. The department expects to generate an additional \$2.25 million annually, which will be used to fund the agency's LA Creel Program.

LDWF recognized the shortcomings of the federally established Marine Recreational Information Program to provide the best available data to fisheries managers and began collecting their own recreational statistics through a new data collection program called LA Creel. Since federal officials do not recognize LA Creel as MRIP compatible, more than \$500,000 typically used to fund recreational surveying in Louisiana was pulled, leaving LDWF responsible for the financial burden of data collection.

Louisiana Sea Grant UROP Research Projects Announced

The Louisiana Sea Grant College Program established the Undergraduate Research Opportunities Program (UROP) in 1992. It provides talented undergraduate students interested in pursuing advanced studies in marine-related disciplines with hands-on research experience. Projects receive funding in the range of \$1,500-\$2,500. UROP is coordinated by Matt Bethel, LSG assistant executive director of research. Katie Lea is the co-principal investigator.

"UROP is a wonderful opportunity for undergraduates," Bethel said. "Participating in the program can increase their competitiveness as graduate students and help them make career-related decisions. It also allows students to establish a working relationship with a faculty mentor."

Lagniappe Fisheries Newsletter

Editor: Julie Anderson Lively

Web coordinator: Melissa Castleberry

Copy editor: Roy Kron

Layout/design: Jessica Schexnayder

The following students were selected for 2014:

Lily Armstrong Davies, Ecology and Evolutionary Biology major, Tulane University
 Faculty Advisor: Jordan Karubian, Department of Ecology and Evolutionary Biology.
Use of GPS telemetry to examine pelican-menhaden interactions in the Gulf coast

Evan Geerts, Civil Engineering major, McNeese State University
 Faculty Advisor: Dimitrios Dermisis; Department of Chemical, Civil & Mechanical Engineering. *Testing levee structures with alternative substrate material in southwest Louisiana to mitigate storm surges and protect the shoreline*

Tyler Harris, Biology major, Louisiana State University
 Faculty Advisor: Aixin Hou, Department of Environmental Sciences, School of Coast and Environment. *Quantifying the expression of oil-degrading functional genes in Louisiana saltmarsh sediments*

Jonathan Lambert, Coastal Environmental Science major, LSU
 Faculty Advisor: Kam-Bui Liu, Oceanography and Coastal Sciences, School of Coast and Environment. *Characterization of Historical Sedimentation and Coupled Natural-Human Dynamics in a Vulnerable Region of Louisiana Coast*

Shawn Marcell, Pre-Medicine major, Nicholls State University
 Faculty Advisor: Rajkumar Nathaniel, Department of Biological Science. *Characterization of Blue Crab Immune Responses*

Corey Melancon, Pre-Medicine major, Nicholls State University
 Faculty Advisor: Angela Corbin, Department of Biological Science. *Bacteriophage therapy for the control of Vibriosis in shrimp aquaculture*

Katherine Parenteau, Chemistry major, Southeastern Louisiana University
 Faculty Advisor: Phillip Voegel, Department of Chemistry and Physics. *Removal of Hydrocarbons from Natural Waterways by Rangia Clams*

Alexandra Pasch, Environmental Science major, University of Louisiana at Lafayette
 Faculty Advisor: Jenneke M. Visser, School of Geosciences. *Do salinity and fertilization affect Sagittaria lancifolia growth?*

Madison Stark, Biology/Pre-medicine major, Loyola University
 Faculty Advisor: Don Hauber, Department of Biological Sciences. *Investigating Rapidly Colonizing Typha in the Mississippi River "Balize" Delta*

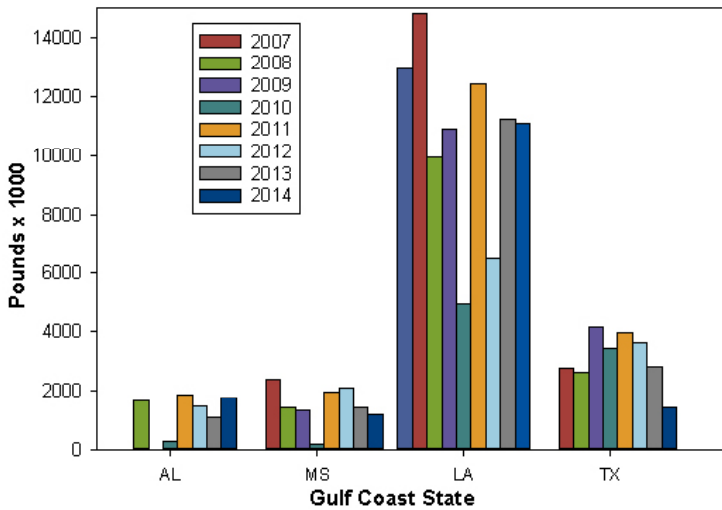
Jacob Thompson, Environmental and Sustainable Resources major, ULL
 Faculty Advisor: Jenneke M. Visser, School of Geosciences. *The Effects of Increased Nutrient Loads and Nutria Herbivory on Panicum hemitomon Biomass*

Erin Williams, Environmental Engineering major, LSU
 Faculty Advisor: M. Teresa Gutierrez-Wing, Department of Civil and Environmental Engineering. *Effect of Wavelength on the Growth Rate and Lipid Production of a Cyanobacteria/Microalgae Co-Culture*

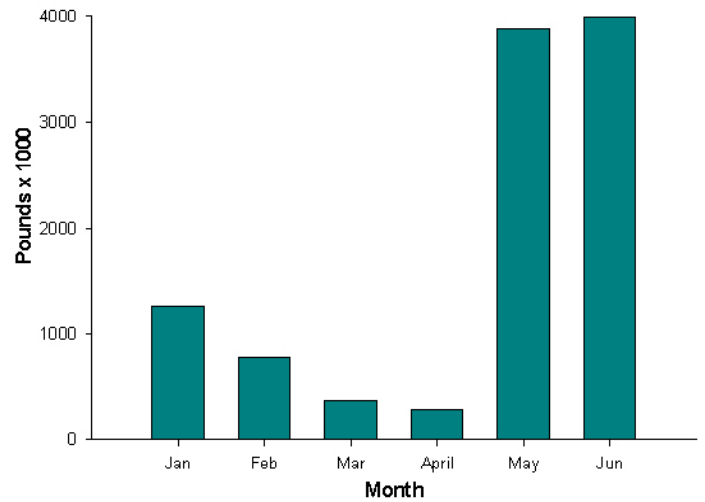
Louisiana Shrimp Watch

Louisiana specific data portrayed in the graphics are selected from preliminary data posted by NOAA on its website. All data portrayed are subject to final revision and approval by NOAA. Shrimp landings are ex-vessel prices, inclusive of all species harvested. Missing, inadequate or withheld reports are portrayed as “zero” in these graphics. Price graphics reflect central Gulf states only (Texas and Florida are reported independently). For more information, please refer to: www.st.nmfs.noaa.gov/st1/market_news/index.html.

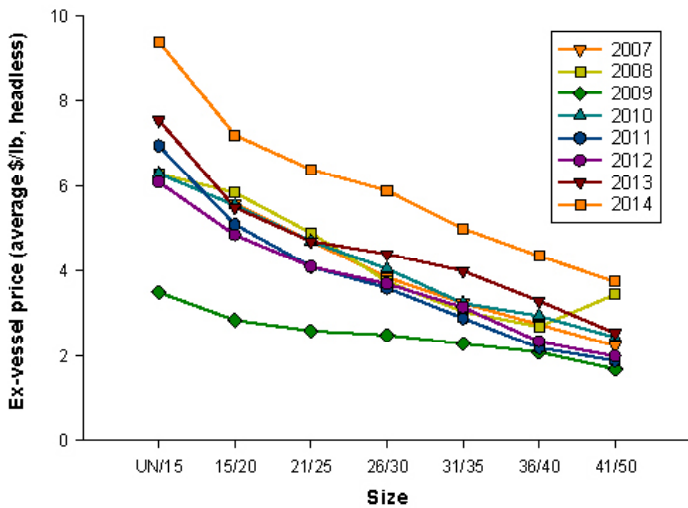
June Shrimp Harvest



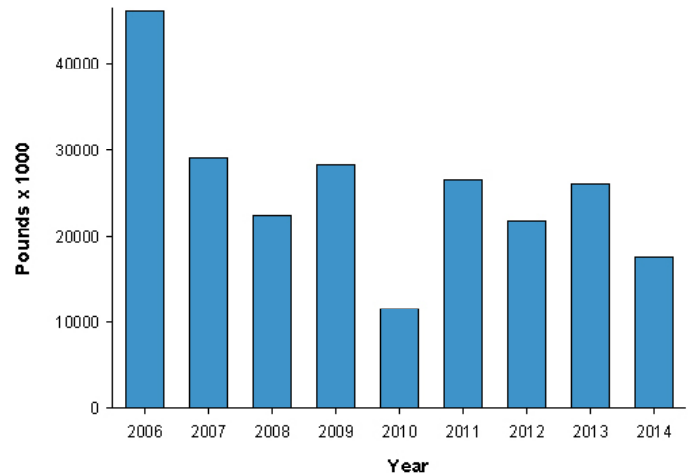
Louisiana 2014 Shrimp Harvest



June 2014 Northern GoM Shrimp Prices



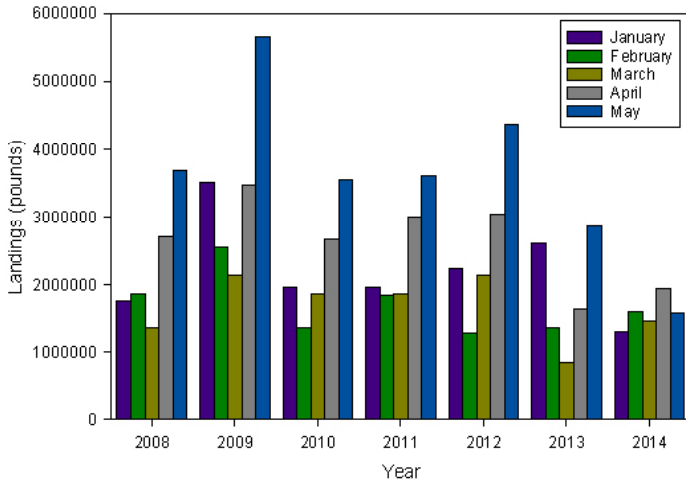
Louisiana Year to Date Shrimp Harvest January- June



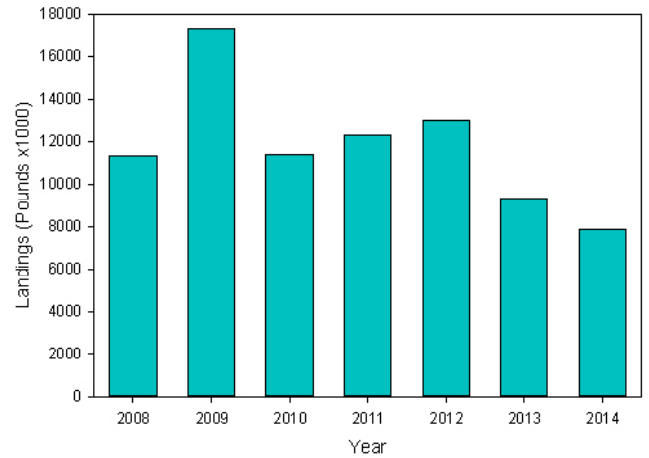
Louisiana Blue Crab Watch

In addition to the monthly shrimp data, we will begin sharing the Louisiana state data based on preliminary state landings data. All data portrayed are subject to final revision and approval. Data for the most current year is likely to be revised as additional trip tickets are analyzed.

Monthly Louisiana Blue Crab Landings



Louisiana Year to Date Blue Crab Harvest January-May



Fish Gear Incident Sites

In accordance with the provisions of R.S. 56:700.1 et. seq., notice is given that six claims in the amount of \$21,303.87 were received for payment during the period June 1, 2014 - June 30, 2014. There were six paid and zero denied.

Latitude/Longitude Coordinates, in Degree Decimal Minutes, of reported underwater obstructions are:

29 05.306	89 0.796	PLAQUEMINES
29 09.360	90 05.660	LAFOURCHE
29 24.338	89 58.193	LAFOURCHE
29 44.629	89 26.850	SAINT BERNARD
29 49.968	89 40.873	SAINT BERNARD

A list of claimants and amounts paid can be obtained from Gwendolyn Thomas, Administrator, Fishermen’s Gear Compensation Fund, P.O. Box 44277, Baton Rouge, LA 70804 or you can call (225) 342-9388.



For more information, contact your local extension agent:



Thu Bui – Assistant Extension Agent, Fisheries
St. Mary, Iberia, and Vermilion Parishes
St. Mary Parish Court House
500 Main Street Rm. 314
Franklin, LA 70538-6199
Phone: (337) 828-4100, ext. 300
Fax: (337) 828-0616
tbui@agcenter.lsu.edu

Carol D. Franze – Associate Area Agent
Southeast Region
21549 Old Covington Hwy
Hammond, LA 70403
Phone: (985) 543-4129
cfranze@agcenter.lsu.edu

Albert 'Rusty' Gaudé – Area Agent, Fisheries
Jefferson, Orleans, St. Charles and St. John Parishes
Phone: (504) 433-3664
agaude@agctr.lsu.edu

Twyla Herrington – Associate Area Agent, Plaquemines Parish
479 F. Edward Hebert Blvd., Suite 201
Belle Chasse, LA 70037
Phone: (504) 433-3664
Fax: (504) 392-2448
therrington@agcenter.lsu.edu

Thomas Hymel – Watershed Educator
Iberia, St. Martin, Lafayette, Vermilion,
St. Landry, & Avoyelles Parishes
Phone: (337) 276-5527
thymel@agctr.lsu.edu

Alan Matherne – Area Agent (Fisheries & Coastal Issues)
Terrebonne, Lafourche, and Assumption Parishes
511 Roussell Street
Houma, LA 70360
Phone: (985) 873-6495
amatherne@agcenter.lsu.edu

Kevin Savoie – Area Agent (Southwest Region)
Natural Resources-Fisheries
Phone: (337) 475-8812
ksavoie@agctr.lsu.edu

Mark Shirley – Area Agent (Aquaculture & Coastal Resources)
Jefferson Davis, Vermilion, Acadia, St. Landry, Evangeline,
Cameron, Calcasieu, Lafayette, Beauregard, & Allen Parishes
Phone: (337) 898-4335
mshirley@agctr.lsu.edu

Research and Extension Programs
Agriculture
Economic/Community Development
Environment/Natural Resources
Families/Nutrition/Health
4-H Youth Programs

We would like to hear from you! Please contact us regarding fishery questions, comments or concerns you would like to see covered in the Lagniappe. Anyone interested in submitting information, such as articles, editorials or photographs pertaining to fishing or fisheries management is encouraged to do so.

Please contact Lagniappe editor Julie Anderson Lively at janderson@agcenter.lsu.edu.

Julie A. Anderson
Assistant Professor
LSU Agcenter & Louisiana Sea Grant
114 RNR Building
Baton Rouge, LA 70803
Phone: 225-578-0771
Fax: 225-578-4227
janderson@agcenter.lsu.edu