

Without a Paddle?

Paddlefish get their unique name from their elongated spatula-like snout, which is called a rostrum. This rostrum accounts for a third of its total body length. The paddlefish is one of the largest freshwater fish in North America, reaching five feet in length on average, but they have been known to reach seven feet and 200 pounds. When they are first born, their backs are a pink color and their rostrum, or underbelly, is white. Once they reach 10 to 12 inches, their body color changes to a bluish grey and their underbelly becomes cream. Paddlefish can live up to 30 years, and as a species, paddlefish have been around for 400 million years.

These fish have similar body parts that resemble sharks, including their cartilaginous skeletons and forked tail fins. But they are not in the same taxonomic class. Their skin is smooth, and they lack scales and plates. Anglers in the southeast also call paddlefish spoonbill, spoonbill cat, spadefish, shovelfish and shovelbilled cat. Paddlefish make up the Polyodontidae family. Only two genera in this family have not gone extinct, one of them being the American Paddlefish.

The American Paddlefish (*Polyodon spathula*) is found in slow-flowing waters beside the Mississippi River, as well as numerous tributaries including the Missouri River, Ohio River, Yellowstone River, Wisconsin River, Des Moines River and Arkansas River systems. They need free-flowing rivers that have shallow pools with sandy, rocky bottoms that they use for spawning.

Paddlefish use electroreceptors found in their rostrum to detect weak electrical fields. This means that they use their snout as an antenna to detect any zooplankton. The rostrum also acts as a stabilizer during feeding. Like a wing of an airplane, the rostrum creates a lift to keep the fish's head in a stable position while they are moving through the water with their mouth open. Their meals usually include microscopic plants and animals called plankton.

- Brandy Malbrough

2014 Fishery Legislative Summary

Below is a summary of bills in the current 2014 regular legislative session pertinent to fisheries in the State of Louisiana “as of the March 31. Please visit the online blog for updated lists.”

For more information or details on any of the bills, please visit: <http://www.legis.la.gov/legis/BillSearch.aspx?sid=last>.

HB1082 – BISHOP: Increases the saltwater fishing license fee and dedicates the revenue to saltwater fisheries management and conservation.

<http://www.legis.la.gov/legis/ViewDocument.aspx?d=887615&n=Digest%20of%20HB1082%20Original>

HB913 – LEOPOLD. Creates the Louisiana Finfish Task Force.

[http://www.legis.la.gov/legis/ViewDocument.aspx?d=880254&n=HB913 Original](http://www.legis.la.gov/legis/ViewDocument.aspx?d=880254&n=HB913%20Original)

HB810 – HARRISON: Provides for freshwater diversions effects on fisheries.

[http://www.legis.la.gov/legis/ViewDocument.aspx?d=879668&n=HB810 Original](http://www.legis.la.gov/legis/ViewDocument.aspx?d=879668&n=HB810%20Original)

HB416 – LAMBERT: Assigns to the Wildlife and Fisheries Commission management responsibility for sustainability of freshwater and saltwater fisheries.

[http://www.legis.la.gov/legis/ViewDocument.aspx?d=876458&n=HB416 Original](http://www.legis.la.gov/legis/ViewDocument.aspx?d=876458&n=HB416%20Original)

HB440 – HARRISON: Relative to size and configuration of skimmer nets.

[http://www.legis.la.gov/legis/ViewDocument.aspx?d=877085&n=HB440 Original](http://www.legis.la.gov/legis/ViewDocument.aspx?d=877085&n=HB440%20Original)

SB344 – ALLAIN/HB1044 BISHOP: Provides for the Louisiana Catch and Cook Program within the Department of Wildlife and Fisheries, authorizes restaurants to receive and prepare any freshwater or saltwater recreational fish.

[http://www.legis.la.gov/legis/ViewDocument.aspx?d=878590&n=SB344 Original](http://www.legis.la.gov/legis/ViewDocument.aspx?d=878590&n=SB344%20Original)

SB246. MORRISH: Changes the line of demarcation of the inside and outside waters for purposes of shrimping.

U.S. Geological Survey Publication

USGS Scientific Investigations Map 3290: *Vegetation Types in Coastal Louisiana* in 2013 is now available online at <http://pubs.usgs.gov/sim/3290/>.

Wetshop 2014 Registration is Open

Dates: July 6-11, 2014

Location: LDWF Marine Research Lab, Grand Isle, La.

Application Deadline: May 20, 2014

Number of Participants: 20 teachers

Contact: Angela Capello, (318) 748-6914, acapello@wlf.la.gov

Registration fee: \$50.00

WETSHOP is a week-long, dynamic teacher workshop that allows teachers to work with educator/scientists to learn about Louisiana coastal wetlands, issues and history. The focus of the summer workshop is to create wetland stewards of teachers in order for them to educate co-workers and students in their home parishes about coastal land loss. Fifty-five professional contact hours will be accrued upon the completion of this wetland institute. Teacher stipend available for summer workshop and dissemination workshop during AY.

Workshop Highlights:

- Fisheries management; research trawling, seining
- Barrier islands and their role in coastal health
- Coastal Botany & Ornithology (visit Brown Pelican rookery)
- Water Quality Testing along fresh to salt water gradient
- Visit transitional Coastal Ecosystems
- Tour one of the largest oil ports in U.S.
- Visit coastal restoration site / Oil Spill impact sites
- Invasive Species (role in coastal land loss)

New Informational Site Helps Buyers Understand the Sustainability of Gulf Seafood

Seafood buyers and other interested parties now have access to a one-stop-shop for the information they need to be confident that seafood harvested from Louisiana and other Gulf state fisheries is sustainable. Launching at Seafood Expo North America, GulfFishInfo.org, or Gulf FINFO, gathers information from fisheries experts from across the Gulf states and puts easy to understand, science-based facts about Gulf state fisheries at the public's fingertips.

Lagniappe Fisheries Newsletter

Editor: Julie Anderson

Web coordinator: Melissa Castleberry

Copy editor: Roy Kron

Layout/design: Jessica Schexnayder



The Louisiana Department of Wildlife and Fisheries (LDWF) collaborated with counterparts in the other Gulf states, the Gulf States Marine Fisheries Commission, and NOAA Fisheries to develop FINFO. FINFO provides a platform for these authorities to communicate how they conserve and manage fisheries in Gulf state waters and complements NOAA's FishWatch.gov, which covers fisheries in federal waters.

FINFO profiles top Gulf fisheries, with information ranging from basics about species biology and habitat to how fisheries operate and how each state ensures these operations are sustainable. Through FINFO, users can quickly review the status of Gulf fisheries resources or dig deeper to understand the robust science and responsible management at work to ensure these resources are viable for generations to come.

LOUISIANA REGULATIONS

Possession Limit for Black Bass in Saltwater Areas of the State

The Louisiana Wildlife and Fisheries Commission adopted a Notice of Intent to increase the possession limit for black bass up to three times the daily limit in areas below the saltwater line: <http://www.wlf.louisiana.gov/fishing/saltwater-freshwater-line-0>.

This amendment is designed to allow fishermen to transport bass to the boat launch after being at a remote camp or on the water for multiple days at a time. An angler would be allowed to transport two times the daily creel limit if out for two consecutive days or three times the daily limit if out for three consecutive days.

Anglers would only be covered under this provision if they comply with the following:

- Anglers must hold and be in possession of a basic recreational fishing license.
- Anglers must be in possession of a receipt from a boat launch located south of the saltwater line that verifies the angler has been on the water for multiple consecutive days.
- Fish must be kept whole or whole gutted, and each day's catch must be packaged separately. Packages must be labeled with the angler's name, fishing license number, date caught, species of fish and number of fish.
- Anglers must only be in possession of his or her own fish.
- Anglers must not actively fish while transporting more than their daily creel limit.

This provision would only apply in areas south of the saltwater line.

To view the full notice, please visit <http://www.wlf.louisiana.gov/action-items>.

New Rules for Natural and Scenic Rivers System Now in Effect

New rules governing Louisiana's Natural and Scenic Rivers System, announced by the Louisiana Wildlife and Fisheries Commission (LWFC) in October 2013, become effective March 20, 2014. Recommendations to amend the existing rules were made by the Louisiana Department of Wildlife and Fisheries (LDWF). The new rules include:

- The use of a motor vehicle or other wheeled or tracked vehicle on a designated system stream is now prohibited, except for permitted uses and direct crossings by immediately adjacent landowners, lessees, and persons who have written permission from the landowner for non-commercial activities that do not significantly degrade the ecological integrity of the stream.
- Natural and Scenic Rivers System regulations now conform with the Louisiana Scenic Rivers Act relative to activities more than 100 feet from designated system streams that have potential to directly and significantly degrade the ecological integrity of a system stream may require a permit.
- A permit is now required for a moored houseboat or floating camp, except when moored to a legally permitted piling, pier or bulkhead or moored to trees using connections that do not damage the trees and with written permission of the owner of the trees. Legally moored houseboats with a permit or letter of certification from the parish health unit, verifying an approved sewerage disposal system is on board, would also be excepted.

To review the revised Title 76, Part IX, Sections 105, 115 and 117, go to <http://www.wlf.louisiana.gov/new-rule-changes> .

GULF OF MEXICO REGULATIONS

Gulf of Mexico Fishery Management Council to Meet in Baton Rouge

The Gulf of Mexico Fishery Management Council will meet April 7-10, 2014, at the Embassy Suites at 4914 Constitution Ave. Baton Rouge, La. 70808. Committee meetings will convene Monday morning at 8:30 beginning with the Administrative Policy Committee, which will review the Administrative Handbook and House Magnuson-Stevens Act Amendment. Next, the Budget/Personnel Committee will review the 2014 budget. At 1:30 the Sustainable Fisheries/Ecosystem Committee will address the SEDAR prioritization process and the definition of For-Hire Fishing. Before ending the day, the Mackerel Management Committee will meet.

Reef Fish Management Committee will meet all day Tuesday. The Shrimp Committee meets Wednesday beginning at 8:30 am. The Red Drum Committee will then convene to hear a summary of the Scientific and Statistical Committee Meeting and review the SEMAP Red Drum Working Group Proceedings. The Data Collection Committee will hear an update on the Commercial Logbook Pilot Project and discuss a For-Hire Electronic Data Reporting Program. Wednesday committee meetings will conclude with a summary of the Joint Shrimp/Ad Hoc Artificial Substrate Advisory Panel Meeting.

The full council will convene Wednesday at 11:15 am. At 1:30, pm the council will take public comment on the following:

- Final Action - Joint Mackerel Amendment 20B - Boundaries and Transit Provisions
- Final Action - Joint Framework Action to Increase Spanish Mackerel ACL
- Final Draft - Reef Fish Amendment 28 - Red Snapper Allocation

The council will also hear open public comment to give members of the public an opportunity to address the council on fishery issues that may not be on the agenda. Anyone wishing to speak must sign up prior to the comment period.

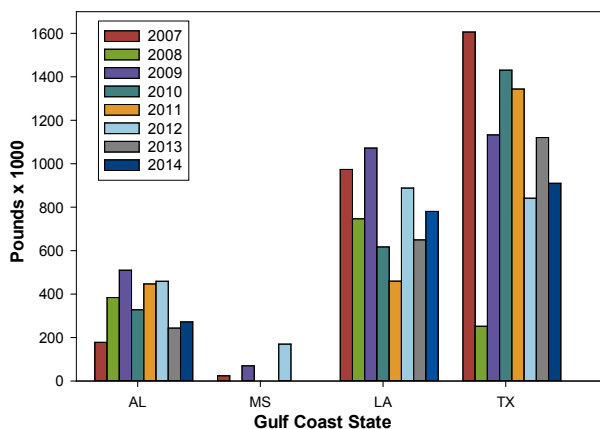
Beginning Thursday at 8:30 am, the council will deliberate and take action on committee recommendations made earlier in the week and conclude discussions at 3:45 pm.

For a copy of the detailed agenda, or to watch the meeting live, please visit http://gulfcouncil.org/council_meetings/index.php or call 888-833-1844. Briefing book materials can be downloaded from the Council FTP site at <http://ftp.gulfcouncil.org/?user=anonymous>.

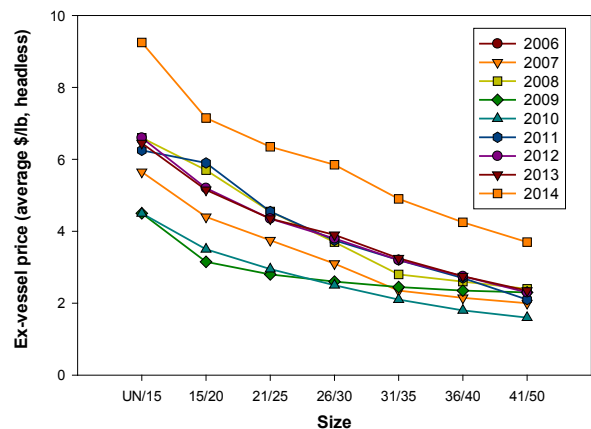
Louisiana Shrimp Watch

Louisiana specific data portrayed in the graphics are selected from preliminary data posted by NOAA on its website. All data portrayed are subject to final revision and approval by NOAA. Shrimp landings are ex-vessel prices, inclusive of all species harvested. Missing, inadequate or withheld reports are portrayed as “zero” in these graphics. Price graphics reflect central Gulf states only (Texas and Florida are reported independently). For more information, please refer to: www.st.nmfs.noaa.gov/st1/market_news/index.html.

February Shrimp Harvest

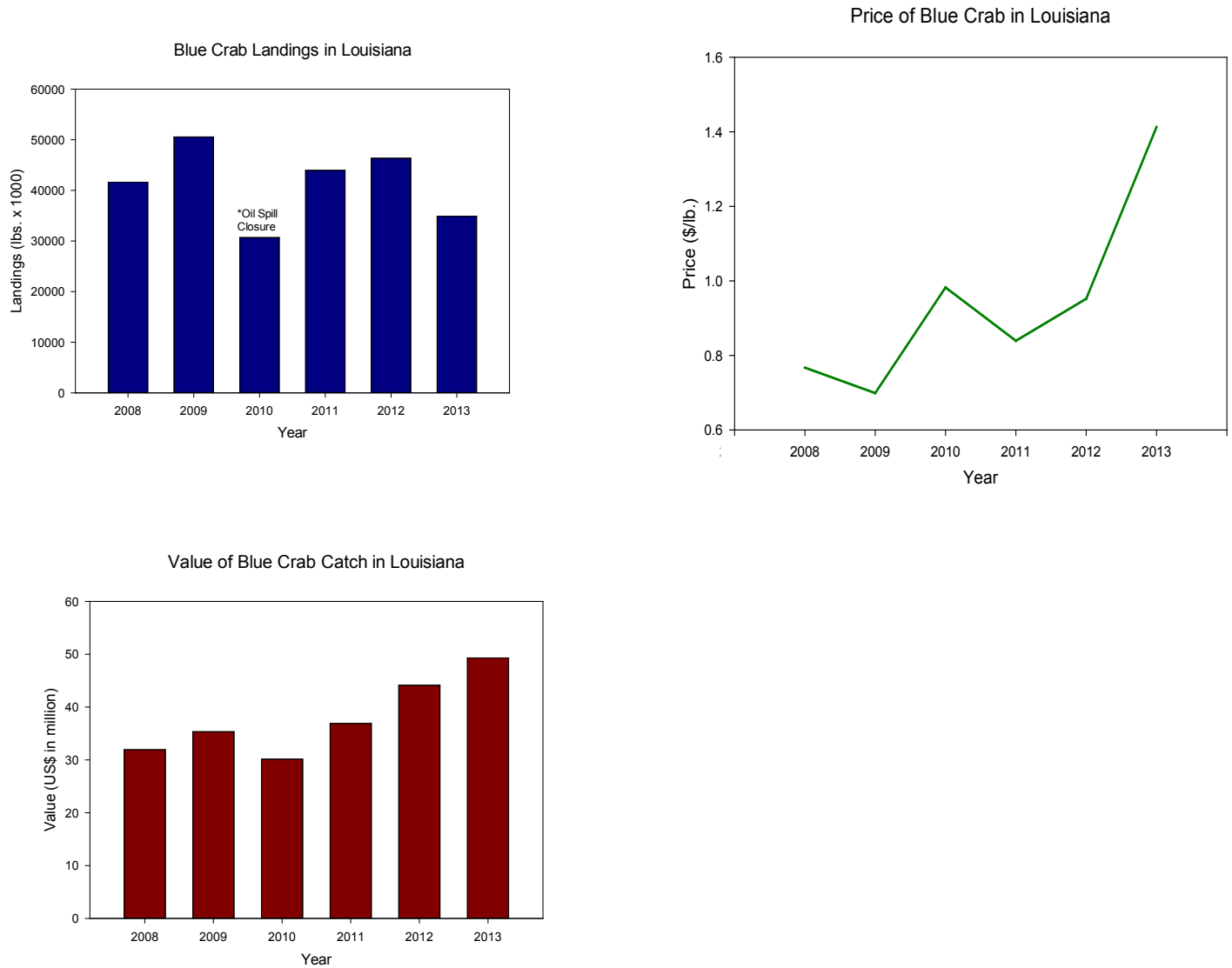


February 2014 Northern GoM Shrimp Prices



Louisiana Blue Crab Watch

In addition to the monthly shrimp data, we will begin sharing the Louisiana state data based on preliminary state landings data. All data portrayed are subject to final revision and approval.



Looking for more fisheries information?

In addition to the monthly newsletter, you can visit <http://louisianalagniappe.wordpress.com/> where we post more time sensitive information or other items that won't fit in the newsletter.

The Gumbo Pot

Recipe courtesy of *Louisiana Kitchen & Culture*. For more recipes or to subscribe to their magazine or free newsletter, please visit <http://louisiana.kitchenandculture.com/>

Crawfish Fritters

- 2 cups cooked Jasmine Rice
- 1 bunch green onions, finely chopped
- 1/2 bunch cilantro, finely chopped
- 1 roasted poblano pepper, seeded and skinned, finely chopped
- 1/2 cup piquillo peppers, finely chopped
- 2 tablespoons baking soda
- 2 pounds Louisiana crawfish tail meat
- salt and pepper
- 2 cups extra virgin olive oil
- 2 cups water
- oil for frying
- 1 cup mayonnaise
- 1/3 cup Sriracha sauce

Add all ingredients except water, oil for frying, Sriracha, and mayonnaise to a large bowl. Slowly add water stirring constantly, until fully incorporated. Refrigerate mixture for 30 minutes. Heat oil to 325°F. Using hands or a small scoop, form mixture into bite-size balls. Gently add fritters to oil and fry until golden brown, four to five minutes. Remove and place on paper towels to drain.

Mix mayonnaise and Sriracha sauce; serve as a dipping sauce with Crawfish Fritters.

If you have a favorite seafood recipe that you would like to share, please send it to Julie Anderson janderson@agcenter.lsu.edu for inclusion in future issues.



For more information, contact your local extension agent:



Thu Bui – Assistant Extension Agent, Fisheries
St. Mary, Iberia, and Vermilion Parishes
St. Mary Parish Court House
500 Main Street Rm. 314
Franklin, LA 70538-6199
Phone: (337) 828-4100, ext. 300
Fax: (337) 828-0616
tbui@agcenter.lsu.edu

Carol D. Franze – Associate Area Agent
Southeast Region
21549 Old Covington Hwy
Hammond, LA 70403
Phone: (985) 543-4129
cfranze@agcenter.lsu.edu

Albert 'Rusty' Gaudé – Area Agent, Fisheries
Jefferson, Orleans, St. Charles and St. John Parishes
Phone: (504) 433-3664
agaude@agctr.lsu.edu

Twyla Herrington – Associate Area Agent, Plaquemines Parish
479 F. Edward Hebert Blvd., Suite 201
Belle Chasse, LA 70037
Phone: (504) 433-3664
Fax: (504) 392-2448
therrington@agcenter.lsu.edu

Thomas Hymel – Watershed Educator
Iberia, St. Martin, Lafayette, Vermilion,
St. Landry, & Avoyelles Parishes
Phone: (337) 276-5527
thymel@agctr.lsu.edu

Alan Matherne – Area Agent (Fisheries & Coastal Issues)
Terrebonne, Lafourche, and Assumption Parishes
511 Roussell Street
Houma, LA 70360
Phone: (985) 873-6495
amatherne@agcenter.lsu.edu

Kevin Savoie – Area Agent (Southwest Region)
Natural Resources-Fisheries
Phone: (337) 475-8812
ksavoie@agctr.lsu.edu

Mark Shirley – Area Agent (Aquaculture & Coastal Resources)
Jefferson Davis, Vermilion, Acadia, St. Landry, Evangeline,
Cameron, Calcasieu, Lafayette, Beauregard, & Allen Parishes
Phone: (337) 898-4335
mshirley@agctr.lsu.edu

Research and Extension Programs
Agriculture
Economic/Community Development
Environment/Natural Resources
Families/Nutrition/Health
4-H Youth Programs

We would like to hear from you! Please contact us regarding fishery questions, comments or concerns you would like to see covered in the Lagniappe. Anyone interested in submitting information, such as articles, editorials or photographs pertaining to fishing or fisheries management is encouraged to do so.

Please contact Lagniappe editor Julie Anderson at janderson@agcenter.lsu.edu.

Julie A. Anderson
Assistant Professor
LSU Agcenter & Louisiana Sea Grant
114 RNR Building
Baton Rouge, LA 70803
Phone: 225-578-0771
Fax: 225-578-4227
janderson@agcenter.lsu.edu