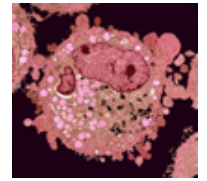




LSU Department of Biological Sciences Biochemistry and Molecular Biology (BMB) & Cellular, Developmental, and Integrative Biology (CDIB) Seminar Series



All seminars will be given virtually via Zoom on Mondays at 3:30 p.m.
Zoom details will be sent out with each weekly seminar announcement.

Fall 2020 Seminar Schedule

- Sept. 14:** *“Variations Among Strains of Burkholderia glumae in Genetic Traits and Pathogenic Behaviors in Rice”* **Jong Hyun Ham**, LSU Department of Plant Pathology and Crop Physiology. Host: Bill Doerrler.
- Sept. 21:** *“Beauty in the Eyes, Ears, and Nose of the Beholder: How Multimodal Sensory Processing Shapes Courtship Behavior”* **Kelly Ronald**, Hope College. Host: Karen Maruska.
- Sept. 28:** *“Identifying Determinants of Virulence and Virulence-Associated Phenotypes in Diverse Pathogenic Bacterial Species”* **Gregg Pettis**, LSU Department of Biological Sciences – promotion talk. Host: Evanna Gleason.
- Oct. 5:** *“Chromatin Remodeling Modulates Tolerance to Phosphate Starvation in Rice”* **Aaron Smith**, LSU Department of Biological Sciences – promotion talk. Host: Evanna Gleason.
- Oct. 12:** *“Natural Products as Regulators of Glucocorticoid Action”* **Fatima Rivas**, LSU Department of Chemistry. Host: Jackie Stephens.
- Oct. 19:** *“Potato Spindle Tuber Viroid, a Model for Studying RNA-templated Transcription by DNA-dependent RNA Polymerase II and Beyond”* **Ying Wang**, Mississippi State University. Host: Rui Lu.
- Oct. 26:** *“Tumor Initiation and Progression in a Drosophila Model”* **Wu-Min Deng**, Tulane University, Host: SeYeon Chung.
- Nov. 2:** *“Oxidative Modifications in Membrane Protein Complexes”* **Terry Bricker**, LSU Department of Biological Sciences.
- Nov. 9:** *“The Interface of Natural Population Dynamics, Endocrine-Disrupting Compounds and Enigmatic Disturbance: Understanding Human-Crocodile Conflict in Costa Rica”* **Chris Murray**, Southeastern Louisiana University. Host: Karen Maruska.
- Nov. 16:** *“Cellular Recycling: Role of Autophagy in Aging and Disease”* **Malene Hansen**, Sanford Burnham Prebys Medical Discovery Institute. Host: Tyler Butsch.
- Nov. 23:** *“ER-Mitochondrial Communication and its Roles in Aging”* **Kris Burkewitz**, Vanderbilt University. Host: Adam Bohnert.