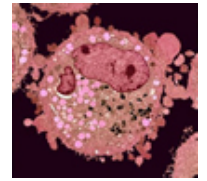




LSU Department of Biological Sciences Biochemistry and Molecular Biology (BMB) & Cellular, Developmental, and Integrative Biology (CDIB) Seminar Series



Unless noted otherwise, all seminars are on Mondays and start at 3:30 p.m. in the Life Sciences Annex A101. Coffee and Cookies are provided starting at 3:15 p.m. in the Annex Lobby.

Spring 2020 Seminar Schedule

Jan. 13: *“Mechano-microbiology: Bacterial Pathogens in Dynamic Environments”* Candidate for Microbiology Faculty Position.

Jan. 20: MLK Day – No Seminar

Jan. 27: *“Reward and Sex: Steps Toward a ‘Rewardome’”* Candidate for Neuroscience Faculty Position.

Feb. 3: *“Memory Encoding and Consolidation: Mechanism and Regulation”* Candidate for Neuroscience Faculty Position.

Feb. 10: *“Dynamics of Neuronal Autophagy During Aging and Neurodegeneration”* Candidate for Neuroscience Faculty Position.

Feb. 17: OPEN

Feb. 24: Mardi Gras Holiday – No Seminar

Mar. 2: *“Incubation Behavior Links Environmental Conditions with the Avian Developmental Environment: Implications for...Everything!”* Sarah DuRant, University of Arkansas. Host: Christine Lattin.

Mar. 9: *“The Evolution of Extreme Ionizing Radiation Resistance”* John Battista, LSU Department of Biological Sciences.

Mar. 16: *“Oxytocin in Experience-Dependent Development”* Elizabeth Hammock, Florida State University. Host: Ryo Teruyama.

Mar. 23: Spring Break – No Seminar

Mar. 30: *“Oxidative Modifications in Membrane Protein Complexes”* Terry Bricker, LSU Department of Biological Sciences.

Apr. 6: *“Mechanisms of Adaptation to Cellular Stress and Impact in Disease Development”* Maria Hatzoglou, Case Western Reserve University School of Medicine. Host: Anastasios Vourekas.

Apr. 13: *“Variations Among Strains of Burkholderia glumae in Genetic Traits and Pathogenic Behaviors in Rice”* Jong Hyun Ham, LSU Department of Plant Pathology and Crop Physiology. Host: Bill Doerrler.

Apr. 20: *“The Interface of Natural Population Dynamics, Endocrine-Disrupting Compounds and Enigmatic Disturbance: Understanding Human- Crocodile Conflict in Costa Rica”* Christopher Murray, Southeastern Louisiana University. Host: Karen Maruska.

Apr. 27: *“Plant Environmental Acclimation via Modulation of Stomatal Development”* Mike Mickelbart, Purdue University. Host: Aaron Smith.