

Description of Map Units
 QUATERNARY SYSTEM

HOLOCENE

Ha **Alluvium**—Undifferentiated deposits of small upland streams; unconsolidated alluvial deposits of minor streams and creeks filling valleys incised into older deposits, with textures varying from gravelly sand to sandy mud.

PLEISTOCENE

LOESS—Eolian silt veneer of late Wisconsin age (**Peoria Loess**) mantling Pleistocene and older strata. Underlain in places by older loess of possible late Sangamon to early Wisconsin age (**Sticky Island Loess**). Loess is shown where the total thickness of either or both loess units is 1 meter or greater.

PRAIRIE ALLOGROUP

Pph **Hammond alloformation**—Deposits of middle to late Wisconsin coastal-plain streams in the Florida Parishes of southeastern Louisiana. It consists of grayish silty clay to very fine to medium sand, with abundant ferromagnesian nodules (≤ 2 cm) in places, and in the northern Pride to western Watson 7.5-minute quadrangles is covered by 1 m or more of Peoria Loess.

Open Water, Inundated Area, Swamp

Contact—Includes inferred contacts.

Approximately located fault—Identity and existence certain, location approximate. Ball and bar on downthrown block.

Concealed fault—Identity and existence certain, location concealed. Ball and bar on downthrown block.

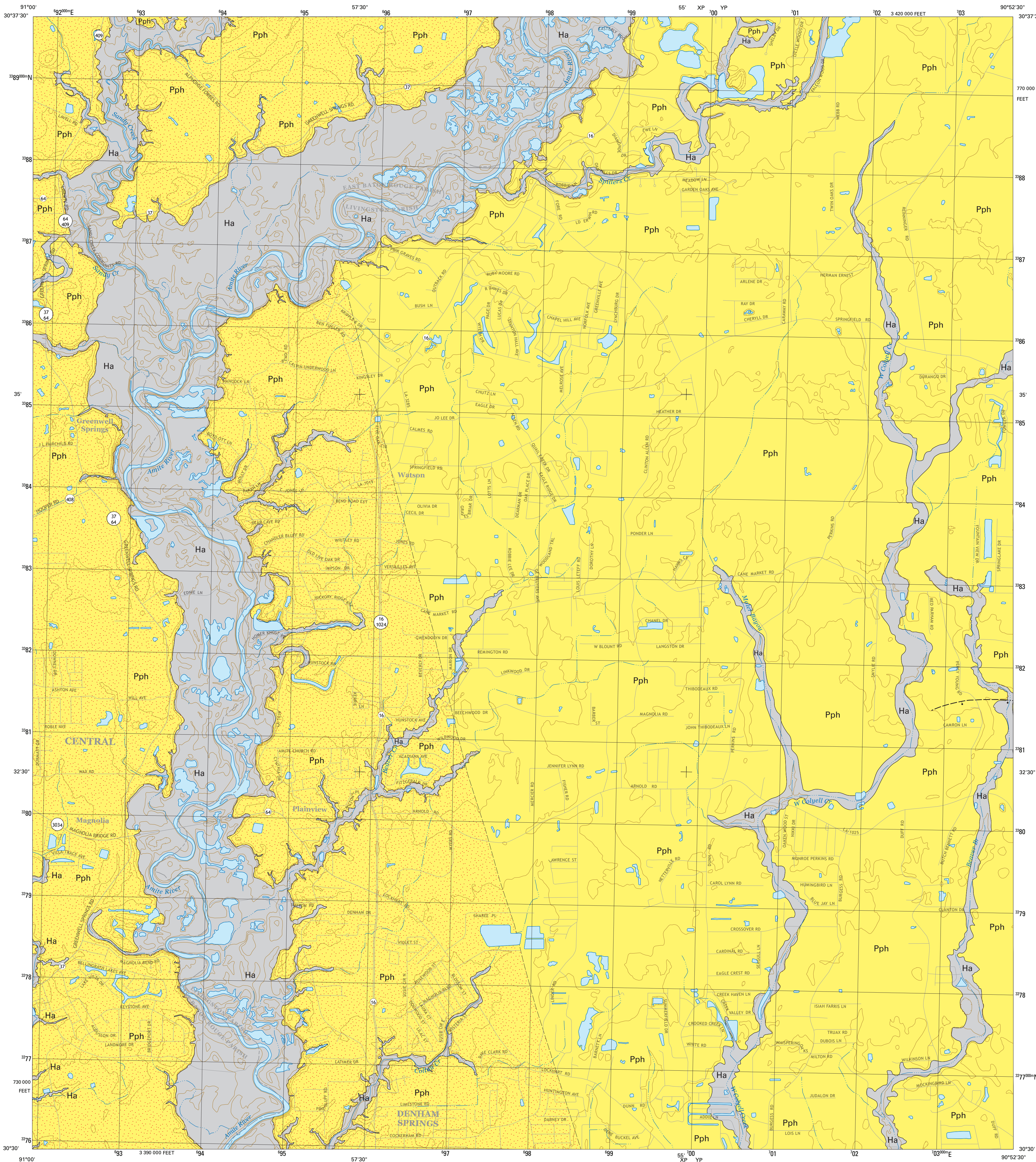
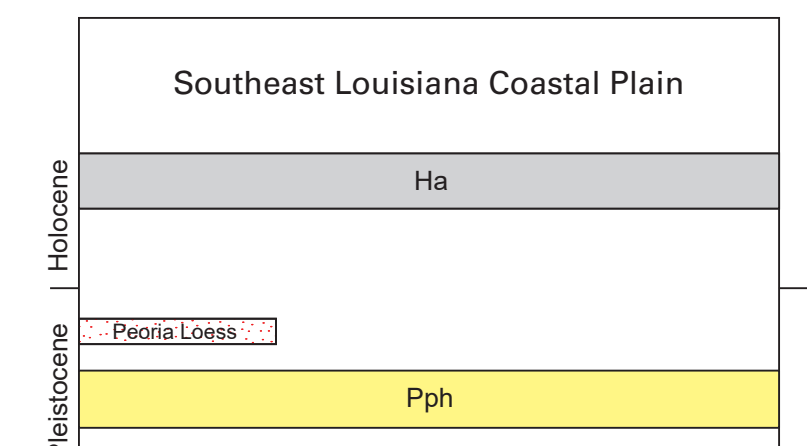
Streams

Topographic Contours

References:

Loess distribution based on:
 Miller, B. J. (compiler), [1983], [Distribution and thickness of loess in Baton Rouge, Louisiana 1 × 2 degree quadrangle]; Louisiana State University Department of Agronomy, Louisiana Agricultural Center, Louisiana Agricultural Experiment Station, Baton Rouge, unpublished map, Louisiana Geological Survey, scale 1:250,000.

Correlation of Map Units

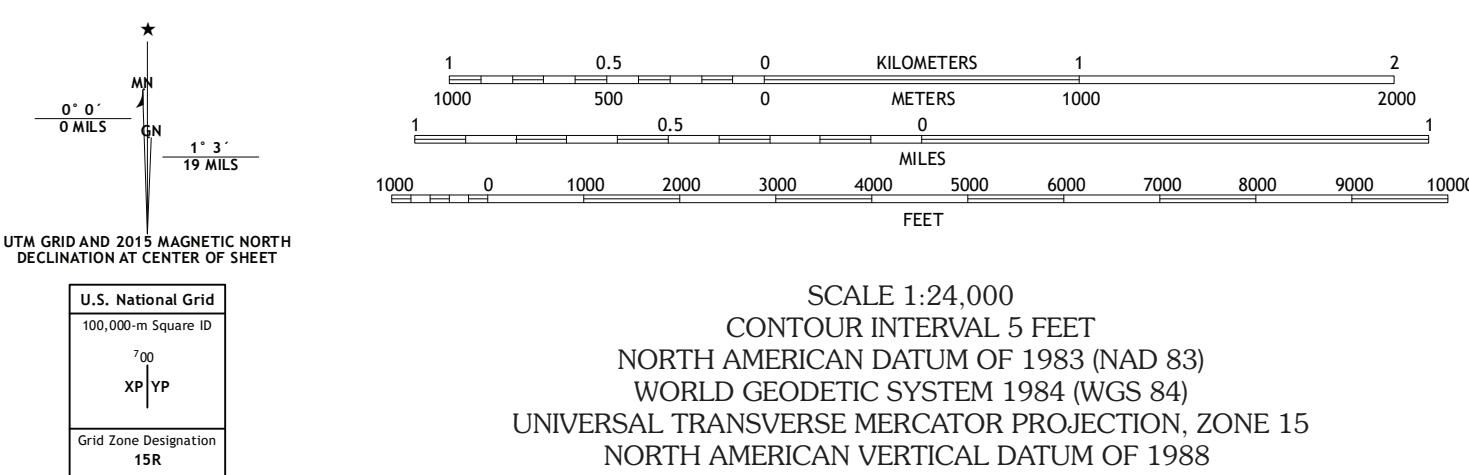


Produced and published by the Louisiana Geological Survey
 3079 Energy, Coast & Environment Building, Louisiana State University
 Baton Rouge, LA 70803 • 225/578-5320 • www.lgs.lsu.edu

This geologic map was funded in part by the USGS National Cooperative
 Geologic Mapping Program under StateMap award number G15AC00247, 2015.

Copyright ©2016 by the Louisiana Geological Survey

Geology: Richard P. McCulloh and Paul V. Heinrich
 GIS Compilation: R. Hampton Peele, Richard P. McCulloh, and Paul V. Heinrich
 Cartography: Robert L. Paulsell



1	2	3
4	5	6
7	8	9

1 Fred
 2 Pride
 3 Pine Grove
 4 Comite
 5 Satsuma
 6 Baton Rouge East
 7 Denham Springs
 8 Walker

ROAD CLASSIFICATION	
Egessway	Local Connector
Secondary Hwy	Local Road
Ramp	AWD
Interstate Route	US Route
	State Route



Base Map	United States Geological Survey, 2020
Boundaries	LaDOTD, 2007
Contours	National Elevation Dataset, 2008 - 2011
Hydrography	National Hydrography Dataset, 2002 - 2017
Names	GNIS, 1980 - 2017
Roads	U.S. Census Bureau, 2017
Wetlands	FWS National Wetlands Inventory 2021

**Geologic Map of the Watson 7.5' quadrangle,
 Livingston and East Baton Rouge Parishes, Louisiana**

This research is supported by the U. S. Geological Survey, National Cooperative Geologic Mapping Program. The views and conclusions contained in this document are those of the authors and should not be interpreted as necessarily representing the official policies, either expressed or implied, of the U. S. Government or the state of Louisiana. This map was produced to conform with the National Geospatial Program US Topo Product Standard, 2011.

This map has been carefully prepared from the best existing sources available at the time of preparation. However, the Louisiana Geological Survey and Louisiana State University do not assume responsibility or liability for any reliance thereon. This information is provided with the understanding that it is not guaranteed to be correct or complete, and conclusions drawn from such data are the sole responsibility of the user. These geologic quadrangles are intended for use at the scale of 1:24,000. A detailed on-the-ground survey and analysis of a specific site may differ from these maps.