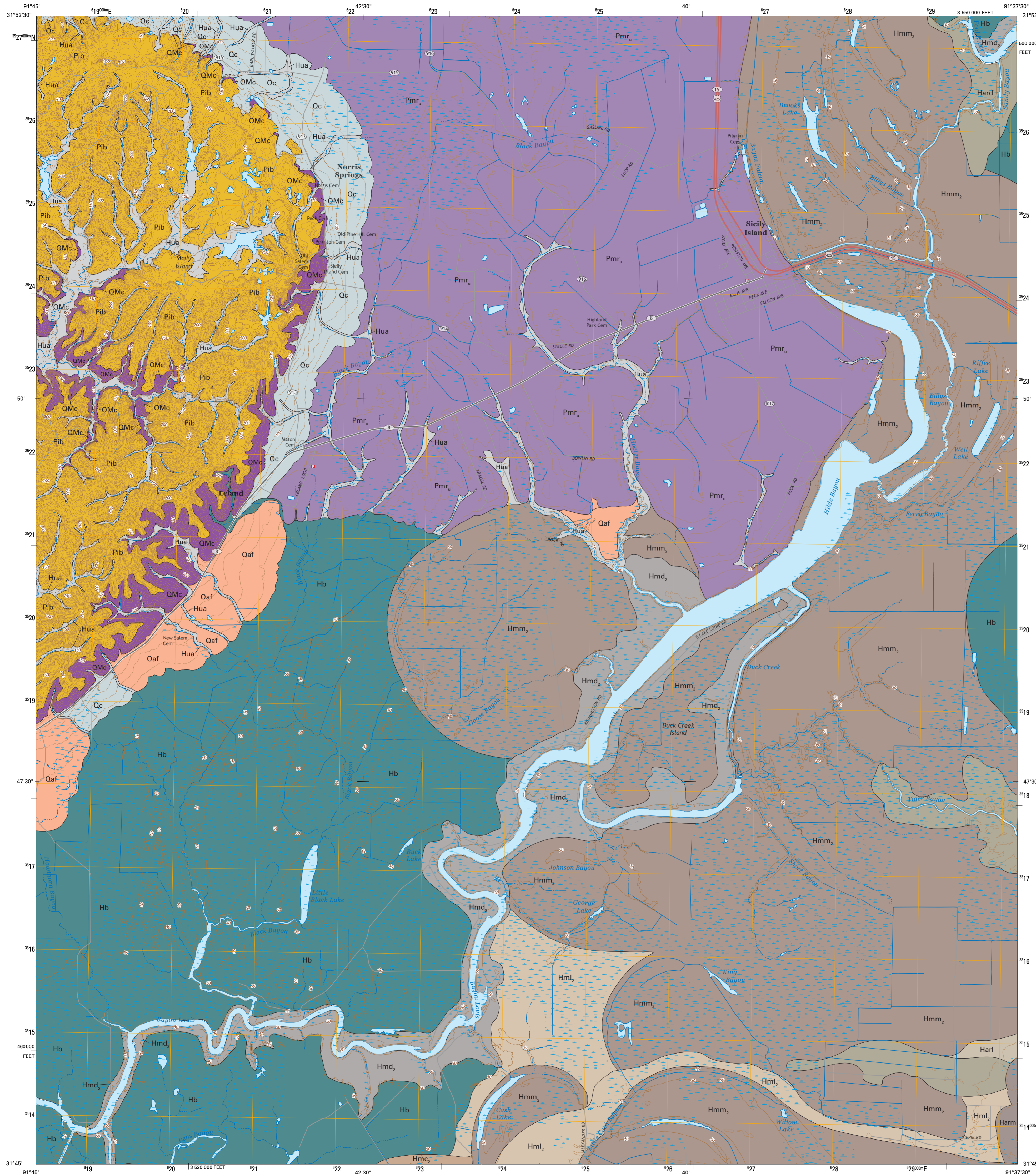


Description of Map Units



- QUATERNARY SYSTEM**
- HOLOCENE**
- Hua** **Holocene undifferentiated alluvium**—Undifferentiated deposits of small upland streams; unconsolidated alluvial deposits of minor streams and creeks filling valleys incised into older deposits, with textures varying from gravelly sand to sandy mud.
  - Hb** **Small river meander-belt deposits**—point bar deposits underlying the meander belts of small rivers.
  - Harm** **Small river natural levee deposits**—deposits forming low natural levees flanking the meander belts of small rivers.
  - Harl** **Backswamp deposits**—fine-grained Holocene deposits of rivers, underlying the flood basins between meander belts.
  - Harl** **Arkansas River meander-belt deposits**—point bar deposits underlying meander belts of the Arkansas River.
  - Harl** **Arkansas River natural levee deposits**—deposits forming low natural levees flanking the meander belts of the Arkansas River.
  - Hmm<sub>2</sub>** **Arkansas River distributary deposits**—sandy and silty sediments occupying abandoned courses of a relict distributary system of the Arkansas River.
  - Hmm<sub>2</sub>** **Mississippi River meander belt 2**—point bar deposits of Mississippi River meander-belt 2, buried by a thin layer of overbank sediments.
  - Hml<sub>2</sub>** **Natural levee complex of Mississippi River meander belt 2**—deposits of the natural levees flanking Mississippi River meander belt 2.
  - Hmc<sub>2</sub>** **Crevasse complex of Mississippi River meander belt 2**—crevasse channel and splay deposits of Mississippi River meander belt 2.
  - Hmd<sub>2</sub>** **Distributary complex of Mississippi River meander belt 2**—natural levee deposits of the distributary course of Mississippi River meander belt 2.
- QUATERNARY UNDIFFERENTIATED**
- Qc** **Quaternary colluvium**—undifferentiated colluvial deposits forming lobate to apronlike landforms.
  - Qaf** **Quaternary alluvial-fan deposits**—unamed alluvial-fan deposits.
- PLEISTOCENE**
- Braide Belts/Valley Trains**
- Pmr<sub>u</sub>** **Upper Macon Ridge alloformation**—Sandy fluvial deposits formed by the Mississippi River during a braided depositional regime associated with the transport of glacial outwash. Sand and gravel channel and bar deposits that underlie a well-preserved braided belt that is sometimes capped by Peoria Loess, loess-derived colluvium and/or silty alluvium, and/or fine-grained flood basin sediments. The Upper Macon Ridge alloformation is differentiated from the adjoining Lower Macon Ridge alloformation by a generally lower elevation and distinct crosscutting relationships. It is the stratigraphically higher subunit (geomorphically lower subunit of Rittenour et al., 2007). Dating by the optically stimulated luminescence method (Rittenour et al., 2005, 2007) indicates that the two principal braided belts in Louisiana are both of middle Wisconsin age with the Upper Macon Ridge Alloformation slightly the younger.
- INTERMEDIATE ALLOGROUP**
- Pib** **Bentley alloformation**—dissected alluvial deposits of early Pleistocene streams of primarily the Red River in central Louisiana. The unit is blanketed by yellow loam and incises Tertiary formations; it is incised by younger subunits of the Intermediate allogroup, and by the Prairie Allogroup and younger strata. Equivalent to the Natchez Formation of Mississippi.
- TERTIARY SYSTEM**
- MIOCENE-OLIGOCENE**
- OMc** **Catahoula Formation**—texturally heterogeneous suite of generally poorly sorted sediments comprising primarily silt/siltstone to very fine quartzose sand/sandstone, with and without admixtures of clay. Overall or predominant grain size of sand/sandstone tends to average very fine to fine sand. Coarser grains may comprise quartz, chert, and/or mud clasts. Contains petrified wood and tuffaceous sandstone locally. Weathers locally to produce a thick (up to 2 meters) gray/tan loamy surface unit. Characteristics of the surface Catahoula accord generally with continental, fluvial-dominated deposition (Flak, 1940; Hinds, 1999), with the large proportion of silt observed in places suggestive of the onset of transition to deltaic facies (McCulloch and Heinrich, 2002). Recent work indicates a paleontological age of early late Miocene for the Catahoula in its type area in eastern north Louisiana (Wrenn et al., 2003), in contrast to the Oligocene age suggested by subsurface-to-surface correlation in the Texas Gulf Coast (Galloway, 1977; Galloway et al., 1982).
- Open Water, Inundated Area, Wetland**
- Contact**—includes inferred contacts.
- Streams**
- Topographic Contours**

Produced and published by the Louisiana Geological Survey  
 3079 Energy, Coast & Environment Building, Louisiana State University  
 Baton Rouge, LA 70803 • 225/578-5320 • www.lsu.edu/lgs/

Production of this map was supported by the U.S. Geological Survey,  
 Department of the Interior, under Assistance Award No. 01HQAG0056.

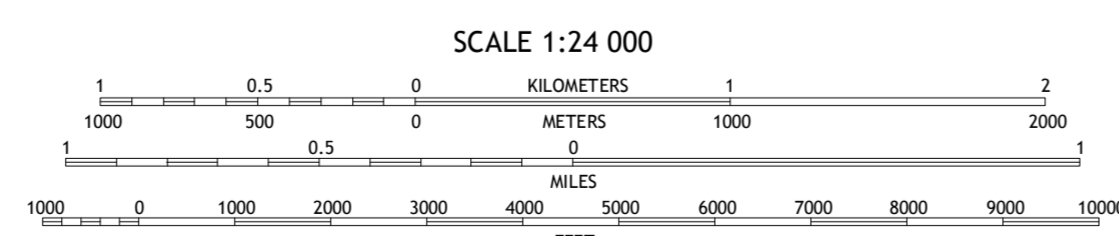
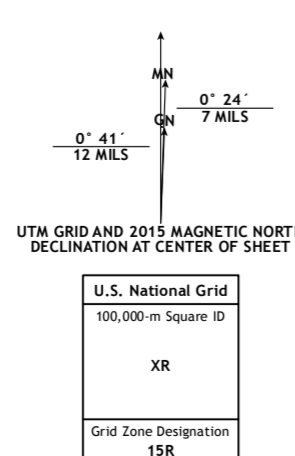
Copyright ©2002, 2021 by the Louisiana Geological Survey

Geology By: Richard P. McCulloch and Paul Heinrich

GIS compilation by: R. Hampton Peele and Anuradha Erangani

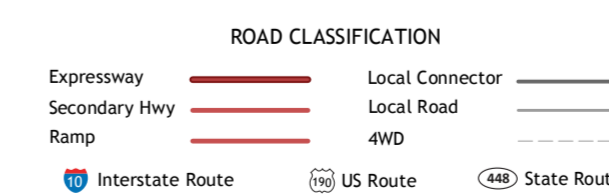
Revision GIS by: Robert L. Paulsell

Cartography by: Robert L. Paulsell



1	2	3	1 Extension
2	3	4	2 Wauer
3	4	5	3 Oakley
4	5	6	4 Harrisonburg
5	6	7	5 Foulie
6	7	8	6 Jonesville North
7	8		7 Dunbarton
8			8 Ferrybay North

ADJOINING QUADRANGLES



SICILY ISLAND, LA  
 2015

The views and conclusions contained in this document are those of the authors and should not be interpreted as necessarily representing the official policies, either expressed or implied, of the U.S. Government or the state of Louisiana.

This map has been carefully prepared from the best existing sources available at the time of preparation. However, the Louisiana Geological Survey and Louisiana State University do not assume responsibility or liability for any reliance thereon. This information is provided with the understanding that it is not guaranteed to be correct or complete, and conclusions drawn from such data are the sole responsibility of the user. These regional geologic quadrangles are intended for use at the scale of 1:24,000. A detailed on-the-ground survey and analysis of a specific site may differ from these maps.

**Sicily Island Surface Geology**  
 Revised 2021