

Description of Map Units

QUATERNARY SYSTEM

HOLOCENE

**Ha Alluvium**—undifferentiated deposits of small upland streams; includes terraced fluvial (meander belt, backswamp, and braided stream), colluvial, estuarine, deltaic, and marine units deposited during the Wisconsin to Sangamon interval of the late Pleistocene. Multiple levels along alluvial valleys and coast-parallel trends are grouped into two principal temporal phases. The Prairie Allotgroup is undifferentiated where fluvial terrace remnants flank headward portions of stream courses.

PLEISTOCENE

PRAIRIE ALLOTGROUP

**Pp Prairie Allotgroup, undifferentiated**—diverse depositional sequence of deposits of the Mississippi River, its tributaries, and coastal plain streams; includes terraced fluvial (meander belt, backswamp, and braided stream), colluvial, estuarine, deltaic, and marine units deposited during the Wisconsin to Sangamon interval of the late Pleistocene. Multiple levels along alluvial valleys and coast-parallel trends are grouped into two principal temporal phases. The Prairie Allotgroup is undifferentiated where fluvial terrace remnants flank headward portions of stream courses.

**Ppl Upper Prairie Allotgroup**—Younger of Prairie Allotgroup temporal phases, consisting of alluvial deposits of ancestral late Pleistocene streams. Grayish-white to reddish-white and light red very fine to medium sand to silt, with clay, to sandy mud, in places including beds of gravelly sand and sandy gravel of chert and vein quartz. Weathers to yellow, orange, and/or brownish-tan hues.

TERTIARY SYSTEM

PLIOCENE

UPLAND ALLOTGROUP

**Puw Willis Formation, undifferentiated**—deeply dissected alluvial sediments deposited by Pliocene streams in west-central Louisiana. The unit is unconformably underlain by Tertiary formations of Miocene to Eocene age, and is bounded downip by the Lisse surface.

MIOCENE

FLEMING GROUP

**Mfb Blounts Creek Formation, Fleming Group**—a relatively nondescript series of grayish clayey and silty very fine to fine sands, silty and very fine to fine sandy clays, and clayey silts. The principal sedimentary structures comprise rare lamination and low-angle cross lamination. Characteristics of the surface Blounts Creek accord generally with fluvial deposition interpreted as characteristic of an upper deltaic plain setting.

**Mfcc Castor Creek Formation, Fleming Group**—silty to very fine sandy, grayish clay, with reddish mottles in places. Comprises calcareous clay, with scattered irregular calcareous nodules up to several centimeters long, at numerous localities. May weather to black soil. Local vertebrate fossil finds at Fort Polk in west-central Louisiana all occur in a coarse-sand- and conglomerate-rich sequence that represents a concentration and reworking of these calcareous nodules. Subsurface-to-surface electric-log correlation indicates that this sequence lies very near, if not coincident with, the uppermost portion of the Castor Creek. Fisk interpreted the Castor Creek as reflecting more brackish-water-influenced deposition than for the superjacent Blounts Creek and the subjacent Williamson Creek, based on overall texture and internal features and the occurrence of the Potamidites masoni fauna. The coarser-grained vertebrate-fossil-bearing sequence as indicating fluvial deposition with episodes of repetitive paleosol formation on a flood plain surface.

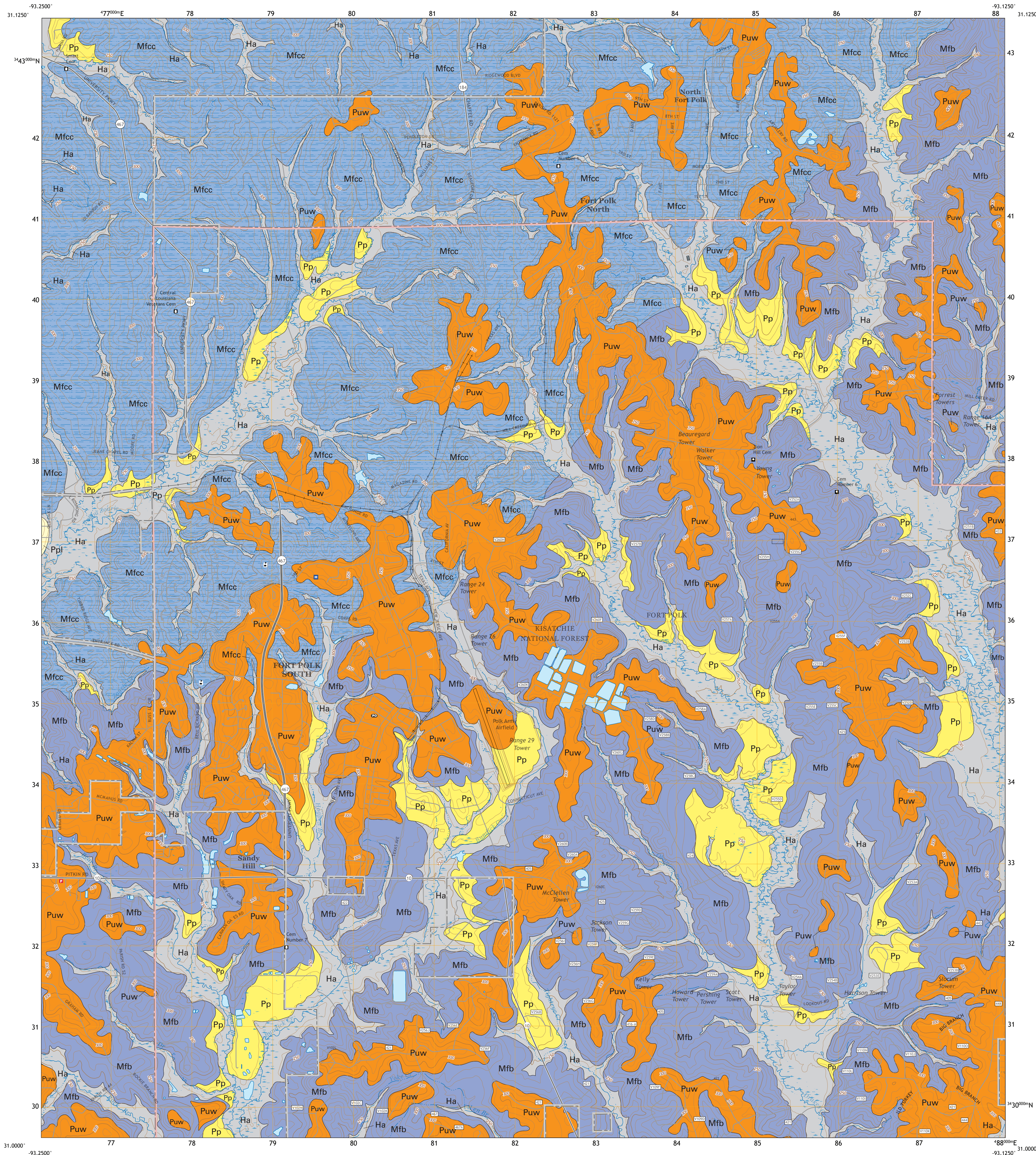
**Open Water, Inundated Area, Wetland**

**Streams**

**Contact**—includes inferred contacts.

**Topographic Contours**

**Department of Defence Boundary**



Produced and published by the Louisiana Geological Survey  
3079 Energy, Coast & Environment Building, Louisiana State University  
Baton Rouge, LA 70803 • 225/578-5320 • www.lsu.edu/lgs/

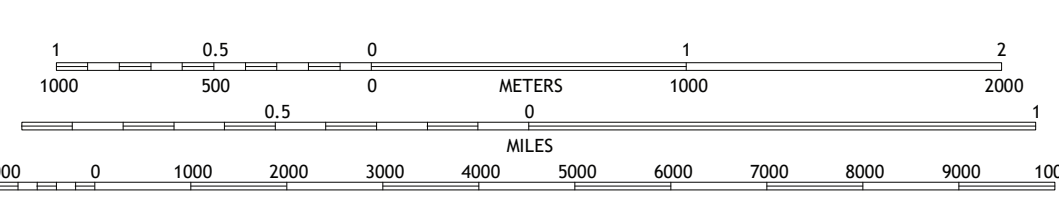
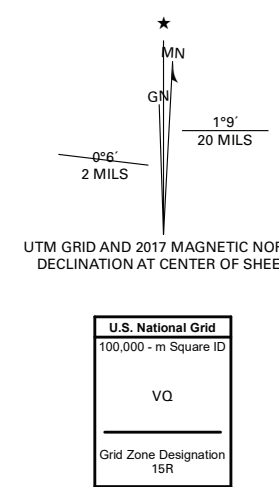
This geologic map was funded by the U.S. Army Corps of Engineers  
contract number DACA63-95-D-0051.

Copyright ©1998 by the Louisiana Geological Survey

Geology: McCulloh, R.P. and Heinrich, P.V.

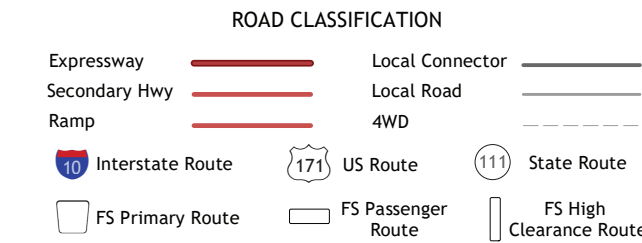
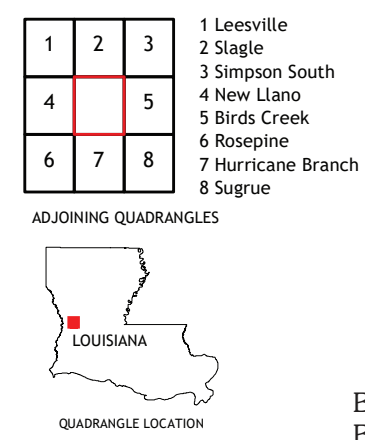
GIS Compilation: Peele R.H., Griffin D.W., Ganaguruparan, M., Shaik, M., Temento, L., Olinde, B., Binselam, S.A., Franco, J.G., Rahman, A., Cravens, T., Beall, A., Pan, X. and Rainey, S.J.

Cartography: Paulsell, R.L.



SCALE 1:24,000

Base map from U.S. Geological Survey 1:24,000 GeoPDF  
National Geospatial Program US Topo Product Standard, 2011.  
Universal Transverse Mercator Projection, Zone 15  
North American Datum, 1983 (NAD 83)  
Contour Interval 10 Feet  
North American Vertical Datum 1988



1	2	3	1 Leesville
4	5	6	2 Slagle
7	8	9	3 Simpson South
			4 New Liano
			5 Birds Creek
			6 Rosepine
			7 Hurricane Branch
			8 Surge

This research is supported by the U.S. Army Corps of Engineers contract number DACA63-95-D-0051. The views and conclusions contained in this document are those of the authors and should not be interpreted as necessarily representing the official policies, either expressed or implied, of the U.S. Government or the state of Louisiana. This map was produced to conform with the National Geospatial Program US Topo Product Standard, 2011.

This map has been carefully prepared from the best existing sources available at the time of preparation. However, the Louisiana Geological Survey and Louisiana State University do not assume responsibility or liability for any reliance thereon. This information is provided with the understanding that it is not guaranteed to be correct or complete, and conclusions drawn from such data are the sole responsibility of the user. These geologic quadrangles are intended for use at the scale of 1:24,000. A detailed on-the-ground survey and analysis of a specific site may differ from these maps.

Geologic Map of the Fort Polk 7.5 minute quadrangle  
Vernon Parish, Louisiana