

**Description of Map Units**

QUATERNARY SYSTEM

HOLOCENE

- Ha** **Alluvium**—Undifferentiated deposits of small upland streams; unconsolidated alluvial deposits of minor streams and creeks filling valleys incised into older deposits, with textures varying from gravely sand to sandy mud.
- Hb** **Backswamp**—fine-grained Holocene deposits of rivers, underlying the flood basins between meander belts.
- Hsm** **Small river meander-belt deposits**—point bar deposits underlying the meander belts of small rivers.

QUATERNARY UNDIFFERENTIATED

- Qaf** **Quaternary alluvial-fan deposits**—unnamed alluvial-fan deposits.

PLEISTOCENE

DEWETVILLE ALLOGROUP

- Pdmh** **Mitchell Hammock Alloformation**—alloformation intermediate in age and topographic position between the Gum Bayou and Foster Creek alloformations of the Dewetville Allogroup along the Bogue Chitto and Pearl rivers. It is named for Mitchell Hammock in the Bogalusa quadrangle.

PRAIRIE ALLOGROUP

- Pph** **Hammond alloformation**—Deposits of middle to late Wisconsin coastal-plain streams in the Florida Parishes of southeastern Louisiana. In the area encompassing Waldheim quadrangle it consists of very fine to medium sand, in places clayey or with silty clay interbeds, and is grayish with yellowish, brownish, and/or reddish mottles.
- Ppbu** **Bush alloformation**—fluvial deposits of the late Pleistocene Bogue Chitto River. These fluvial sediments form a well defined alluvial apron that has been built over the surface of the Hammond alloformation at the mouth of the Bogue Chitto valley.

INTERMEDIATE ALLOGROUP

- Pi** **Intermediate Allogroup, undifferentiated**—fluvial deposits of the Mississippi River, its tributaries, and coastal plain streams; includes terraces locally designated as Montgomery, Lissie, Elizabeth, Oakdale, and most of the Bentley. Included are broad areas of colluvial and slope deposits of the middle Pleistocene, locally derived from the Upland allogroup and/or Tertiary formations. Where mapped near the Mississippi River flood plain, the unit is blanketed by Peoria and/or Sicily Island Loess.

TERTIARY SYSTEM

PLIOCENE

UPLAND ALLOGROUP

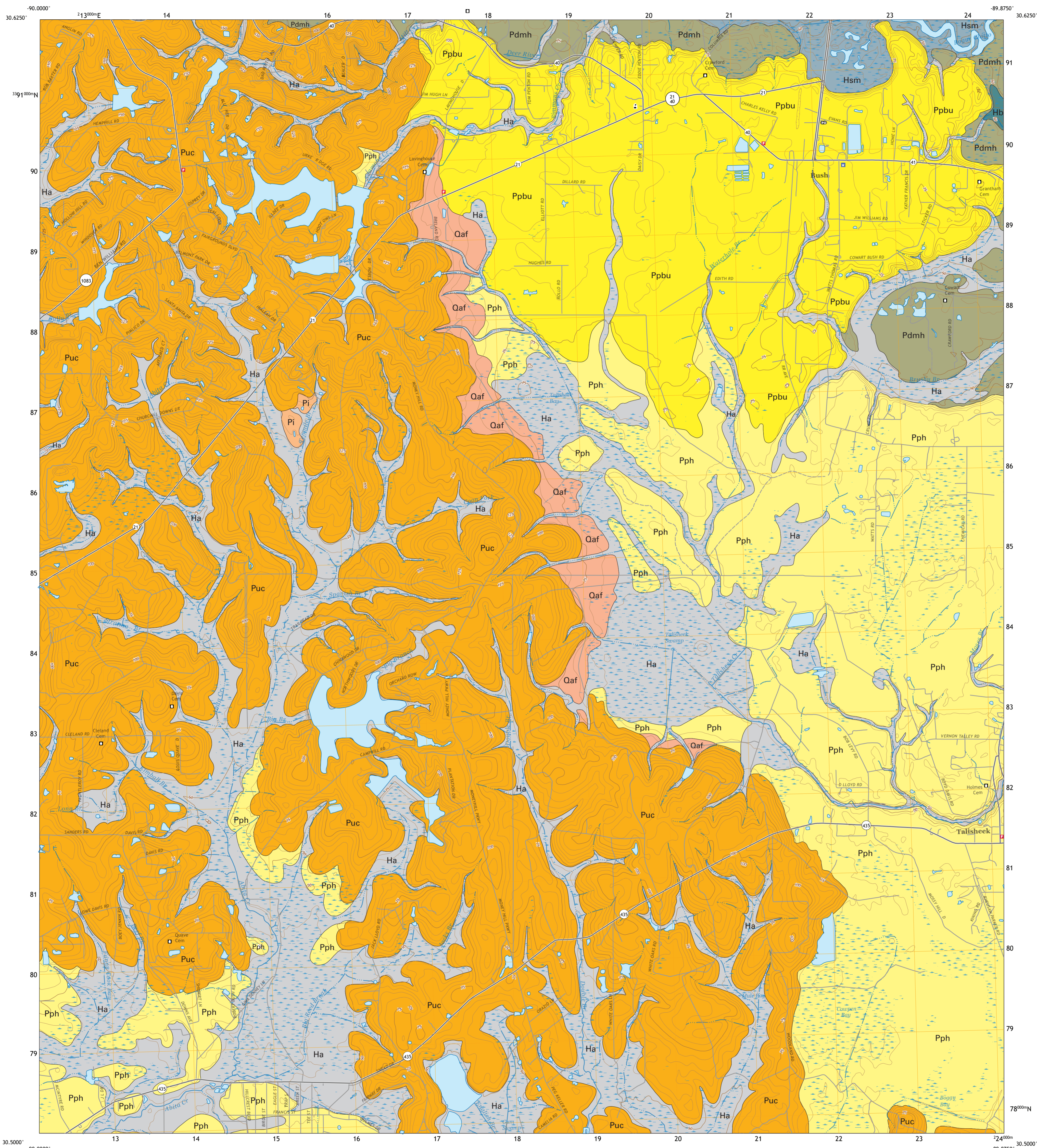
- Puc** **Citronelle Formation**—Deeply dissected alluvial deposits of Pliocene streams originating from nonglacial sources in the Florida Parishes of southeastern Louisiana. Correlates with the Willis Formation in southwestern Louisiana. In the area encompassing the Waldheim quadrangle, the Citronelle Formation consists of clayey very fine to coarse sand, with gravely sand to sandy gravel (comprising chert, quartz, and/or light-colored mud), reddish to reddish brown with grayish to yellowish to brownish mottles, with occasional thin beds of pale red mud and purple clay, and is blanketed by less than 1 m of Sicily Island Loess. In places it includes abundant tree root casts and ironstone. Less-weathered exposures of Citronelle may show large-scale cross beds with light-grayish, whitish-weathering grains and sparse mica concentrated on cross beds; horizontal bedding; and mud rip-up clasts.

**Open Water, Inundated Area, Swamp**

**Streams**

**Contact**—includes inferred contacts.

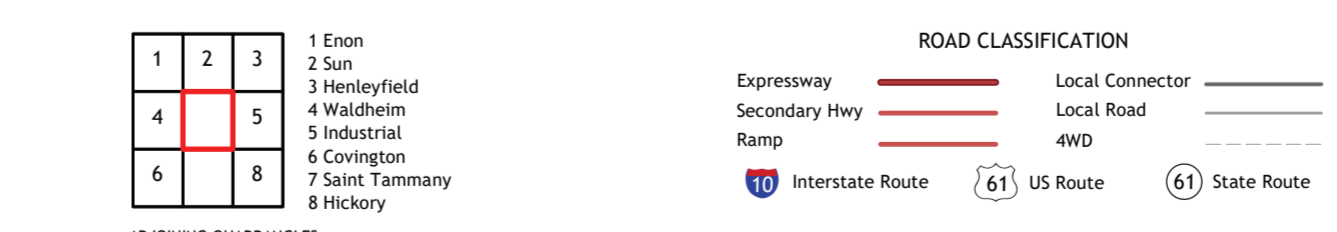
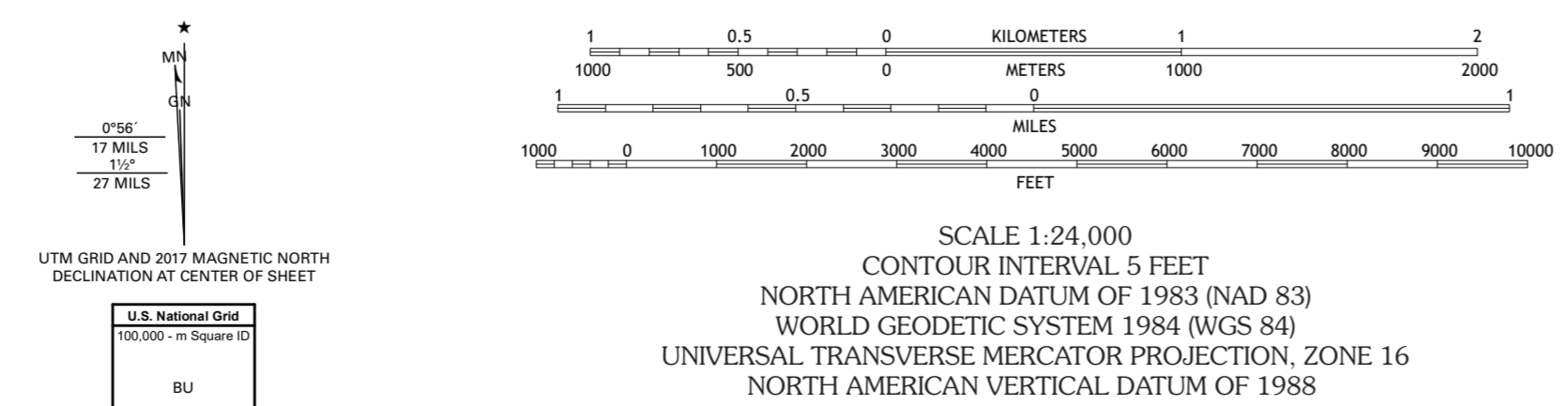
**Topographic Contours**



Produced and published by the Louisiana Geological Survey  
3079 Energy, Coast & Environment Building, Louisiana State University  
Baton Rouge, LA 70803 • 225/578-5320 • www.lsu.edu/lgs/

This geologic map was funded in part by the USGS National Cooperative Geologic Mapping Program under STATEMAP award number 02HQAG00035, 2002.

Copyright ©2003 and ©2023 by the Louisiana Geological Survey  
Geology: Richard P. McCulloh and Paul V. Heinrich  
GIS Compilation: R. Hampton Peele, Anuradha Eragani, P. Lakshmi Deepthi, Prammagnaam Vijiainemath, and Kalyani Tavisaia  
Cartography: Robert L. Paulsell



ADJOINING QUADRANGLES

1	2	3
4	5	6
7	8	

QUADRANGLE LOCATION

Base Map.....United States Geological Survey, 2020  
Boundaries.....LaDOTD, 2007  
Contours.....National Elevation Dataset, 2008 - 2011  
Hydrography.....National Hydrography Dataset, 2002 - 2017  
Names.....GNIS, 1980 - 2017  
Roads.....U.S. Census Bureau, 2017  
Wetlands.....FWS National Wetlands Inventory 2021

This research is supported by the U. S. Geological Survey, National Cooperative Geologic Mapping Program. The views and conclusions contained in this document are those of the authors and should not be interpreted as necessarily representing the official policies, either expressed or implied, of the U. S. Government or the state of Louisiana. This map was produced to conform with the National Geospatial Program US Topo Product Standard, 2011.

This map has been carefully prepared from the best existing sources available at the time of preparation. However, the Louisiana Geological Survey and Louisiana State University do not assume responsibility or liability for any reliance thereon. This information is provided with the understanding that it is not guaranteed to be correct or complete, and conclusions drawn from such data are the sole responsibility of the user. These geologic quadrangles are intended for use at the scale of 1:24,000. A detailed on-the-ground survey and analysis of a specific site may differ from these maps.

**Geologic Map of the Bush 7.5 Minute Quadrangle,  
St. Tammany Parish, Louisiana**