

“TRUST AND CONFIDENCE”

“Research on trust ranges across disciplines, each bringing their own definitions of trust and their own standards of evidence to the table. Some theorists claim that trust is a social virtue that cannot be reduced to strategic self-interest, others argue that trusting another person is ultimately a rational calculation based on information about that person and the incentives they face,” (Russell Sage Foundation News, Issue No. 6, 2000)

What then are good measures of trust and what kinds of evidence do we need to support our findings? Is trustworthiness embedded in indicators such as religion, race, neighborhoods or the workplace? Do we tend to trust people who mirror our own interests or those we believe have the same codes of behavior? Do we tend to trust those whom we believe can provide us with rewards, advantages and payoffs. There are many cues present in trusting relationships that help us identify and measure our beliefs in degrees of trust. One such cue is religion. This paper will discuss the degree of religiosity people have which causes them to engage in trusting relationships. When people have deep roots in the church, they tend to carry the related values into their lives outside the church. For example, we might see that people who attend church on a regular basis will tend to foster trusting relationships in many aspects of their lives not directly related to the church or church activities.

As mentioned above, this paper will examine the level of trust present in certain relationships. It will also take into account the degree to which religion may affect the relationship. More specifically, we will examine the following hypotheses:

- 1) If people attend religious services every week or more often, then they will

have a great deal of confidence in the church because of the values and belief system associated with the church.

2) If people have a great deal of confidence in the church, then they will feel most people can be trusted because of their strong religious background.

3) If people feel most people can be trusted, then they will trust the people in their neighborhoods a lot because of the close relationships they share.

4) If people trust the people in their neighborhoods a lot, then they will trust the people they work with a lot because of the trusting values they possess as a part of their belief system.

5) If people trust the people they work with a lot, then they will trust the people who work in places where they shop a lot, again because of the value system embedded by their religious beliefs.

In an effort to gather data to validate the stated hypotheses, a survey was taken of a sample of the East Baton Rouge Parish (EBRP) population. A list of telephone numbers were provided by Genesys Sampling System. Through random digit dialing (RDD), Genesys supplied a list of telephone numbers generated from specified information regarding selected exchanges, geographic and demographic descriptives. Once the list was generated, a variety of processes had to be completed such as sorting, running the frequencies, nonproductive number purging and other reporting features. During this period of formulating the phone list, preparation was also underway in finalizing the survey instrument. There were a total of 44 questions that covered subject matters such as trust/confidence, tolerance, race, gender, crime/punishment, family, safety and other areas. The survey was conducted over a four week period from 358

respondents across the EBRP area. The data was collected, compiled, entered in a database and analyzed.

The results of a crosstab conducted on hypothesis number one revealed that 65% of the respondents who attend church every week or more often did indeed have a great deal of confidence in the church. This represents a strong relationship that is statistically significant. The results of a crosstab conducted on hypothesis number two revealed some interesting results that showed a somewhat weak relationship between the two variables. For example, only 40.9% of the respondents who had a great deal of confidence in the church felt more people can be trust. Whereas, on the other side of spectrum, 60% of people who volunteered the answer having no confidence in the church felt most people can be trusted. In other words, people who had confidence in the church were less trusting of other people. People who had no confidence in the church were more trusting of other people. Even more interesting is data that shows 60.9% of respondents who reported having very little confidence in the church felt you can't be too careful in dealing with people. **This means** that the relationship as described in hypothesis number two is not statistically significant. The results of a crosstab conducted on hypothesis number three revealed two strong relationships between the two variables. The first relationship showed that 54.2% of the respondents who said it depends regarding trust in dealing with people felt they could trust the people in their neighborhoods some. The second relationship showed that 53.6% of the respondents who said most people can be trusted felt they could trust people in their neighborhoods a lot. These are strong relationships and ones that are statistically significant. The results of a crosstab conducted on hypothesis number four revealed 62.6% of respondents who said they trust

Need specifics

Base N too small

Not necessarily

Base N too small

the people in their neighborhoods at lot felt they could trust the people they work with a lot. This is a strong relationship and one that is statistically significant. However, this crosstab also showed that 58.3% of the respondents did not trust the people in their neighborhoods but they trust the people they worked with some. This can probably be contributed to the fact that the environment people live in may not foster trusting relationships in the same manner as their working environments. The crosstab conducted on hypothesis number five revealed only 20.8% of respondents who trusted the people they work with a lot also trusted the people who work in places where they shop a lot. The highest correlation in the this crosstab showed 61.5% of the respondents who trusted the people they work with some also trusted the people in places where they shop some. Even though the original relationship is weak, it is still statistically significant.

When frequencies in percentages are observed in isolation and in comparison with other data, we will find that the above results are validated. For example, data from the 2001 EBRP survey showed 39.4% of the respondents attend church every week or more often, 46.1% have a great deal of confidence in the church, 52.2% said you can't be too careful in dealing with people, 39.9% said they trust people in their neighborhoods some, and 51.7% said they trust people who work in the stores where they shop some. The level of these frequencies match the level of crosstab relationships found in the above data analyses. When compared to percentages from other surveys, we will find results that are somewhat off from the results of this survey. For example, in the 2000 EBRP survey, 49% of respondents attended church every week or more often. In the 2000 South data, 45% of respondents attended church every week or more often. These percentages are much higher than those found in the 2001 EBRP survey. Another

example found that 34% of the respondents from the 2000 EBRP survey said most people can be trusted while 33% in the General Social Survey of 1998 (GSS98) said the same. This is down from the 40% found in the 2001 EBRP survey. One last example revealed that 36% of people in the 2000 EBRP survey said they trust people in their neighborhoods a lot while 47% in the 2000 South data said the same. The percentages from the 2001 EBRP survey is 40%, which is below the 2000 South data and above the 2000 EBRP data. The difference could take into account the timing of each data set as well as whether respondents were new to the area at the time of the survey or even if there had been a recent crime in the area.

All of the above information concludes into some very interesting revelations. It was originally believed that religion was the basis or the foundation that trust was built on. However, after analysis of the data was complete, it was revealed that religion was significant in regularity of church attendance and level of confidence in the church. The original hypotheses hoped to prove that the value and belief system instilled by the church carried over into relationships that were not directly linked to the church.

Although there were statistically significant trust relationships shown, they were based on something other than a religious value system. These relationships may indeed be built on whether or not people view other people as having similar interests, values and goals. This means we probably trust people in our neighborhoods because we live together and support one another. We trust people we work with because we have to work together for one common purpose and it is beneficial to everyone involved if there are good working relationships in existence. We probably don't trust people who work in places where we shop as much because we know their underlying goals or reasons behind a

Good

relationship are profit driven. In other words, the relationship is not of a personal nature as in the case with people in our neighborhoods and in the workplace. Trust, then, is ingrained within people in the context of certain cultures, societies, neighborhoods and workplaces. If there are incentives present that warrant trustworthiness, then the levels of trust will be high.

REFERENCES

Russell Sage Foundation News, Issue No. 6, 2000.

www.genesys-sampling.com/Default.htm/intro/introgen.htm

Very good report. Hypotheses laid out clearly & further developed skillfully, based on the results. Discussion very resourceful. Some technical discussion too thin. Needed better reporting of statistics.

A-

Crosstabs

Case Processing Summary

	Cases					
	Valid		Missing		Total	
	N	Percent	N	Percent	N	Percent
V05RA Confidence in The Church or organized religion (R) * V24R Church attendance (R)	329	91.9%	29	8.1%	358	100.0%

V05RA Confidence in The Church or organized religion (R) * V24R Church attendance (R) Crosstabulation

			V24R Church attendance (R)	
			2 Less often than that	3 A few times per year
V05RA Confidence in The Church or organized religion (R)	1 None (Volunteered)	Count % within V24R Church attendance (R)	3 18.8%	
	2 Very little	Count % within V24R Church attendance (R)	4 25.0%	2 5.1%
	3 Some	Count % within V24R Church attendance (R)	6 37.5%	17 43.6%
	4 Quite a lot	Count % within V24R Church attendance (R)	2 12.5%	8 20.5%
	5 A great deal	Count % within V24R Church attendance (R)	1 6.3%	12 30.8%
Total		Count % within V24R Church attendance (R)	16 100.0%	39 100.0%

V05RA Confidence in The Church or organized religion (R) * V24R Church attendance (R) Crosstabulation

			V24R Church attendance (R)	
			4 Once or twice a month	5 Almost every week
V05RA Confidence in The Church or organized religion (R)	1 None (Volunteered)	Count % within V24R Church attendance (R)	1 1.5%	
	2 Very little	Count % within V24R Church attendance (R)	4 6.1%	
	3 Some	Count % within V24R Church attendance (R)	18 27.3%	10 14.7%
	4 Quite a lot	Count % within V24R Church attendance (R)	21 31.8%	26 38.2%
	5 A great deal	Count % within V24R Church attendance (R)	22 33.3%	32 47.1%
Total		Count % within V24R Church attendance (R)	66 100.0%	68 100.0%

V05RA Confidence in The Church or organized religion (R) * V24R Church attendance (R) Crosstabulation

			V24R	
			6 Every week (or more often)	Total
V05RA Confidence in The Church or organized religion (R)	1 None (Volunteered)	Count % within V24R Church attendance (R)	1 .7%	5 1.5%
	2 Very little	Count % within V24R Church attendance (R)	1 .7%	11 3.3%
	3 Some	Count % within V24R Church attendance (R)	7 5.0%	58 17.6%
	4 Quite a lot	Count % within V24R Church attendance (R)	40 28.6%	97 29.5%
	5 A great deal	Count % within V24R Church attendance (R)	91 65.0%	158 48.0%
Total		Count % within V24R Church attendance (R)	140 100.0%	329 100.0%

Chi-Square Tests

	Value	df	Asymp. Sig. (2-sided)
Pearson Chi-Square	122.061 ^a	16	.000
Likelihood Ratio	95.240	16	.000
Linear-by-Linear Association	72.845	1	.000
N of Valid Cases	329		

a. 12 cells (48.0%) have expected count less than 5. The minimum expected count is .24.

Symmetric Measures

		Value	Asymp. Std. Error ^a	Approx. T ^b	Approx. Sig.
Ordinal by Ordinal	Gamma	.516	.055	8.095	.000
N of Valid Cases		329			

a. Not assuming the null hypothesis.

b. Using the asymptotic standard error assuming the null hypothesis.

Crosstabs

Case Processing Summary

	Cases					
	Valid		Missing		Total	
	N	Percent	N	Percent	N	Percent
V04R Trust people (R) * V05RA Confidence in The Church or organized religion (R)	353	98.6%	5	1.4%	358	100.0%

V04R Trust people (R) * V05RA Confidence in The Church or organized religion (R) Crosstabulation

			V05RA Confidence in The Church or organized religion (R)			
			1 None (Volunteered)	2 Very little	3 Some	4 Quite a lot
V04R Trust people (R)	1 Can't be too careful	Count % within V05RA Confidence in The Church or organized religion (R)	1 20.0%	14 60.9%	30 47.6%	50 51.0%
	2 Other, depends (Volunteered)	Count % within V05RA Confidence in The Church or organized religion (R)	1 20.0%	1 4.3%	8 12.7%	9 9.2%
	3 Most people can be trusted	Count % within V05RA Confidence in The Church or organized religion (R)	3 60.0%	8 34.8%	25 39.7%	39 39.8%
Total		Count % within V05RA Confidence in The Church or organized religion (R)	5 100.0%	23 100.0%	63 100.0%	98 100.0%

V04R Trust people (R) * V05RA Confidence in The Church or organized religion (R) Crosstabulation

			V05RA	
			5 A great deal	Total
V04R Trust people (R)	1 Can't be too careful	Count % within V05RA Confidence in The Church or organized religion (R)	90 54.9%	185 52.4%
	2 Other, depends (Volunteered)	Count % within V05RA Confidence in The Church or organized religion (R)	7 4.3%	26 7.4%
	3 Most people can be trusted	Count % within V05RA Confidence in The Church or organized religion (R)	67 40.9%	142 40.2%
Total		Count % within V05RA Confidence in The Church or organized religion (R)	164 100.0%	353 100.0%

Chi-Square Tests

	Value	df	Asymp. Sig. (2-sided)
Pearson Chi-Square	8.876 ^a	8	.353
Likelihood Ratio	8.737	8	.365
Linear-by-Linear Association	.155	1	.694
N of Valid Cases	353		

a. 5 cells (33.3%) have expected count less than 5. The minimum expected count is .37.

Symmetric Measures

		Value	Asymp. Std. Error ^a	Approx. T ^b	Approx. Sig.
Ordinal by Ordinal	Gamma	-.031	.078	-.397	.692
N of Valid Cases		353			

a. Not assuming the null hypothesis.

b. Using the asymptotic standard error assuming the null hypothesis.

Crosstabs

Case Processing Summary

	Cases					
	Valid		Missing		Total	
	N	Percent	N	Percent	N	Percent
V06RA Trust People in your neighborhood (R) * V04R Trust people (R)	346	96.6%	12	3.4%	358	100.0%

V06RA Trust People in your neighborhood (R) * V04R Trust people (R) Crosstabulation

			V04R Trust people (R)	
			1 Can't be too careful	2 Other, depends (Volunteered)
V06RA Trust People in your neighborhood (R)	0 Trust them not at all	Count	11	
		% within V04R Trust people (R)	6.0%	
	1 Trust them only a little	Count	36	3
		% within V04R Trust people (R)	19.8%	12.5%
	2 Trust them some	Count	78	13
		% within V04R Trust people (R)	42.9%	54.2%
	3 Trust them a lot	Count	57	8
		% within V04R Trust people (R)	31.3%	33.3%
Total		Count	182	24
		% within V04R Trust people (R)	100.0%	100.0%

V06RA Trust People in your neighborhood (R) * V04R Trust people (R) Crosstabulation

			V04R Trust	
			3 Most people can be trusted	Total
V06RA Trust People in your neighborhood (R)	0 Trust them not at all	Count % within V04R Trust people (R)	1 .7%	12 3.5%
	1 Trust them only a little	Count % within V04R Trust people (R)	12 8.6%	51 14.7%
	2 Trust them some	Count % within V04R Trust people (R)	52 37.1%	143 41.3%
	3 Trust them a lot	Count % within V04R Trust people (R)	75 53.6%	140 40.5%
Total	Count % within V04R Trust people (R)	140 100.0%	346 100.0%	

Chi-Square Tests

	Value	df	Asymp. Sig. (2-sided)
Pearson Chi-Square	25.869 ^a	6	.000
Likelihood Ratio	27.617	6	.000
Linear-by-Linear Association	23.448	1	.000
N of Valid Cases	346		

a. 3 cells (25.0%) have expected count less than 5. The minimum expected count is .83.

Symmetric Measures

		Value	Asymp. Std. Error ^a	Approx. T ^b	Approx. Sig.
Ordinal by Ordinal	Gamma	.388	.074	4.956	.000
N of Valid Cases		346			

a. Not assuming the null hypothesis.

b. Using the asymptotic standard error assuming the null hypothesis.

Crosstabs

Case Processing Summary

	Cases					
	Valid		Missing		Total	
	N	Percent	N	Percent	N	Percent
V06RB Trust People you work with (R) * V06RA Trust People in your neighborhood (R)	297	83.0%	61	17.0%	358	100.0%

V06RB Trust People you work with (R) * V06RA Trust People in your neighborhood (R) Crosstabulation

			V06RA Trust People in your neighborhood (R)		
			0 Trust them not at all	1 Trust them only a little	2 Trust them some
V06RB Trust People you work with (R)	0 Trust them not at all	Count % within V06RA Trust People in your neighborhood (R)	2 16.7%	1 2.3%	8 6.3%
	1 Trust them only a little	Count % within V06RA Trust People in your neighborhood (R)	3 25.0%	11 25.0%	16 12.7%
	2 Trust them some	Count % within V06RA Trust People in your neighborhood (R)	7 58.3%	18 40.9%	67 53.2%
	3 Trust them a lot	Count % within V06RA Trust People in your neighborhood (R)		14 31.8%	35 27.8%
Total		Count % within V06RA Trust People in your neighborhood (R)	12 100.0%	44 100.0%	126 100.0%

V06RB Trust People you work with (R) * V06RA Trust People in your neighborhood (R) Crosstabulation

			V06RA	
			3 Trust them a lot	Total
V06RB Trust People you work with (R)	0 Trust them not at all	Count % within V06RA Trust People in your neighborhood (R)	2 1.7%	13 4.4%
	1 Trust them only a little	Count % within V06RA Trust People in your neighborhood (R)	8 7.0%	38 12.8%
	2 Trust them some	Count % within V06RA Trust People in your neighborhood (R)	33 28.7%	125 42.1%
	3 Trust them a lot	Count % within V06RA Trust People in your neighborhood (R)	72 62.6%	121 40.7%
Total		Count % within V06RA Trust People in your neighborhood (R)	115 100.0%	297 100.0%

Chi-Square Tests

	Value	df	Asymp. Sig. (2-sided)
Pearson Chi-Square	50.910 ^a	9	.000
Likelihood Ratio	52.806	9	.000
Linear-by-Linear Association	30.349	1	.000
N of Valid Cases	297		

a. 4 cells (25.0%) have expected count less than 5. The minimum expected count is .53.

Symmetric Measures

		Value	Asymp. Std. Error ^a	Approx. T ^b	Approx. Sig.
Ordinal by Ordinal	Gamma	.460	.067	6.331	.000
N of Valid Cases		297			

a. Not assuming the null hypothesis.

b. Using the asymptotic standard error assuming the null hypothesis.

Crosstabs

Case Processing Summary

	Cases					
	Valid		Missing		Total	
	N	Percent	N	Percent	N	Percent
V06RD Trust People who work in the stores where you shop (R) * V06RB Trust People you work with (R)	284	79.3%	74	20.7%	358	100.0%

**V06RD Trust People who work in the stores where you shop (R) * V06RB Trust People you work with (R)
Crosstabulation**

			V06RB Trust People you work	
			0 Trust them not at all	1 Trust them only a little
V06RD Trust People who work in the stores where you shop (R)	0 Trust them not at all	Count	4	6
		% within V06RB Trust People you work with (R)	30.8%	17.6%
	1 Trust them only a little	Count	2	15
		% within V06RB Trust People you work with (R)	15.4%	44.1%
	2 Trust them some	Count	6	9
		% within V06RB Trust People you work with (R)	46.2%	26.5%
	3 Trust them a lot	Count	1	4
		% within V06RB Trust People you work with (R)	7.7%	11.8%
Total		Count	13	34
		% within V06RB Trust People you work with (R)	100.0%	100.0%

**V06RD Trust People who work in the stores where you shop (R) * V06RB Trust People you work with (R)
Crosstabulation**

			V06RB Trust People you	
			2 Trust them some	3 Trust them a lot
V06RD Trust People who work in the stores where you shop (R)	0 Trust them not at all	Count % within V06RB Trust People you work with (R)	8 6.8%	4 3.3%
	1 Trust them only a little	Count % within V06RB Trust People you work with (R)	32 27.4%	20 16.7%
	2 Trust them some	Count % within V06RB Trust People you work with (R)	72 61.5%	71 59.2%
	3 Trust them a lot	Count % within V06RB Trust People you work with (R)	5 4.3%	25 20.8%
Total		Count % within V06RB Trust People you work with (R)	117 100.0%	120 100.0%

**V06RD Trust People who work in the stores where you shop (R) * V06RB Trust People you work with (R)
Crosstabulation**

			Total
V06RD Trust People who work in the stores where you shop (R)	0 Trust them not at all	Count % within V06RB Trust People you work with (R)	22 7.7%
	1 Trust them only a little	Count % within V06RB Trust People you work with (R)	69 24.3%
	2 Trust them some	Count % within V06RB Trust People you work with (R)	158 55.6%
	3 Trust them a lot	Count % within V06RB Trust People you work with (R)	35 12.3%
Total		Count % within V06RB Trust People you work with (R)	284 100.0%

Chi-Square Tests

	Value	df	Asymp. Sig. (2-sided)
Pearson Chi-Square	45.435 ^a	9	.000
Likelihood Ratio	42.746	9	.000
Linear-by-Linear Association	25.470	1	.000
N of Valid Cases	284		

a. 5 cells (31.3%) have expected count less than 5. The minimum expected count is 1.01.

Symmetric Measures

		Value	Asymp. Std. Error ^a	Approx. T ^b	Approx. Sig.
Ordinal by Ordinal	Gamma	.424	.079	5.039	.000
N of Valid Cases		284			

a. Not assuming the null hypothesis.

b. Using the asymptotic standard error assuming the null hypothesis.

Frequencies

Statistics

		V24R Church attendance (R)	V05RA Confidence in The Church or organized religion (R)	V04R Trust people (R)	V06RA Trust People in your neighborhood (R)	V06RB Trust People you work with (R)	V06RD Trust People who work in the stores where you shop (R)
N	Valid	332	355	356	348	306	330
	Missing	26	3	2	10	52	28

Frequency Table

V24R Church attendance (R)

		Frequency	Percent	Valid Percent	Cumulative Percent
Valid	2 Less often than that	16	4.5	4.8	4.8
	3 A few times per year	40	11.2	12.0	16.9
	4 Once or twice a month	66	18.4	19.9	36.7
	5 Almost every week	69	19.3	20.8	57.5
	6 Every week (or more often)	141	39.4	42.5	100.0
	Total	332	92.7	100.0	
Missing	8 Don't Know	4	1.1		
	9 Refused	3	.8		
	System	19	5.3		
	Total	26	7.3		
Total	358	100.0			

V05RA Confidence in The Church or organized religion (R)

		Frequency	Percent	Valid Percent	Cumulative Percent
Valid	1 None (Volunteered)	5	1.4	1.4	1.4
	2 Very little	24	6.7	6.8	8.2
	3 Some	63	17.6	17.7	25.9
	4 Quite a lot	98	27.4	27.6	53.5
	5 A great deal	165	46.1	46.5	100.0
	Total	355	99.2	100.0	
Missing	9 Don't know, No answer	3	.8		
Total		358	100.0		

V04R Trust people (R)

		Frequency	Percent	Valid Percent	Cumulative Percent
Valid	1 Can't be too careful	187	52.2	52.5	52.5
	2 Other, depends (Volunteered)	26	7.3	7.3	59.8
	3 Most people can be trusted	143	39.9	40.2	100.0
	Total	356	99.4	100.0	
Missing	9 Don't know, No answer	2	.6		
Total		358	100.0		

V06RA Trust People in your neighborhood (R)

		Frequency	Percent	Valid Percent	Cumulative Percent
Valid	0 Trust them not at all	12	3.4	3.4	3.4
	1 Trust them only a little	51	14.2	14.7	18.1
	2 Trust them some	143	39.9	41.1	59.2
	3 Trust them a lot	142	39.7	40.8	100.0
	Total	348	97.2	100.0	
Missing	System	10	2.8		
Total		358	100.0		

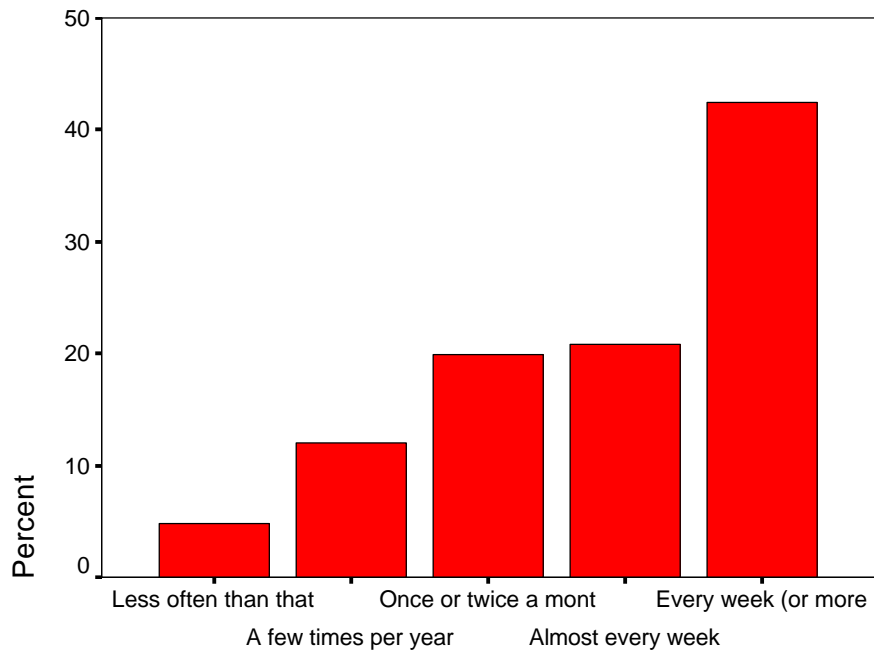
V06RB Trust People you work with (R)

		Frequency	Percent	Valid Percent	Cumulative Percent
Valid	0 Trust them not at all	13	3.6	4.2	4.2
	1 Trust them only a little	38	10.6	12.4	16.7
	2 Trust them some	129	36.0	42.2	58.8
	3 Trust them a lot	126	35.2	41.2	100.0
	Total	306	85.5	100.0	
Missing	System	52	14.5		
Total		358	100.0		

V06RD Trust People who work in the stores where you shop (R)

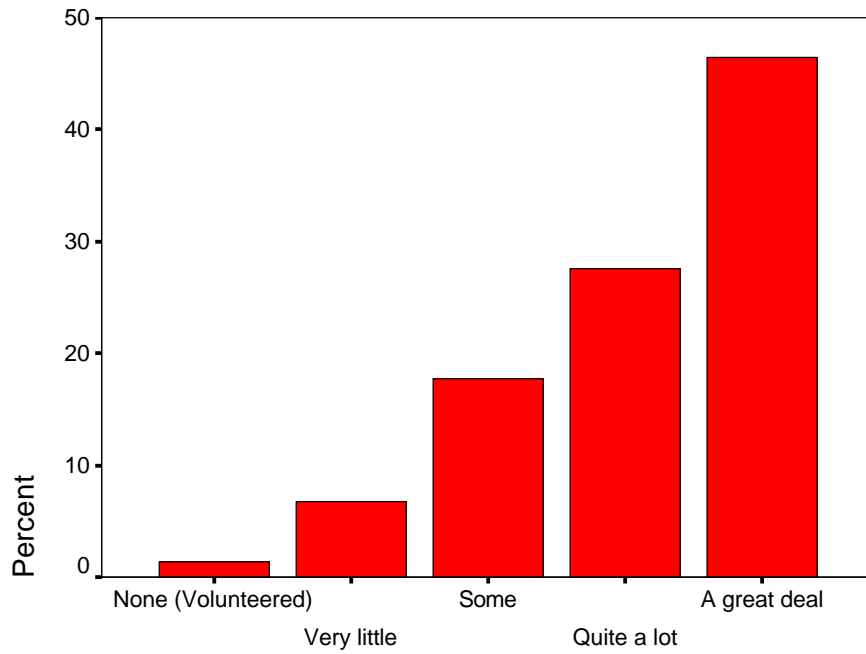
		Frequency	Percent	Valid Percent	Cumulative Percent
Valid	0 Trust them not at all	26	7.3	7.9	7.9
	1 Trust them only a little	79	22.1	23.9	31.8
	2 Trust them some	185	51.7	56.1	87.9
	3 Trust them a lot	40	11.2	12.1	100.0
	Total	330	92.2	100.0	
Missing	System	28	7.8		
Total		358	100.0		

Graph



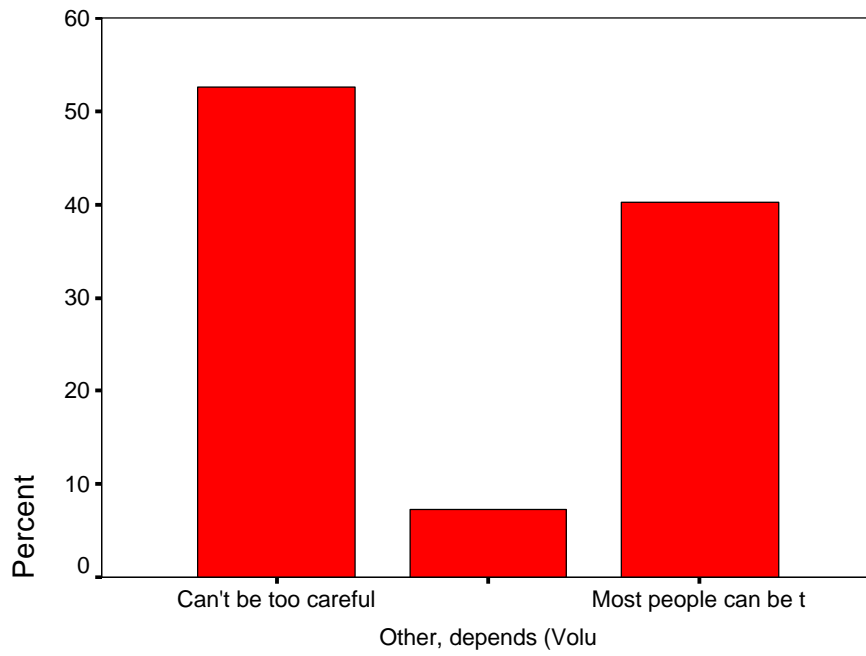
Church attendance (R)

Graph



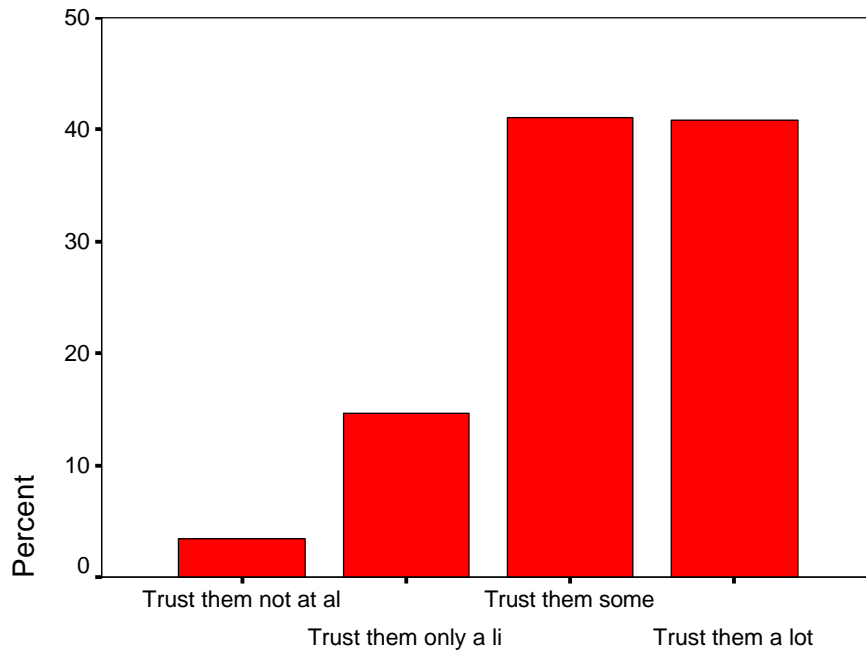
Confidence in The Church or organized religion (R)

Graph



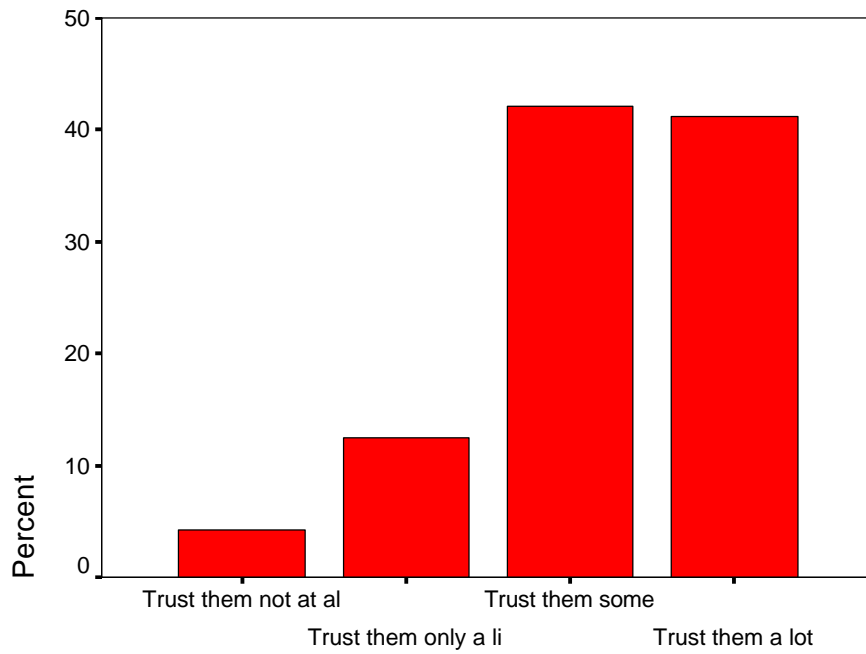
Trust people (R)

Graph



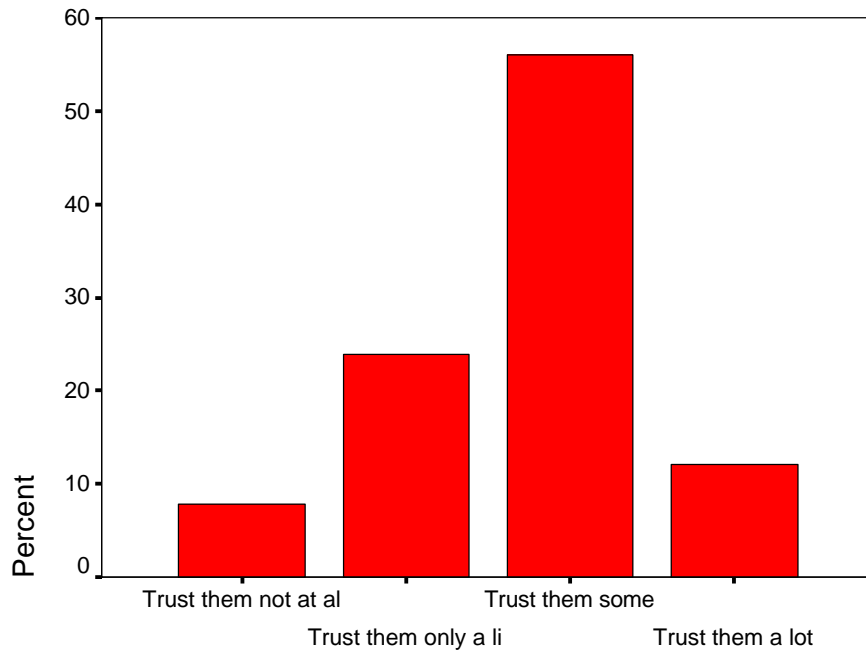
Trust People in your neighborhood (R)

Graph



Trust People you work with (R)

Graph



Trust People who work in the stores where you shop (R)