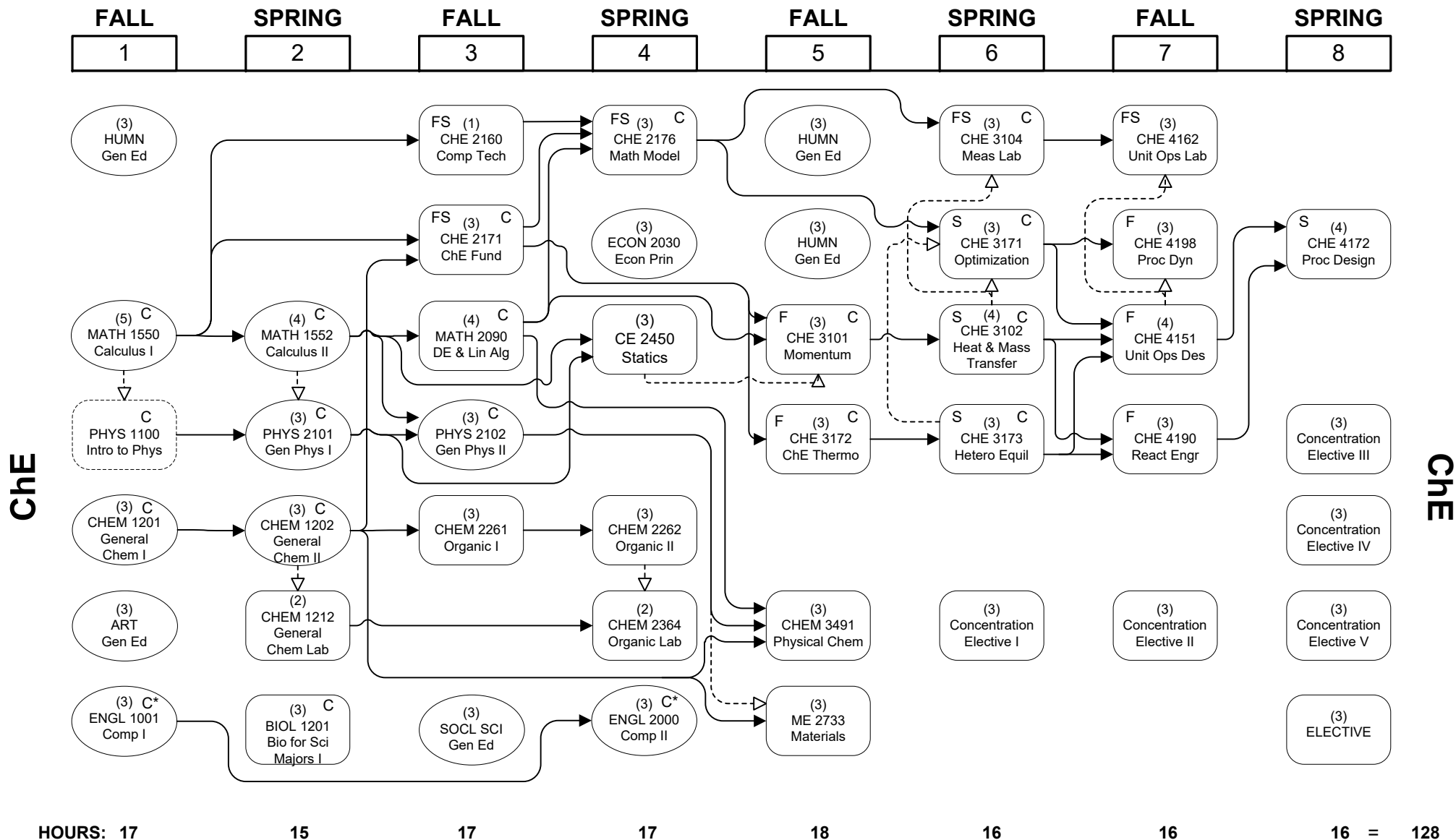


# CHEMICAL ENGINEERING



FLOWCHART LEGEND			
—————▶	Credit required	C*	Grade of "C" or better required in all English courses
-----▶	Credit or registration required	C	<b>Grade of "C" or better in these courses is required before enrolling in any subsequent courses that cite them as a prerequisite</b>
110 ChE Bldg	Chemical Engineering Office		
	General Education - See 2010-2011 General Catalog		
		FS	Course taught both fall and spring semesters
		F	Course taught in fall only
		S	Course taught in spring only
			<a href="http://www.che.lsu.edu">www.che.lsu.edu</a>