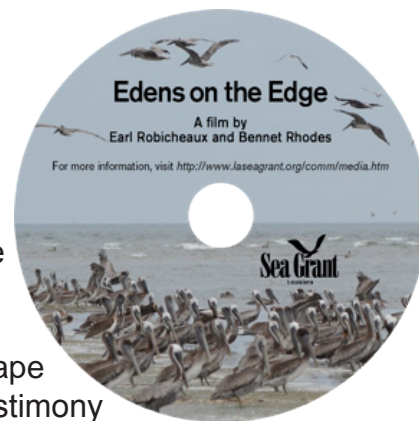


Wildlife Refuges Documentary Released

The 23-minute documentary *Edens on the Edge* – a Louisiana Sea Grant (LSG) production – chronicles the importance of wildlife refuges located in the state’s coastal zone.

“As the great Russian filmmaker Andrei Tarkowski said – ‘The landscape has a soul,’” said Earl Robicheaux, the film’s production supervisor and creator of the video’s soundscape. “Indeed, in many of his films the camera portrays a certain sadness and struggle, almost as if the landscape were speaking to you with no words and minimal sound. It is a strong testimony to the power of place.



“In that regard, *Edens on the Edge* functions as a true Louisiana conservationist and stewardship effort. It portrays the sheer phenomenal beauty of Louisiana’s coastal refuges, wildlife and landscape, while also serving as a reminder that many of these habitats are threatened due to forces such as coastal erosion, land subsidence and sea level rise.”

Robicheaux, who has worked with LSG previously on the *Grand Isle Diaries* soundscape – tapped the talents of videographer Bennet Rhodes for *Edens on the Edge*. “The objective was to shoot the sheer abundance of both plant and wildlife in south Louisiana – exposing the viewer to the mostly wetland aspects of these important refuges,” said Rhodes. “The result highlights the uniqueness of Louisiana’s coast to North America and reinforces the need to preserve our wetlands.”

The video is available online for viewing at www.laseagrant.org/media/Edens-on-the-Edge.avi. A free copy on DVD can be ordered by contacting LSG publications coordinator Jessica Schexnayder at jsche15@lsu.edu. There is a \$5 charge to cover postage and handling of the DVD. There is no charge to persons picking up the DVD at Sea Grant offices on the Louisiana State University Baton Rouge campus.

“This documentary is intended to serve as an important instructive tool for the general public while also serving as a valuable educational resource for future generations,” added Robicheaux.



A Joint Publication of Louisiana Sea Grant and LSU AgCenter



LOUISIANA REGULATIONS

Spring Shrimp Season

The dates for the 2013 Louisiana spring shrimp season were announced based on information provided by Louisiana Department of Wildlife and Fisheries (LDWF) biologists and on public comments.

The opening dates for the 2013 Louisiana shrimp season are as follows:

1. That portion of state inside waters from the eastern shore of Bayou Lafourche westward to the western shore of Vermilion Bay and Southwest Pass at Marsh Island, and that portion of state outside waters extending three nautical miles seaward from the shoreline from the Atchafalaya River Ship Channel at Eugene Island as delineated by the Channel red buoy line westward to the western shore of Freshwater Bayou Canal at 92 degrees 18 minutes 33 seconds west longitude opened at 6 a.m. May 13
2. That portion of state inside waters from the eastern shore of South Pass of the Mississippi River westward to the eastern shore of Bayou Lafourche opened at 6 a.m. May 20
3. That portion of state inside waters from the Mississippi/Louisiana state line southward to the eastern shore of South Pass of the Mississippi River opened at 6 a.m. May 27
4. That portion of state inside waters from the western shore of Vermilion Bay and Southwest Pass at Marsh Island westward to the Louisiana/Texas state line to the western shore of Freshwater Bayou opened at 6 a.m. May 27

LDWF biologists monitored water conditions and conducted approximately 550 trawl samples throughout the state's estuarine and nearshore waters over the last five weeks to develop management recommendations for the spring shrimp season opening dates. The department provided projections of the dates when a minimum of 50 percent of the inshore brown shrimp population would reach 100 count per pound or larger.

Recreational Red Snapper Season

LDWF announced a change in the recreational red snapper season and bag limits, to mirror the season set in federal waters by NOAA last week.

State Red Snapper Season

The state recreational red snapper season first opened March 23, 2013, on weekends only, with a recreational bag limit of three fish per person per day at a 16-inch minimum.

Beginning June 1 through June 24, the state red snapper season will be open seven days a week, with a daily bag limit of two fish per person at a 16-inch minimum length.

On June 25, the season will revert back to weekends only through Sept. 30.

A weekend is defined as Friday, Saturday and Sunday, with the exception of Memorial Day and Labor Day, when Monday will be classified as a weekend day as well.

The Louisiana Wildlife and Fisheries Commission will discuss the red snapper season modifications at its June 2013 meeting.

GULF OF MEXICO REGULATIONS

Gulf of Mexico Red Snapper Quota and Sets 2013 Federal Recreational Season

NOAA Fisheries announces a final rule for Gulf of Mexico Red Snapper. The rule sets the 2013 quotas for commercial and recreational red snapper harvest. The agency is increasing the quota because the population is growing. The red snapper overall quota will increase from 8.080 million pounds whole weight in 2012 to 8.460 million pounds whole weight for 2013.

	2012	2013
Overall Quota	8.080	8.460
Commercial Allocation (51%)	4.121	4.315
Recreational Allocation (49%)	3.959	4.145

Recreational Season

The federal recreational season for Gulf of Mexico red snapper begins June 1, 2013, with a two-fish bag limit. During development of this final rule, NOAA Fisheries re-calculated the projected 2013 red snapper recreational season lengths off each Gulf state using updated recreational landings data as well as new information from Louisiana and Texas. The method for calculating the dates for the federal season for each state are available online at

http://sero.nmfs.noaa.gov/sustainable_fisheries/gulf_fisheries/red_snapper/documents/pdfs/2013_red_snapper_emergency_regs.pdf.

2013 Season Lengths

- Mississippi and Alabama: In federal and state waters off Mississippi and Alabama due to consistent regulations, the season will be 34 days and close on July 5, 2013, at 12:01 a.m., local time.
- Texas: In federal waters off Texas due to inconsistent regulations, the season will be 17 days,

Lagniappe Fisheries Newsletter

Editor: Julie Anderson

Web coordinator: Melissa Castleberry

Copy editor: Roy Kron

Layout/design: Jessica Schexnayder

and close on June 18, 2013, at 12:01 a.m., local time. Texas state waters are open all year for recreational red snapper fishing with a four-fish bag limit.

- Louisiana: In federal waters off Louisiana due to inconsistent regulations, the season will be 24 days, and close on June 25, 2013, at 12:01 a.m., local time. Louisiana state waters are open weekends only (Friday, Saturday, Sunday), March 23 - September 30, 2013, with a three-fish bag limit.
- Florida: In federal waters off Florida due to inconsistent regulations, the season will be 26 days and close on June 27, 2013, at 12:01 a.m., local time. Florida state waters are open June 1 - July 14, 2013, with a two-fish bag limit.

The Gulf of Mexico Fishery Management Council will review the 2013 red snapper population assessment during their June meeting in Pensacola, Fla. The council may request an emergency rule to increase the quota again based on the new scientific information and request NOAA Fisheries to reopen the recreational season for red snapper later in the year.

Electronic copies of the documents are available. Final Rule: Federal eRulemaking Portal search NOAA-NMFS-2013-0055 www.regulations.gov. Amendment: Gulf of Mexico Fishery Management Council <http://www.gulfcouncil.org> and NOAA Fisheries <http://sero.nmfs.noaa.gov/>. This summary is not a substitute for the actual regulations. We encourage you to read the full text of the regulations, available at <http://sero.nmfs.noaa.gov/>.

Gulf of Mexico Gray Triggerfish

On May 9, 2013, NOAA Fisheries approved Amendment 37 to the Fishery Management Plan for the Reef Fish Resources of the Gulf of Mexico. This rule adjusts the commercial and recreational annual catch limits and annual catch targets, establishes a 12-fish commercial trip limit and a 2-fish recreational daily bag limit, establishes an annual fishing season closure from June 1 through July 31 for the commercial and recreational sectors, and establishes an overage adjustment for the recreational sector. A final rule implementing these regulations was published in the *Federal Register* on May 9, 2013, (78 FR 27088). The commercial and recreational annual catch limits, annual catch targets, and in-season recreational closure authority are effective immediately. The commercial trip limit, recreational bag limit, and annual seasonal closure for commercial and recreational sectors become effective on June 10, 2013.

Gray triggerfish is overfished (population abundance is too low) and undergoing overfishing (rate of removal too high). The Magnuson-Stevens Fishery Conservation and Management Act requires that overfished stocks be rebuilt and that overfishing be halted. Therefore, the primary purpose of Amendment 37 is to end overfishing of gray triggerfish and allow the stock to rebuild to healthy levels.

The commercial allocation is 21 percent and the recreational allocation is 79 percent of the annual catch limit. Until a future stock assessment is completed or the annual catch limit is exceeded, the commercial annual catch limit and annual catch target will be 64,100 pounds and 60,900 pounds, respectively. The recreational annual catch limit and annual catch target will be 241,200 pounds and 217,100 pounds, respectively.

This rule establishes a commercial sector trip limit of 12-fish throughout the fishing year, and a seasonal closure to the harvest of gray triggerfish from June 1 through July 31. Implementing a trip limit and closed season is expected to allow a longer fishing season for the commercial sector.

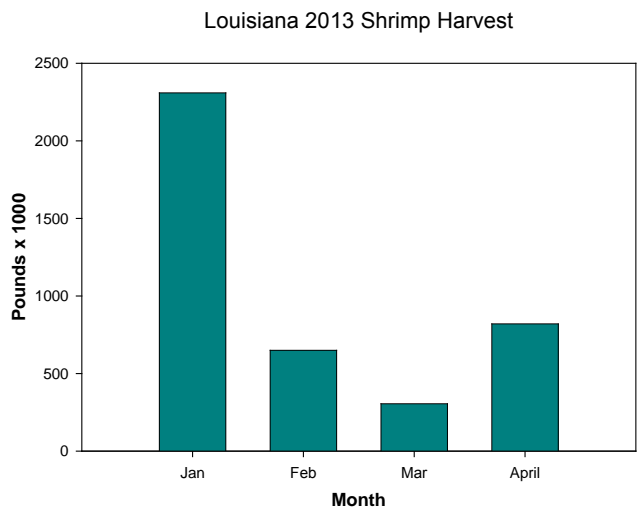
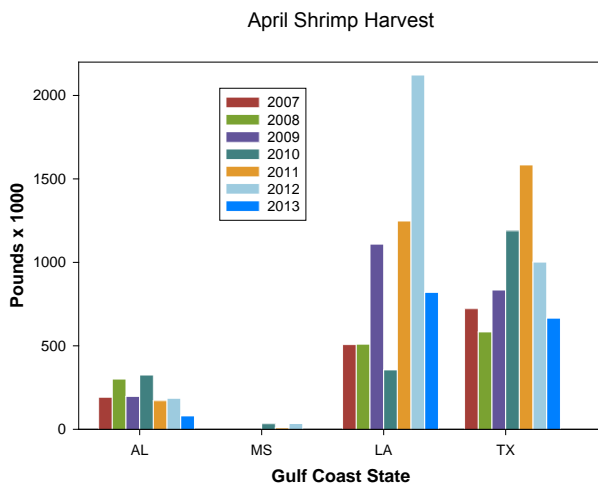
This rule establishes a recreational daily bag limit of 2 fish per angler within the 20-fish reef fish aggregate bag limit, and establishes a seasonal closure to the harvest of gray triggerfish from June 1 through July 31. Implementing a trip limit and closed season is expected to allow a longer fishing season for the recreational sector.

The rule replaces the current post-season accountability measure with an in-season closure authority based on the recreational annual catch target and establishes an overage adjustment to reduce the gray triggerfish annual catch limit and annual catch target by the amount of the overage. This overage adjustment would apply if gray triggerfish is overfished.

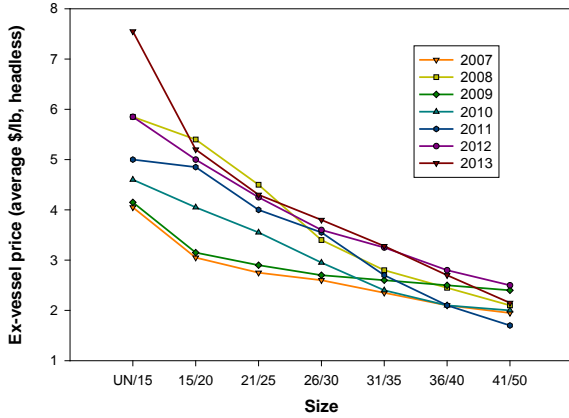
Electronic copies of the amendment and final rule may be obtained from the NOAA Fisheries [website](#). For more information on Amendment 37 and the gray triggerfish rebuilding plan, please refer to the [Frequently Asked Questions](#).

Louisiana Shrimp Watch

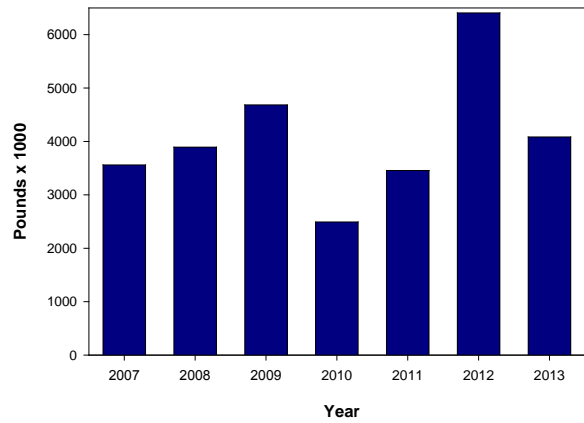
Louisiana specific data portrayed in the graphics are selected from preliminary data posted by NOAA on their website. All data portrayed are subject to final revision and approval by NOAA. Shrimp landings are ex-vessel prices, inclusive of all species harvested. Missing, inadequate or withheld reports are portrayed as “zero” in these graphics. Price graphics reflect central Gulf states only (Texas and Florida are reported independently). For more information, please refer to: www.st.nmfs.noaa.gov/st1/market_news/index.html.



April 2013 Northern GoM Shrimp Prices



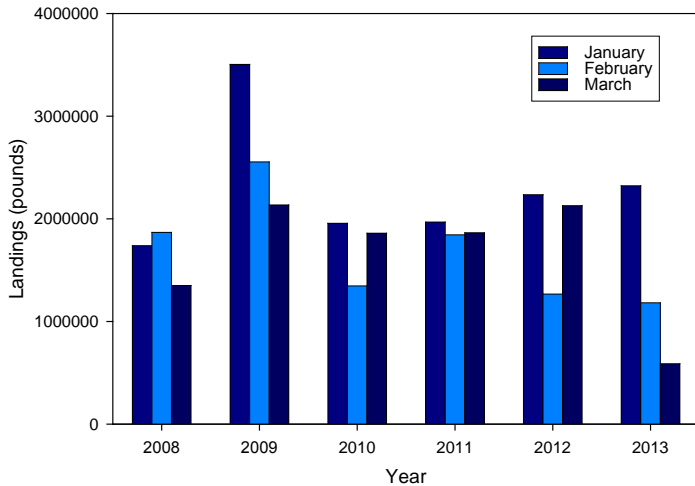
Louisiana Year to Date Shrimp Harvest



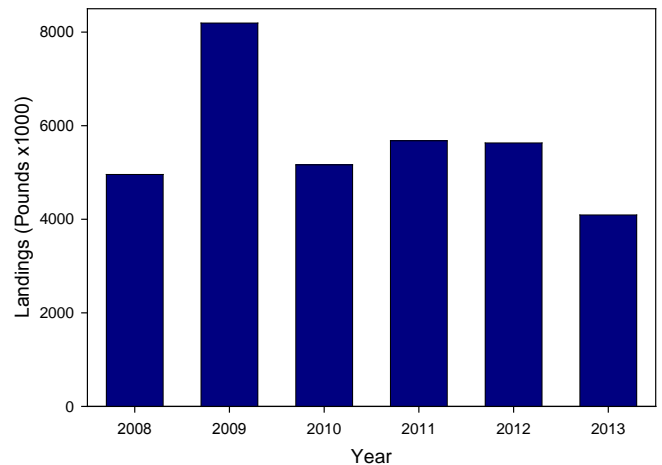
Louisiana Blue Crab Watch

In addition to the monthly shrimp data, we will begin sharing the Louisiana state data as it comes available based on preliminary state landings data. All data portrayed are subject to final revision and approval.

Monthly Louisiana Blue Crab Landings



Louisiana Year to Date Blue Crab Harvest January-March



Fish Gear Coordinates- May

In accordance with the provisions of R.S. 56:700.1 et. seq., notice is given that six claims in the amount of \$27,762.50 were received for payment during the period April 1, 2013 - April 30, 2013. There were six paid and zero denied.

Latitude/Longitude Coordinates, in Degree Decimal Minutes, of reported underwater obstructions are:

29 04.298 89 19.928 PLAQUEMINES
 29 23.662 90 01.761 JEFFERSON
 29 33.184 92 30.212 VERMILION
 29 44.396 93 23.924 CAMERON
 29 45.910 89 30.810 SAINT BERNARD
 29 50.530 89 41.460 SAINT BERNARD

A list of claimants and amounts paid can be obtained from Gwendolyn Thomas, Administrator, Fishermen's Gear Compensation Fund, P.O. Box 44277, Baton Rouge, LA 70804 or you can call (225)342-9388.

The Gumbo Pot Raw Oysters on the Half Shell

Scrub the oysters under cold water with a stiff brush to remove the dirt. Next, find a durable thick cloth to use as a mitt, place the oyster, cup-side down in the palm of your towel-covered hand with the hinge facing you; have a small bowl handy to catch the delicious juice. Insert the tip of an oyster knife or dull butter knife as far into the hinge as it will go; don't jab it in there or you could break the shell. With gentle force, twist the knife back and forth to pry the shell open. Using the knife, cut the muscle away from the top shell and discard it. Run the knife underneath the oyster to detach it completely, but leave it in its shell. Tip out the briny liquor into the bowl and pour it back over the shucked oysters. Nestle the oysters in a bed of crushed ice or rock salt to keep them steady. And don't forget the Louisiana hot sauce and lemon wedges!

Recipe courtesy of *Louisiana Kitchen & Culture* and Smitty's Seafood & Oyster Bar. For more recipes or to subscribe to their magazine or free newsletter, please visit <http://louisiana.kitchenandculture.com/>

If you have a favorite seafood recipe that you would like to share, please send it to Julie Anderson janderson@agcenter.lsu.edu for inclusion in future issues.



For more information, contact your local extension agent:



Thu Bui – Assistant Extension Agent, Fisheries
St. Mary, Iberia, and Vermilion Parishes
St. Mary Parish Court House
500 Main Street Rm. 314
Franklin, LA 70538-6199
Phone: (337) 828-4100, ext. 300
Fax: (337) 828-0616
tbui@agcenter.lsu.edu

Carol D. Franze – Associate Area Agent
Southeast Region
21549 Old Covington Hwy
Hammond, LA 70403
Phone: (985) 543-4129
cfranze@agcenter.lsu.edu

Albert 'Rusty' Gaudé – Area Agent, Fisheries
Jefferson, Orleans, St. Charles and St. John Parishes
Phone: (504) 433-3664
agaude@agctr.lsu.edu

Twyla Herrington – Associate Area Agent, Plaquemines Parish
479 F. Edward Hebert Blvd., Suite 201
Belle Chasse, LA 70037
Phone: (504) 433-3664
Fax: (504) 392-2448
therrington@agcenter.lsu.edu

Thomas Hymel – Watershed Educator
Iberia, St. Martin, Lafayette, Vermilion,
St. Landry, & Avoyelles Parishes
Phone: (337) 276-5527
thymel@agctr.lsu.edu

Alan Matherne – Area Agent (Fisheries & Coastal Issues)
Terrebonne, Lafourche, and Assumption Parishes
511 Roussell Street
Houma, LA 70360
Phone: (985) 873-6495
amatherne@agcenter.lsu.edu

Kevin Savoie – Area Agent (Southwest Region)
Natural Resources-Fisheries
Phone: (337) 475-8812
ksavoie@agctr.lsu.edu

Mark Shirley – Area Agent (Aquaculture & Coastal Resources)
Jefferson Davis, Vermilion, Acadia, St. Landry, Evangeline,
Cameron, Calcasieu, Lafayette, Beauregard, & Allen Parishes
Phone: (337) 898-4335
mshirley@agctr.lsu.edu

Research and Extension Programs
Agriculture
Economic/Community Development
Environment/Natural Resources
Families/Nutrition/Health
4-H Youth Programs

We would like to hear from you! Please contact us regarding fishery questions, comments or concerns you would like to see covered in the Lagniappe. Anyone interested in submitting information, such as articles, editorials or photographs pertaining to fishing or fisheries management is encouraged to do so.

Please contact Lagniappe editor Julie Anderson at janderson@agcenter.lsu.edu.

Julie A. Anderson
Assistant Professor
LSU Agcenter & Louisiana Sea Grant
114 RNR Building
Baton Rouge, LA 70803
Phone: 225-578-0771
Fax: 225-578-4227
janderson@agcenter.lsu.edu