



Louisiana Fishery-Related Legislative Bills 2013

The following is a brief summary of bills for this session related to fisheries. For more information, full text, or to track progress of each bill, visit www.legis.state.la.us.

HB81 by Representative James Armes

WILDLIFE & FISHERIES: Provides relative to licenses required by Purple Heart recipients participating in certain hunting and fishing activities. Current Status: Withdrawn from the files of the House - prior to introduction

HB109 by Representative Frankie Howard

FISHING/RECREATIONAL: Removes possession limits for freshwater recreational fishing on Toledo Bend Reservoir. Current Status: Pending House Natural Resources

HB142 by Representative Gordon Dove

FISHING/CRABS: Provides for an exemption from the requirement that crab traps have escape rings. Current Status: Pending House Natural Resources

HB245 by Representative Eddie Lambert

WILDLIFE & FISHERIES: Provides for the issuance of nonresident recreational hunting and fishing licenses at the same cost as resident licenses. Current Status: Pending House Natural Resources

HB236 by Representative Chris Leopold

FISHING/OYSTERS: Increases penalties for certain oyster harvesting violations. Current Status: Pending House Natural Resources

HB345 by Representative Ray Garofalo

FISHING/OYSTERS: Extends the oyster seed ground vessel permit program. Current Status: Pending House Natural Resources

HB378 by Representative Walt Leger III

FISHING/LICENSES: Increases certain fees related to the charter boat fishing industry. Current Status: Pending House Natural Resources

HB426 by Representative James Armes

WILDLIFE & FISHERIES CMN: (Constitutional Amendment) Adds members to the Wildlife and Fisheries Commission. Current Status: Pending House Natural Resources

HB480 by Representative Clay Schexnayder

WILDLIFE & FISHERIES: Moves responsibility for regulation of seismic activity from the office of fisheries to the office of wildlife within the Department of Wildlife and Fisheries. Current Status: Pending House Natural Resources

HB503 by Representative James Armes

WILDLIFE & FISHERIES CMN: Adds new members to the Wildlife and Fisheries Commission. Current Status: Pending House Natural Resources

SB84 by Senator Neil Riser

WILDLIFE/FISHERIES DEPT: Authorizes a check-off for a donation to Hunters for the Hungry when purchasing a fishing or hunting license (gov sig). Current Status: Pending Senate Natural Resources

SB184 by Senator Gerald Long

WILDLIFE/FISHERIES DEPT: Provides that the secretary of the Department of Wildlife and Fisheries shall have oversight of the Louisiana Seafood Promotion and Marketing Board (gov sig). Current Status: Pending Senate and Governmental Affairs

SB211 by Senator Gerald Long

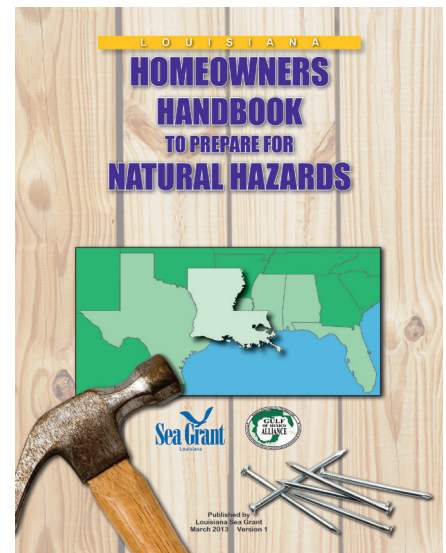
TAX/TAXATION: Provides income tax credits under the Beginning Farmer and Fisherman Income Tax Credit Program (gov sig). Current Status: Pending Senate Revenue and Fiscal Affairs

Free Handbook Shows Homeowners How to Prepare for Hazards

With hurricane season only a few weeks away, now is the time homeowners should start making necessary preparations to protect their homes and loved ones. Through the new *Louisiana Homeowners Handbook to Prepare for Natural Hazards*, residents of Louisiana have a useful resource at their fingertips as they begin readying their families for natural disasters.

The handbook explains the forces of nature that act on structures during storms, including the dangers associated with high winds, heavy rain and storm surge. It further lays out ways to gird a home against these forces to minimize or negate their effects, as well as information on how to reduce the human toll exacted by dangerous storms.

“There are tips and information specific to Louisiana residents for preparing evacuation plans and kits, construction practices, retrofitting, shutter styles, insurance information and emergency contact numbers. Basically everything a homeowner needs to know in coastal Louisiana to be best prepared for coastal hazards,” said Melissa Daigle, resiliency specialist with Louisiana Sea Grant.



The handbook is available in PDF format at www.lsu.edu/sglegal/pubs/handbook.htm as a free download. Free hard copies will be available at various locations throughout coastal parishes, or the book can be ordered for \$5 – to cover postage and handling – by emailing Jessica Schexnayder at jsche15@lsu.edu.

Louisiana Sea Grant produced the handbook with the help of other state, regional and national organizations. The handbook was funded through a program of the Gulf of Mexico Alliance (GOMA) which aims to see each Gulf state prepare its own guidelines for coastal residents in their state. With recent storms – including Hurricanes Katrina and Rita in 2005, Hurricane Gustav in 2008, and the Mississippi River flooding in 2011 – being among the worst in memory, preparing beforehand for a natural hazard has become even more important for residents of vulnerable areas.

“Mississippi and Alabama have already completed the books. Louisiana is the third state of the five Gulf coast states to complete a handbook,” said Daigle. “The goal of the project is to help build a more resilient coast by getting important information into the hands of homeowners along Louisiana’s coast.”

Calendar of Events

Sea Grant now offers a link to upcoming events, workshops, conferences, etc. Please visit <http://www.laseagrant.org/comm/calendar.htm> to see if there is an event near you.

LOUISIANA REGULATIONS

Oyster Season Opened in a Portion of the Public Oyster Seed Grounds

The Louisiana Department of Wildlife and Fisheries (LDWF) opened the oyster season in a portion of the public oyster seed grounds east of the Mississippi River on Monday, April 8 at one-half hour before sunrise.

The oyster season was originally scheduled to open in this area on Oct. 29, 2012, but was delayed to protect recently –settled small oysters, called spat.

The upcoming opening includes the area of public oyster seed grounds east of the Mississippi River, south of the Mississippi River Gulf Outlet, and north of a line of latitude at 29 degrees 34 minutes 48.0 seconds north, and will be restricted to the harvest of oysters three inches in size and greater, for market purposes only.

The Bay Gardene Public Oyster Seed Reservation and the recent oyster cultch plants in Lake Fortuna and Black Bay within the following coordinates shall remain closed:

Lagniappe Fisheries Newsletter

Editor: Julie Anderson

Web coordinator: Melissa Castleberry

Copy editor: Roy Kron

Layout/design: Jessica Schexnayder

Lake Fortuna (2012) – St. Bernard Parish

- 29 degrees 39 minutes 08.04 seconds N
89 degrees 30 minutes 28.93 seconds W
- 29 degrees 38 minutes 33.31 seconds N
89 degrees 29 minutes 15.45 seconds W
- 29 degrees 38 minutes 10.57 seconds N
89 degrees 29 minutes 40.71 seconds W
- 29 degrees 39 minutes 04.41 seconds N
89 degrees 30 minutes 32.61 seconds W

Black Bay (2013) – Plaquemines Parish

- 29 degrees 37 minutes 43.15 seconds N
89 degrees 34 minutes 09.14 seconds W
- 29 degrees 37 minutes 43.15 seconds N
89 degrees 32 minutes 51.49 seconds W
- 29 degrees 36 minutes 34.12 seconds N
89 degrees 32 minutes 51.49 seconds W
- 29 degrees 36 minutes 34.12 seconds N
89 degrees 34 minutes 09.72 seconds W

The Commission authorized LDWF secretary Robert Barham to take emergency action to reopen areas previously closed if the threat to the resource has ended and to open areas if substantial oyster resources are located. Recent biological sampling by LDWF has indicated healthy spat growth in this area, and an opening would allow for increased economic opportunities for the Louisiana oyster industry.

Public notice of any opening, delay or closure of a season will be provided at least 72 hours prior to such action, unless such closure is ordered by the Louisiana Department of Health and Hospitals for public health concerns.

Shrimp Season in Portion of Louisiana Offshore Territorial Waters

Shrimp season opened in a portion of territorial waters between Caillou Boca and the Atchafalaya River Ship Channel, on Tuesday, April 16 at 6 a.m.

Details for the opening are as follows: The opening will be in the portion of state outside waters, south of the Inside/Outside Shrimp Line as described in LA R.S. 56:495 seaward a distance of three nautical miles, from the northwest shore of Caillou Boca at 90 degrees 50 minutes 27 seconds west longitude westward to the eastern shore of the Atchafalaya River Ship Channel at Eugene Island as delineated by the channel red buoy line, at 6 a.m. on Tuesday, April 16. This area lies seaward of Terrebonne parish.

According to the most recent trawl samples taken by LDWF biologists, small white shrimp have reached marketable sizes within these waters.

Because significant numbers of juvenile white shrimp remain in state outside waters seaward a distance of three nautical miles from the Atchafalaya River Ship Channel to the western shore of Freshwater Bayou Canal, this area will remain closed until further notice. With the exception of these waters, all remaining state outside waters will be open to shrimping.

The opening dates for the 2013 spring inshore shrimp season will be considered by the Louisiana Wildlife and Fisheries Commission at the May 2, meeting.

GULF OF MEXICO REGULATIONS

Louisiana and Texas Fisheries Agencies File Joint Lawsuit Challenging Red Snapper Emergency Rule

LDWF and its Commission, and the Texas Parks and Wildlife Department (TPWD) joined together to file a lawsuit in United States District Court in Brownsville, Texas, challenging an emergency regulation enacted by the federal National Marine Fisheries Service (NMFS) that, if left in place, would allow the NMFS regional administrator to significantly reduce the recreational red snapper season in federal waters off the coasts of Louisiana and Texas.

“The Louisiana Wildlife and Fisheries Commission, on behalf of recreational fishermen and those whose livelihood depends on reasonable access to red snapper stocks, has taken this action to send the message to NMFS that a nine-day season for Louisiana landings is totally unreasonable and unacceptable,” said Ronald “Ronny” Graham, LWFC chairman.

“While we would prefer a cooperative regional management approach and are still hopeful that we can reach such a resolution, TPWD has a responsibility to take legal action to protect our state’s authority to manage the red snapper fishery within Texas waters,” said T. Dan Friedkin of Houston, Texas Parks and Wildlife Commission chairman. “We have heard loudly and clearly from our anglers and other stakeholders that they expect nothing less from us.”

On Feb. 8, over the strong objections of state agency representatives from Louisiana, Texas and Florida, the Gulf of Mexico Fishery Management Council voted to implement an emergency rule that could shorten the recreational red snapper fishing season in federal waters off the Texas coast to as few as 12 days and to nine days off the Louisiana coast, down from a projected 22-day season. In 2012, the snapper season in federal waters throughout the Gulf was 46 days. In contrast, because snapper stocks are doing well and growing in the Gulf, snapper fishing is allowed 365 days a year in Texas state waters and 88 days in Louisiana state waters.

Just weeks later, on April 18, the Gulf council voted 8 to 7 to overturn the emergency rule, in effect reversing the Feb. 8 vote. Louisiana and Texas representatives said the lawsuit was an added measure of enforceability should NMFS not act on the latest council motion prior to the start of red snapper season June 1. The federal court has been asked to expedite its consideration of the case so that a decision is reached before June 1.

As published in the *Federal Register* on March 25, the emergency rule would authorize the National Marine Fisheries Service southeast regional administrator to reduce the red snapper season in

federal exclusive economic zone (EEZ) waters off Louisiana and Texas. The federal EEZ extends 200 miles from the coastline and has an inner boundary that is coterminous with each state's territorial boundary. Territorial waters off Texas extend nine miles from the state's coast. Louisiana's state territorial waters have traditionally been three miles, but in June 2012, the LWFC declared the gulfward boundary for Louisiana to be nine miles for the purposes of fisheries management, implementing the will of the Louisiana Legislature as expressed in Act 336 of 2011. The action taken by the LWFC to extend the state territorial boundary has not been recognized by Congress nor has it been adjudicated in court. The rule affects Florida as well, since all three states have refused to shorten snapper seasons in state waters to mirror seasons set by NMFS for federal waters.

"I am hopeful that NMFS will follow the Gulf council and overturn the emergency rule that arbitrarily reduces the red snapper season in Louisiana's territorial waters to no more than nine days," said Louisiana Attorney General Buddy Caldwell. "However, this lawsuit is a necessary step to protect the state's ability to set reasonable fishing regulations for in-state waters for the benefit of Louisiana's residents and anglers."

The joint lawsuit alleges that there is no emergency to justify such a rule. The two states also allege that the emergency rule violates the federal policy of cooperative federalism by improperly attempting to regulate the red snapper season in state waters.

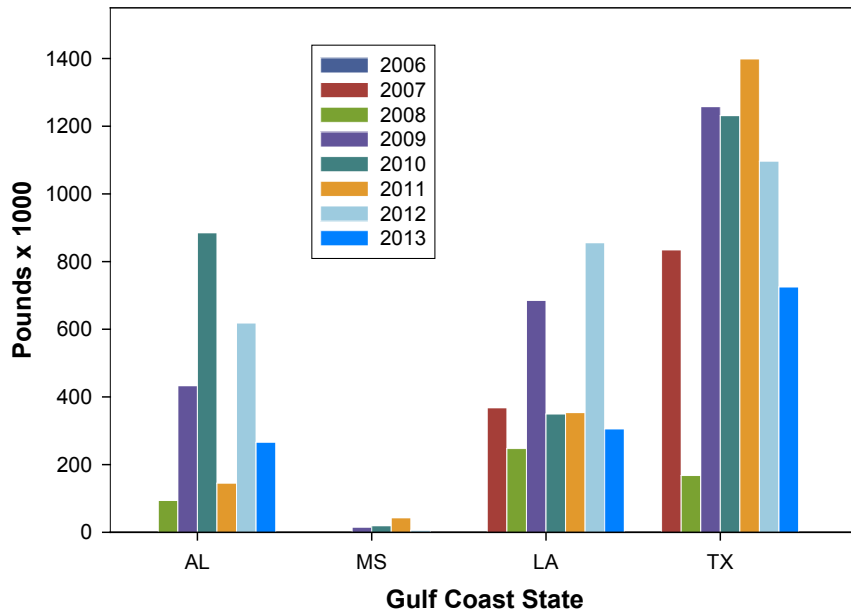
Although LDWF and TPWD are continuing to work with NMFS and the other Gulf states on a solution, the short deadline for challenging the emergency regulation required filing the lawsuit to preserve the states' ability to address the issue in a timely and effective manner.

The Louisiana and Texas agencies maintain that while a proposed shortened season will have no apparent conservation benefit, it would definitely have an economic impact. For Louisiana, reducing a 45-day season to a nine-day season could result in an estimated decline in economic value of approximately \$8 million to recreational anglers in that state. TPWD estimates that the originally projected 27-day season would generate at least \$28 million from recreational fishermen in Texas, while a 12-day season would cut that figure by at least \$16 million in lost retail sales in Texas.

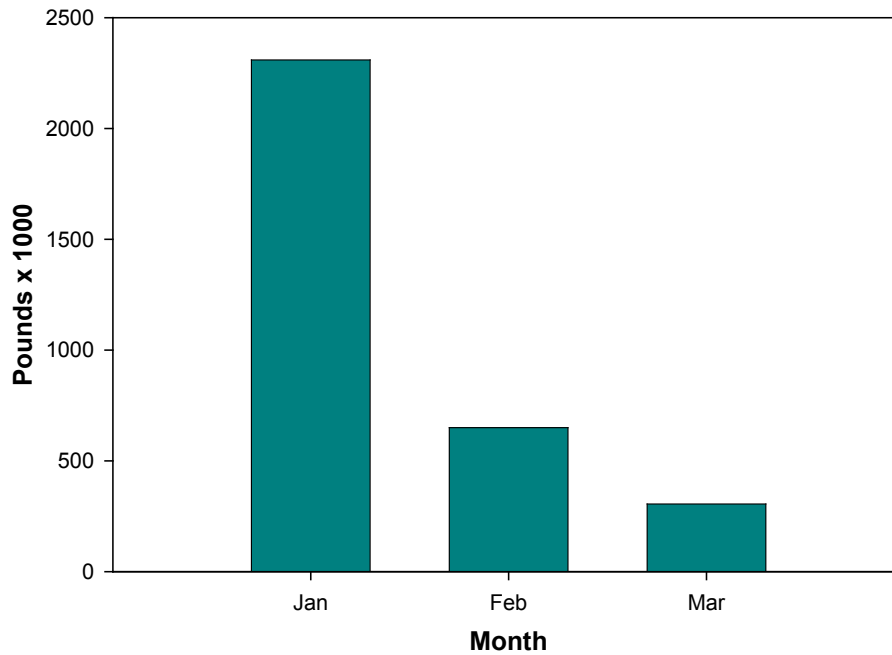
Louisiana Shrimp Watch

Louisiana specific data portrayed in the graphics are selected from preliminary data posted by NOAA on their website. All data portrayed are subject to final revision and approval by NOAA. Shrimp landings are ex-vessel prices, inclusive of all species harvested. Missing, inadequate or withheld reports are portrayed as "zero" in these graphics. Price graphics reflect central Gulf states only (Texas and Florida are reported independently). For more information, please refer to: www.st.nmfs.noaa.gov/st1/market_news/index.html.

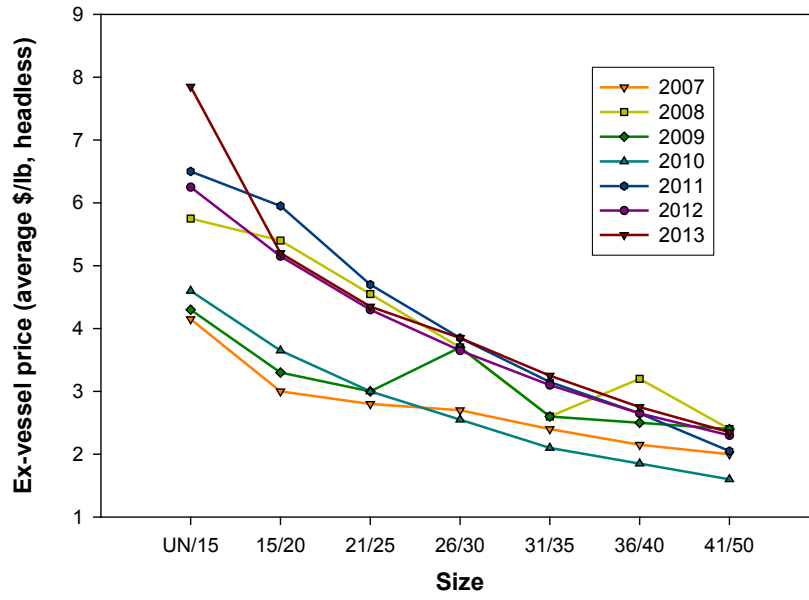
March 2013 Shrimp Harvest



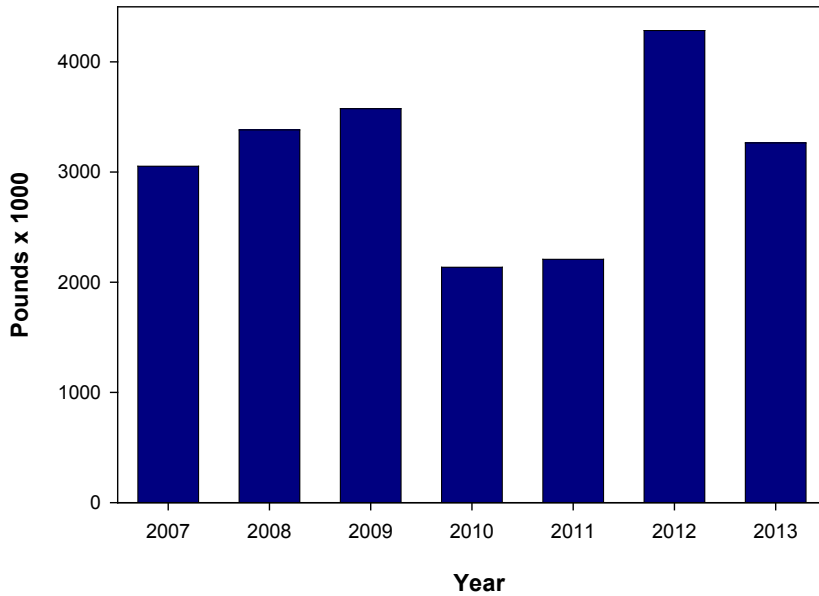
Louisiana 2013 Shrimp Harvest



March 2013 Northern GoM Shrimp Prices



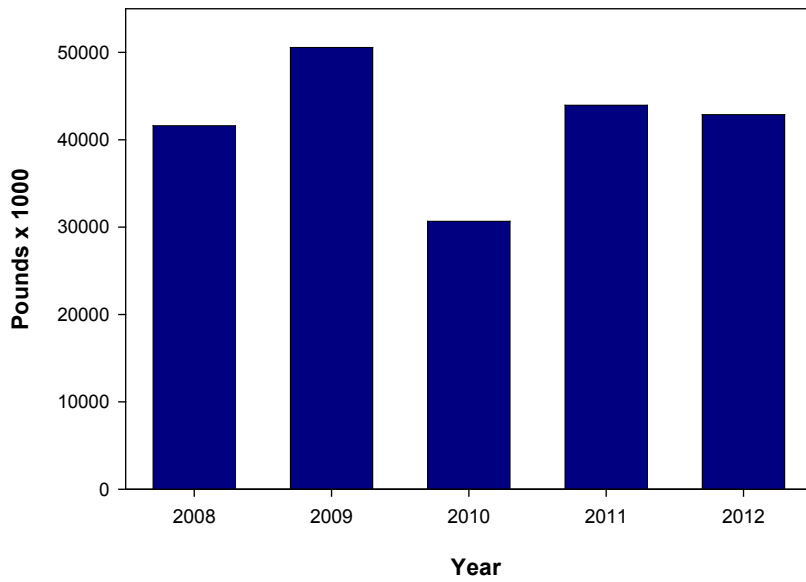
Louisiana Year to Date Shrimp Harvest



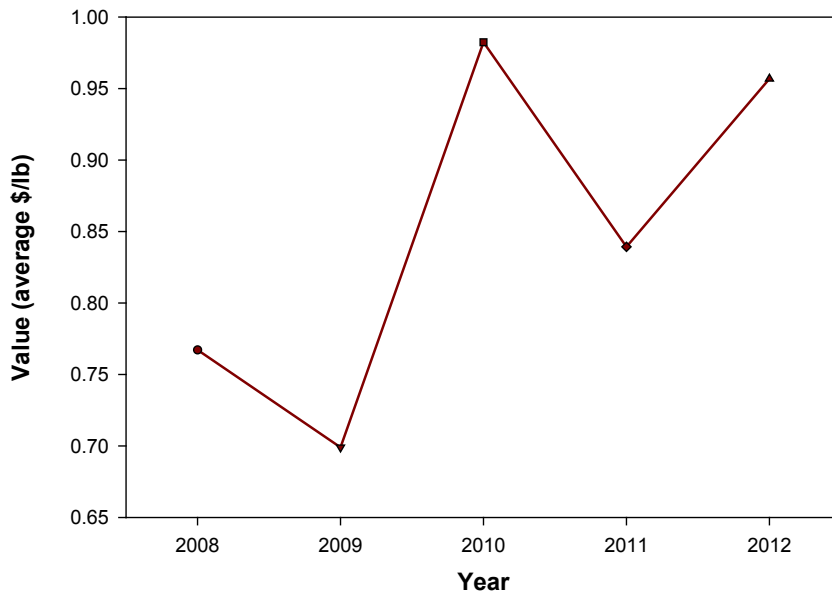
Louisiana Blue Crab Watch

In addition to the monthly shrimp data, we will begin sharing the Louisiana state data based on preliminary state landings data. All data portrayed are subject to final revision and approval.

Louisiana Blue Crab Harvest



Louisiana Blue Crab Value



The Gumbo Pot

Recipe courtesy of *Louisiana Kitchen & Culture*. For more recipes or to subscribe to their magazine or free newsletter, please visit <http://louisiana.kitchenandculture.com/>.

Shrimp Ravioli in Andouille Broth

Ingredients:

Broth

- 1/4 cup soy sauce
- 12 cups water
- 3 pounds andouille sausage, sliced 1/8" thick

Filling

- 1/2 pound shrimp, peeled and deveined
- 1/2 teaspoon ground white pepper
- 1 teaspoon fine sea salt
- 1 teaspoon chopped fresh ginger
- 1 teaspoon toasted sesame oil
- 1/4 cup loosely packed cilantro leaves, chopped
- 2 bunches green onions (about 14 stems) white and green parts, thinly sliced
- 1 (12-ounce) package wonton wrappers
- 1 pound shiitake mushrooms, stems removed and reserved for another use, caps sliced
- 2 carrots, peeled and julienned



Shrimp Ravioli in Andouille Broth. Photo courtesy of Louisiana Kitchen & Culture. Photo Credit: Ed Anderson

Method:

To make the broth, in a large saucepan, combine the soy sauce, water, and andouille. Bring to a boil over high heat. Once it comes to a boil, immediately decrease the heat to a slow simmer and simmer the broth for about 30 minutes.

Meanwhile, prepare the filling. Chop the shrimp finely and place in a small bowl. Add the white pepper, salt, ginger, sesame oil, cilantro, and half the green onions and mix all together until well combined. Using a tablespoon measure, scoop out sixteen equal portions of filling. Roll the filling between your palms to form marble-size balls and place them on a plate. Wet your palms with water periodically to keep the filling from sticking to your hands.

Remove the ravioli skins from the wrapper and place them on your work surface. Cover them with a slightly damp towel so they don't dry out. Have a small cup of cool water nearby to use to seal the ravioli.

To assemble the ravioli, place one wonton wrapper in the palm of your hand and place a ball of filling in the center. Dip one finger in the water and wet all edges of the wonton skin around the filling. Cover with a second wonton wrapper, cupping the ravioli in the palm of your hand, and pinch the edges of the ravioli closed with your thumb and index finger. Place the ravioli on another plate and continue until all the ravioli are assembled.

To cook the ravioli, return the andouille broth to a boil and then immediately drop the ravioli into the broth, one by one. Add the mushrooms and carrots and return the broth to a simmer. Cook for 3 minutes, stirring occasionally to keep the ravioli from sticking together.

To serve, divide the ravioli among four bowls and top with the broth, sliced andouille, and the vegetables. Garnish the dish with the remaining green onions.

If you have a favorite seafood recipe that you would like to share, please send it to Julie Anderson janderson@agcenter.lsu.edu for inclusion in future issues.



For more information, contact your local extension agent:



Thu Bui – Assistant Extension Agent, Fisheries
St. Mary, Iberia, and Vermilion Parishes
St. Mary Parish Court House
500 Main Street Rm. 314
Franklin, LA 70538-6199
Phone: (337) 828-4100, ext. 300
Fax: (337) 828-0616
tbui@agcenter.lsu.edu

Carol D. Franze – Associate Area Agent
Southeast Region
21549 Old Covington Hwy
Hammond, LA 70403
Phone: (985) 543-4129
cfranze@agcenter.lsu.edu

Albert 'Rusty' Gaudé – Area Agent, Fisheries
Jefferson, Orleans, St. Charles and St. John Parishes
Phone: (504) 433-3664
agaude@agctr.lsu.edu

Twyla Herrington – Associate Area Agent, Plaquemines Parish
479 F. Edward Hebert Blvd., Suite 201
Belle Chasse, LA 70037
Phone: (504) 433-3664
Fax: (504) 392-2448
therrington@agcenter.lsu.edu

Thomas Hymel – Watershed Educator
Iberia, St. Martin, Lafayette, Vermilion,
St. Landry, & Avoyelles Parishes
Phone: (337) 276-5527
thymel@agctr.lsu.edu

Alan Matherne – Area Agent (Fisheries & Coastal Issues)
Terrebonne, Lafourche, and Assumption Parishes
511 Roussell Street
Houma, LA 70360
Phone: (985) 873-6495
amatherne@agcenter.lsu.edu

Kevin Savoie – Area Agent (Southwest Region)
Natural Resources-Fisheries
Phone: (337) 475-8812
ksavoie@agctr.lsu.edu

Mark Shirley – Area Agent (Aquaculture & Coastal Resources)
Jefferson Davis, Vermilion, Acadia, St. Landry, Evangeline,
Cameron, Calcasieu, Lafayette, Beauregard, & Allen Parishes
Phone: (337) 898-4335
mshirley@agctr.lsu.edu

Research and Extension Programs
Agriculture
Economic/Community Development
Environment/Natural Resources
Families/Nutrition/Health
4-H Youth Programs

We would like to hear from you! Please contact us regarding fishery questions, comments or concerns you would like to see covered in the Lagniappe. Anyone interested in submitting information, such as articles, editorials or photographs pertaining to fishing or fisheries management is encouraged to do so.

Please contact Lagniappe editor Julie Anderson at janderson@agcenter.lsu.edu.

Julie A. Anderson
Assistant Professor
LSU Agcenter & Louisiana Sea Grant
114 RNR Building
Baton Rouge, LA 70803
Phone: 225-578-0771
Fax: 225-578-4227
janderson@agcenter.lsu.edu