

### **Twilley Named Louisiana Sea Grant Executive Director**

Dr. Robert Twilley is the Louisiana Sea Grant College Program's new executive director. He begins his duties in mid-August.

Twilley comes to Sea Grant from the University of Louisiana at Lafayette, where he served as vice president for research over the past two years. He previously served as associate vice chancellor for research and economic development at Louisiana State University, where he also held the rank of professor in the Department of Oceanography and Coastal Sciences.

"It's an honor to lead such a distinguished program," said Twilley. "Louisiana Sea Grant has accomplished some extraordinary things, from responding to coastal stakeholder needs following devastating hurricanes and the recent oil spill in the Gulf to sponsoring innovative research and nurturing new scholars across the state. This truly is an exciting opportunity for me to continue my passion to promote solutions to living along coastal Louisiana."

Twilley helped initiate a science program to support the Louisiana Coastal Area Program (LCA) that served to authorize the Water Resource Development Authorization (WRDA) to fund comprehensive coastal restoration projects, and he assisted with the development of both the state's 2007 Master Plan for Coastal Protection and Restoration and the Louisiana Speaks planning document following Hurricane Katrina. He also was instrumental in organizing the science and engineering board that oversaw the 2012 master plan update. While at LSU, Twilley was involved in developing interdisciplinary programs – such as the Coastal Sustainability Studio – that integrate physical and social sciences with engineering to solve the complex problems of rebuilding coastal Louisiana.

Twilley is Louisiana Sea Grant's third executive director during the program's 44-year history. He earned his bachelor's and master's degrees in biology from East Carolina University in Greenville, N.C., and his doctorate in plant ecology and systems ecology from the University of Florida. He completed his post doc in coastal oceanography at University of Maryland Center for Environmental Studies.



*A Joint publication of Louisiana Sea Grant and the LSU AgCenter*



## **LOUISIANA REGULATIONS**

### **Two New Data Collection Measures for the Recreational Harvest of Reef Fish**

Two notices of intent regarding the recreational harvest of reef fish including new reporting requirements and the utilization of a free, Offshore Recreational Landings Permit have been approved.

The two new measures are the Louisiana Department of Wildlife and Fisheries' (LDWF) first steps in a movement towards regional management. The department will use this information to collect essential angler and harvest data, which will in turn provide additional liberties and flexibility for recreational fishermen.

Current management of reef fish involves not only LDWF, but also the federal government. Management decisions are set for the entire Gulf of Mexico, rather than specific seasons and limits for each fishery at a regional or state level. These decisions are based upon limited data, often unavailable on a timely basis. The notices of intent passed today by the Louisiana Wildlife and Fisheries Commission will allow data to be readily available shortly after being collected.

The first notice of intent expands the use of the Offshore Recreational Landings Permit to include all species of amberjack, grouper, hind and snapper, with the exception of gray snapper. The Offshore Recreational Landings Permit was ratified by the commission earlier this year and was originally approved for tuna, billfish and swordfish. This free permit will soon be available to the public.

In a related action, the commission also approved a notice of intent that modifies current reef fish regulations. Regulations will now require reporting and validation for certain recreationally landed reef fish. Reef fish included in the expanded reporting requirements are: red snapper, greater amberjack, gag grouper, red grouper, black grouper, yellowfin grouper, yellowmouth grouper, scamp, rock hind and red hind. The reporting requirements for reef fish would be similar to those approved for yellowfin tuna earlier this year by the commission.

Future modifications to reef fish regulations would allow the LDWF secretary to close, open, reopen or reclose any reef fish season if state or federal landings allocations are met.

Public comments on both notices of intent will be accepted until Thursday, Oct. 4, 2012. Comments may be submitted to Jason Adriance, Office of Fisheries, LDWF, P.O. Box 98000, Baton Rouge, LA 70898-9000 or via email at [jadriance@wlf.la.gov](mailto:jadriance@wlf.la.gov).

### **Changes to Calcasieu Lake Oyster Harvester Permits**

Several rule changes concerning Calcasieu Lake Oyster Harvester Permits as required by Act 541 of the 2012 Louisiana Legislative Session have been approved.

The changes include the removal of the limitation on the number of permits the Louisiana Department of Wildlife Fisheries (LDWF) can issue at any one time. In addition, the qualifications for obtaining a permit are now the same for all permit applicants, which include holding current and valid commercial fisherman oyster harvester licenses.

The permit remains free of charge and is a requirement for anyone seeking to commercially harvest oysters in Calcasieu Lake. Permits will now be issued on a calendar year basis and will be valid for

one year. Initial application for a permit must be made at the LDWF point of sale windows in Baton Rouge.

Harvest vessels in Calcasieu Lake are required to have the permit onboard the vessel at all times while commercially harvesting oysters.

Public comments on the proposed rule will be accepted until Aug. 20, 2012. Comments may be submitted to Patrick Banks, Office of Fisheries, Louisiana Department of Wildlife and Fisheries, P.O. Box 98000, Baton Rouge, LA 70898-9000 or via email to [pbanks@wlf.la.gov](mailto:pbanks@wlf.la.gov).

### **Commercial Fishing for Large Coastal Sharks to Close in Louisiana Waters**

Commercial fishing for large coastal sharks will close in Louisiana waters on July 6 at 11:30 p.m. The decision was made by Louisiana Department of Wildlife and Fisheries Secretary Robert Barham under the authority given by the commission in a rule allowing the secretary to declare a closed season.

National Marine Fisheries Service will also close the federal waters of the Gulf of Mexico at this time. The reopening date in federal waters has not been set; therefore, the reopening date has yet to be determined for state waters.

During the closed season, all commercial harvest, possession, purchase, exchange, barter, trade, sale or attempt to purchase, exchange, barter, trade or sell large coastal sharks or their fins is prohibited.

The large coastal shark group is composed of the great hammerhead, scalloped hammerhead, smooth hammerhead, nurse shark, blacktip shark, bull shark, lemon shark, sandbar shark, silky shark, spinner shark and tiger shark.

There is no allowable harvest at any time for all prohibited species, which include Basking shark, white shark, bigeye sand tiger, sand tiger, whale shark, smalltooth sawfish, largetooth sawfish, Atlantic angel shark, Caribbean sharpnose shark, smalltail shark, bignose shark, Caribbean reef shark, dusky shark, Galapagos shark, narrowtooth shark, night shark, bigeye sixgill shark, bigeye thresher shark, longfin mako, sevengill shark and sixgill shark.

## **Lagniappe Fisheries Newsletter**

Editor: Julie Anderson

Web coordinator: Melissa Castleberry

Copy editor: Roy Kron

Layout/design: Jessica Schexnayder

## GULF OF MEXICO REGULATIONS

### Recreational Harvest of Greater Amberjack

The recreational harvest of greater amberjack reopens in the Gulf of Mexico federal waters Aug. 1, 2012.

The 30-inch fork length minimum size limit and one-fish bag limit remain the same. Captain and crew of for-hire vessels may not retain a bag limit.

### Proposed Rule Modifying the Gulf of Mexico Greater Amberjack Rebuilding Plan

NOAA Fisheries Service has published a proposed rule adjusting the sector specific annual catch limits and annual catch targets for the greater amberjack stock in the Gulf of Mexico. The rule also establishes a 2,000-pound commercial trip limit throughout the fishing year.

*Addressing Changes to Rebuilding Plan:* In 2008, NOAA Fisheries Service issued a final rule establishing commercial and recreational quotas, accountability measures, and a rebuilding plan for the greater amberjack stock. In response to the 2010 update stock assessment, the Gulf of Mexico Fishery Management Council recommended a new acceptable biological catch of 1,780,000 pounds, which is less than the current catch limit of 1,830,000 pounds. Adjustments to the rebuilding plan are needed because the current annual catch limit exceeds the new acceptable biological catch.

*Commercial Trip Limit:* The proposed rule would establish a commercial sector trip limit of 2,000 pounds throughout the fishing year. Implementing a trip limit is intended to extend the fishing season for the commercial sector.

*Annual Catch Targets (quotas):* The council established quotas for the commercial and recreational sectors. The commercial allocation is 27 percent and the recreational allocation is 73 percent of the catch limit. Until a future stock assessment is completed, or the catch limit is exceeded, the commercial quota would be 409,000 pounds, and the recreational quota would be 1,130,000 pounds.

*Request for Comments:* The proposed rule published in the *Federal Register* on July 19, 2012.

Written comments on this proposed rule must be received no later than Aug. 20, 2012, to be considered by NOAA Fisheries Service. All comments received by NOAA Fisheries Service will be addressed in the final rule. Electronic copies of the proposed rule may be obtained from the Federal e-Rulemaking Portal at [www.regulations.gov](http://www.regulations.gov), and the amendment is available at <http://sero.nmfs.noaa.gov/>.

*How to Submit Comments:* You may submit comments by either of the following methods. Comments received through other means may not be considered.

*Electronic Submissions:* Federal e-Rulemaking Portal: [www.regulations.gov](http://www.regulations.gov).

- Enter the following docket number into the “Search” box: NOAA-NMFS-2012-0107.
- Select the appropriate title, and click “Submit a Comment.” This will display the comment Web form.

- Attachments to electronic comments (up to 10 MB) will be accepted in Microsoft Word, Excel, WordPerfect, or Adobe PDF file formats only.

Mail:

Rich Malinowski

NOAA Fisheries Service, Southeast Regional Office

Sustainable Fisheries Division

263 13th Avenue South

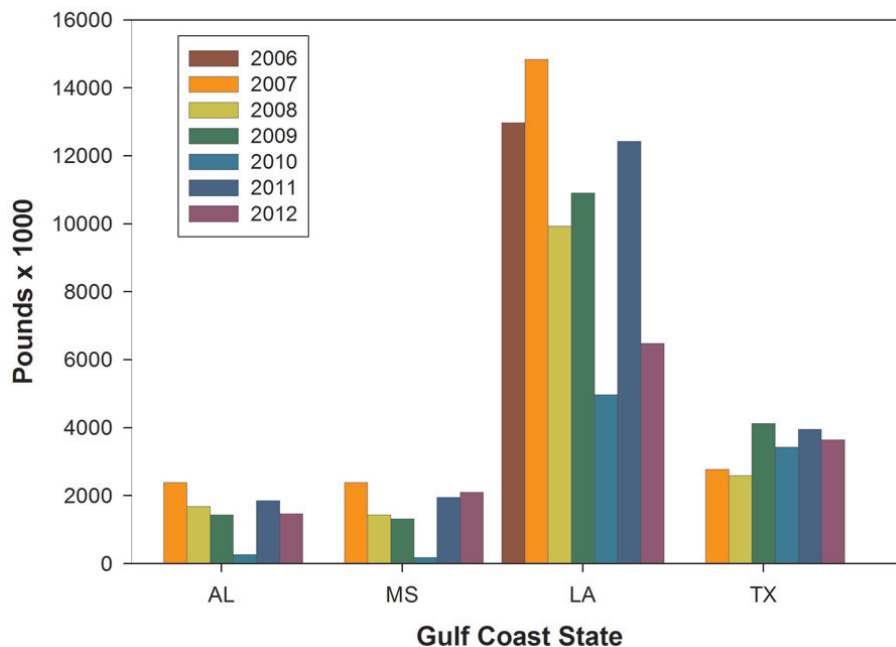
St. Petersburg, FL 33701-5505

All comments will be part of the public record, and generally posted for public viewing to <http://www.regulations.gov> without change. All personal identifying information (for example, name, address, etc.) voluntarily submitted by the commenter, may be publicly accessible. Do not submit confidential business information or otherwise sensitive or protected information. Anonymous comments will be accepted.

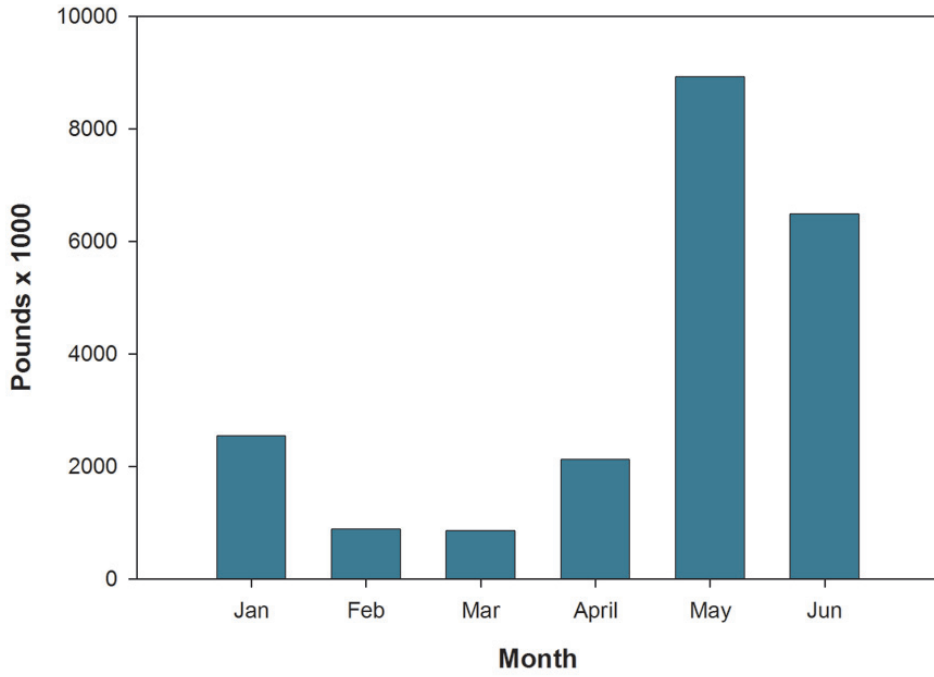
## Louisiana Shrimp Watch

Louisiana specific data portrayed in the graphics are selected from preliminary data posted by NOAA on their website. All data portrayed are subject to final revision and approval by NOAA. Shrimp landings are ex-vessel prices, inclusive of all species harvested. Missing, inadequate or withheld reports are portrayed as “zero” in these graphics. Price graphics reflect central Gulf states only (Texas and Florida are reported independently). For more information, please refer to: [www.st.nmfs.noaa.gov/st1/market\\_news/index.html](http://www.st.nmfs.noaa.gov/st1/market_news/index.html).

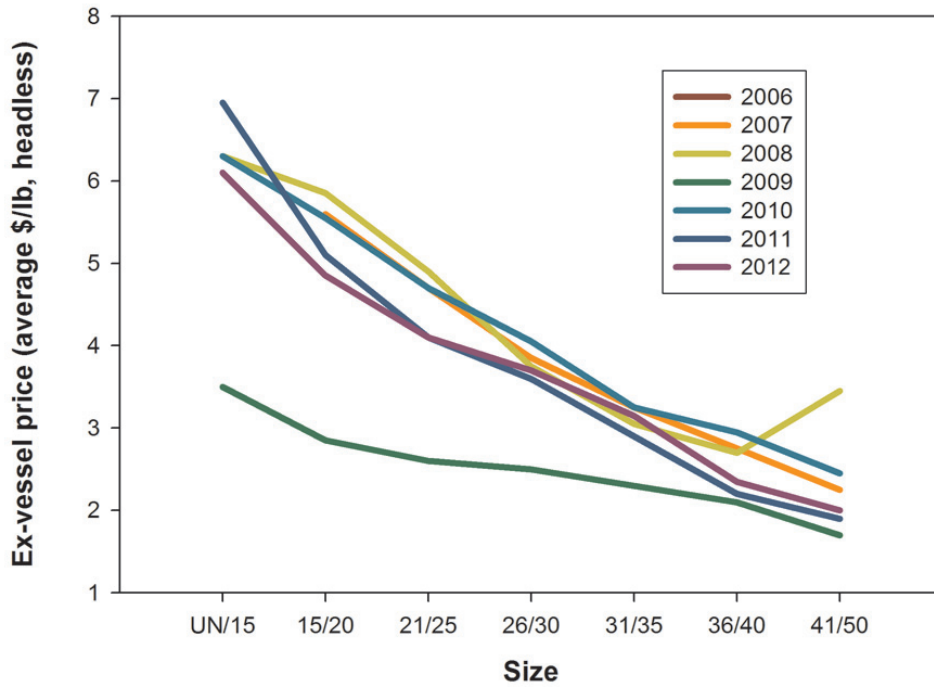
June Shrimp Harvest



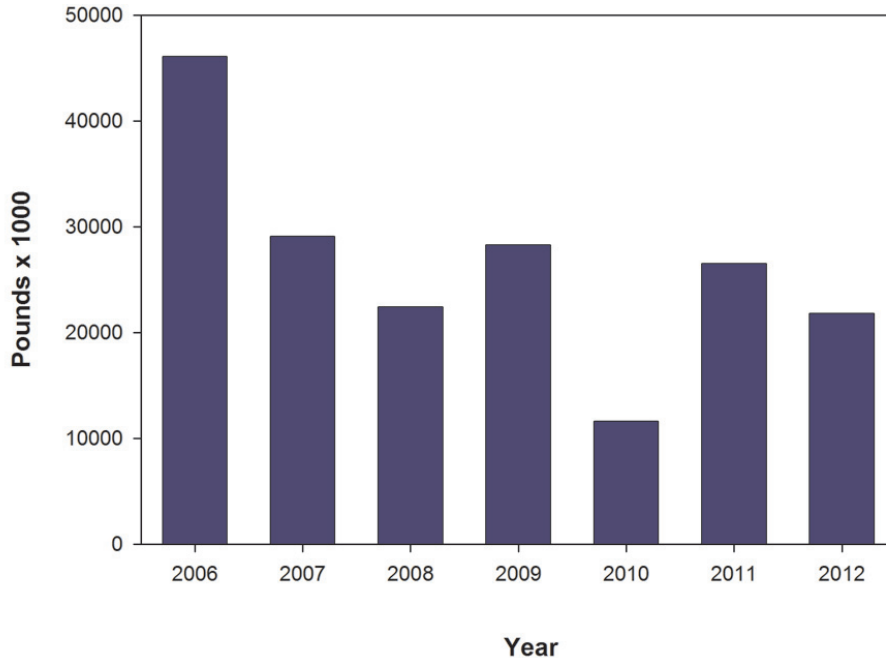
### Louisiana 2012 Shrimp Harvest



### June Northern GoM Shrimp Prices



Louisiana Year to Date Shrimp Harvest



## The Gumbo Pot

### Galatoire's Crabmeat Omelette

Recipe courtesy of Louisiana Kitchen and Galatoire's Cookbook by Jyl Benson and Melvin Rodrigue. For more recipes or to subscribe to their magazine or free newsletter, please visit <http://louisiana.kitchenandculture.com/>

#### Ingredients:

- 3 large eggs
- 1 tablespoon salted butter
- 2 tablespoons finely chopped scallions (white and green parts)
- 3 ounces jumbo lump crabmeat, cleaned
- salt and freshly ground black pepper

**Method:**

In a small bowl beat the eggs with a whisk until well blended and fluffy.

Melt the butter in an 8-inch non-stick pan over high heat. Saute' the scallions for 2 minutes until wilted. Add the crabmeat and saute' for an additional minute until the crabmeat is just heated through. Pour the eggs into the pan and stir with a rubber spatula until the eggs begin to firm up. Season with salt and pepper and allow the omelette to cook for about 1 minute without stirring until the bottom is golden brown and the top is almost set. Using a spatula, loosen the edges of the omelette then flip the omelette over and cook the top for a few seconds.

Slide the omelette onto a plate and fold it in half. Serve at once. Makes 1 large omelette that will serve 1 to 2.

If you have a favorite seafood recipe that you would like to share, please send it to Julie Anderson [janderson@agcenter.lsu.edu](mailto:janderson@agcenter.lsu.edu) for inclusion in future issues.



**Jumbo lump crabmeat. Photo credit: Louisiana Kitchen**





For more information, contact your local extension agent:



**Thu Bui** – Assistant Extension Agent, Fisheries  
St. Mary, Iberia, and Vermilion Parishes  
St. Mary Parish Court House  
500 Main Street Rm. 314  
Franklin, LA 70538-6199  
Phone: (337) 828-4100, ext. 300  
Fax: (337) 828-0616  
tbui@agcenter.lsu.edu

**Julie Falgout** – Extension Assistant  
204 Sea Grant Bldg.  
Louisiana State University  
Baton Rouge, LA 70803-7507  
Phone: (225) 578- 5932  
Fax: (225) 578-6331  
jfalgout@agcenter.lsu.edu

**Carol D. Franze** – Associate Area Agent  
Southeast Region  
21549 Old Covington Hwy  
Hammond, LA 70403  
Phone: (985) 543-4129  
cfranze@agcenter.lsu.edu

**Albert 'Rusty' Gaudé** – Area Agent, Fisheries  
Jefferson, Orleans, St. Charles and St. John Parishes  
Phone: (504) 433-3664  
agaude@agctr.lsu.edu

**Twyla Herrington** – Associate Area Agent, Plaquemines Parish  
479 F. Edward Hebert Blvd., Suite 201  
Belle Chasse, LA 70037  
Phone: (504) 433-3664  
Fax: (504) 392-2448  
therrington@agcenter.lsu.edu

**Thomas Hymel** – Watershed Educator  
Iberia, St. Martin, Lafayette, Vermilion,  
St. Landry, & Avoyelles Parishes  
Phone: (337) 276-5527  
thymel@agctr.lsu.edu

**Lucina Lampila** – Associate Professor  
111 Food Science Bldg.  
Louisiana State University  
Baton Rouge, LA 70803-7507  
Phone: (225) 578-5207  
Fax: (225) 578-5300  
llampila@agcenter.lsu.edu

**Alan Matherne** – Area Agent (Fisheries & Coastal Issues)  
Terrebonne, Lafourche, and Assumption Parishes  
511 Roussell Street  
Houma, LA 70360  
Phone: (985) 873-6495  
amatherne@agcenter.lsu.edu

**Kevin Savoie** – Area Agent (Southwest Region)  
Natural Resources-Fisheries  
Phone: (337) 475-8812  
ksavoie@agctr.lsu.edu

**Mark Shirley** – Area Agent (Aquaculture & Coastal Resources)  
Jefferson Davis, Vermilion, Acadia, St. Landry, Evangeline,  
Cameron, Calcasieu, Lafayette, Beauregard, & Allen Parishes  
Phone: (337) 898-4335  
mshirley@agctr.lsu.edu

**Research and Extension Programs**  
Agriculture  
Economic/Community Development  
Environment/Natural Resources  
Families/Nutrition/Health  
4-H Youth Programs

We would like to hear from you! Please contact us regarding fishery questions, comments or concerns you would like to see covered in the Lagniappe. Anyone interested in submitting information, such as articles, editorials or photographs pertaining to fishing or fisheries management is encouraged to do so.

**Please contact Lagniappe editor Julie Anderson at [janderson@agcenter.lsu.edu](mailto:janderson@agcenter.lsu.edu).**

**Julie A. Anderson**  
Assistant Professor  
LSU Agcenter & Louisiana Sea Grant  
114 RNR Building  
Baton Rouge, LA 70803  
Phone: 225-578-0771  
Fax: 225-578-4227  
janderson@agcenter.lsu.edu