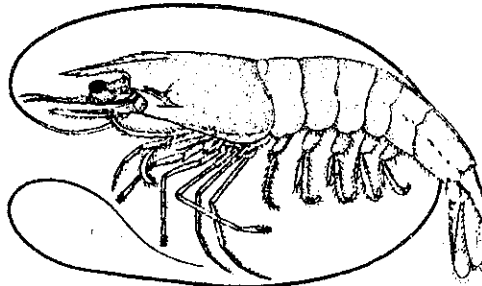


SEA GRANT PROGRAM



LAGNIAPPE

DISASTER LOAN INFORMATION

As many of you know, an Economic Injury Disaster Declaration has been issued because of the December 1989 freeze. Commercial fishermen, charter boat businesses, seafood dealers and other water related businesses are eligible to apply for a Small Business Administration low interest loan. Ray Chattham of SBA, has made several very important points that you should know before applying.

- 1) The SBA is a last resort lender. In other words, they can only lend you money if commercial banks have turned you down on mortgaging your property or if you have nothing to mortgage.
- 2) The SBA cannot lend you money directly to replace lost or damaged equipment. However, they can lend you money for working capital, if you had to spend your present working capital to replace or repair equipment.
- 3) The amount of loan money that you will be eligible to borrow will be based on how big your fishing business is. The size of your business will be determined by your previous income tax records.

Applications for these loans can be gotten by calling 1-800-527-7735. According to Mr. Chattham, SBA will be opening temporary local offices in coastal Louisiana to assist people with their loan applications. These applications will involve a great deal of work and many people who apply may not qualify.

MISCELLANEOUS GEAR LICENSES

Since the law passed two years ago to license all forms of commercial gear, the numbers of miscellaneous licenses has really grown. Many fishermen do not even know that some of the gear they are using must be licensed. The current miscellaneous commercial gear licenses are:

- *Frog gig
- *Eel pot
- *Minnow trap
- *Set line (trotlines, longlines and bushlines)
- *Dip net/cast net
- *Flounder gig
- *Can (pipes, buckets, tires and drums)

Dip nets used to dip shrimp from the tail of a trawl do not need to be licensed, as the trawl is already licensed.

These gear licenses cost \$25 each, for residents and \$100 for non-residents. The only gear which does not need a license is the human hand.

REEF FISH REGULATIONS

The regulations below are what will be going into effect on reef fish this year. The quota applies only to commercial catch and began January 1, 1990. The daily bag limits apply to all sportsmen and to commercial fishermen who don't have reef fish permits or those with trawls or entangling nets on board, and will go into effect on April 22. The size limits apply to everyone and will go into effect February 21.

SPECIES	SIZE LIMIT ^{1/} (inches)	DAILY BAG LIMIT (number)	QUOTA (pounds)
Snappers			
Red snapper	13	7	3.1 million
Vermilion snapper	8	None	None
Lane snapper	8	None	None
Gray snapper	12	10 fish in aggregate	None
Mutton snapper			
Yellowtail snapper			
Deep-Water Groupers			
Misty grouper	None	5 fish in aggregate	1.8 million
Snowy grouper			
Yellowedge grouper			
Warsaw grouper			
Shallow-Water Groupers			
Red grouper	20	5 fish in aggregate	9.2 million-- includes all groupers other than Deep-Water
Nassau grouper			
Yellowfin grouper			
Black grouper			
Gag grouper			
Other Groupers			
Jewfish ^{2/}	50		None
Other Reef Fish			
Black seabass	8	None	None
Greater amberjack	28	3	-
	(recreational)		
	36	-	None
	(commercial)		

^{1/}All measurements in total length except for greater amberjack where fork length is used.

^{2/}Jewfish are included in grouper bag limits, but not in quotas.

Source: News Bulletin. National Marine Fisheries Service 1/22/90

PERCH FOR BAIT

I have recently received several calls on the legality of using perch, or bream or bluegill, as they are also called, for bait on pole lines and trotlines. According to Major Tommy Candies, of the Department of Wildlife and Fisheries Enforcement Division, these fish are legal to use as bait, so long as they are caught legally. Since perch are gamefish, they must be caught with a hook and line by a person holding a sportfishing license. They cannot be caught legally with any sort of trap or net. They may not, however, be sold as bait, since it is illegal to sell gamefish taken from the wild.

COMMERCIAL FISHING SAFETY COURSE

Texas A & M Sea Grant has developed a two-day safety course for commercial fishermen. Personal injury lawsuits have become common in the fishing industry and insurance rates have rapidly increased. This program has been welcomed by insurance companies and from what I understand, one company has discussed the possibility of a 5% discount for people who take the course.

The course will be offered on March 26 and 27 from 9 am to 4 pm in Belle Chasse. The cost is \$25, which will cover cost of the training manual. Each person who completes the course will receive a certificate of completion and a captain's cap.

To register for the course, call 392-6690, extension 2233, in Belle Chasse and ask for Paul Thibodeaux.

SWORDFISH DEALER REPORTS

The National Marine Fisheries Service is proposing a requirement that each dealer in the Atlantic swordfish fishery would have to provide detailed monthly reports on all swordfish received and other fish landed from swordfish trips. The required information will include:

- *dates of receipt of swordfish
- *names and official numbers of vessels from which swordfish were received
- *dates and ports of landing of the vessels
- *total and individual carcass weights (by market category) of swordfish
- *total carcass weights by species for other fish taken on swordfish trips
- *prices paid for each market weight and species

Dealers would have the option of using special forms from the National Marine Fisheries Service or copies of appropriate weigh-out sheets and sales receipts.

Source: Federal Fisheries News Bulletin 1/5/90

E.P.I.R.B.s COMING

EPIRB stands for "emergency position indicator radio beacon." EPIRBs are designed to activate to send a radio signal when a vessel sinks. This not only notifies rescuers that a boat has sunk, but also locates its position.

Beginning May 17, 1990, all fishing vessels in offshore waters will be required to possess a 406 MHz EPIRB, except those which had a Class A EPIRB before October 3, 1988. These vessels will have to put a 406 EPIRB on by August 1, 1991.

HANG FUND OUT OF MONEY AGAIN

Gerald Theriot of the Fishermen's Gear Compensation Fund, has informed us that they are out of money and in the process of billing the oil and gas companies that have state mineral leases for more money. According to Mr. Theriot, the law requires the billing process to take 90 days. Money should be in the fund for the beginning of brown shrimp season. Claims received before then, are supposed to be approved for payment as soon as the monies come in. Fishermen wishing to make a claim, should call (504) 342-0122 in Baton Rouge.

EMERGENCY BLACK DRUM REGULATIONS

The emergency regulations on black drum, which the Wildlife and Fisheries Commission temporarily adopted in October, were extended until April 12 when final regulations should be ready. The temporary regulations include a minimum length of 14 inches for sportsmen and 18 inches and a 300,000 fish quota for commercial fishermen. If the quota is met before the final regulations are done, the Department has authorization to close the fishery.

THE GUMBO POT

Its recipe round-up time again. The old gumbo pot is close to being empty. If you have some favorite seafood recipes that you would like to share with our readers, please send them in to my office on Bonnie Ann Drive. We're looking forward to hearing from you.

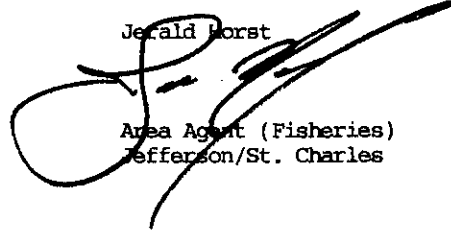
Bayou Bounty Seafood Casserole

This month's recipe comes from Angela West from West Feliciana Parish. I think that you'll really like it.

- | | |
|---|-------------------------------|
| 8 oz. reduced cal. cream cheese, softened | 1 lb. fresh white crab meat |
| 3/4 c. reduced cal. margarine | 1 1/2 c. cooked rice |
| 1 (10 oz.) can mushroom soup | 1 Tbsp. garlic salt |
| 2 large onion, chopped | 1 tsp. Tabasco sauce |
| 1 green bell pepper, chopped | 1/2 tsp. red pepper |
| 2 stalks celery, chopped | 1 c. cheddar cheese, shredded |
| 8 oz. mushrooms, sliced | Ritz crackers, crushed |
| 1 lb. shrimp, peeled & deveined | |

Preheat oven to 350 degrees. Melt cream cheese and 1/2 cup margarine together in large saucepan. Add soup and cook on low heat until smooth. Saute onions, green pepper, celery and mushrooms in remaining 1/4 cup margarine in skillet. Add shrimp. Saute until shrimp turn pink. Add crab meat, rice and seasonings; mix well. Spoon into a shallow 3-quart casserole dish. Top with cheddar cheese and cracker crumbs. Bake for 30 minutes. Serves 8.

Jerald Horst



Area Agent (Fisheries)
Jefferson/St. Charles

JH/kwj



LOUISIANA COOPERATIVE EXTENSION SERVICE PROVIDES EQUAL OPPORTUNITIES IN PROGRAMS AND EMPLOYMENT. LOUISIANA STATE UNIVERSITY AND A. & M. COLLEGE, LOUISIANA PARISH GOVERNING BODIES, SOUTHERN UNIVERSITY, AND UNITED STATES DEPARTMENT OF AGRICULTURE COOPERATING

A State Partner in the Cooperative Extension System

LOUISIANA COOPERATIVE EXTENSION SERVICE
LSU AGRICULTURAL CENTER
U.S. DEPARTMENT OF AGRICULTURE
LOUISIANA STATE UNIVERSITY AND A. & M. COLLEGE
UNIVERSITY STATION, BATON ROUGE, LA 70803-1900

OFFICIAL BUSINESS

Penalty for Private Use, \$300