
Art for Play: A collaboration between the LSU Community Playground Project and artist Bill Hemmerling

The objective of the LSU Community Playground Project is to provide safe, fun, and accessible playgrounds for every child in Baton Rouge and surrounding area public school systems to promote education, physical fitness, and whole child development.

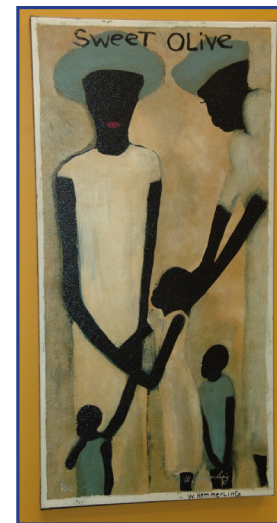


Play is one of the central aspects of appropriate childhood development and is widely recognized by experts as a critical component of every child's "work." Playgrounds provide tremendous enrichment to children's lives; their design involves activities to develop motor skills, hand-eye coordination and physical fitness while also providing spaces for reflection, growth, and quiet conversation, games for social development, and places for cooperative learning.

Our playground program involves pairing elementary school and college students together to design "dream playgrounds" created by the elementary school students. College students take these dream playground concepts, as well as input from teachers, parents, and community members, to design safe, fun, accessible playgrounds at the schools. These designs are presented to the children, who make final recommendations on the designs. After fundraising and grant writing is complete, the design (checked by a certified safety playground inspector) is built at the school by volunteers to promote learning and community spirit, and to minimize construction costs.



We are honored to work together to raise funds for children's playgrounds and to raise community awareness of the importance of art in children and adult lives. Limited, special edition, signed giclees are available for \$500. Each giclee is stretched on museum quality canvas and is printed with archival inks that will last a lifetime. Proceeds from the sale of these giclees will fund a new pre-K and Kindergarten playground at University Terrace Elementary School.



This special edition giclee measures 16" x 32" and is signed and numbered by Bill Hemmerling.

For more information on the LSU Community Playground Project or on purchasing giclees, please contact Marybeth Lima at mlima1@lsu.edu or at 225.284.8858.

For more information about the artist: go to www.billhemmerling.com
