



# LSU CYBERSECURITY CLINIC

Inaugural Cybersecurity Seminar Series  
for Small Businesses  
February 2024

# About the Clinic...

First NSA-funded  
cybersecurity  
clinic

Experiential cyber  
education for LSU  
students

Enhance  
cybersecurity  
practices for small  
businesses in LA

Pro-bono services



Training

Counseling

Assessment

PRESENTED BY LCC CYBER DEFENSE TEAM

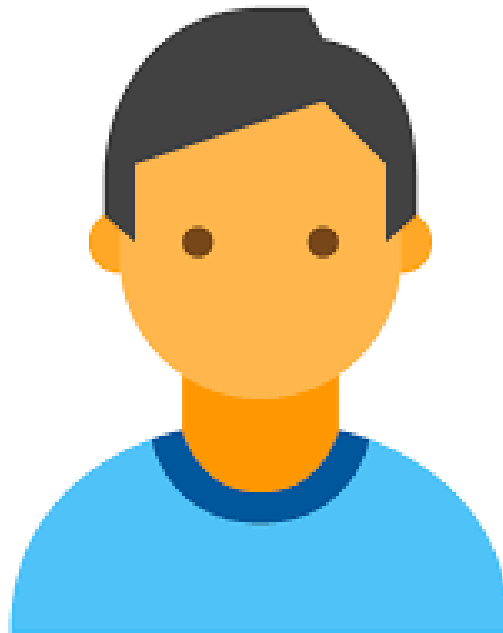
# KEEPING YOUR PASSWORD SAFE

## THE IMPORTANCE OF PASSWORD MANAGEMENT



[WWW.LSU.EDU/CYBERCLINIC](http://WWW.LSU.EDU/CYBERCLINIC)

# THIS IS STAMPY



**\$43 BILLION IN DAMAGES**

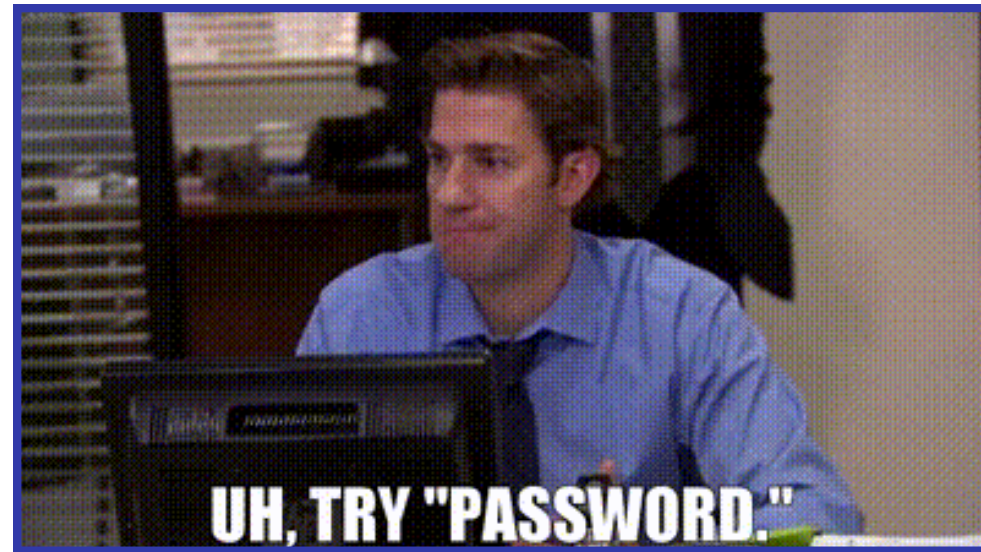
**VIA: IC3**

**921 PASSWORD ATTACKS  
PER SECOND**

**VIA: MICROSOFT**

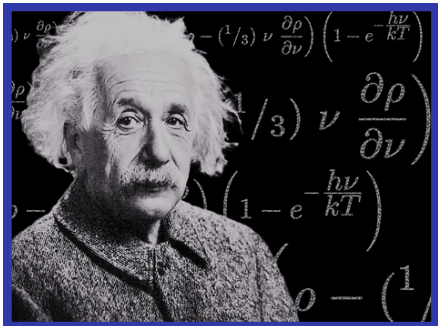
# ABOUT AUTHENTICATION

- Authentication aims to verify the identity of an individual or org.
- Passwords are, by far, the most common authentication medium.
- Know the password? Get the goods!
- You generally pick your own passwords.
- Are you using good passwords?



# PILLARS OF A GOOD PASSWORD

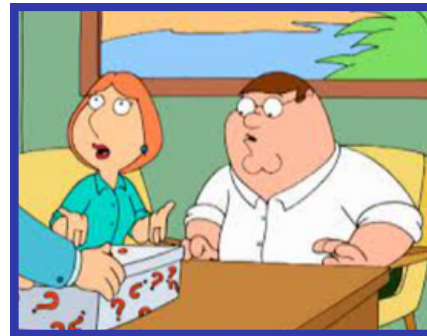
COMPLEXITY



LENGTH



UNPREDICTABILITY



EASY TO REMEMBER



**6HA^ZABLI2E@2HPB**



**ILOVEMYJOB504#**

# TIME IT TAKES A HACKER TO BRUTE FORCE YOUR PASSWORD

Number of Characters	Numbers Only	Lowercase Letters	Upper and Lowercase Letters	Numbers, Upper and Lowercase Letters	Numbers, Upper and Lowercase Letters, Symbols
4	Instantly	Instantly	Instantly	Instantly	Instantly
5	Instantly	Instantly	Instantly	Instantly	Instantly
6	Instantly	Instantly	Instantly	1 sec	5 secs
7	Instantly	Instantly	25 secs	1 min	6 mins
8	Instantly	5 secs	22 mins	1 hour	8 hours
9	Instantly	2 mins	19 hours	3 days	3 weeks
10	Instantly	58 mins	1 month	7 months	5 years
11	2 secs	1 day	5 years	41 years	400 years
12	25 secs	3 weeks	300 years	2k years	34k years
13	4 mins	1 year	16k years	100k years	2m years
14	41 mins	51 years	800k years	9m years	200m years
15	6 hours	1k years	43m years	600m years	15 bn years
16	2 days	34k years	2bn years	37bn years	1tn years
17	4 weeks	800k years	100bn years	2tn years	93tn years
18	9 months	23m years	6tn years	100 tn years	7qd years

## PASSWORD POLICIES: KEEPING PASSWORDS GREAT

- People want to use passwords that are easy to remember.
- But is it secure enough?
- You can help!
- A password policy is set by an organization to ensure good passwords are being used.

# WHAT IS HASHING?

## WHY DO WE NEED IT?

- This slide is in plaintext.
- If you understand it, congrats!  
You can read!
- ...but so can everyone else.
- Your passwords are no different.
- The solution? Hashing!



# DEMO

## PASSWORD CRACKING

# WHY DO WE NEED ACCESS CONTROL?

- Ensure everyone has exactly what they need
- Prevent unauthorized access
- Reduces effect of password leaks



# PASSWORD SHARING

- While well intentioned, password sharing is not advisable
- 20% of adults have shared their email password with someone else
- Extends your ability to be attacked



# PASSWORD REUSE

- Reuse means that a single leak is catastrophic
- 60% of Americans use the same password for multiple accounts
- How do we deal with so many passwords?



# PASSWORD MANAGERS TO THE RESCUE

- A central location to store passwords
- Only need to remember one password
- Interfaces with computer and phone





# MULTI-FACTOR AUTHENTICATION

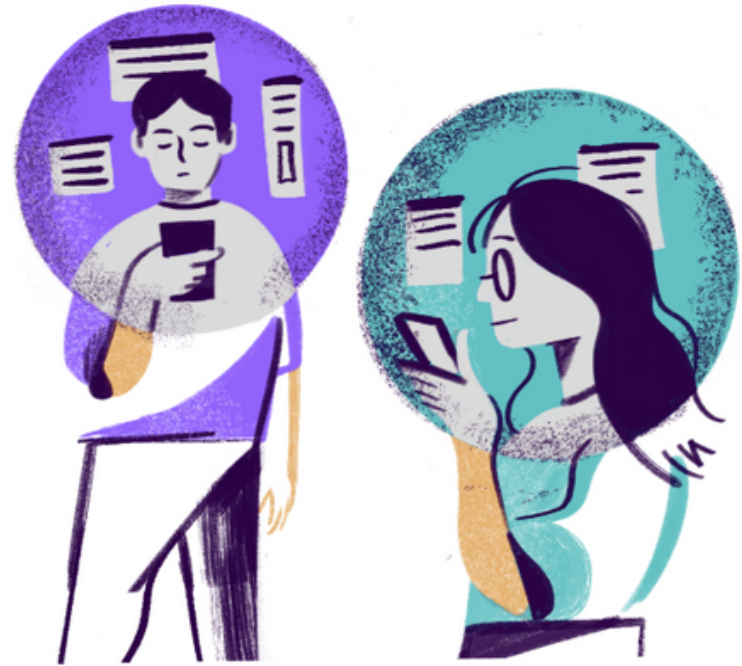
- Used alongside passwords
- Reduces effects of password leaks
- Minimal effort for major benefit
- Comes in various different forms



PRESENTED BY LCC CYBER DEFENSE TEAM

**THANK YOU VERY  
MUCH!**

**ANY QUESTIONS?**



[WWW.LSU.EDU/CYBERCLINIC](http://WWW.LSU.EDU/CYBERCLINIC)