

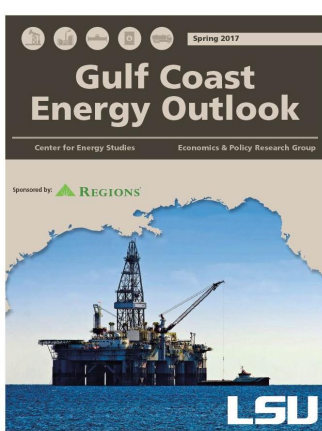
Energy Summit™ Set for Oct. 18

The Center for Energy Studies will host its annual Energy Summit™ on Wednesday, October 18, 2017, at the Dalton J. Woods Auditorium in the LSU Energy, Coast & Environment Building. The theme for this year's event is "Operating in a New Energy World."

This year, CES is pleased to feature guest speaker, [John Wasik](#), award-winning journalist and author of *Lightning Strikes: Timeless Lessons in Creativity from the Life and Work of Nikola Tesla*. Presented by Campanile Charities, Wasik will discuss how Tesla's visionary works continue to have global influence in energy development.

[Read more.](#)





LSU Researchers Release Inaugural *Gulf Coast Energy Outlook*

Researchers from the E. J. Ourso College of Business and the Center for Energy Studies have released the inaugural [Gulf Coast Energy Outlook](#). The publication provides a broad overview of the current status and trends guiding energy markets with an emphasis on the Gulf Coast. The *Outlook* seeks to become an annual report.

Authors are Christopher K. Coombs, energy adviser, LSU Economics & Policy Research Group; David E. Dismukes, executive director and professor, LSU Center for Energy Studies; Dek Terrell, director and professor, LSU Economics & Policy Research Group; and Gregory B. Upton, Jr., assistant professor, LSU Center for Energy Studies.

The collaborative research initiative focuses on upstream oil and gas production and downstream refining and petrochemicals, as well as the contribution of the energy sector to the broader Gulf Coast economy. The report includes forecasts of future employment in relevant energy sectors.

[Read more.](#)



Scholarship recipients (l-r): Lorence, Chenevert, Guillory and Lee

CES Scholarships Awarded for 2017-18

The Center for Energy Studies congratulates its scholarship recipients for the 2017-18 academic year. The Center's scholarships are awarded to high-performing students majoring in energy-related fields.

LMOGA/Brooksher Scholarship: Shreveport native **John Lorence**, a senior majoring in petroleum engineering.

F. Malcolm Hood Scholarship: **Andrew Chenevert**, a senior majoring in accounting, from Baton Rouge.

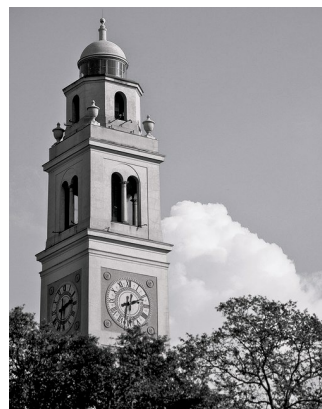
David Olver Memorial Scholarship: **Sean Guillory**, a senior majoring in chemical engineering, from Lafayette.

GCPA emPOWERing Women Scholarship: **Breanna Lee**, a junior from Baton Rouge majoring in electrical engineering.

Campanile Charities, Inc., Awards Center for Energy Studies \$15K

The Center will receive two grants totaling \$15,000 from Campanile Charities, Inc., or CCI, in support of its annual energy conference, Energy Summit™. The awards are part of the Campanile Charities' grant program for 2016-17 comprising several grants of up to \$20,000 each for selected LSU academic units and research programs associated with the energy industry.

"We are thrilled with the awards from Campanile Charities and want to express our sincere appreciation for their support of our fall conference," said David Dismukes, CES professor and executive director.



In addition to funding this year's Energy Summit™ guest speaker, John Wasik, the grants will be used to provide students the opportunity to attend the event free of charge.

"Our goal is always to involve students in our public events to provide educational and networking opportunities," Dismukes said. "This grant will allow us to award several students a competitive scholarship to attend at no charge."

Energy Summit™ 2017 is scheduled for Wednesday, October 18. The conference addresses the current state of, and outlook for, the energy industry, particularly as it pertains to the Gulf Coast region. Participants and attendees represent the upstream oil and gas industry, pipeline companies, storage and mid-stream companies, petrochemical companies, gas and power utilities, state environmental and utility regulators, state agency heads and staff members, legislators and legislative staff, and the media.

Campanile Charities, Inc., is a public charity based in Baton Rouge. Through an endowment set up at the LSU Foundation, CCI funds several professorships and programs at the University.

Upton Contributes to June 9 LPB Program

On June 9, Greg Upton, CES assistant professor, appeared on a segment of Louisiana Public Broadcasting's *Louisiana: The State We're In*, discussing oil and gas prices and their impacts on the state's economy. Upton comments on the 30 percent drop in oil and gas industry jobs between 2014 and 2016, the effects of the severance tax rate and differences between the 1980's oil and gas crisis and the recent downturn.



See "Oil and Gas Sector" (min. 15) [here](#).

CES Hosts Energy Bar Association NOLA Chapter Annual Meeting

On May 10, the Center hosted the annual meeting of the Energy Bar Association, New Orleans Chapter. The full-day CLE event drew more than 50 attendees and featured La. Public Service Commissioner Eric Skrmetta as keynote speaker.



Energy leaders in the law, government and industry from Washington, D.C., Louisiana, and elsewhere met to discuss regulatory and jurisdictional issues impacting Louisiana energy professionals. Topics included energy infrastructure hardening and storm preparation and response; an overview of the Federal Energy Regulatory Commission, its organization and structure; and current issues in carbon capture, utilization, and sequestration (CCUS). The event included a chapter business meeting and networking reception.

CES Executive Director David Dismukes participated on the CCUS panel. His presentation, "Integrated carbon capture, utilization and storage in the Louisiana chemical corridor," is available [online](#).



Clockwise: LPSC Commissioner Erik Skrmetta; EBA networking lunch; CCUS panel; EBA NOLA Chapter President Dan Pancamo conducting business meeting.

Faculty Invited to Speak at Several Events

This spring, CES Executive Director David Dismukes and Assistant Professor Greg Upton spoke at several events on a variety of energy topics, including the *Gulf Coast Energy Outlook* and integrated carbon capture, utilization and storage.

Venues included the Baton Rouge Rotary Club Luncheon, Kinetica Shipper Meeting in Lake Charles, and the NETL CarbonSAFE Kick-Off meeting in Pittsburgh.

View or download recent presentations [here](#).



Hewitt Gives Local HERWorld Energy Forum Address

La. State Sen. Sharon Hewitt provided the opening address to local attendees of the [HERWorld Energy Forum](#) presented by Pink Petro on March 8. CES served as a local co-host. Assistant Professor Mallory Vachon coordinated the event.

Hewitt shared stories of challenges and opportunities from her career as an engineer for Shell working offshore. At the height of her career with Shell, Hewitt oversaw a large portion of the company's deepwater operations, managed a quarter of a billion-dollar budget and was in charge of 160 employees.



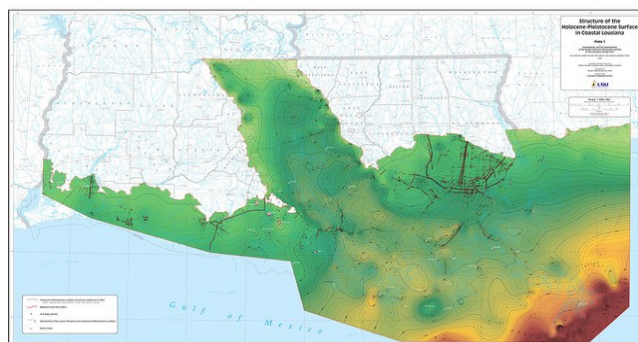
The HERWorld Energy Forum is an innovative one-day learning event hosted by participating universities, companies and facilities via web streaming technology. This year's event was held on International Women's Day and addressed "new frontiers in the energy industry where business, workforce, innovation and policy intersect."

Upcoming

Announcing

La. Coastal Geology Framework Symposium

a wide-ranging discussion of coastal Louisiana's geological framework, featuring some new interpretations



Wednesday

26 July 2017

Dalton J. Woods Auditorium

LSU Energy, Coast & Environment Bldg.

Presented by the [Louisiana Geological Survey](#)

Scheduled speakers: Nancye Dawers, Jeff Hanor, John Johnston III, Rick McCulloh, Elizabeth McDade, Chris McLindon

Scientific co-sponsors:

New Orleans Geological Society

Baton Rouge Geological Society

Lafayette Geological Society

Society of Exploration Geophysicists

Society of Economic Paleontologists & Mineralogists

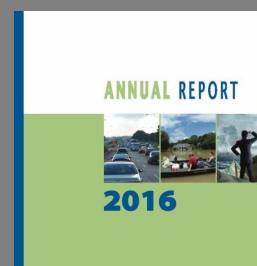
LSU Center for Energy Studies

For more information or to submit abstracts, please contact **John Johnston III** at hammer@lsu.edu


CES Annual Report 2016 Available Online

The CES *Annual Report* provides a review of the Center's and its affiliates' research, education and outreach for the calendar year.

View or download [here](#).



Questions or comments?
Contact us at ces@lsu.edu

 Like us on Facebook

Follow us on [twitter](#)

