

CAMD Cleanroom Login System

User's Guide

Introduction

The CAMD Cleanroom Login System is a new computer application which controls the usage of specific pieces of equipment used in the cleanroom. This application keeps a record of which piece of equipment is being used at any given time, by whom, and the duration it was used. These records will be used to create statistics on the usage of our equipment and for billing purposes.

How to use the system

Getting started

Once you are logged onto the computer under the local account “public,” you should see a window open that looks like Figure 1. If you do not see this window, then double click on the shortcut on the desktop labeled CR Login.

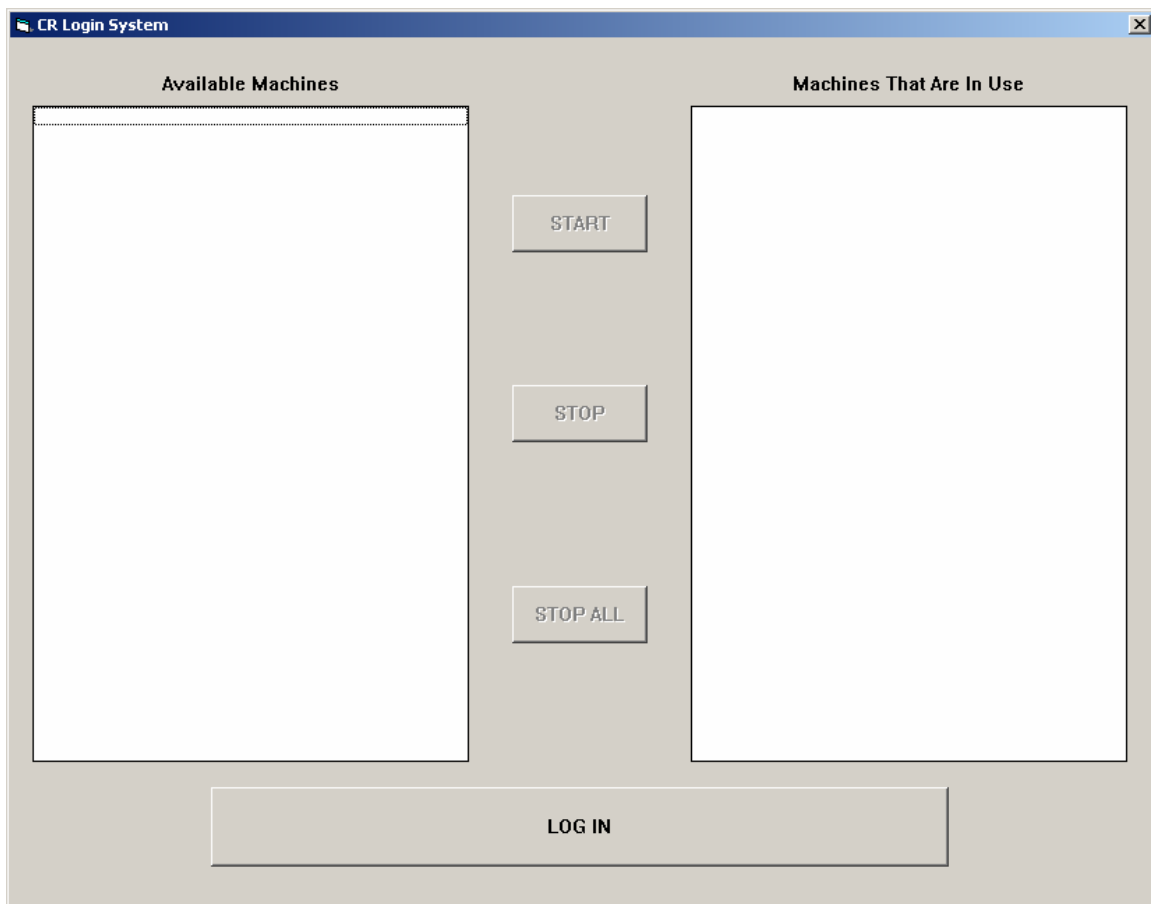


Figure 1 The CR Login System starting point

Logging in

To login to the CR Login System, the user must click the button labeled **LOG IN**. This button is located at the bottom of the CR Login System application as illustrated in Figure 1. Once you have clicked the **LOG IN** button, you should now see a screen that looks like Figure 2. The user's UserID and Password is identical to his/her booking UserID and Password. Enter your UserID into the field labeled **UserID** and enter your password in the field labeled **Password** and click on the **OK** button.

NOTE: UserID is not case sensitive, but your Password is case sensitive.

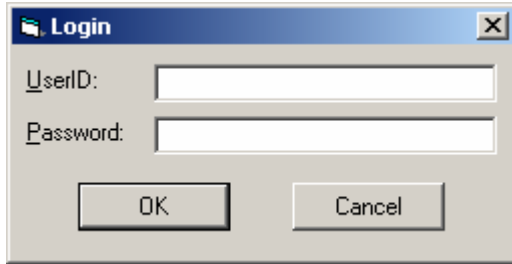


Figure 2 User Login Screen

Once successfully logged in, the CR Login System should look something like Figure 3. The field labeled **Available Machines** contains a list of equipment that the user may use. The field labeled **Machines That Are In Use** contains a list of equipment that the user has already turned on. The **LOG IN** button changes to **Log Out**.

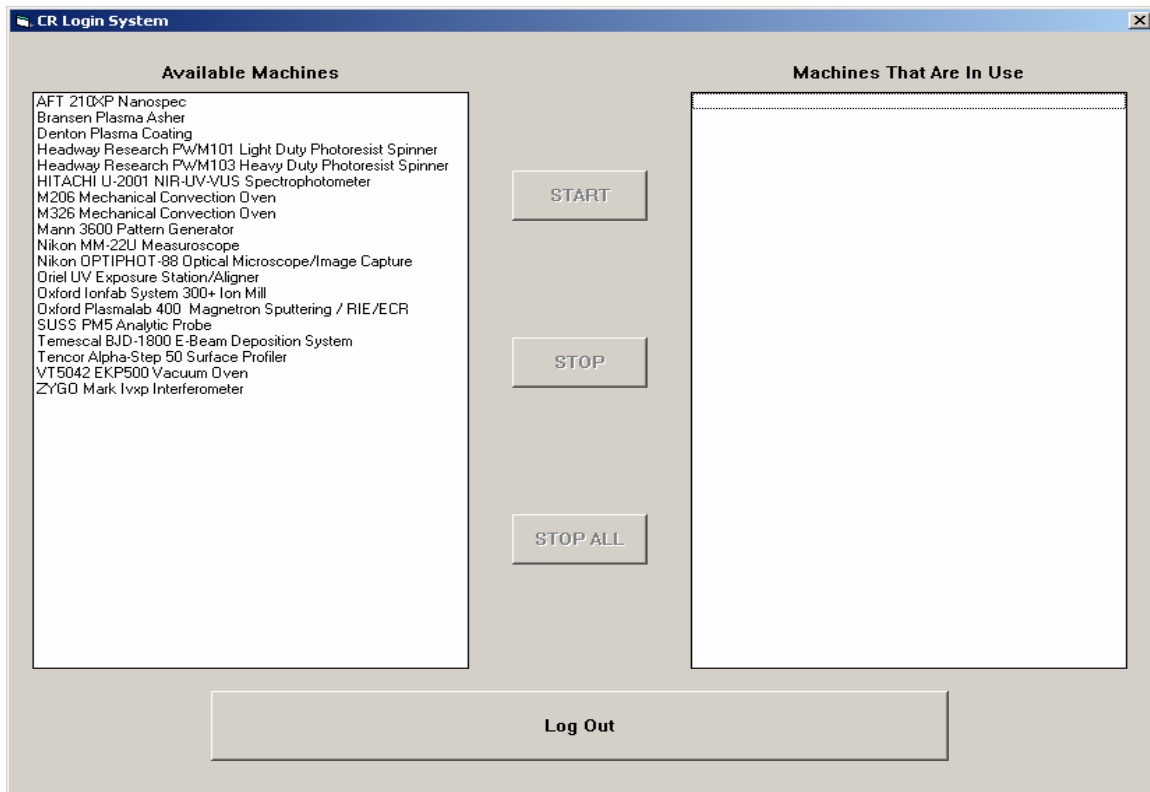


Figure 3 CR Login System after logging in.

NOTE: The **START**, **STOP**, and **STOP ALL** buttons will be disabled at first.

Activating a piece of equipment

Highlight one machine to be activated. The **START** button will become enabled once a machine is selected as illustrated in Figure 4. After selecting the desired piece of equipment from the **Available Machines** field, the user must click the **START** button to activate the desired machine. Immediately after clicking the **START** button, the mouse pointer will change from the default arrow to an hour glass. The mouse pointer will remain an hour glass while the requested transaction is performed. The mouse pointer will change back to the default arrow after about two seconds. The user should wait until the mouse pointer changes back to the default arrow before requesting another transaction. Once the mouse pointer has changed back to the arrow, the user should see something like Figure 5. If the user wishes to use multiple pieces of equipment then he/she needs to repeat the above step until all of the desired pieces of equipment are activated. After activating all desired machines, the user should log out as described below.

NOTE: Once there is at least one item in the **Machines That Are In Use** field, the **STOP ALL** button will become enabled. If you click the **STOP ALL** button then all of the pieces of equipment listed in the **Machines That Are In Use** will be deactivated.

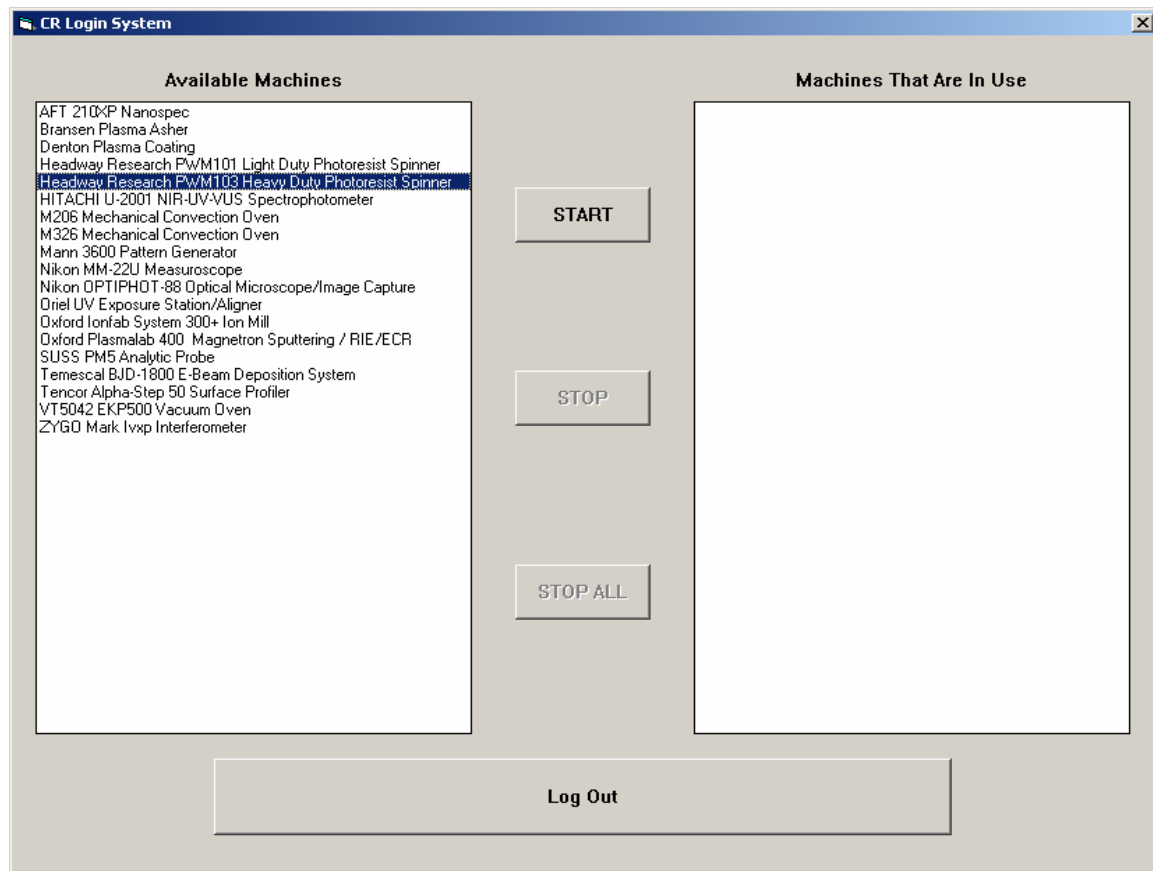


Figure 4 CR Login System with one piece of equipment selected from the Available Machines field.

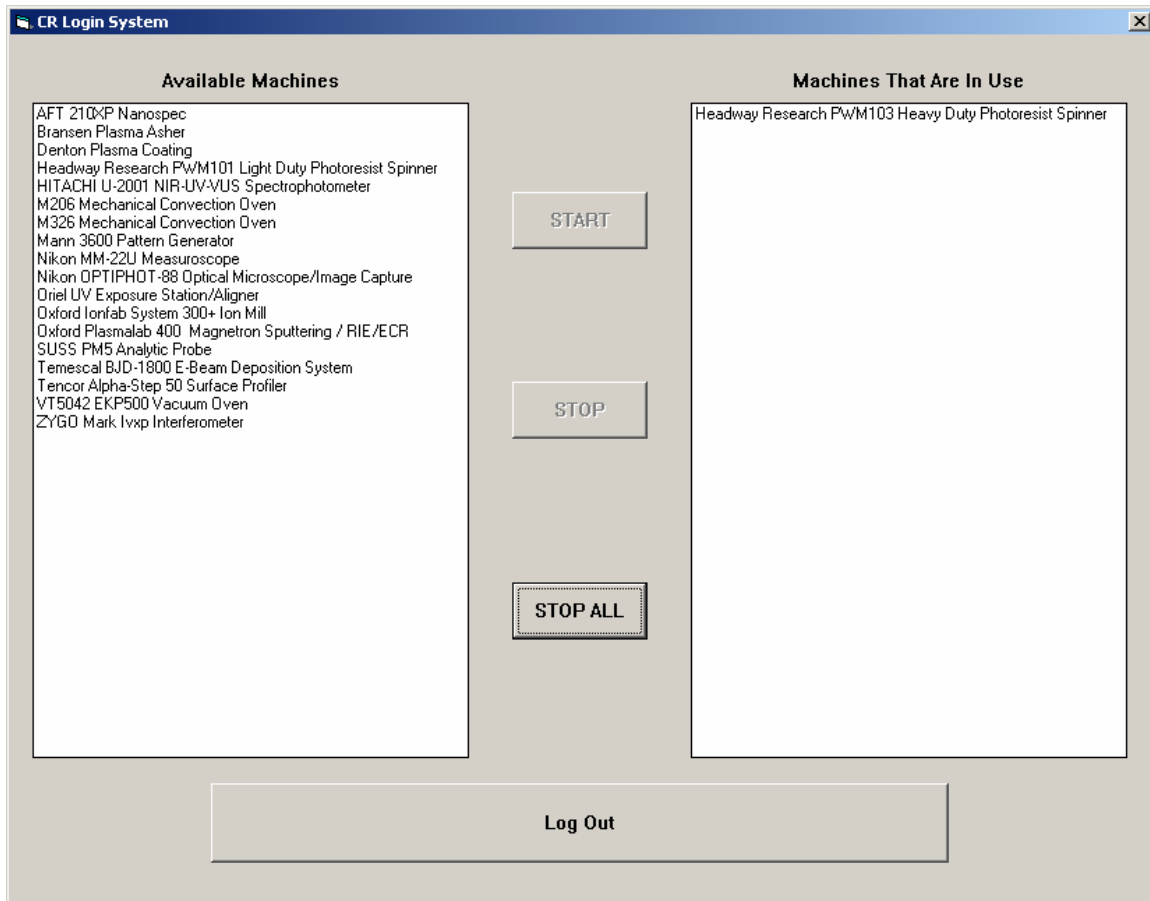


Figure 5 CR Login System with one piece of equipment started.

Logging Out

Once the user has completed all the transactions that he/she wishes to make, then the user needs to log out by clicking on the **Log Out** button located at the bottom of the CR Login System application as illustrated in Figure 5. Once successfully logged out, the CR Cleanroom System will look like Figure 1. Please, leave the CR Login System and computer in this state for the next user.

Deactivating a piece of equipment

Login to the CR Cleanroom System as described above. Next, the user needs to select the desired piece of equipment from the **Machines That Are In Use** field that he/she wants to turn off. Once the user has selected the machine he/she should have a screen that looks like Figure 6. Now click the **STOP** button to stop the selected piece of equipment. Immediately after clicking the **STOP** button, the mouse pointer will change from the default arrow to an hour glass. The mouse pointer will remain an hour glass while the requested transaction is performed. The mouse pointer will change back to the default arrow after about two seconds. The user should wait until the mouse pointer changes back to the default arrow before requesting another transaction. If the user wishes to stop multiple machines, but not all, then repeat the above steps until all desired machines are deactivated. Furthermore, if the user wishes to deactivate all the equipment

that is listed in the **Machine That Are In Use** field then click the **STOP ALL** button. After deactivating all desired machines, the user should log out as described above.

NOTE: The **STOP** button becomes enabled when a piece of equipment is selected.

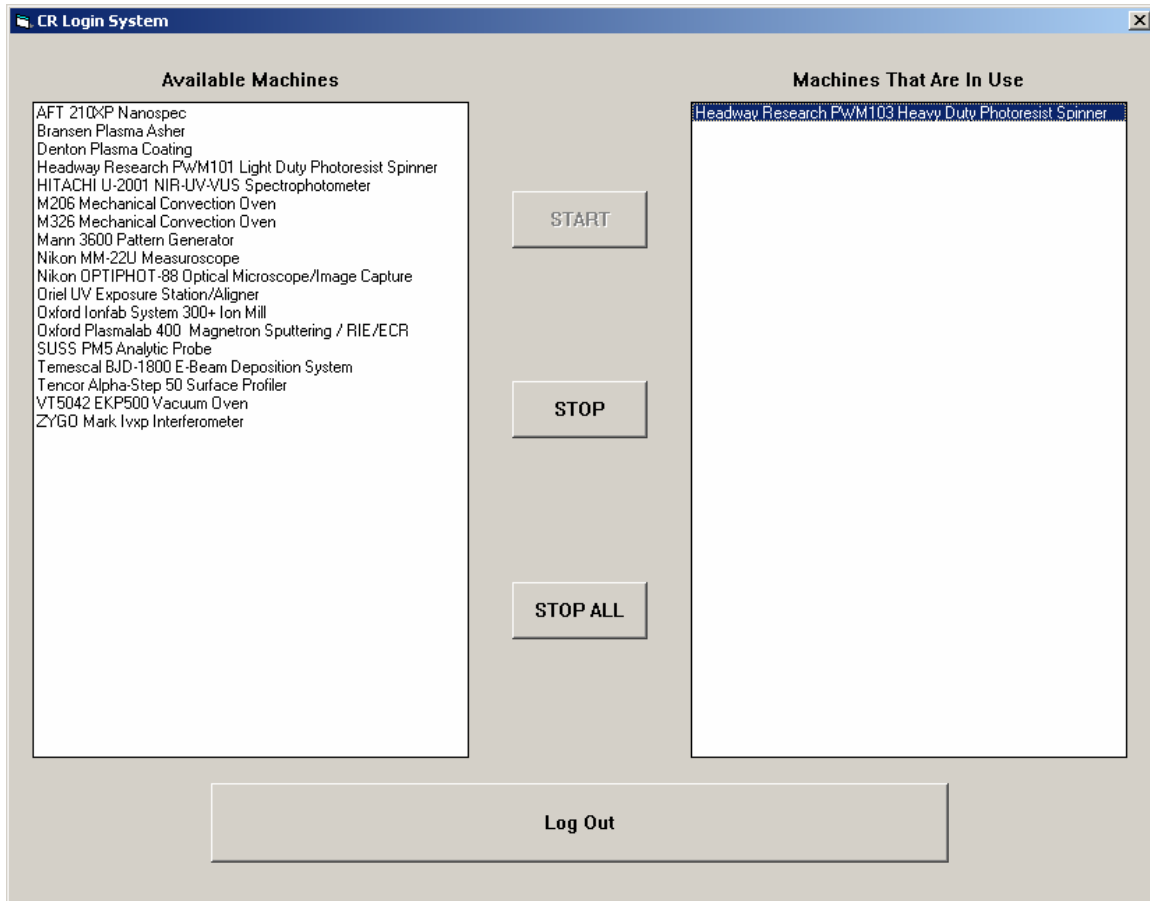


Figure 6 Cr Login System with one piece of equipment in the **Machines That Are In Use** field selected.