

LSU
Deposit and Collateral Report
For the Quarter Ended March 31, 2018

Deposits Requiring Posting of Collateral:	Demand Deposit Sweep/MMA Repurchase	Certificates of Deposit	Total Deposits in Financial Institutions	Collateral (1)
LSU A&M, LSU Alexandria, LSU Eunice, LSU Shreveport, and Health Sciences Ctr New Orleans				
Chase - LSU, Health Plan Premium	\$ 73,288,644		\$ 73,288,644	\$ 125,000,000
Cottonport Bank-LSU Ag Center	\$ 500,000		\$ 500,000	\$ 250,000
Capital One - LSU-A	2,292,603		2,292,603	2,292,603
St. Landry Bank - LSU-E	431,164		431,164	1,491,218
Campus Federal Credit Union - LSU-S		\$ 100,237	100,237	250,000
Capital One (Hibernia National Bank) - LSU-S	50,815,539		50,815,539	51,398,024
Chase-HSCNO	12,275,640	18,600	12,294,240	25,900,000
Total	\$ 139,603,590	\$ 118,837	\$ 139,722,427	\$ 206,581,845
LSU Health Shreveport				
US Bank	\$ 4,388		\$ 4,388	\$ 250,000
Regions Bank-Shreveport	67,708,171		67,708,171	77,955,366
Regions Bank-Shreveport Endowment Fds	8,723,520		8,723,520	-
Total	\$ 76,436,079	\$ -	\$ 76,436,079	\$ 78,205,366
LSU HCSD				
JP Morgan Chase (HCSD)	\$ 78,090,222		\$ 78,090,222	\$ 82,291,229
Capital One (MCLNO Trust Fund)	4,183,308		4,183,308	4,261,795
Total	\$ 82,273,530	\$ -	\$ 82,273,530	\$ 86,553,024
Total Requiring Collateral	\$ 298,313,199	\$ 118,837	\$ 298,432,036	\$ 371,340,235
Deposits In Trust or Federal Obligations Not Requiring Collateral				
Federated Money Markets	\$ 17,472,657		\$ 17,472,657	
Federated Funds-Treas. Oblig. (2)	733		733	
Total	\$ 17,473,390	\$ -	\$ 17,473,390	
Total Deposits	\$ 315,786,589	\$ 118,837	\$ 315,905,426	

- (1) Collateral amounts include FDIC coverage of \$250,000 on Demand Deposits, \$250,000 on CD's and \$250,000 by the National Credit Union Share Insurance Fund on deposits with Campus Federal Credit Union.
- (2) One Group & Federated Funds are no-load, open ended mutual funds investing in U.S. Treasury obligations.

LSU
Investment Summary
For the Quarter Ended March 31, 2018

Fund Description	As of 7/1/2017		As of 9/30/2017		As of 12/31/2017		As of 3/31/2018		As of 06/30/2018	
	Value	Cost	Market Value	Cost	Market Value	Cost	Market Value	Cost	Market Value	
Current Funds										
Cash/Sweeps	\$231,313,374	\$254,409,898	\$254,409,898	\$278,676,667	\$278,676,667	\$285,406,371	\$285,406,371	\$0	\$0	
Money Market Accounts/Repos (A)	\$142	\$7,174,020	\$7,174,020	\$6,263,816	\$6,263,816	\$2,582,395	\$2,582,395	\$0	\$0	
Certificates of Deposit	\$100,225	\$100,225	\$100,225	\$100,237	\$100,237	\$100,237	\$100,237	\$0	\$0	
Treasury Notes	\$12,613,599	\$12,516,556	\$12,609,115	\$7,715,942	\$7,730,758	\$6,466,011	\$6,439,380	\$0	\$0	
CMO's	\$169,881	\$2,327,632	\$2,307,161	\$6,543,452	\$6,468,000	\$6,496,647	\$6,284,588	\$0	\$0	
Agency Securities (B)	\$129,722,977	\$167,108,996	\$164,147,973	\$136,941,637	\$134,126,769	\$129,778,067	\$125,181,973	\$0	\$0	
Mortgaged Backed Securities	\$29,240,979	\$27,863,351	\$27,424,685	\$23,788,080	\$23,315,681	\$22,559,039	\$21,936,771	\$0	\$0	
Equity Securities (C)	\$84,239	\$0	\$79,661	\$0	\$77,533	\$0	\$70,258	\$0	\$0	
Bond Mutual Funds	\$43,841,262	\$46,697,531	\$43,899,237	\$46,697,531	\$44,092,490	\$46,697,531	\$43,694,390	\$0	\$0	
Municipal Bonds (E)	\$89,828,023	\$101,113,010	\$98,236,250	\$95,071,730	\$91,696,849	\$98,612,502	\$94,124,565	\$0	\$0	
Corporate Bonds (D)	\$141,247,762	\$188,925,256	\$188,635,119	\$151,118,157	\$149,311,900	\$156,522,401	\$150,932,391	\$0	\$0	
Total	\$678,162,463	\$808,236,475	\$799,023,344	\$752,917,249	\$741,860,700	\$755,221,201	\$736,753,319	\$0	\$0	
Endowment Funds										
Cash/Sweeps	\$6,883,023	\$6,880,687	\$6,880,687	\$8,429,003	\$8,429,003	\$8,723,520	\$8,723,520	\$0	\$0	
Money Market Accounts/Repos (A)	\$175	\$3,659,076	\$3,659,076	\$668,995	\$668,995	\$407,302	\$407,302	\$0	\$0	
Certificates of Deposit	\$18,600	\$18,600	\$18,600	\$18,600	\$18,600	\$18,600	\$18,600	\$0	\$0	
Agency Securities (B)	\$5,930,359	\$4,168,505	\$3,971,834	\$3,029,175	\$2,951,815	\$2,509,075	\$2,394,365	\$0	\$0	
Mortgaged Backed Securities	\$998,929	\$780,920	\$769,452	\$2,830,592	\$2,791,199	\$2,645,919	\$2,575,098	\$0	\$0	
Equity Securities (C)	\$9,769,145	\$5,666,168	\$10,104,449	\$5,666,168	\$10,612,278	\$5,666,168	\$10,482,271	\$0	\$0	
Mutual Funds	\$53,956,268	\$53,219,566	\$58,023,842	\$51,735,473	\$56,868,935	\$50,673,529	\$54,708,246	\$0	\$0	
Municipal Bonds (E)	2,287,741	2,789,725	\$2,777,143	\$3,275,153	\$3,241,436	\$3,254,999	\$3,178,023	\$0	\$0	
Corporate Bonds (D)	6,736,080	\$6,852,795	\$6,707,128	\$8,120,150	\$8,153,865	\$9,329,143	\$9,123,910	\$0	\$0	
Total	\$86,580,320	\$84,036,042	\$92,912,211	\$83,773,309	\$93,736,126	\$83,228,255	\$91,611,335	\$0	\$0	
Other Funds										
Cash/Sweeps	\$5,165,268	\$3,684,891	\$3,684,891	\$4,029,716	\$4,029,716	\$4,183,308	\$4,183,308	\$0	\$0	
Money Market Accounts/Repos (A)	\$43,905,798	\$18,450,982	\$18,450,982	\$23,432,725	\$23,432,725	\$14,482,960	\$14,482,960	\$0	\$0	
Agency Securities (B)	\$866,895	\$839,273	\$865,976	\$839,273	\$858,985	\$839,273	\$844,469	\$0	\$0	
Equity Securities (C)	\$400,421	\$0	\$406,621	\$0	\$414,854	\$0	\$370,066	\$0	\$0	
US Gov Related Securities	\$6,404	\$2,697	\$2,697	\$1,769	\$1,769	\$733	\$733	\$0	\$0	
Total	\$50,344,786	\$22,977,843	\$23,411,167	\$28,303,483	\$28,738,049	\$19,506,274	\$19,881,536	\$0	\$0	
Grand Total	\$815,087,569	\$915,250,360	\$915,346,722	\$864,994,041	\$864,334,875	\$857,955,730	\$848,246,190	\$0	\$0	
Deposits in Financial Institutions										
Total Cash/Sweeps/MMA/Repos	\$287,267,780	\$294,259,554	\$294,259,554	\$321,500,922	\$321,500,922	\$315,785,858	\$315,785,856	\$0	\$0	
Total Certificates of Deposit	\$118,825	\$118,825	\$118,825	\$118,837	\$118,837	\$118,837	\$118,837	\$0	\$0	
US Gov Related Securities	\$6,404	\$2,697	\$2,697	\$1,769	\$1,769	\$733	\$733	\$0	\$0	
Total Deposits	\$287,393,009	\$294,381,076	\$294,381,076	\$321,621,528	\$321,621,528	\$315,905,428	\$315,905,426	\$0	\$0	
Other Investments										
Treasury Notes	\$12,613,599	\$12,516,556	\$12,609,115	\$7,715,942	\$7,730,758	\$6,466,011	\$6,439,380	\$0	\$0	
CMO's	\$169,881	\$2,327,632	\$2,307,161	\$6,543,452	\$6,468,000	\$6,496,647	\$6,284,588	\$0	\$0	
Agency Securities (B)	\$136,520,231	\$172,116,774	\$168,985,783	\$140,810,085	\$137,937,569	\$133,126,415	\$128,420,807	\$0	\$0	
Mortgaged Backed Securities	\$30,239,908	\$28,644,271	\$28,194,137	\$26,618,672	\$26,106,880	\$25,204,958	\$24,511,869	\$0	\$0	
Equity Securities (C)	\$10,253,805	\$5,666,168	\$10,590,731	\$5,666,168	\$11,104,665	\$5,666,168	\$10,922,595	\$0	\$0	
Bond Mutual Funds	\$43,841,262	\$46,697,531	\$43,899,237	\$46,697,531	\$44,092,490	\$46,697,531	\$43,694,390	\$0	\$0	
Mutual Funds	\$53,956,268	\$53,219,566	\$58,023,842	\$146,807,203	\$148,565,784	\$149,286,031	\$148,832,811	\$0	\$0	
Municipal Bonds (E)	\$92,115,764	\$103,902,735	\$101,013,393	\$98,346,883	\$94,938,285	\$101,867,501	\$97,302,588	\$0	\$0	
Corporate Bonds (D)	\$147,983,842	\$195,778,051	\$195,342,247	\$159,238,307	\$157,465,765	\$165,851,544	\$160,056,301	\$0	\$0	
Total Other	\$527,694,560	\$620,869,284	\$620,965,646	\$638,444,243	\$634,410,196	\$640,662,806	\$626,465,329	\$0	\$0	
Grand Total	\$815,087,569	\$915,250,360	\$915,346,722	\$960,065,771	\$956,031,724	\$956,568,234	\$942,370,755	\$0	\$0	
LSU Paid Campuses										
Current Funds										
Cash/Sweeps	\$101,409,479	\$129,882,723	\$129,882,723	\$130,979,944	\$130,979,944	\$139,603,590	\$139,603,590	\$0	\$0	
Money Market Accounts/Repos (A)	\$24	\$7,174,014	\$7,174,014	\$6,263,799	\$6,263,799	\$2,582,330	\$2,582,330	\$0	\$0	
Certificates of Deposit	\$100,225	\$100,225	\$100,225	\$100,237	\$100,237	\$100,237	\$100,237	\$0	\$0	
Treasury Notes	\$11,614,639	\$11,516,556	\$11,609,785	\$5,981,106	\$5,997,580	\$5,981,106	\$5,955,078	\$0	\$0	
CMO's	\$169,881	\$2,327,632	\$2,307,161	\$6,543,452	\$6,468,000	\$6,496,647	\$6,284,588	\$0	\$0	
Agency Securities (B)	\$123,649,583	\$161,499,951	\$158,574,725	\$132,085,828	\$129,322,071	\$124,922,679	\$120,407,427	\$0	\$0	
Mortgaged Backed Securities	\$28,799,935	\$27,531,509	\$27,100,864	\$23,516,869	\$23,050,666	\$22,308,631	\$21,693,160	\$0	\$0	
Equity Securities (C)	\$84,239	\$0	\$79,661	\$0	\$77,533	\$0	\$70,258	\$0	\$0	
Bond Mutual Funds	\$43,841,262	\$46,697,531	\$43,899,237	\$46,697,531	\$44,092,490	\$46,697,531	\$43,694,390	\$0	\$0	
Municipal Bonds (E)	\$73,883,074	\$83,577,411	\$80,788,233	\$76,573,431	\$73,384,735	\$79,658,667	\$75,430,670	\$0	\$0	
Corporate Bonds (D)	\$139,989,782	\$187,661,619	\$187,370,524	\$150,866,032	\$149,060,025	\$156,270,276	\$150,680,203	\$0	\$0	
US Gov Related Securities										
Total	\$523,542,123	\$657,969,171	\$648,887,152	\$579,608,229	\$568,797,080	\$584,621,694	\$566,501,931	\$0	\$0	
Endowment Funds										
Money Market Accounts/Repos (A)	\$175	\$3,659,076	\$3,659,076	\$668,995	\$668,995	\$407,302	\$407,302	\$0	\$0	
Certificates of Deposit	\$18,600	\$18,600	\$18,600	\$18,600	\$18,600	\$18,600	\$18,600	\$0	\$0	
Agency Securities (B)	\$5,930,359	\$4,168,505	\$3,971,834	\$3,029,175	\$2,951,815	\$2,509,075	\$2,394,365	\$0	\$0	
Mortgaged Backed Securities	\$998,929	\$780,920	\$769,452	\$2,830,592	\$2,791,199	\$2,645,919	\$2,575,098	\$0	\$0	
Equity Securities (C)	\$9,754,139	\$5,658,518	\$10,089,628	\$5,658,518	\$10,596,755	\$5,658,518	\$10,467,799	\$0	\$0	
Municipal Bonds	\$2,287,741	\$2,789,725	\$2,777,143	\$3,275,153	\$3,241,436	\$3,254,999	\$3,178,023	\$0	\$0	
Corporate Bonds (D)	\$6,736,080	\$6,852,795	\$6,707,128	\$8,120,150	\$8,153,865	\$9,329,143	\$9,123,910	\$0	\$0	
US Gov Related Securities										
Total	\$25,726,023	\$23,928,139	\$27,992,861	\$23,601,183	\$28,422,665	\$23,823,556	\$28,165,097	\$0	\$0	
Other Funds										
Cash/Sweeps	286,025									
Money Market Accounts/Repos (A)	\$35,401,325	\$9,925,778	\$9,925,778	\$14,887,455	\$14,887,455	\$5,911,617	\$5,911,617	\$0	\$0	
Agency Securities (B)	\$866,895	\$839,273	\$865,976	\$839,273	\$858,985	\$839,273	\$844,469	\$0	\$0	
Total	\$36,554,245	\$10,765,051	\$10,791,754	\$15,726,728	\$15,746,440	\$6,750,890	\$6,756,086	\$0	\$0	
Grand Total	\$585,822,391	\$692,662,361	\$687,671,767	\$618,936,140	\$612,966,185	\$615,196,140	\$601,423,114	\$0	\$0	

LSU
Investment Summary
For the Quarter Ended March 31, 2018

Fund Description	As of 7/1/2017	As of 9/30/2017		As of 12/31/2017		As of 3/31/2018		As of 06/30/2018	
	Value	Cost	Market Value	Cost	Market Value	Cost	Market Value	Cost	Market Value
LSU Health Shreveport									
Current Funds									
Cash/Sweeps S.	\$57,669,013	\$53,477,458	\$53,477,458	\$67,313,752	\$67,313,752	\$67,712,559	\$67,712,559		
Cash/Sweeps	\$57,669,013	\$53,477,458	\$53,477,458	\$67,313,752	\$67,313,752	\$67,712,559	\$67,712,559	\$0	\$0
Money Market Accounts/Repos (A)	\$118	\$6	\$6	\$17	\$17	\$65	\$65		
Treasury Notes (B)	\$998,960	\$1,000,000	\$999,330	\$1,734,836	\$1,733,178	\$484,905	\$484,302		
Agency Securities (B)	\$6,073,394	\$5,609,045	\$5,573,248	\$4,855,809	\$4,804,698	\$4,855,388	\$4,774,546		
Mortgaged Backed Securities (B)	\$441,044	\$331,842	\$323,821	\$271,211	\$265,015	\$250,408	\$243,611		
Municipal Bonds (E)	\$15,944,949	\$17,535,599	\$17,448,017	\$18,498,299	\$18,312,114	\$18,953,835	\$18,693,895		
Corporate Bonds (D)	\$1,257,980	\$1,263,637	\$1,264,595	\$252,125	\$251,875	\$252,125	\$252,188		
Total	\$82,385,458	\$79,217,587	\$79,086,475	\$92,926,049	\$92,680,649	\$92,509,285	\$92,161,166	\$0	\$0
Endowment Funds									
Cash/Sweeps	\$6,883,023	\$6,880,687	\$6,880,687	\$8,429,003	\$8,429,003	\$8,723,520	\$8,723,520		
Equity Securities (C)	\$15,006	\$7,650	\$14,821	\$7,650	\$15,523	\$7,650	\$14,472		
Mutual Funds	\$53,956,268	\$50,429,841	\$55,246,699	\$48,460,320	\$53,627,499	\$47,418,530	\$51,530,223		
Total	\$60,854,297	\$57,318,178	\$62,142,207	\$56,896,973	\$62,072,025	\$56,149,700	\$60,268,215	\$0	\$0
Grand Total	\$143,239,755	\$136,535,765	\$141,228,682	\$149,823,022	\$154,752,674	\$148,658,985	\$152,429,381	\$0	\$0
LSU HCSD									
Current Funds									
Cash/Sweeps	\$72,234,882	\$71,049,717	\$71,049,717	\$80,382,971	\$80,382,971	\$78,090,222	\$78,090,222		
Total	\$72,234,882	\$71,049,717	\$71,049,717	\$80,382,971	\$80,382,971	\$78,090,222	\$78,090,222	\$0	\$0
Other Funds									
Cash/Sweeps	\$4,879,243	\$3,684,891	\$3,684,891	\$4,029,716	\$4,029,716	\$4,183,308	\$4,183,308		
Money Market Accounts/Repos (A)	\$8,504,473	\$8,525,204	\$8,525,204	\$8,545,270	\$8,545,270	\$8,571,343	\$8,571,343		
Equity Securities (C)	\$400,421	\$406,621	\$406,621	\$414,854	\$414,854	\$370,066	\$370,066		
US Gov Related Securities	\$6,404	\$2,697	\$2,697	\$1,769	\$1,769	\$733	\$733		
Total	\$13,790,541	\$12,212,792	\$12,619,413	\$12,576,755	\$12,991,609	\$12,755,384	\$13,125,450	\$0	\$0
Grand Total	\$86,025,423	\$83,262,509	\$83,669,130	\$92,959,726	\$93,374,580	\$90,845,606	\$91,215,672	\$0	\$0
System Total	\$815,087,569	\$912,460,635	\$912,569,579	\$861,718,888	\$861,093,439	\$854,700,731	\$845,068,167	\$0	\$0

* Negative balance in the cash/Sweeps section of the current funds does not represent an actual negative bank balance, rather it represents a timing difference of the allocation of the current funds.

** Small endowment funds at LSUS were moved to the LSUS Foundation to accommodate Workday.

*** LSU Paid Campuses include the following: LSU, LSU Ag Center, LSUA, LSUE, LSUS, and the Pennington Biomedical Research Center.

BENCHMARK NOTES (Example Only)

(A) Benchmarked against 90 day T-Bill

(B) Benchmarked against Barclay's US Agg Bond TR USD

(C) US equities benchmarked against Russell 3000 and international against MSCI emerging markets

(D) Benchmarked against XYZ

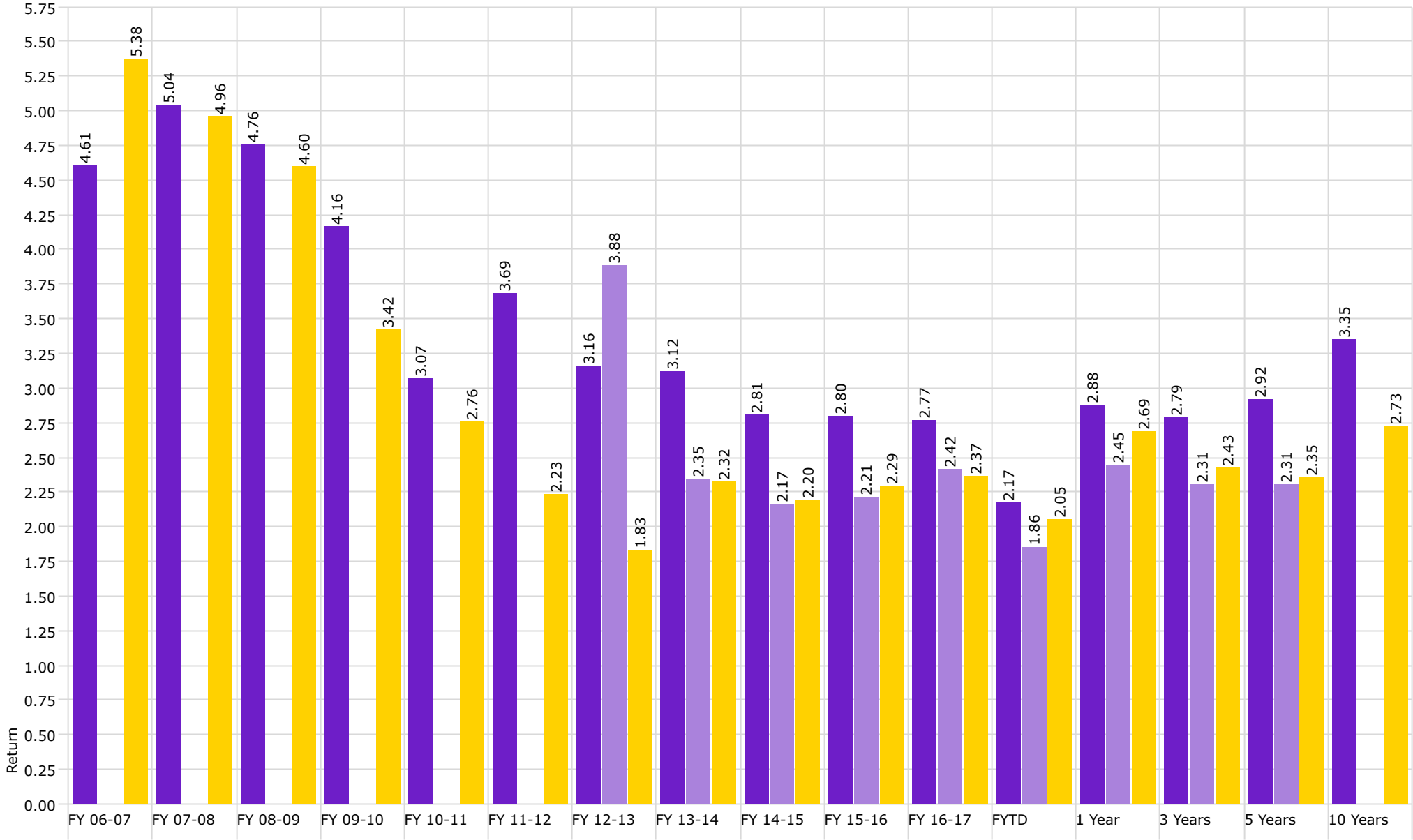
(E) Benchmarked against XYZ

Disclaimer: Pursuant to PM-9, corporate bonds/notes only available for investment beginning 7-1-2011. Louisiana law provides for restrictions on maturity and allocation and may effect benchmark comparisons.



Investment Management Program Non Endowed Accounts **Realized Yield**

As of 3/31/2018



■ Non Endowed

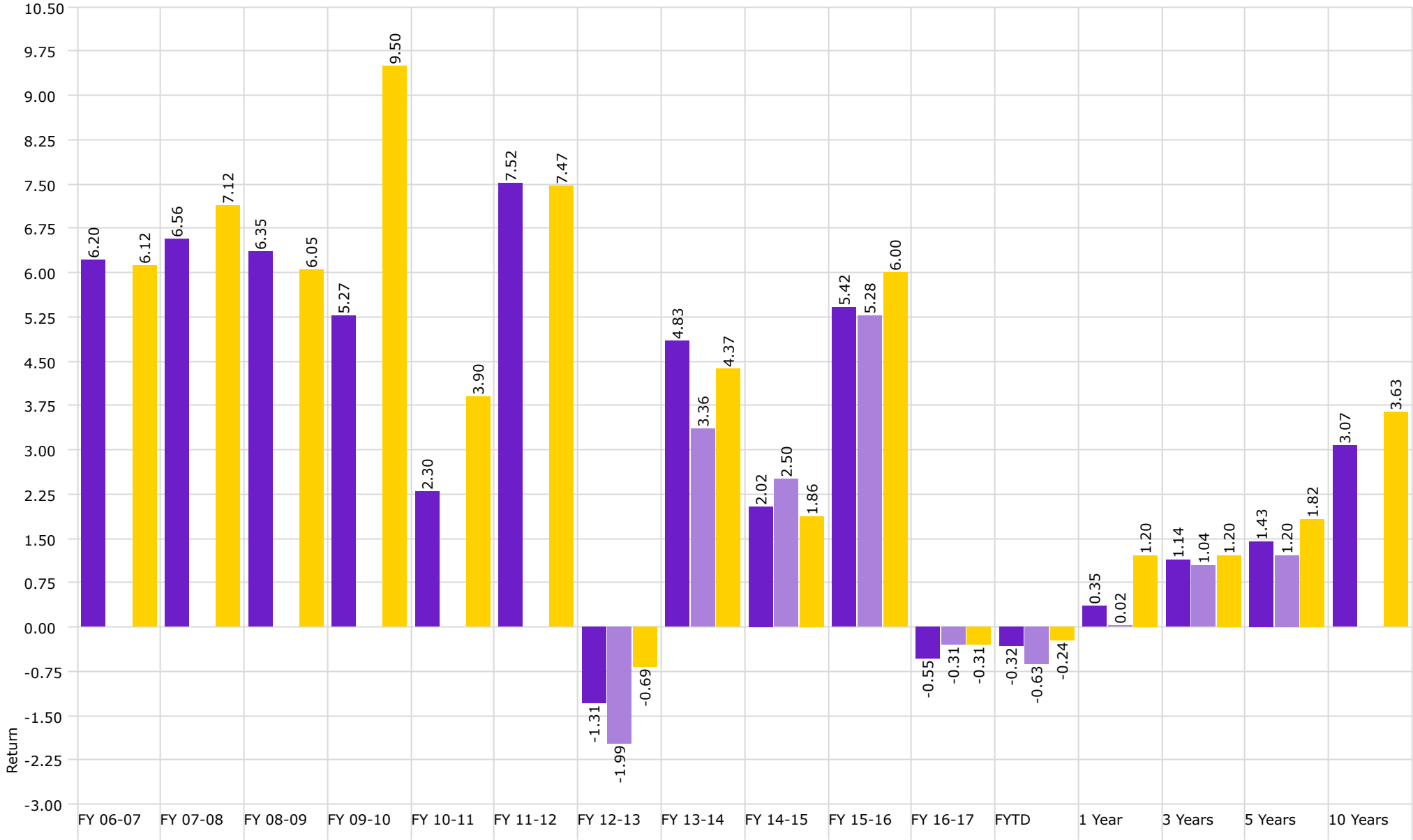
■ Health Plan

■ Barclays Aggregate Bond Index



Investment Management Program Non Endowed Accounts **Total Return**

As of 3/31/2018



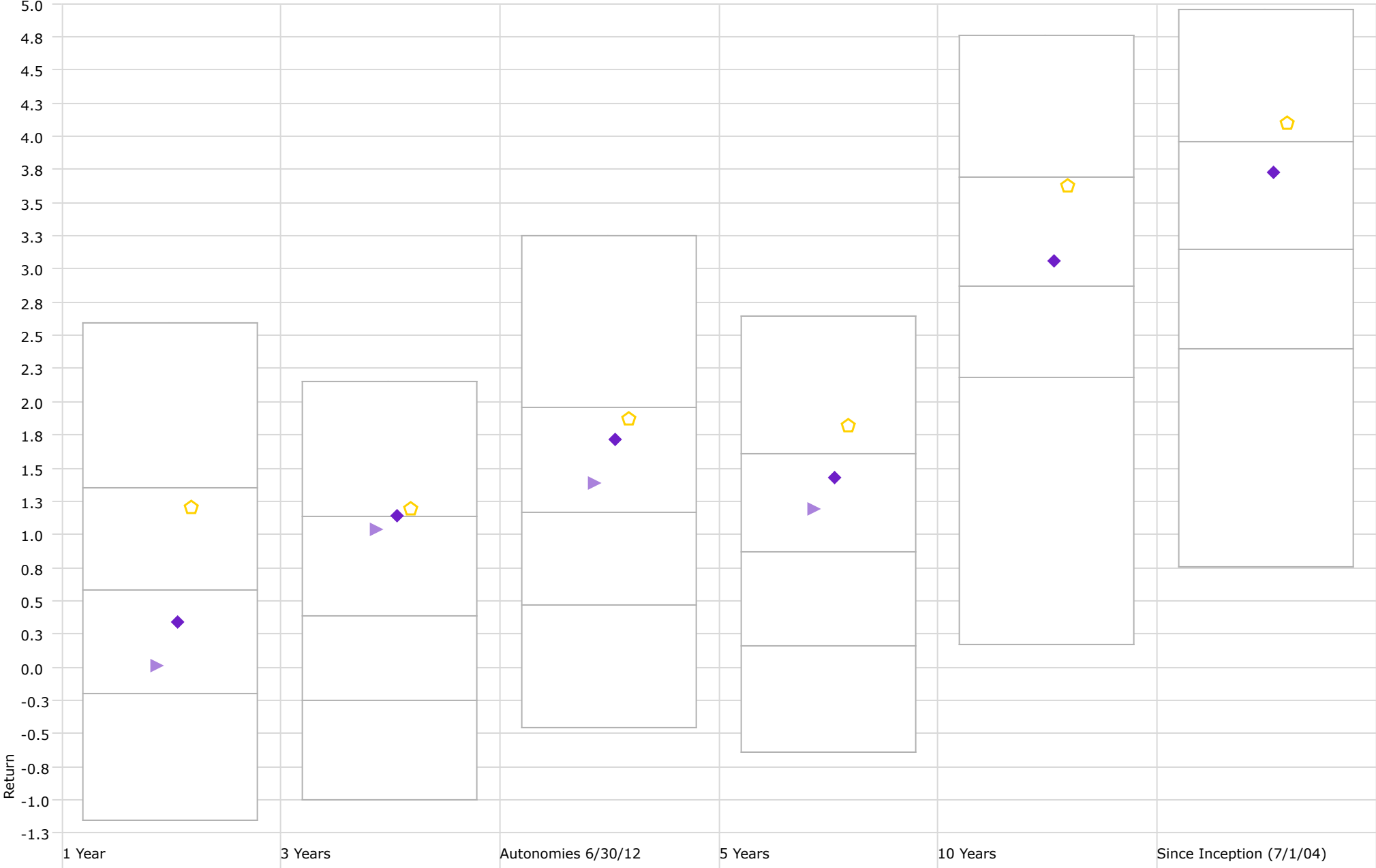
■ Non Endowed

■ Health Plan

■ Barclays Aggregate Bond Index

Performance Relative to Peer Group (Total Return)

Peer Group (5-95%): All Managed Investments - U.S. - Intermediate-Term Bond



◆ Non Endowed

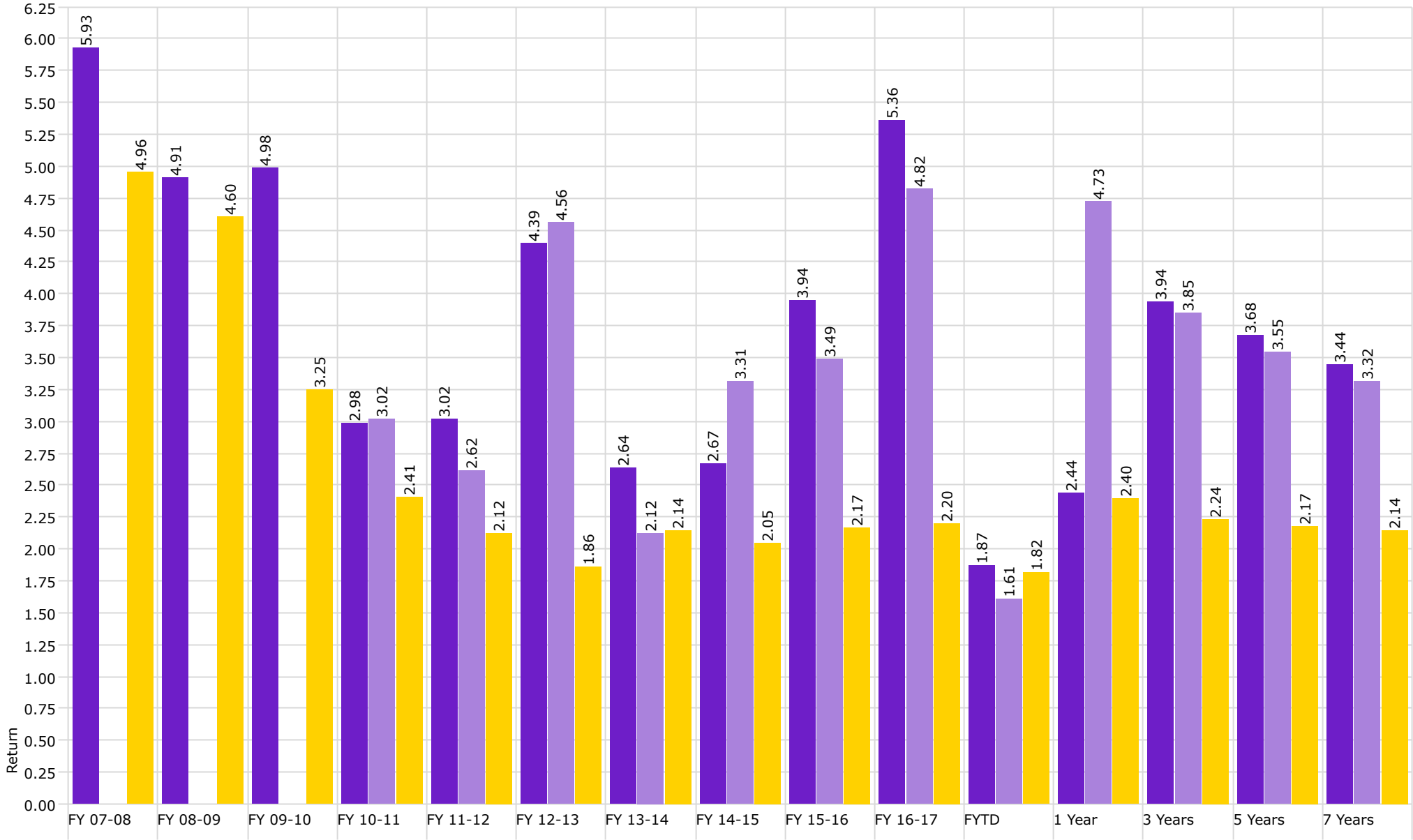
▶ Health Plan

⬠ Barclays Aggregate Bond Index



Investment Management Program Endowed Accounts **Realized Yield**

As of 3/31/2018



Endowment

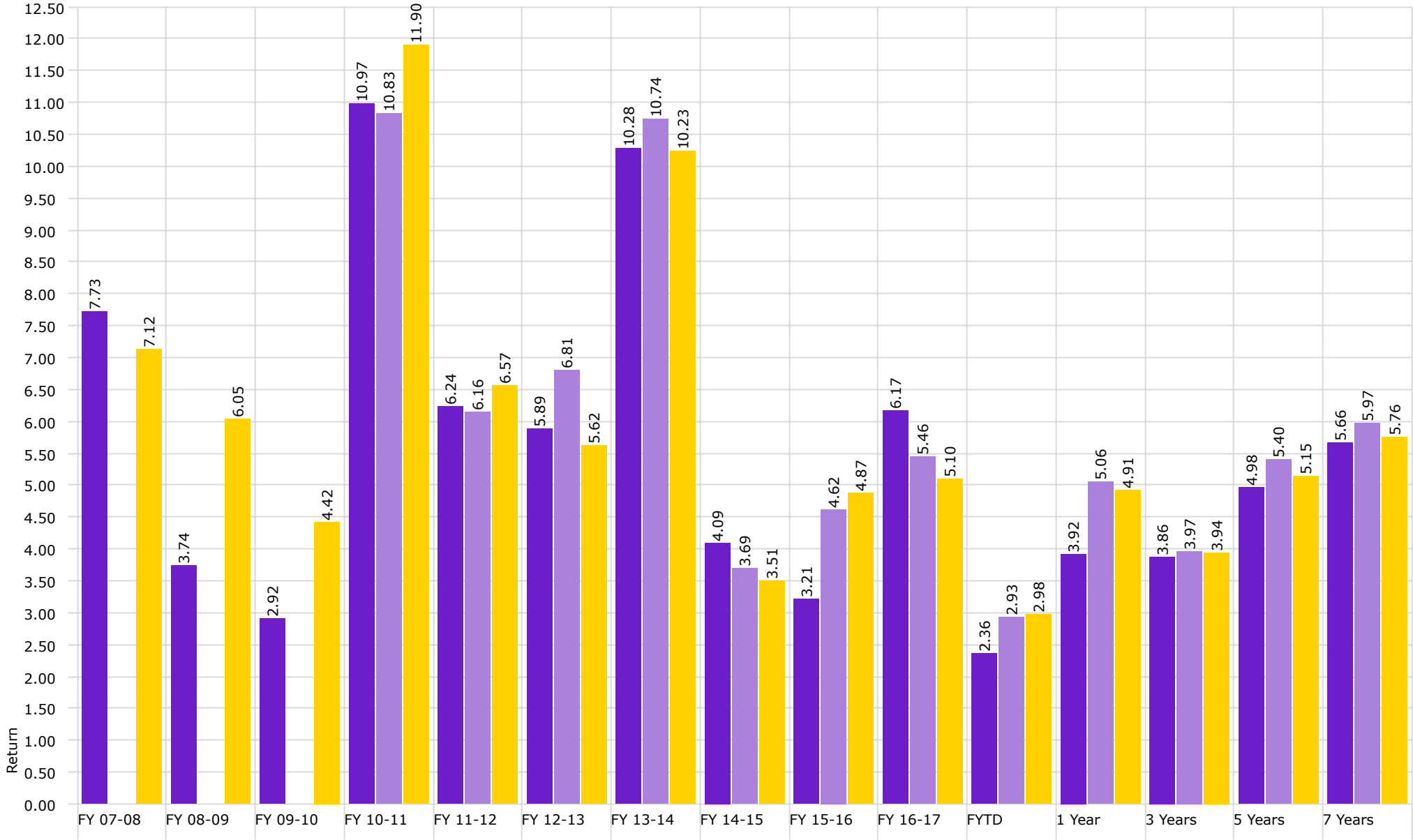
Osher

Endowed Benchmark



Investment Management Program Endowed Accounts **Total Return**

As of 3/31/2018



Endowment

Osher

Endowed Benchmark