

Achrafalana

BASIN

the Nature of
Things to Come

Achnafalaya
BASIN



The *Nature* of things to come

Outdoor Billboard



ATCHAFALAYA

NEWS Flash
June, 2002

Official Publication of the Atchafalaya Basin Program



Plans to upgrade the boat launch include raising the parking lot, which is now partially under water.

GROUP TOURS LAKE VERRET ON SPRING TRIP OF BASIN

May 2, 2002 — Plans to upgrade the boat launch include raising the parking lot, which is now partially under water. Trekking through Assumption Parish on a lovely spring day to learn more about Atchafalaya Basin Program (ABP) improvements, is one way ABP Executive Director Sandra Thompson Decoteau enjoys her days out in the field. Today she and a large group of citizens journeyed by boat on Lake Verret and surrounding bays to get a firsthand look at how ABP projects will enhance this area within the over 500,000-acre basin system.

Lake Verret is just south of Natchitochesville, and at the Atchafalaya Landing site participants gathered to see the \$1.5 million proposed plans, where a boat launch and dock, sewer improvements, new parking area, vegetative plantings, and a handicap ramp will be constructed with funds from the state Department of Natural Resources. Additionally, the U.S. Army Corps of Engineers and Assumption parish (local sponsor) will co-share in a proposed \$5 million Lake Verret Ecosystem Restoration project that could possibly begin as early as July of this year.

Assumption Parish President Marty Tische said "the only public landing on Lake Verret is now ready for revitalizing with thanks and appreciation to all that have worked so

steadily with us." He said "the lake" has, over the years, degraded due to siltation. The project will improve habitat for many forms of fish and wildlife in Lake Verret.

Area legislators, Senator Butch Costerton, and Reps. Carla Darter, Emma Deville, Roy Quevener and many constituency activities helped to assess the aquatic ecosystem problems and offer input on how to improve the lake for recreation and for optimal recreational use.

Decoteau introduced the federal sponsor project manager Mark Wingate of the Corps' New Orleans District to the crowd to give a detailed explanation on the feasibility study which is phase two of the project. He said typically construction phases take a little over a year to complete under the Section 206, Water Resources Development Act plan.

The tour concluded with a crawfish lunch and plenty of trinkets prepared by area parishes and the Community Bank of Natchitochesville.

For more information, contact ABP Executive Director Sandra Thompson Decoteau at 225-342-0569 or 342-6274.

2ND ANNUAL ATCHAFALAYA Adventure Race

The second annual Atchafalaya Adventure Race was held Saturday and Sunday (September 15 and 16). At the starting line on Saturday, the crowd cheered and waved hats when Boy Scout Pack 454 proudly carried the American flag as they led 31 teams at Lake Fausse Pointe State Park to begin the grueling race. Race coordinator, Ralph Morton of the Louisiana State Games Foundation, shouted the starting signal promptly at noon and 150 racers took off on foot carrying back packs and paddles.

Tracy Fee, Team Megahertz's woman team member, reported that an alligator got jumped into her canoe during a long, dark stretch of paddling. She screamed as the foot-long fish snapped its teeth at her heels. "It's just a gullet!" comforted a teammate.

"That's not a gullet!" Tracy asserted. According to Fee, the critics at the finish line were really different. "People there... even the Mayor was there!" said Fee.



Team Megahertz from Houston, Texas (B. Boyd, J. Costerton, C. Sherrin, and T. Fee) was the first team to complete the 133-mile trek.

and place (they went to DVB from New Orleans by Simmons, Rusty Bernard, Shannon Allison, and Tracy) who finished in 26 hours and 48 minutes. In second place was Team Bad from Baton Rouge (Patrick Moxley, Kimberly Snedden, and Tommy Lambert) who reached the finish line in 28 hours and 11 minutes. Only other team to finish the race was Mad 4 from Baton Rouge in a time of 29 hours and 6 minutes.

There were only one woman per team, but Team Bad had two women on the front. Moxley of Team Bad reported that the girls kept the boys going. The orienteering on Goat Island, the moon was out on Saturday night when the boys were out for hours in the dark. Lambert said that pairs of "little orange eyes" moments and then disappear

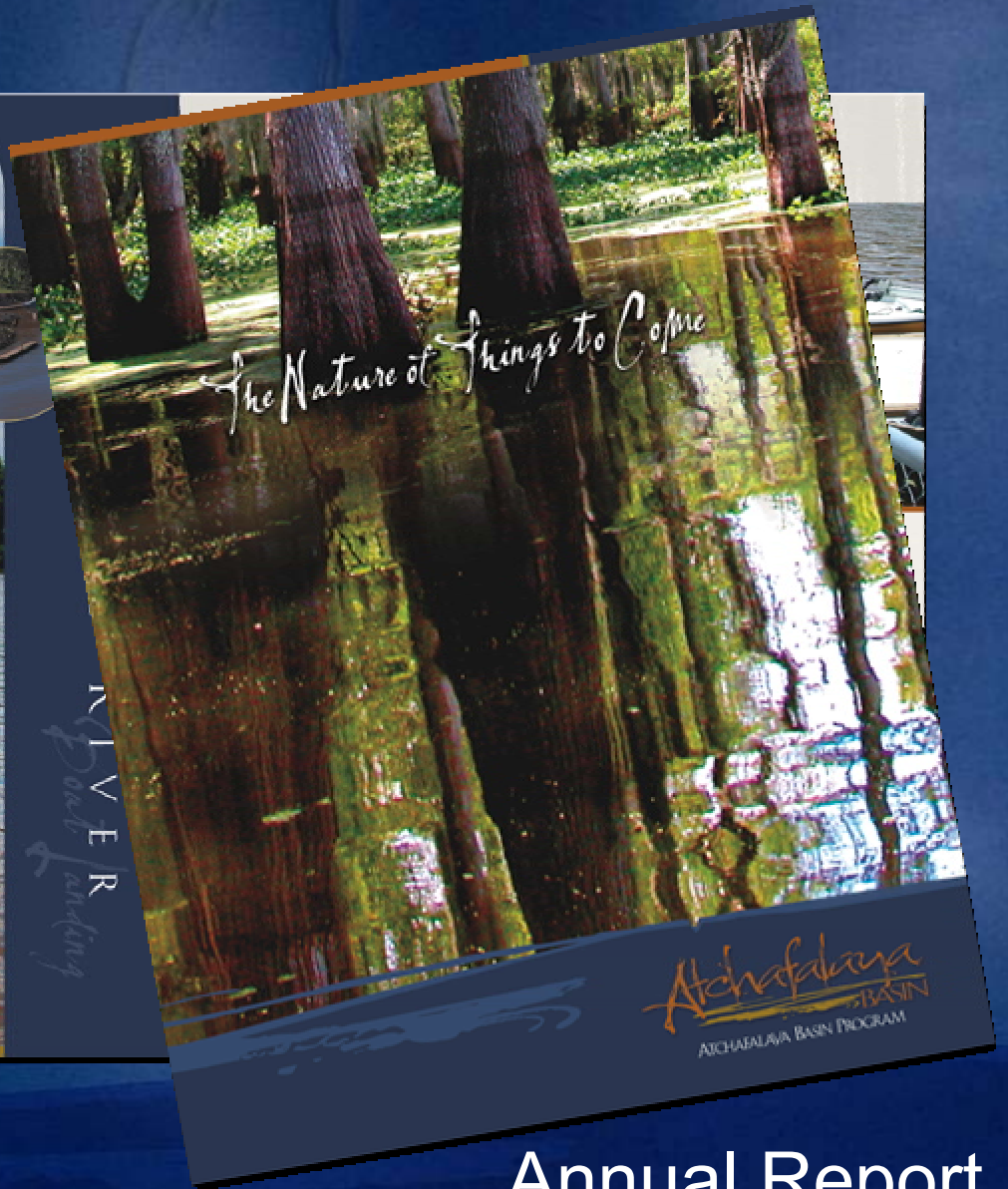
16, at Lake End Park in Morgan City. The park, located on the east side of LA 70 along Lake Fausse Pointe, was filled with campers, picnickers, and folks who came out to greet the racers at the finish line and listen to the music of Rindy Thibodeaux with Tout Les Soir and the Les Amis Cajon Band. Morgan City Mayor Tim Tringle and Sandra Thompson Decoteau offered congratulatory handshakes to many of the race finishers. At the finish line, racers were treated to delicious portions of Louisiana cuisine including shrimp fettuccine, boudin, and jambalaya.

Brad Guidry, President of the Tri-City Bass Master Federation in Morgan City hosted a kids casting contest. Brent "Chip" Bergman from Morgan City won the 7-10 year age group medal while Brad Ratcliff, Jr. of Sopheenville won the 11-14 year age group medal. Both boys won the opportunity to compete in the state competition to be held in Pineville in February.

For information about adventure racing, contact Ralph Morton, Executive Director of the Louisiana State Games Foundation, Inc. at (504) 524-2637 or visit www.louisianagames.com on the Web. For information about the 2002 Atchafalaya Race Program, contact Executive Director Sandra Thompson Decoteau at (225) 342-0569 or visit www.abp.com on the Web.



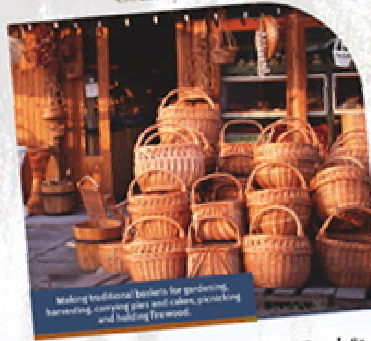
"News Flash" Newsletter



Annual Report



THE REED & CANE Country Baskets



Nhena Gauthier, owner of the Reed & Cane, is a contemporary basket artist



who specializes in working with natural materials. Her family owned business, the Reed and Cane has been operating in the St. Martinville community for 46 years.

Today, the family has another workshop in Billeaud, specializing in homestead and harvesting baskets.

Each Reed and Cane basket is woven by hand according to methods dating back to the early settlers, who learned their craft from Gulf Coast Native American weavers.

Call (800) 258-4553 with any special requests or questions

Atchafalaya

Atchafalaya

FESTIVAL St. Martinville



of St.

first Pepper
be a success. It
on the
weekend in
the small
y is bustling
ties. A pepper
test is one of
hts of the
bands that
pping on the
long the
ths, filled
s and crafts
hot
since St.
he pepper
pad is Avery
figinated
down the
pper sauce
ne's day.

ll

Visitor's Guidebook

OLD RIVER CONTROL
AUXILIARY STRUCTURE

Old River Control Structure

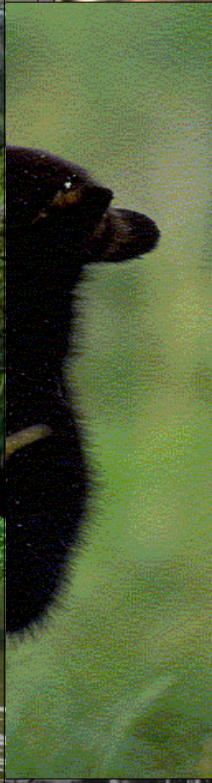


Bayou Des Glaise

Lake Fausse Pointe

Lake End Park

















V I S I T O R S C E N T E R

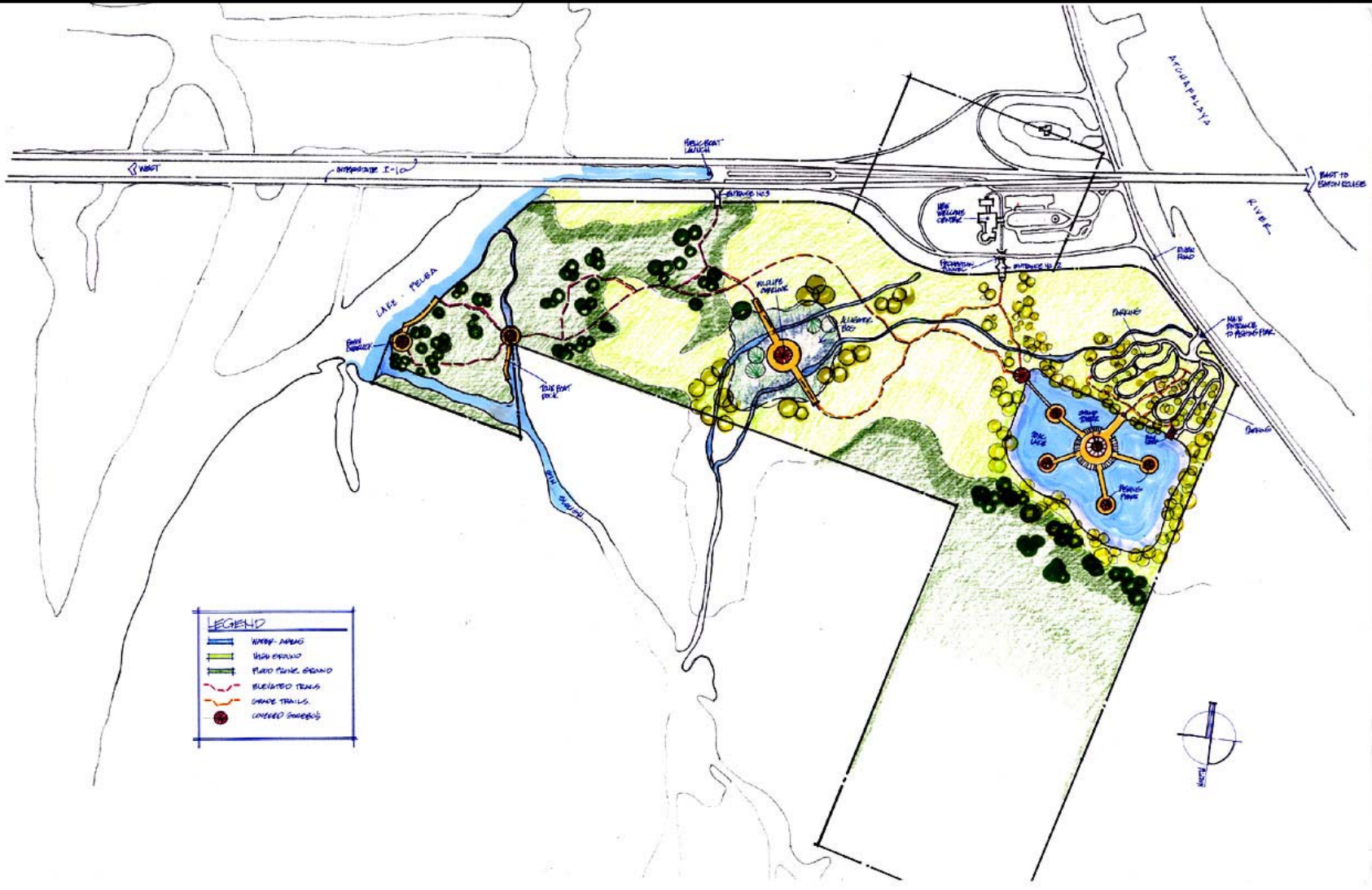
BUTTE LaROSE, LOUISIANA • ATCHAFALAYA BASIN PROGRAM

• CAPDEVIELLE • LOSAVIO • ARCHITECTS •

St. Martin

LEGEND

	WATER CHANNEL
	WILD ESCAPE
	PLAZA PLANTING DESIGN
	BLENDED TRAILS
	ORANGE TRAILS
	CONNECTED ELEMENTS



St. Martin



CHILDREN'S FISHING PIER

BUTTE LaROSE, LOUISIANA • ATCHAFALAYA BASIN PROGRAM

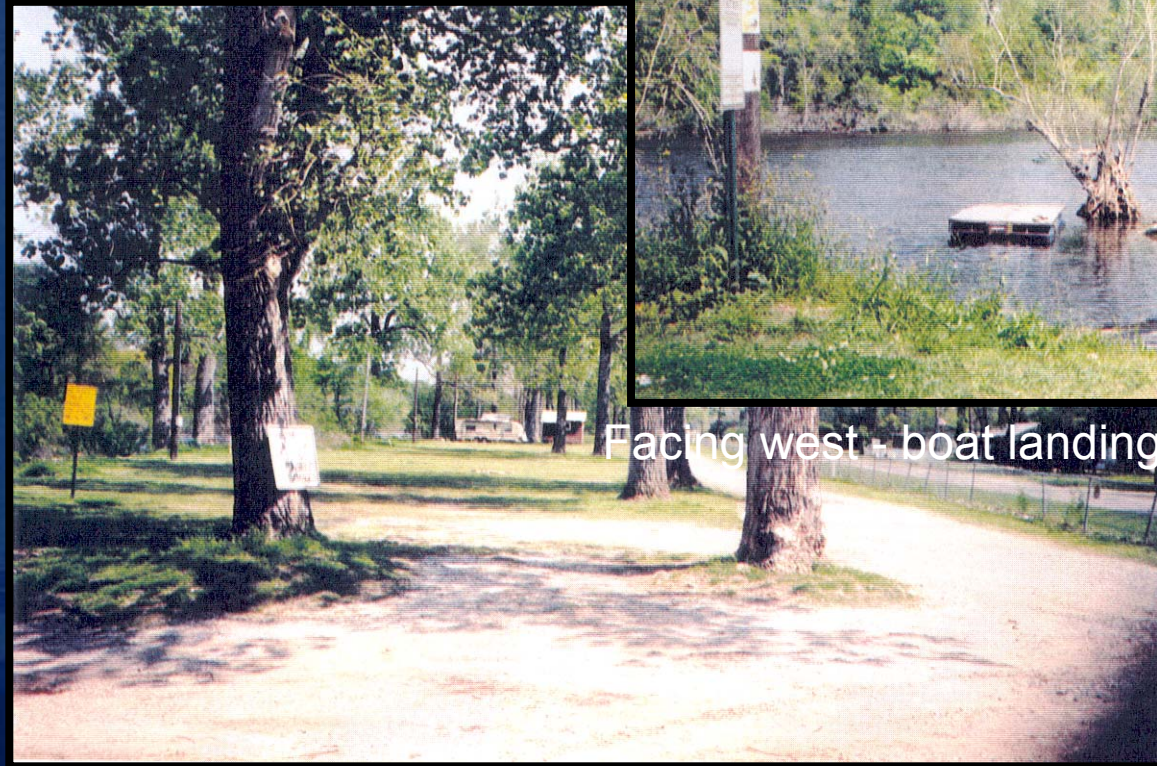
• CAPDEVIELLE • LOSAVIO • ARCHITECTS •

St. Martin

Uncle Dick Davis Park



Facing west - boat landing and water frontage

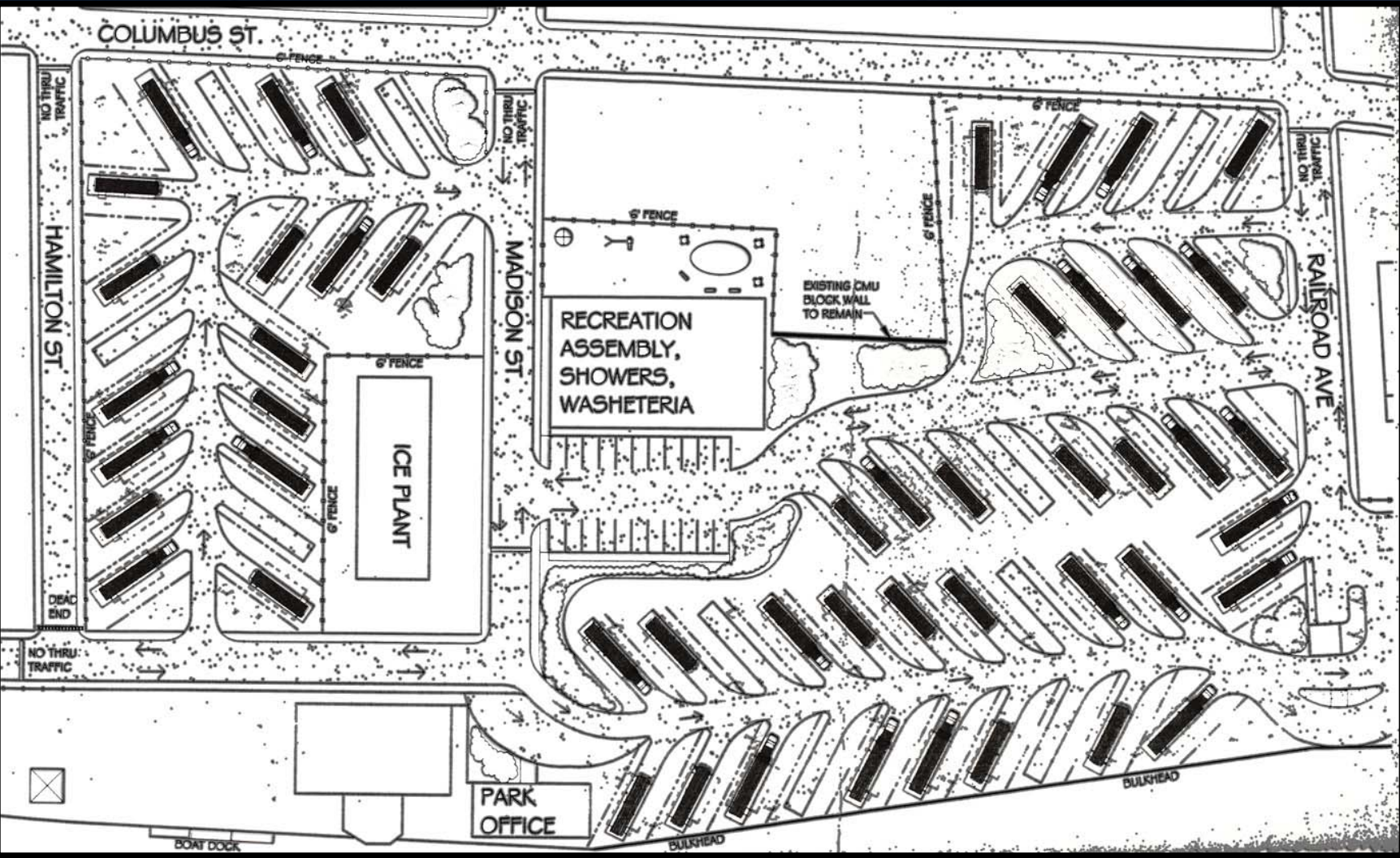


Facing north in park showing camping area and road

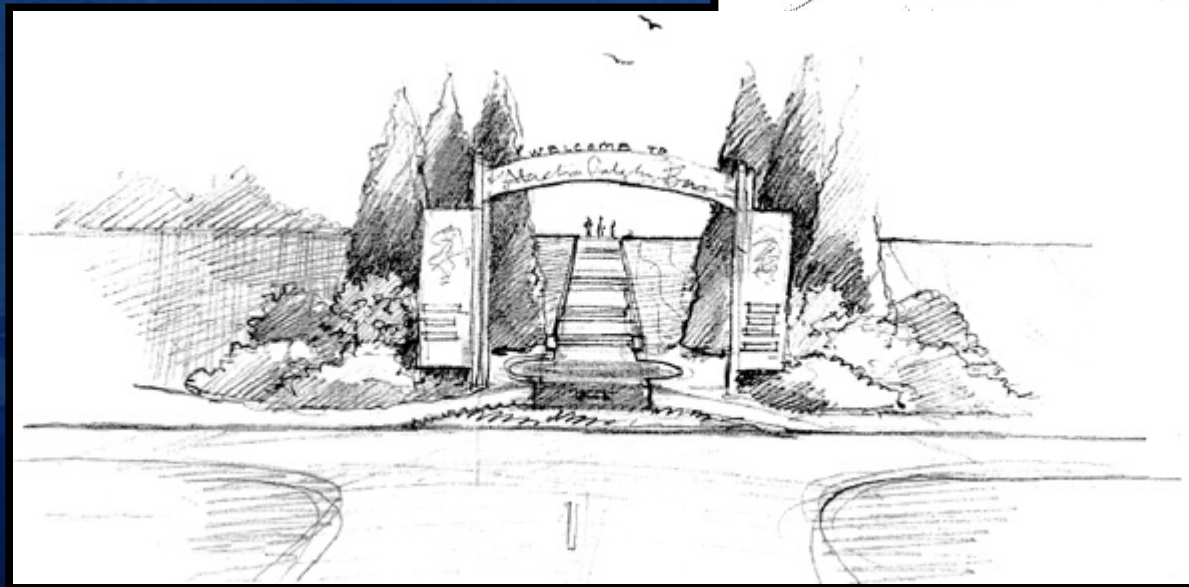
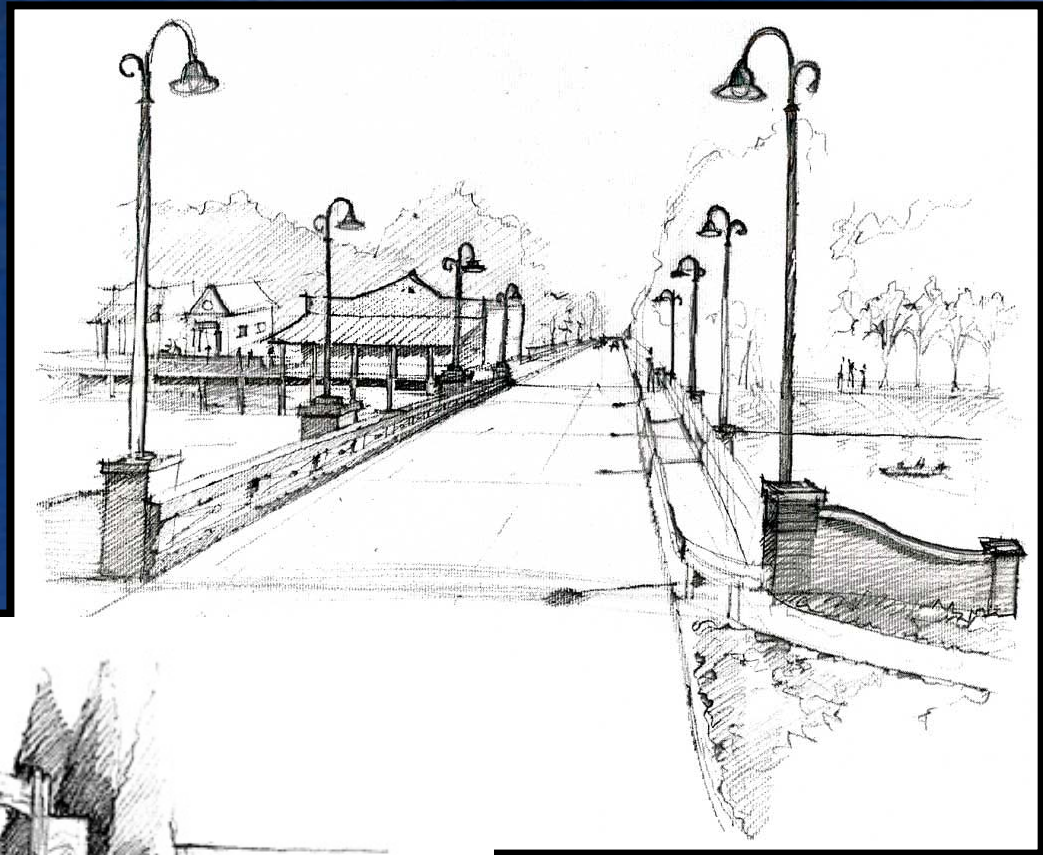
St. Martin

RV Campground

St. Martin

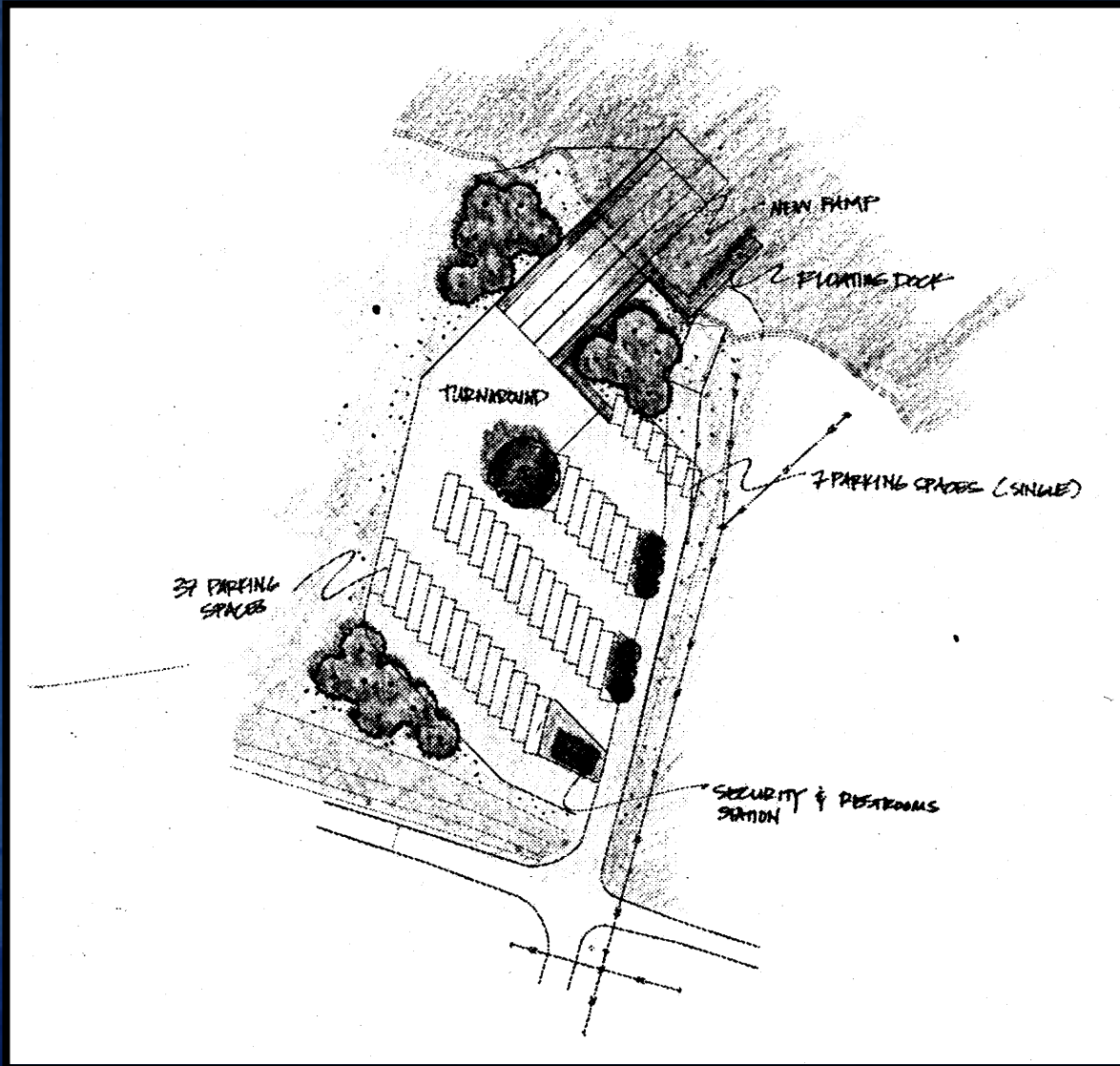


Henderson Bridge Enhancement



St. Martin

Butte LaRose Landing



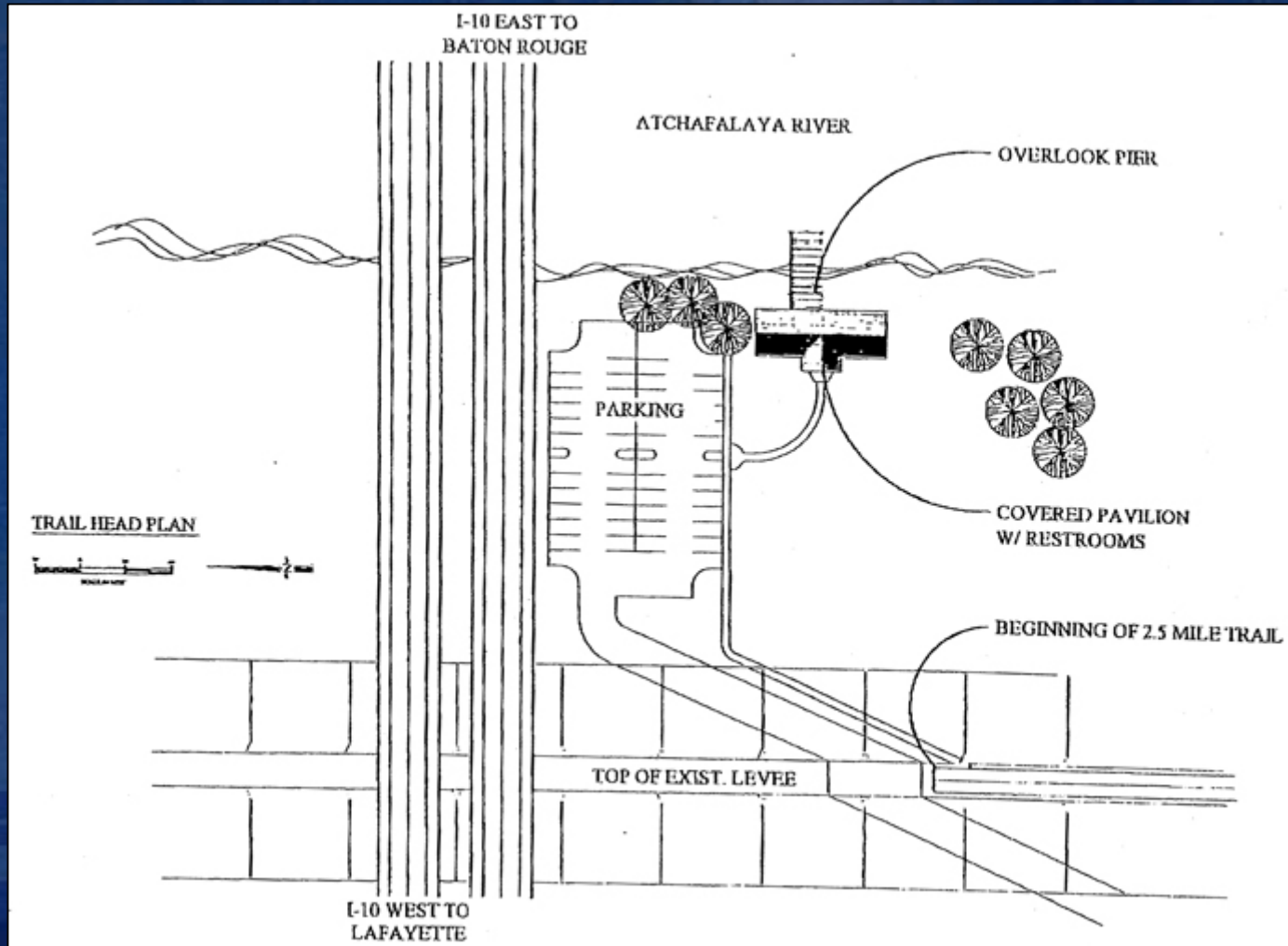
St. Martin

Lynch Park



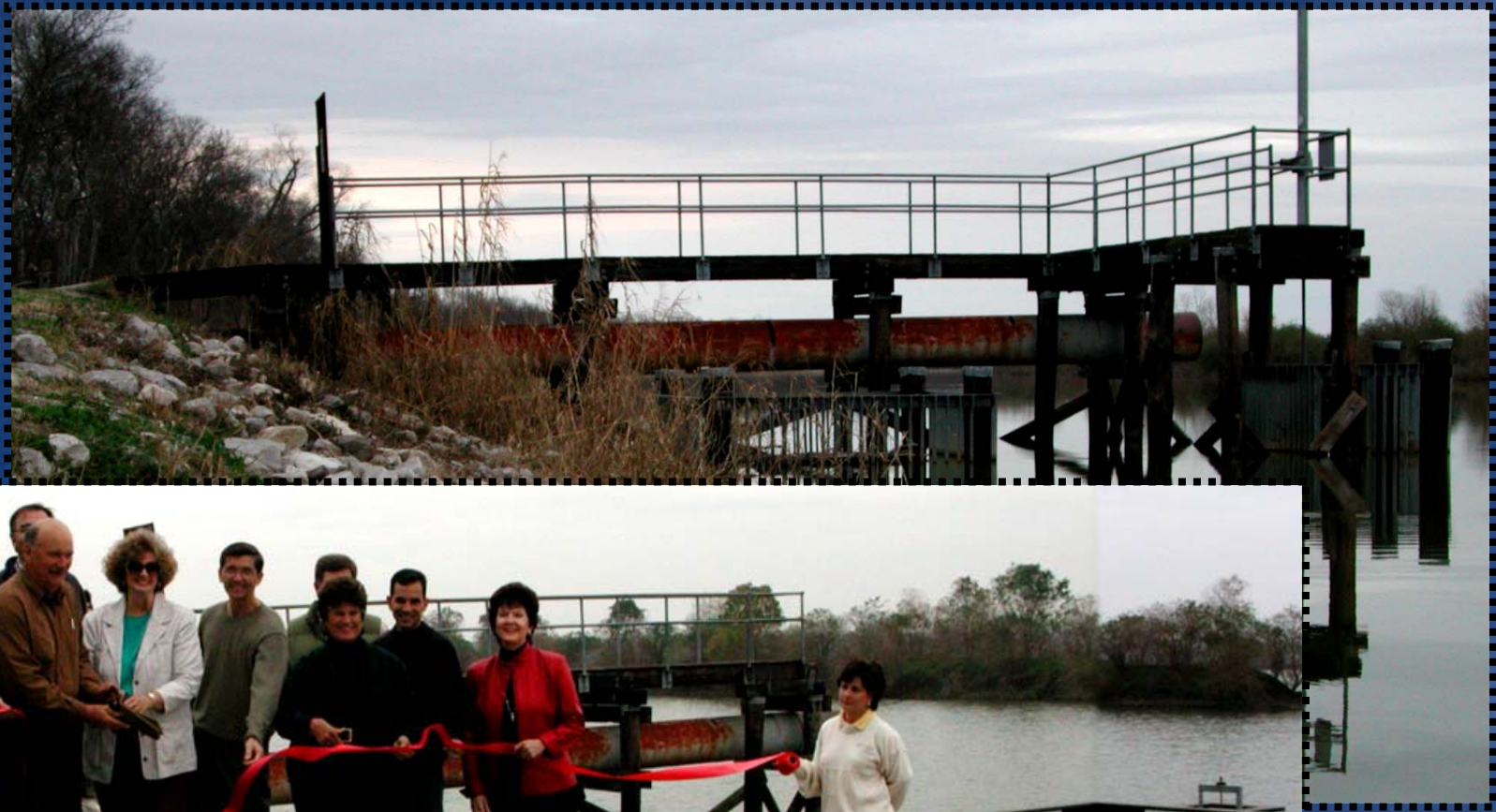
St. Martin

Levee Road Bike Trail



St. Martin

Spanish Lake Restoration



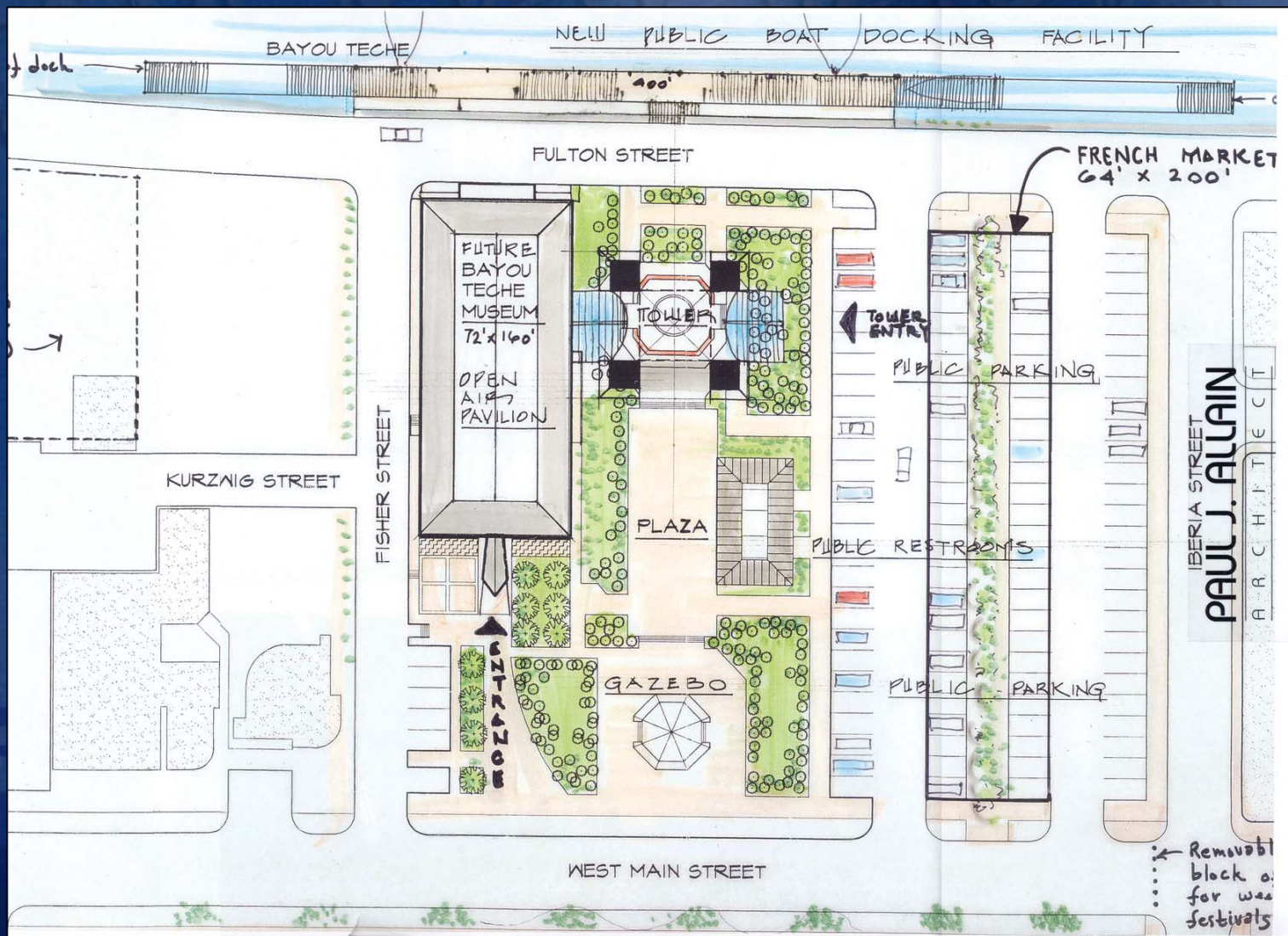
Iberia

Marshfield Landing



Iberia

New Iberia Warehouse Restoration

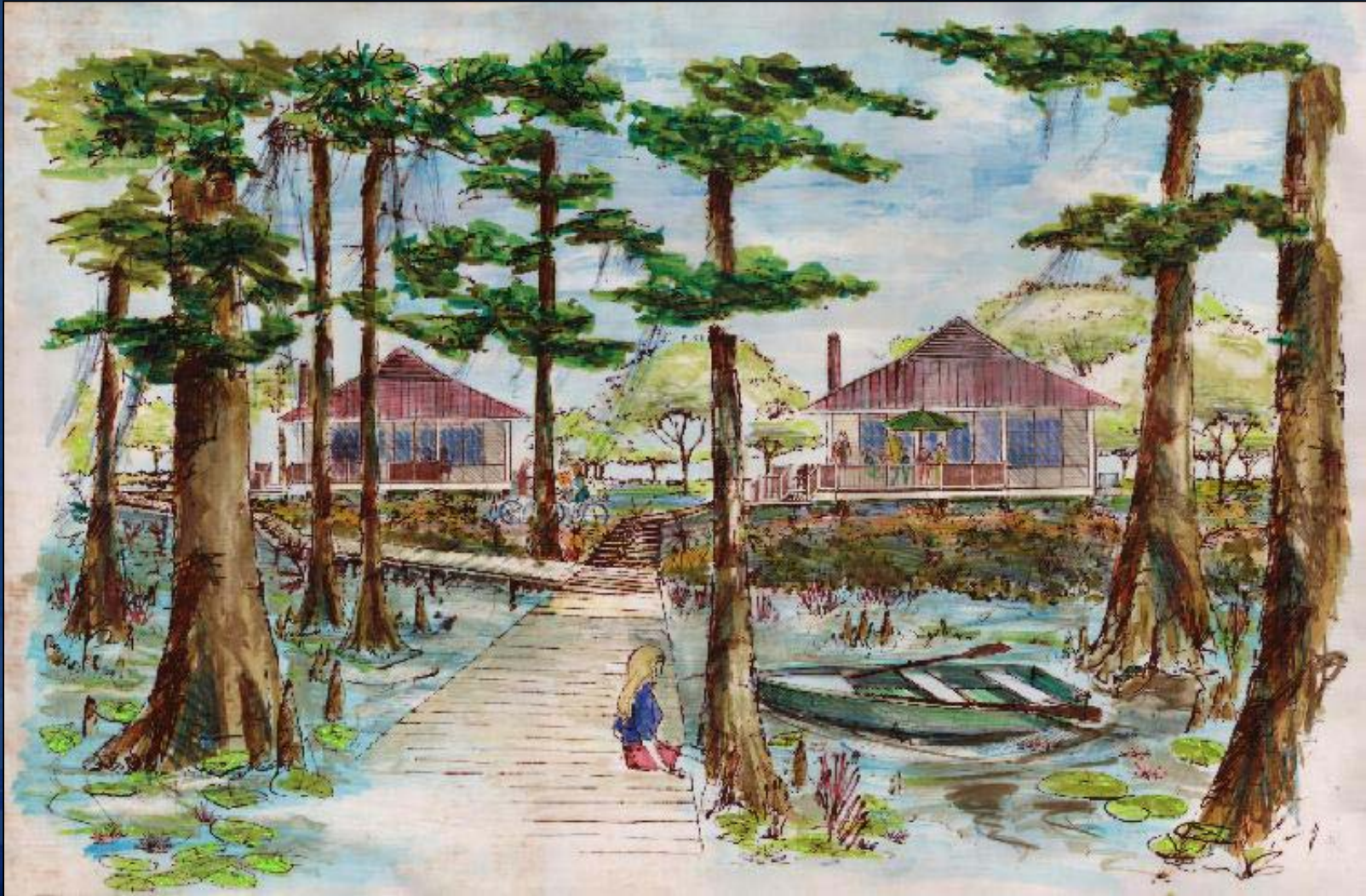


Iberia

Eagle Point Park



Eagle Point Park



Iberia

Lake Fausse Pointe Restoration



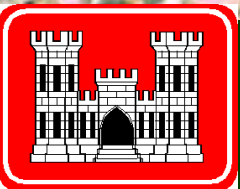
Dauterive
Lake

Sediment Trap

Eagle Point
Park

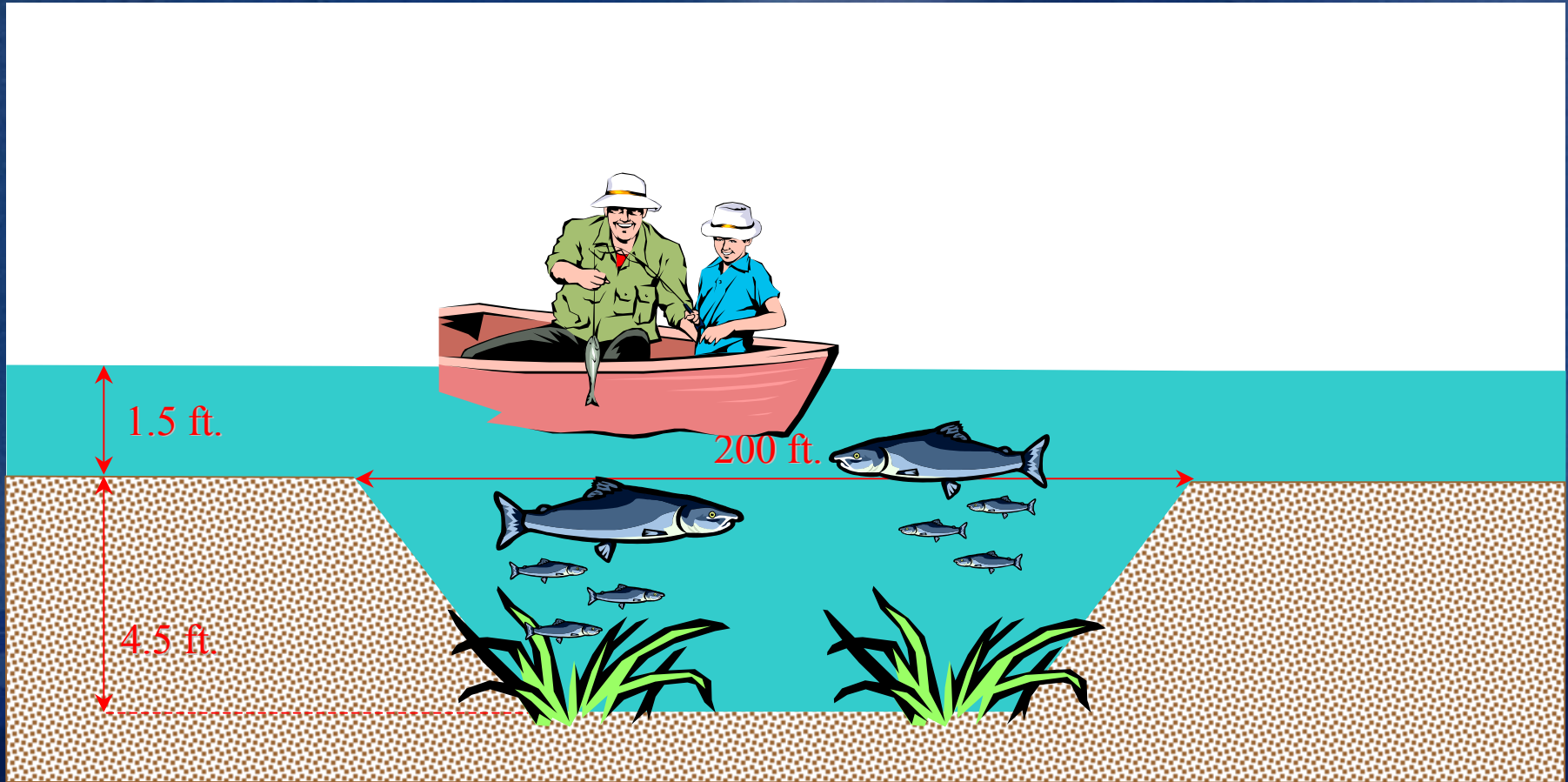
Lake Fausse
Pointe

Fish Hole



Lake Fausse Pointe Restoration

Conceptual “Fish Hole”



Jeanerette Home Restoration



iberia

Lake End Park Improvements



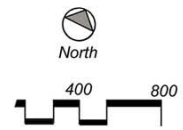
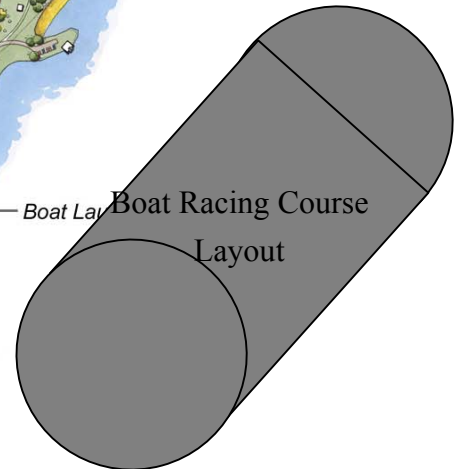
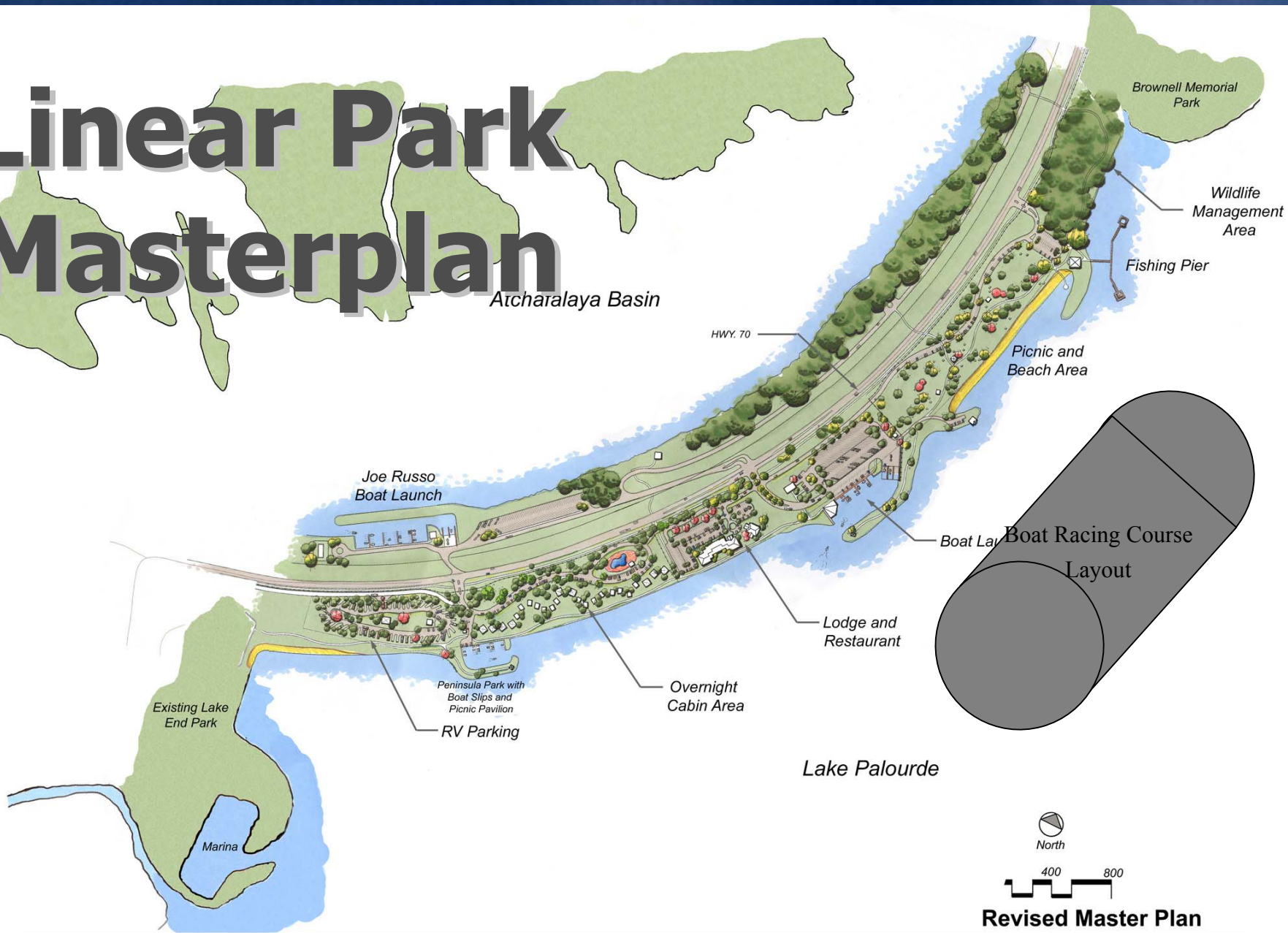
St. Mary

Lake End Park Improvements



St. Mary

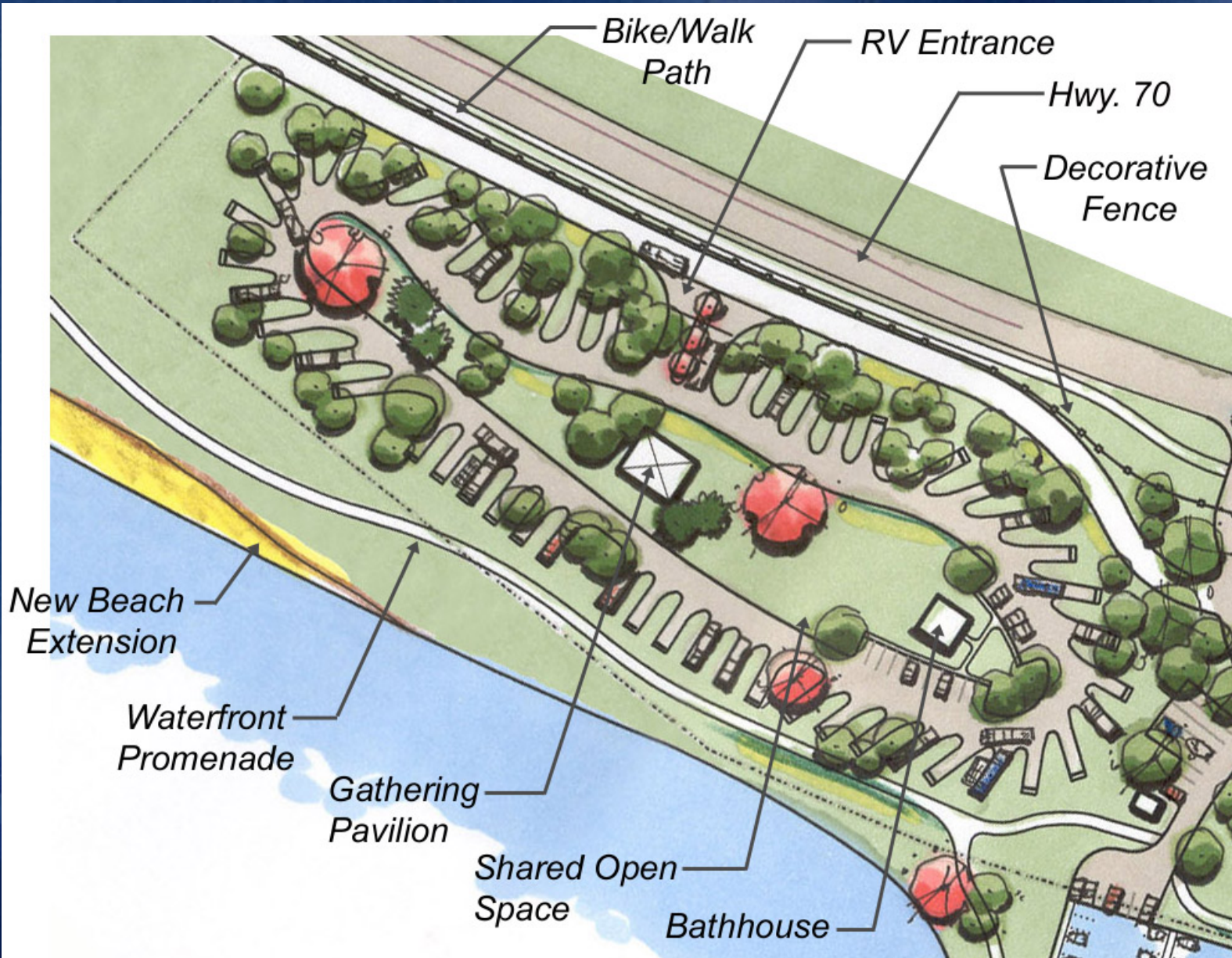
Linear Park Masterplan



Revised Master Plan



RV Camping Area

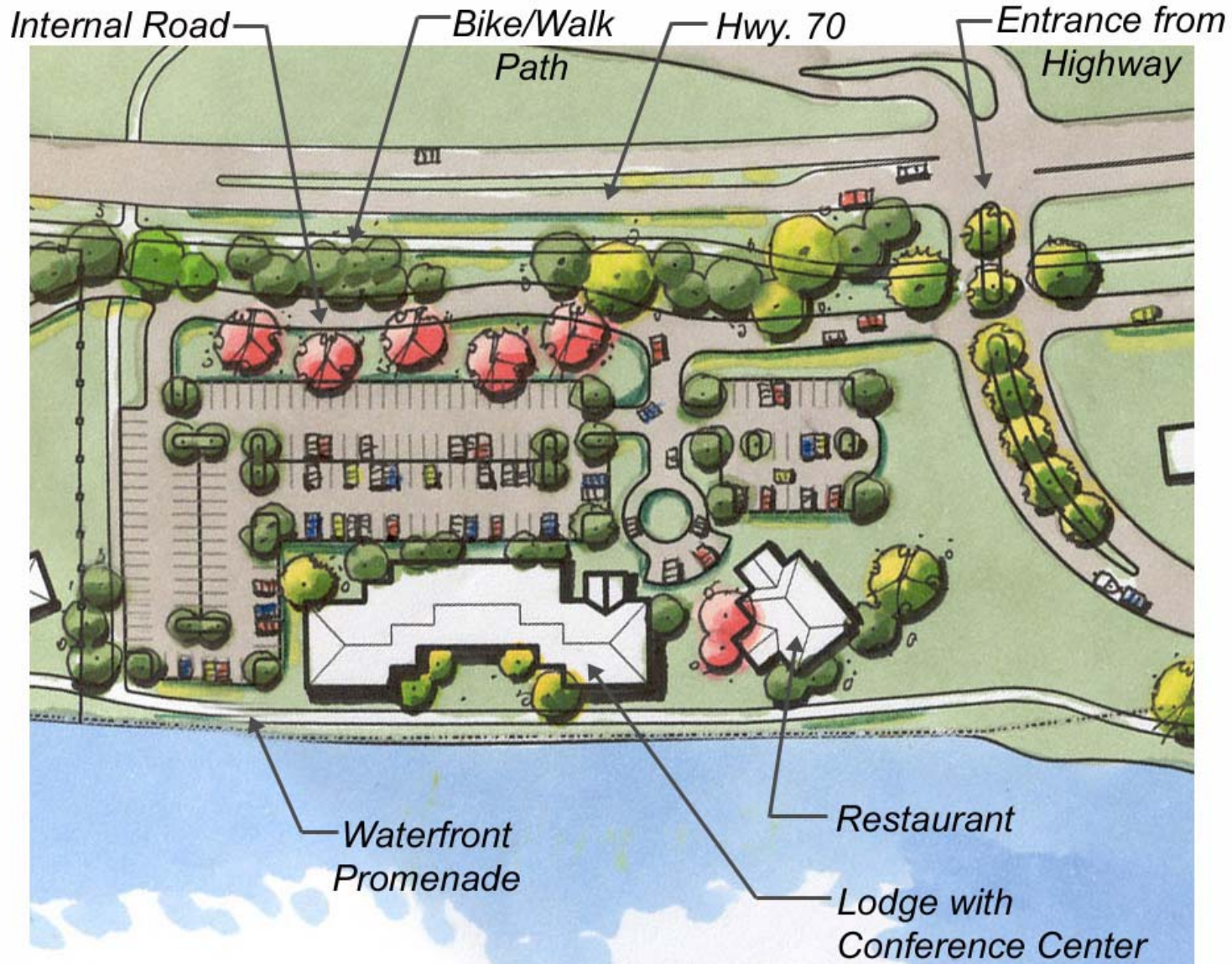


Cabin Area



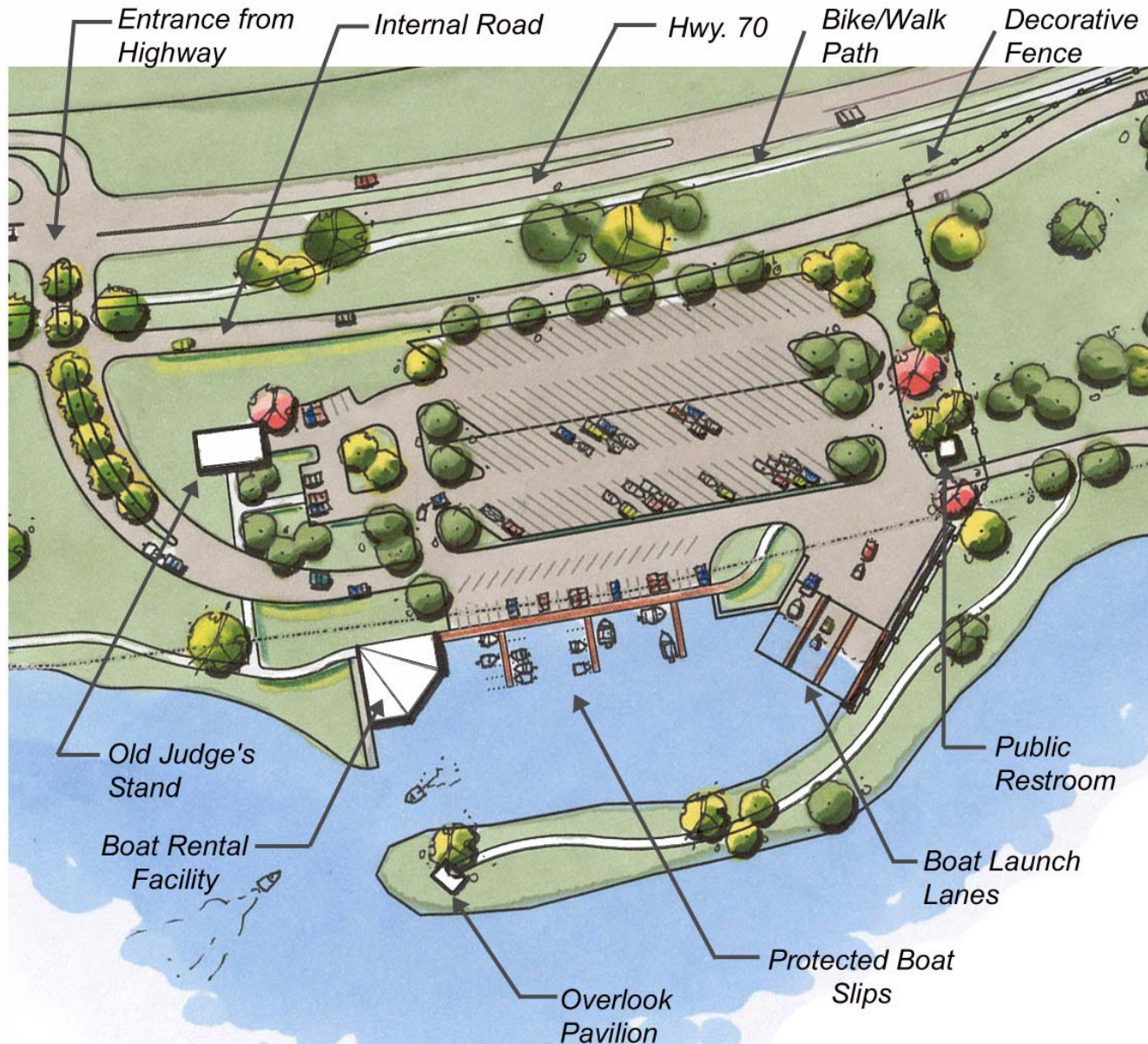
St. Mary

Commercial Area

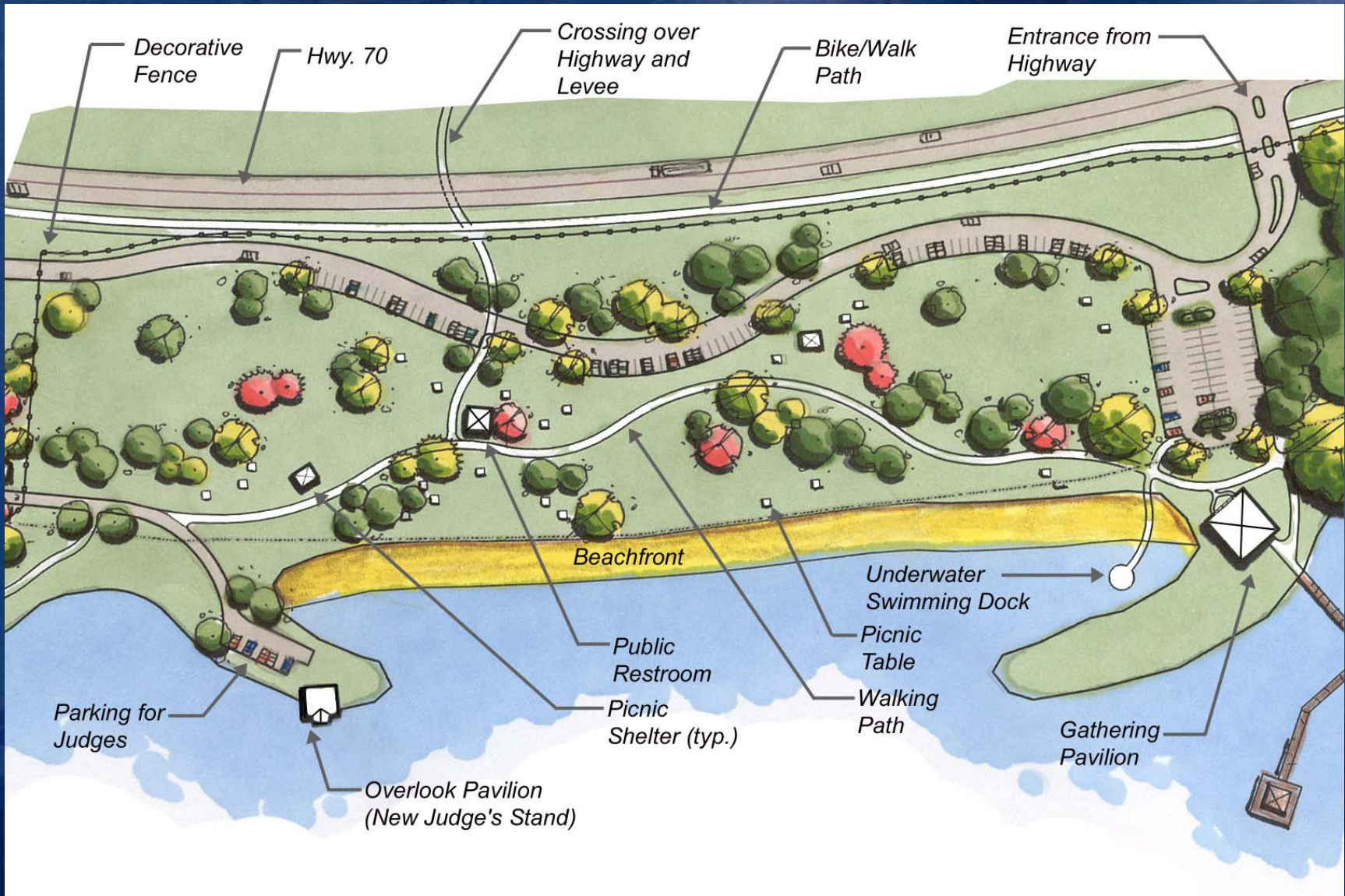


St. Mary

Boat Landing



Picnic Area



Fishing Pier / Nature Area



St. Mary

Atchafalaya Interpretive Center



St. Mary

Millet (Myette) Point Landing



St. Mary

Kemper-Williams Park



St. Mary



BAY COLONY
NAPLES, FLORIDA



TORREON GOLF CLUB
SHOWLOW, ARIZONA

Belle River Landing

Lower St. Martin



Bass Fingerlings

Lower St. Martin

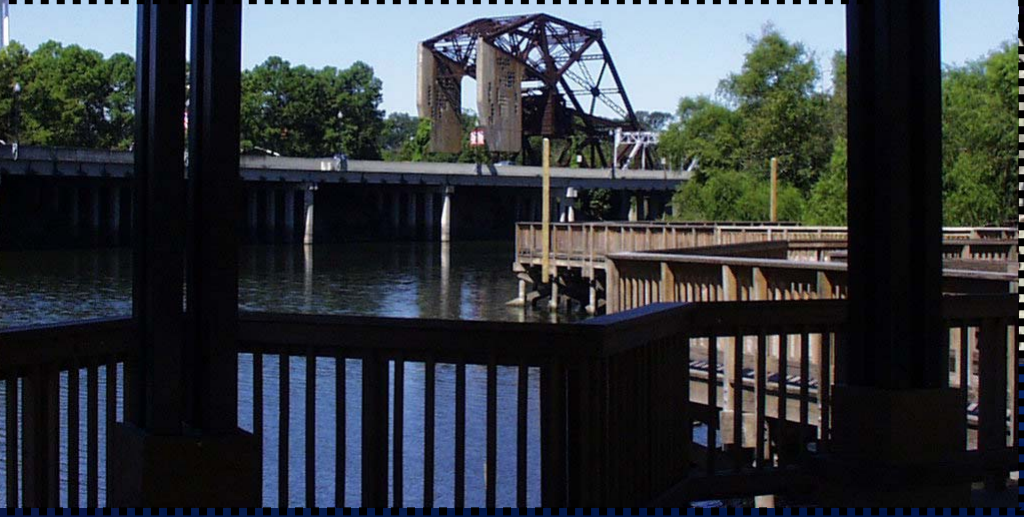


Attakapas Landing



Assumption

Bayou Plaquemine Park

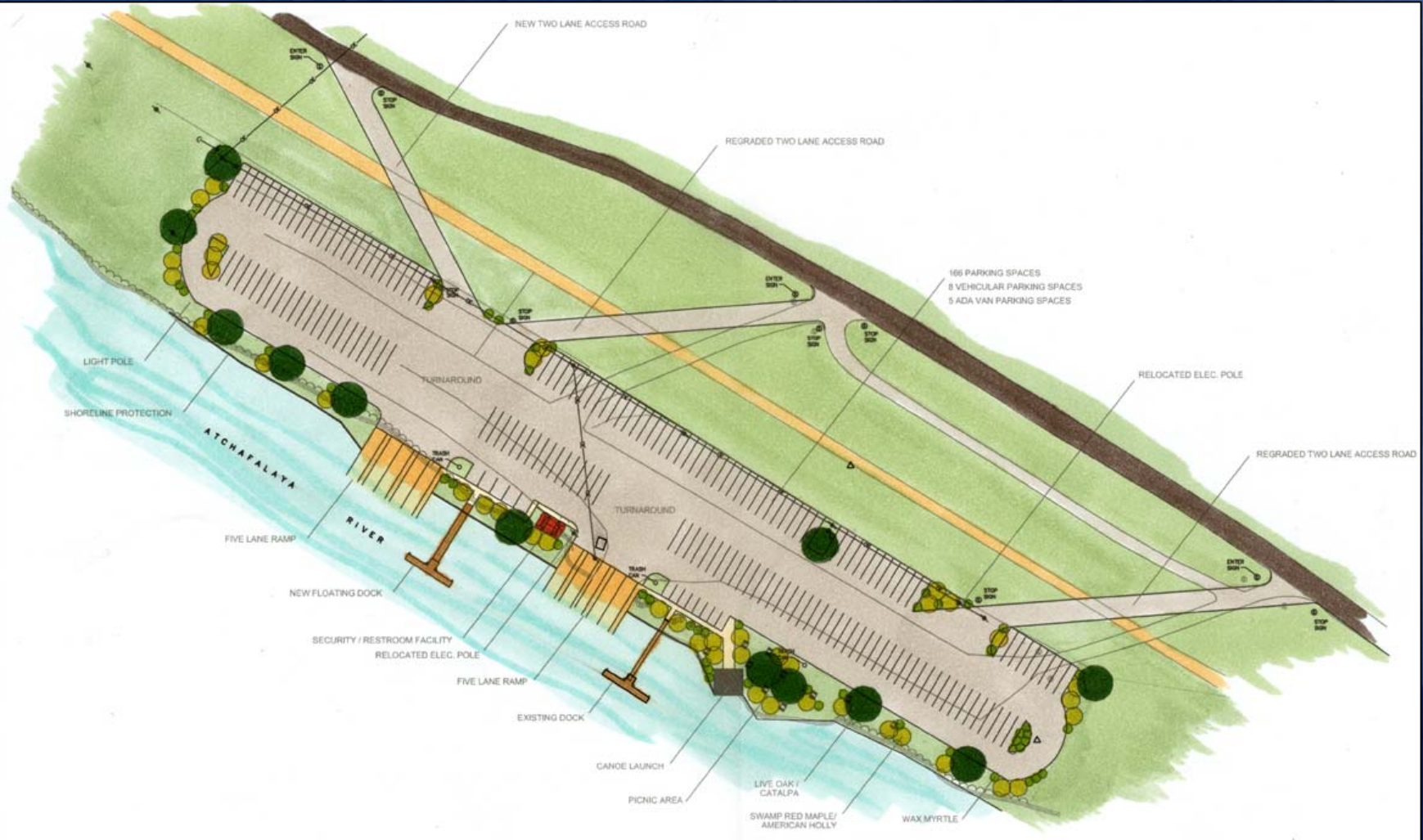


Iberville

Bayou Sorrel Landing



Bayou Pigeon Landing



False River / Fall Tour



P o i n t e C o u p p e e

Downtown Beautification



Avoyelles



Sarto Bridge Restoration



Avoyelles

BASIN

Sarto Bridge Restoration



Avoyelles



Opelousas Village



St. Landry



Opelousas Village



St. Laundry

Washington

St. Laundry



Bayou Courtableau Paddling Trails

Bayou Courtableau



Paddle Louisiana

Louisiana's greatest cultural and natural resource is the **Atchafalaya Basin**. At nearly a million acres, the Basin offers scenic adventure to paddlers of all ages and abilities. Bayou Courtableau, beginning at the extreme northwest corner of the Basin, offers short, scenic paddle trips, day-long paddles and soon, rest areas and overnight camping.

BayouTrails.org

Atchafalaya Water Trails

To get to Bayou Courtableau, take US 190 west from Krotz Springs or east from I-49 to the bridge that crosses the Bayou marked by Army Corps of Engineers signs. Turn off and drive south along the levee road until you see a private landing on your left. The fee for parking is two dollars. Paddle east into Bayou Courtableau, and follow it around 2.7 miles southwest to the mouth of Bayou Duquesne, N 30 30.513, W 091 50.368.

Follow Bayou Duquesne as it winds through a bottomland hardwood forest of Cypress and Tupelo Gum trees. You will cross a pipeline at N 3029.864 W 09150.560., and another at N 3029.438 W 0150.328. Continue from there to the four-way junction at the base of the Bayou Courtableau Outlet Channel, N 3028.178 W 0150.080. There Bayou Fardoche, a scenic and black-watered dead end, runs east, Bayou Mamselle continues south and the Outlet Channel leads west. Take the Outlet Channel back to within a few hundred yards of the put-in to make a loop trip.

1 mile

From the four-way intersection, paddle southeast about 1.1 miles until you pass under a power line at N 30 27.324, W 091 49.632. Follow the power line east for about 50 meters, and then turn south. Turn left at N 30 25.731, W 091 48.296. Straight leads into a group of channels often closed by floating Water Hyacinth or logjams. Continue on until you cross Lake Fardoche. From there, follow a winding bayou to the Dixie Pipeline crossing, at N 30 23.842, W 091 48.104

At the Dixie Pipeline, turn to the southwest and paddle about 1 mile to the levee to camp, or continue southeast along Bayou Fardoche until you come to Lake Henderson. At Lake Henderson, paddle directly south for around two miles to reach any of the landings along the levee in Henderson. Be careful: strong winds sometimes blow to the north across the lake and can slow your progress substantially.

Bayou Courtableau

Bald Cypress Seedling Planting



Marshfield Landing



Belle River Landing

A photograph of a swampy landscape. In the foreground, a narrow path or stream flows through dense, low-lying vegetation. The path leads towards a dense forest of tall, thin trees, likely cypresses, which are characteristic of a swamp. The sky is overcast and grey. The overall scene is a natural, somewhat desolate environment.

Gateways into the Atchafalaya

**Building a Recreational Infrastructure
for the Atchafalaya Basin Parishes**

Ramps

Berwick Boat Ramp



Landings

Brouillette Landing



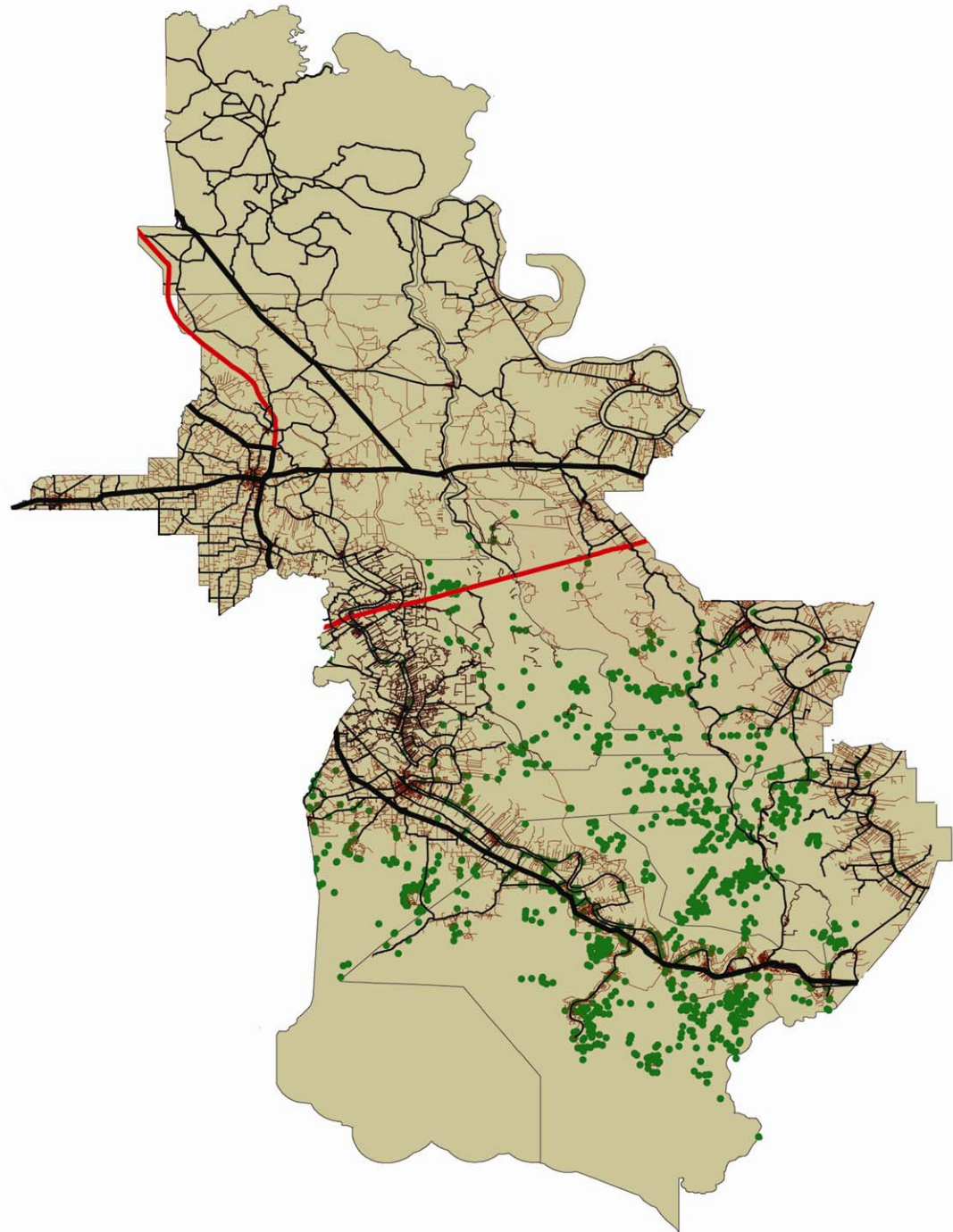
Belle River Landing

Landings are potential targets for design considerations. Research has shown that the strongest impact on visitor impression are the pathways to a destination and where the path ends (Kevin Lynch, *Image of a City*)

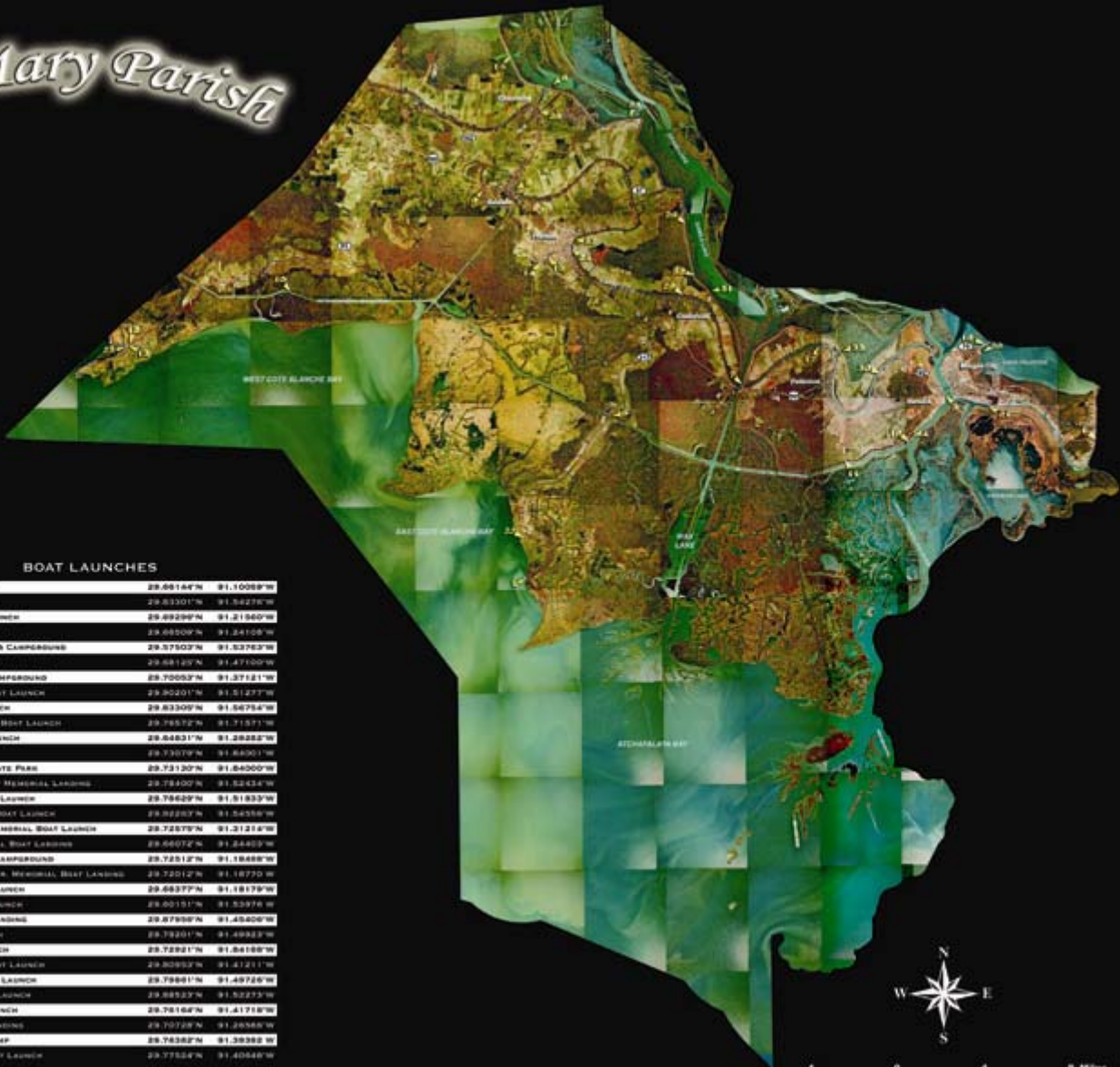


Roads and Pipecrossings

The Atchafalaya Basin has very limited road access. A comprehensive map locating the basin boat launches could aid engineers to find the nearest entry point to a break in a pipeline.



St. Mary Parish



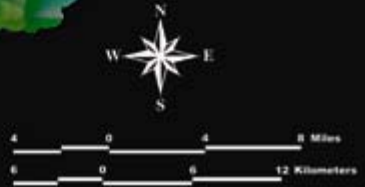
BOAT LAUNCHES

1	ARELLA BOAT LAUNCH	29.66164°N	91.10089°W
2	BALDWIN BOAT LAUNCH	29.83301°N	91.58278°W
3	BERNICK BAY BOAT LAUNCH	29.89299°N	91.21840°W
4	BERNICK BOAT RAMP	29.89509°N	91.24108°W
5	BURNS POINT LAUNCH & CAMPGROUND	29.57503°N	91.52783°W
6	CLAYTON BOAT LAUNCH	29.88129°N	91.47100°W
7	CALLUMET LAUNCH & CAMPGROUND	29.70053°N	91.37181°W
8	CHARLESTON BEACH BOAT LAUNCH	29.90201°N	91.51277°W
9	CHAMPAGNE BOAT LAUNCH	29.83309°N	91.68784°W
10	COLE BLANCH ISLAND BOAT LAUNCH	29.78512°N	91.71571°W
11	COTTEN ROAD BOAT LAUNCH	29.84831°N	91.28882°W
12	COLE MARINA	29.73079°N	91.68017°W
13	CORRENTY POINT STATE PARK	29.73120°N	91.84000°W
14	FRANK FOSTER BOLEY MEMORIAL LAUNCH	29.78409°N	91.82434°W
15	FRANKLIN CANAL BOAT LAUNCH	29.78620°N	91.51833°W
16	GRAND AVOCILE COLE BOAT LAUNCH	29.82283°N	91.54358°W
17	JESSE B. HAYES JR. MEMORIAL BOAT LAUNCH	29.72870°N	91.21218°W
18	JOE C. FURBER MEMORIAL BOAT LAUNCH	29.66072°N	91.24402°W
19	LAKE END RV PARK & CAMPGROUND	29.72812°N	91.18488°W
20	LAWRENCE J. MICHEL JR. MEMORIAL BOAT LAUNCH	29.72012°N	91.18770°W
21	LAKE LAURENS BOAT LAUNCH	29.68377°N	91.18179°W
22	MYRTLE POINT BOAT LAUNCH	29.60191°N	91.53976°W
23	PALM SPRING LA-TECHÉ LAUNCH	29.87988°N	91.45408°W
24	QUINTANA BOAT LAUNCH	29.79201°N	91.49933°W
25	ROCK WEIR BOAT LAUNCH	29.72921°N	91.86188°W
26	ROSEVILLE STREET BOAT LAUNCH	29.80952°N	91.41211°W
27	SAKARAN STREET BOAT LAUNCH	29.79881°N	91.48726°W
28	ROCKAWAY PARK & BOAT LAUNCH	29.88212°N	91.52273°W
29	TWO SISTERS BOAT LAUNCH	29.78168°N	91.41718°W
30	VERNONVILLE BOAT LAUNCH	29.70728°N	91.29568°W
31	VERNONVILLE BOAT RAMP	29.74382°N	91.38982°W
32	WOLAN'S LAUNCH BOAT LAUNCH	29.77524°N	91.40848°W

Map prepared by Bureau of Land Management, Resource Assessment Division, St. Mary Parish, Louisiana. 2008.

Map content data was collected and compiled by Bureau of Land Management, Resource Assessment Division, St. Mary Parish, Louisiana. 2008. Boat Launch Locations, Camp Grounds, Parks, and Recreation Areas Program.

Original Orthophoto Imagery (Aerial Photography) (2002) was collected from the National Aerial Photography Program. The imagery was processed for use in this map. The imagery was collected in 2002 under the Department of the Interior's Boat Launching Program.



Louisiana Rural Tourism Conference

Atchafalaya
BASIN