



LSU

Louisiana

Ag Ed News

Summer 2009 Volume 3, Issue 2

Team Ag Ed How Time Flies

That's Country Music Ponchatoula FFA

CDE Winners State FFA

Feature Program Grand Lake—SAE Summer Visits

FFA Construction Live Oak



LSU AG RESIDENTIAL COLLEGE PILOTS ANIMAL-ASSISTED THERAPY PROGRAM

Many professionals in the field of health care believe that animals can play an important role in therapy for patients with various medical conditions.

Students in the LSU College of Agriculture's Residential College program had a chance to witness the practice first hand, as they took part in a pilot program offering animal-assisted therapy — or AAT — to area medical facilities.

Six students recently completed training to take part in the program, which culminated March 30 with a second visit to Ollie Steele Burden Manor, a Baton Rouge long-term care center and an affiliate of the Our Lady of the Lake system.



“The students and the residents loved it,” said Cathleen Williams, Gerald A. Simmons Professor of Dairy Science with the LSU School of Animal Sciences and director of the LSU Ag Residential College program. “The visits went very well. Some of the residents remembered us from our first visit.”

AAT is a goal-directed intervention in which an animal — in this instance, a dog — is used as an integral part of the medical treatment process. AAT has been used to establish a human-animal bond and promote good health and the recovery of illness and some diseases. First documented in 1962, some of the benefits of AAT have been found in educational, physical, cognitive and psychological

Continued on page 8

HOW TIME FLIES!

Bradley A. Leger, Ph.D. and Hals B. Beard, Agriscience Education Program Specialists



It seems that, in the blink of an eye, another school term has come and gone! In the hustle and bustle of activity, it seems that we never have enough time to complete all of our goals. Yet, through it all, with the help of local advisory councils, Louisiana Team Ag Ed, FFA Alumni, Parent/Booster Clubs, and dedicated agricultural education professionals, we've gotten through another fruitful, enjoyable year. We are now shifting into the summertime gear as we prepare for FFA Convention, training, conferences, more SAE visits, camps, and, yes, some well-deserved rest and relaxation.

It has indeed been a busy spring with exit exams, livestock shows, award/degree applications, and career development events! We have also been working very diligently with local school systems in establishing new programs and nurturing the new ones. Several weeks ago, we once again had the extreme pleasure of hosting a delegation from the Pennsylvania State University College of Agriculture which came down during its spring break. This enthusiastic group of individuals worked on projects at the Iberville Parish Math Science and Arts Academy in Plaquemine (one of our programs which will start up next year) and the Orleans Parish P.M. School's agriscience program. It once again reminded us how proud we were to be members of the Agricultural Education Family. Amidst all of these activities, we have still been making a number of school visits (with teachers and administrators), attending FFA Banquets, and meeting with our **Team Ag Ed** Partners in planning and executing the tasks indicated by the 3 major issues of our **Strategic Plan**:

ISSUE #1: 2-Year Agriculture Programs (2 + 2 + 2)

ISSUE #2: Curriculum Development

ISSUE #3: Quality Teacher Preparation

In cooperation with the LATA, we are once again preparing a teacher recruitment display at the State FFA Convention Career Show which proved to be a real crowd-pleaser last year! Speaking of State FFA Convention, by now you should have received a message about Administrators' Day at State FFA Convention. Please help to spread the word to your local school administrators so that we'll have a good showing and share the good news of agricultural education.

Of course, we're planning for **LATA Conference and Inservice** which will be held July 22-24 at the Paragon Resort and Casino in Marksville. We promise that we'll have an array of interesting and useful workshops to choose from.

As always, we are always available for assistance and look forward to seeing all of you at our upcoming summer activities.



FFA CONSTRUCTION PROJECT

Billy Doiron, Agriscience Teacher, Live Oak High School

The following pictures showcase the cover-walk that the Ag Carpentry class at Live Oak High built for the school under the supervision of Ag Instructor Billy Doiron. The students completed the entire project from setting posts to sheeting with tin. A similar job was completed last year and a new one is being planned to be constructed next year.



COMMUNICATING WITH LIFEKNOWLEDGE

Curt Friedel, LSU Agricultural Education

One of the hottest growing fields in agriculture is agricultural communications. It seems there is high demand for journalists who understand agricultural production and processing systems.

As we move into the informational revolution, there is a need for competent individuals to communicate how sustainable agriculture contributes the food, fiber, and fuel needed for our quality of life. Actually, why should we limit this skill set to only our agricultural journalists. All of our students should be able to communicate this message.

These LifeKnowledge lesson plans work well to teach concepts related to agricultural communications.

MS-44 Getting Your Message Understood

HS-50 Communicating with Customers

HS-84 The Need for Communication to Influence Others

HS-89 Conducting One-on-one Visits

AHS-36 Learning to Teach Others

AHS-40 Becoming an Advocate for Agriculture and Natural Resources

PONCHATOULA FFA SPONSORS COUNTRY RECORDING ARTIST SCF BUCKLEY AND SERGEANT FOLCO

Caroline Stevens, Ponchatoula FFA

On January 30 & 31, Ponchatoula High School welcomed two very special guests. Sergeant First Class Jamie Buckley and Sergeant John Folco visited Ponchatoula for a time of recruitment and fun.



They were invited guests of our school's FFA Chapter. SCF Buckley is not only an Army Recruiter, but a country recording artist, as well. SFC Buckley spoke to over 200 Agriscience

students on January 30th about the US Army and Sergeant Folco spoke to band students on the same topic. The students thoroughly enjoyed listening to what both of these gentlemen had to say.

We learned how they first became involved in the Army, what they have benefited, and so much more. They spoke motivationally about not only the Army, but about students doing their best and choosing to do right in all aspects of life. As SFC Buckley mentioned, not everyone will join the Army, but there may be a family member or friend that may need the information relayed to them. There was so much information that many students did not know, and now look at the Army in such a different perspective.

On January 31st, we were fortunate enough to have SFC Buckley perform a concert, courtesy of the U.S. Army and sponsored by the Ponchatoula FFA, which was open to all Ponchatoula High students, friends, and guests. The concert was a great success and all who attended were inspired and had great time. Ponchatoula High School and FFA Chapter were honored and excited about the presence of these two inspiring men and hope to see them in our area again.

**2009 AGRISCIENCE TEACHERS ASSOCIATION
PROFESSIONAL DEVELOPMENT CONFERENCE
TENTATIVE SCHEDULE**

Tuesday, July 21, 2009

5:00 PM LATA Executive Committee meeting

Wednesday, July 22, 2009

8:00 AM—Noon Workshops
 Noon—2:00 PM Lunch
 Noon—3:00 PM Registration and Committee meetings
 3:00—5:00 PM Opening Business Session
 7:00 PM until Dinner

Thursday, July 23, 2009

8:00 AM—11:30 AM Professional Development Session I:
 11:30 AM—1:00 PM Lunch
 1:00 PM – 4:30 PM Professional Development Session II:
 7:00—10:00 PM Awards Banquet/Scholarship Auction

Friday, July 24, 2009

8:30—10:30 AM Closing Business Session:



EVENTS CALENDAR

June 14-17 NAAE Region II Conference; Canyon, TX

June 29—July 2 Area IV Leadership Camp; Bunkie

July 6-9 Area I & II Leadership Camp; Bunkie

July 13-16 Area III Leadership Camp; Bunkie

July 22-24 LATA Conference; Marksville

July 27-31 Super Summer Institute

July 27-30 LACTE Conference; Lafayette

August 20 National Convention Housing Block list due.

September 26-27 MFE/ Collegiate Conference; TBA

Want to Contribute?

The News is published and distributed four times a year. If you have information that you would like to have published, please submit it to:

Dr. Curt Friedel

School of Human Resource Education
 & Workforce Development
 Louisiana State University
 142 Old Forestry Building
 Baton Rouge, LA 70803
 Phone (225) 578-2108
 Fax (225) 578-5755
cfriedel@lsu.edu

Louisiana Ag Ed News is your newsletter! Please use it to share information with your agricultural education colleagues across Louisiana.

Issues are archived at:
www.lsu.edu/hrleader/aeeyd/AgEdNewsletter.htm

FOCUS ON...

GRAND LAKE—SAE SUMMER HOME VISITS: A SMALL INVESTMENT WITH HUGE DIVIDENDS

Scotty Poole, Agriscience Teacher, Grand Lake High School

The month of May is always a hectic time of year for me. While most teachers are winding down, it seems that this is the time of year when I become the busiest. I have the annual FFA awards banquet and shop inventory before the end of the school year. As soon as school is out, it's time for the FFA state convention, followed by summer leadership camp and Super Summer Institute. There's hardly any time left in the summer to be a "Dad" and "Husband," and I'm still expected to make SAE home visits?

Sound familiar? It's just another day in the life of an Ag teacher. We are all looking for ways to simplify our lives, especially during the summer months. However, neglecting our SAE summer home visits is not the answer. SAE's are an important part of our agriculture programs, not just September through May, but throughout the entire year.

There are several ways to incorporate SAE summer home visits into your schedule without causing you or your students too much stress! The following are merely suggestions of what I have tried over the past few years. Feel free to beg, steal, or borrow any that might work for you!



Officer Team Home Visits

Before school ends, have an officer's meeting with your newly elected officers and schedule home visits.

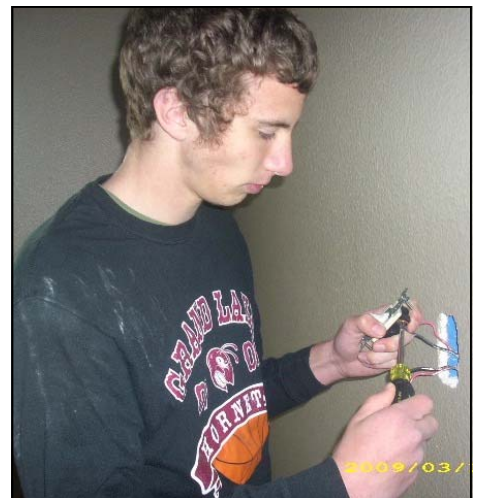


I let each officer choose a week during the summer that they will "host" an **Officer SAE Tour**. During my visit, I video tape the officer explaining and/or demonstrating their SAE. The videos are used during my Agriscience I classes the following year. Our officers are held to a higher standard as role models for our younger members. Knowing that the videos will be used as part of my instruction motivates them to give 100% on their SAE's to make them the best that

they can be, as well as builds a sense of responsibility in the officer team.

SAE Open House

Have an **SAE Open House** week during the summer. Have your officers plan the event to take some of the responsibility off of you. They are to schedule two to three visits each day at other student's homes. The officer team takes the "SAE Open House



Continued on next page

Tour” with you as you visit each of the member’s homes. Be sure to bring your camera with you to take pictures. I use the pictures to display on the FFA bulletin board for the first days of school of our summer activities. The pictures are also great to use for Open House Night at school, early in the school year.

Bring A Friend/Alumni/Advisory Board/ Administrator

If you want to truly show the worth of your program, invite an Advisory Board member, an FFA Alumni member, or a school administrator to make an SAE summer home visit with you. Most are still not aware



that we are 12 month employees and are working throughout the summer. After one of these individuals sees first hand the work we do as agriculture teachers, and the responsibilities that our students have throughout the year, they are much more likely to “go to bat” for you and your program when a need arises.



Helpful Hints

- Don’t forget your camera!
- Have the student “teach” you about their SAE. Let them be the “expert.”
- Use the visit as an opportunity to “guide” them on the right tack and offer suggestions on how to “grow” their SAE throughout the coming year.
- Keep the visit short and light. Both you and the student should look forward to your visit.
- Take the opportunity to build working relationships with their parents or employers. (Ask if they would like to join your FFA Alumni!)
- The bond you will establish and/or strengthen with your students is amazing. I **PROMISE** that there is not another teacher in your school asking to visit them during the summer!



As agriculture teachers, we have an opportunity and a responsibility to **make a positive difference in the lives of young people by developing their potential for premiere leadership, personal growth and career success through agricultural education.** Make SAE summer home visits part of your summer work schedule and reap the rewards throughout the coming years.

ANIMAL-ASSISTED THERAPY PROGRAM *Continued from page 1*

rehabilitations. It is used in operating rooms, intensive care units, pediatric centers and with psychiatric patients, particularly those diagnosed with dementia and Alzheimer's disease. AAT has been found to decrease blood pressure during stressful activities in older hypertensive patients, to provide psychological benefits for children diagnosed with autism by helping to increase social behavior, as has been used in the rehabilitation of inmates.

The idea to institute the program within the LSU College of Agriculture's Residential College came when Williams and Betsy Garrison, associate dean of the LSU College of Agriculture, wanted to create a signature activity for the residential college, a two-year "mini-campus" atmosphere offered to first-year students majoring in fields of study within the LSU College of Agriculture.

"Many of these students want to be veterinarians," Garrison said. "A program such as this gets them involved with how animals can help people."

Williams said that while the program was aimed at pre-veterinary students, any student within the Ag Residential College could take part.

While students showed interest in the project, Williams said, they still needed to be paired with dogs, which presented a problem.

"It was difficult because since the students live in a residence hall, they couldn't have their own dogs there," Williams said. "So, some of our faculty and staff volunteered our own dogs to take part. The good thing is that after the students complete the training and move out of the residential college, they'll be able to train their own dogs and continue the program."

Williams said that Jennifer Laborde, her teaching assistant and a recent master's graduate of LSU, took charge of the project after Williams asked her to organize contacts and schedule courses with the LSU School of Veterinary Medicine's Tiger HATS animal therapy program, headed by Diane Sylvester. "She is a godsend," Williams said of Laborde. "She volunteered a lot of her time and effort to get this program up and running. Some of the dogs in the program are hers. It took her a semester to get all of the contacts lined up for the program. She's put a lot of work into this."

In January, an information session was held to inform students about the program. Topics included an introduction to AAT programs, selection of students and dogs and student involvement in the program. Interested students then filled out applications and questionnaires that were used in the selection process.

The initial group of participants consists of six carefully selected students, Williams said. Criteria included completion of an application and questionnaire, a minimum grade-point average of 3.25, reliability and compassion for animals and people.

While six students were chosen in the pilot program, hopes are that the total could expand to as many as 20 students in the future, Garrison said. Students, if they choose, may also register with the Delta Society at a cost of \$75. However, registration is not required.



According to information on its Web site, the Delta Society is an organization dedicated to improving human health through therapy and service animals by working to increase awareness of the positive effects of animals, reduce the barriers that prevent the involvement of animals in everyday life and expand the therapeutic and service role of animals in health, service and education.

The LSU program — which follows the Delta Society's requirements — covers steps for training, evaluation and the types of dogs. Training included twice-a-week, two-hour period classes taught by Sylvester, who is certified by the Delta Society to train in animal-assisted therapy. Topics covered pertained to preparing the animals for visits, identifying and decreasing stress in the animals, animal health and safety, special needs of patients, interacting with people, facility health and safety codes and patient confidentiality.

Evaluations also tested the handler and animal working as a team. These tests included the ability of the handler student to control the dog and the dog's behavioral skills and simulating conditions that may occur during the visit and interaction with the evaluator.

As required by the Delta Society and health facilities, the dogs had to pass a physical exam, be current on vaccinations and be free of internal and external parasites.

Williams — who also earned certification through the Delta Society for the program — said goals include increasing the number of student participants, possibly lengthening the program to a full academic year and increasing awareness of the program.

“This has been an excellent educational opportunity for the students, in terms of a service they can do for the community with their animals as well as interacting with the residents,” Williams said. “Many of them have never been in a facility such as that, so it helps them to better relate to people in those situations.”

Garrison said student evaluations taken at the completion of the program will assist in improvement for future years.

Williams said that while the LSU AAT class will continue to visit Ollie Steele Burden Manor, there are other long-term care centers and hospitals in the area they could possibly visit in the future.

For more information on the animal-assisted therapy program at LSU, contact Williams at 225-578-4574 or at cwilliams@agcenter.lsu.edu.

For more information on the Delta Society, visit www.deltasociety.org.

For more information on the LSU Ag Residential College, visit the LSU Residential Life Web site at <http://appl003.lsu.edu/slas/reslifeweb.nsf/index>.

For more information on the LSU College of Agriculture, visit www.coa.lsu.edu.

Article taken from LSU Highlights April 2009 Archives

Written by: Aaron Looney—Office of Communications & University Relations



PONCHATOULA FFA MEMBERS GO TO CHICAGO

Courtney Hebert & Dustin Williams, Ponchatoula FFA

On April 16th, 2009, students: Courtney Hebert, Baylor Lansden, Kadie Sewell, Nicole Frazier, Danielle Gills, Bradley Coleman, Tess Morse, Paige Louque, Kendra Keen, Jessica Wagoner, Sara Torres, and Dustin Williams of The Ponchatoula FFA Chapter set out for an adventure to Chicago, Illinois.

While in Chicago, the students of the Ponchatoula FFA Chapter visited the Chicago High School of Agrisculture Sciences to learn about the diversity of studying agriculture in an urban setting. The faculty and students were welcoming to the students as we took a tour of the school. When we arrived at the school, the officer team of the CHSAS came up with a really cool “icebreaker” that better acquainted the Chicago students and the Ponchatoula students. After the “icebreaker” the Chicago students presented us a workshop on teamwork. The workshop consisted of meeting three challenges in order to accomplish team goals while learning to work together.

After the workshop, we were divided into different groups to further explore the different career-pathways offered at CHSAS with a few students in that particular career path-way. As the students from Ponchatoula became better acquainted with their Chicago peers, both schools learned that diversity and appreciating each others differences is a vital part of life.

The students of the Ponchatoula FFA Chapter also got to take in some unique experiences while sight-seeing and learning about a little history of Chicago. The students experienced a different lifestyle with different activities, shopping centers, and also a change in restaurants. The longer we stayed in Chicago and the longer we observed landmarks and people, we quickly learned the little things that make everyone diverse and also witnessed the unique diversity that filled the air.

On the final day of the trip we visited the Chicago Museum of Science and Industry. At the museum we learned about the technological advances toward the future of agriculture and many other fields of science. This was a great learning experience to see the different ways objects were built and/or discovered and how industries are moving forwards.

The Chicago “Discovering Diversity” trip for the Ponchatoula FFA Chapter was a great success and all of the students came back to Louisiana, with a great deal of knowledge to share with our family and friends.



Knowledge is of two kinds. We know a subject ourselves, or we know where we can find information upon it.

-Samuel Johnson

LOUISIANA STATE CDE WINNERS

The following is the list of winning FFA members at the FFA State Career Development Events held at Louisiana State University:

Livestock Evaluation:

Elton

Taryn McSpadden, Joel Byrne,
Phillip Durio, Hobie Landry



Dairy Cattle Evaluation:

Springfield-Blue

Ashley Gregoire, Virginia Stevenson,
Jennifer Sanchez, Whitney Paille

Dairy Foods:

Beau Chene-Blue

Torey Quebedeaux, Ian Herpin,
Beau Mistrol, Seth Stelly



Poultry Evaluation:

Springfield-Blue

Daniel Sykes, Hillary Clark,
Lizz Oneal, Summer Barnum



Meats Evaluation & Tech:

Thibodaux

Josh McCarthy, Paige Quebedeaux,
Brandi Folse, Chase Grainer



Floriculture:

Calvin-Blue

Danny Howell, Shane Brooks,
Jimmy Brock, Josh Keiffer



Nursery/Landscape:

Calvin-Blue

Drew Howell, Samantha Cotton,
Alexis Sampry, Tiffany Burke

Tiger Award Winners:

Calvin FFA
Elton FFA
Ruston FFA
Springfield FFA
Thibodaux FFA





**School of Human Resource
Education & Workforce
Development**

142 Old Forestry Building
Louisiana State University
Baton Rouge, LA 70803

AG ED NOTES FROM AROUND THE STATE

**Congratulations to the following student winners of the
State Agriscience Literary Rally held at LSU:**



Agriscience I:

Nick Adams—Central Lafourche High School

Agriscience II:

Dane Adams—Central Lafourche High School

Agriscience III:

Nick Calames—Ponchatoula High School

Agriscience IV:

Cody Quebedeaux—Thibodaux High School