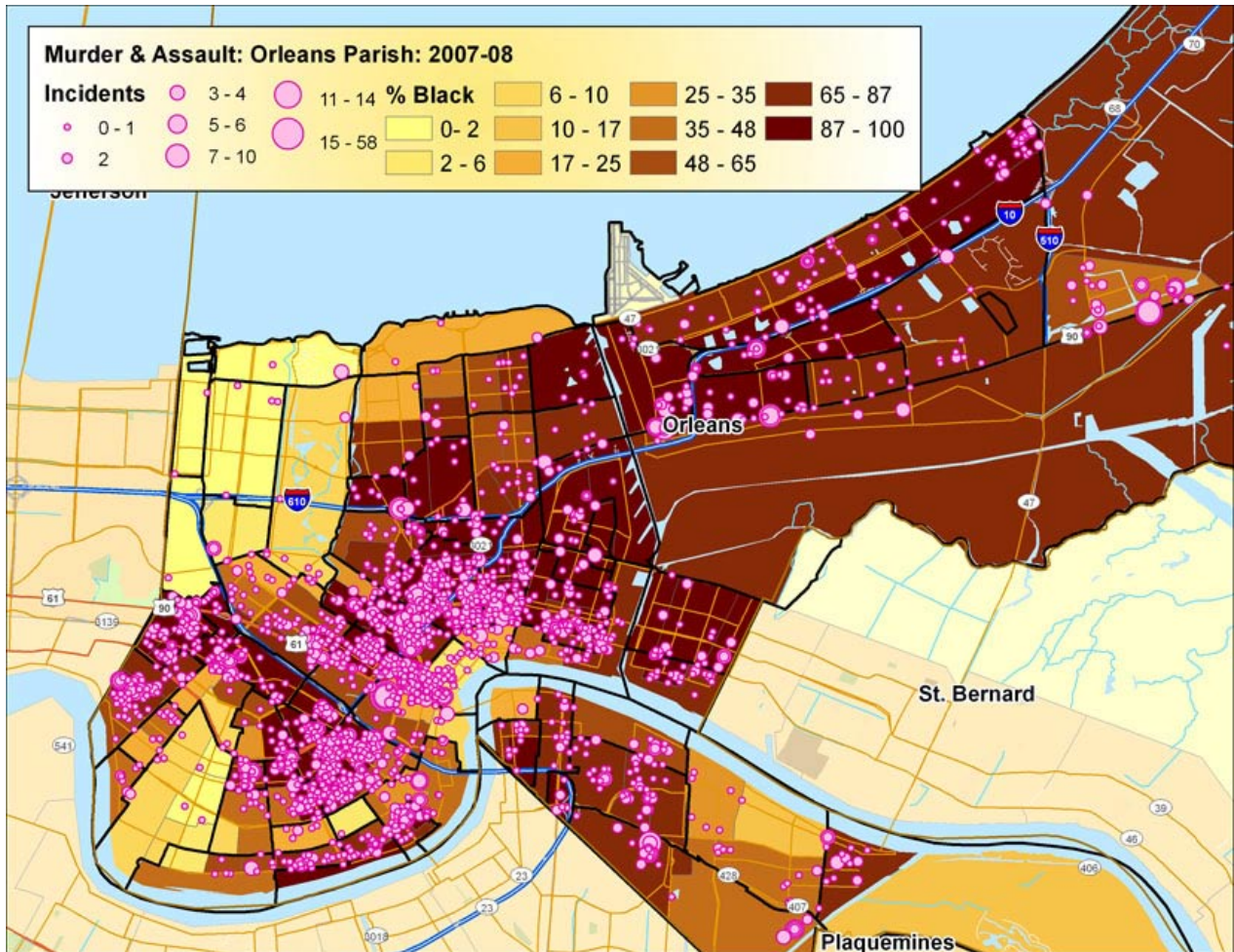


Effects of Various Factors on Violent Crime (combined murder & assault) in New Orleans Neighborhoods, 2008-09 – Broken down by Race – **ver. 2a w Maps**
(NBHs reclassified by race according to 2000 census. Central Business District excluded as outlier.)

Crime & Race: Crime is concentrated in predominantly black neighborhoods

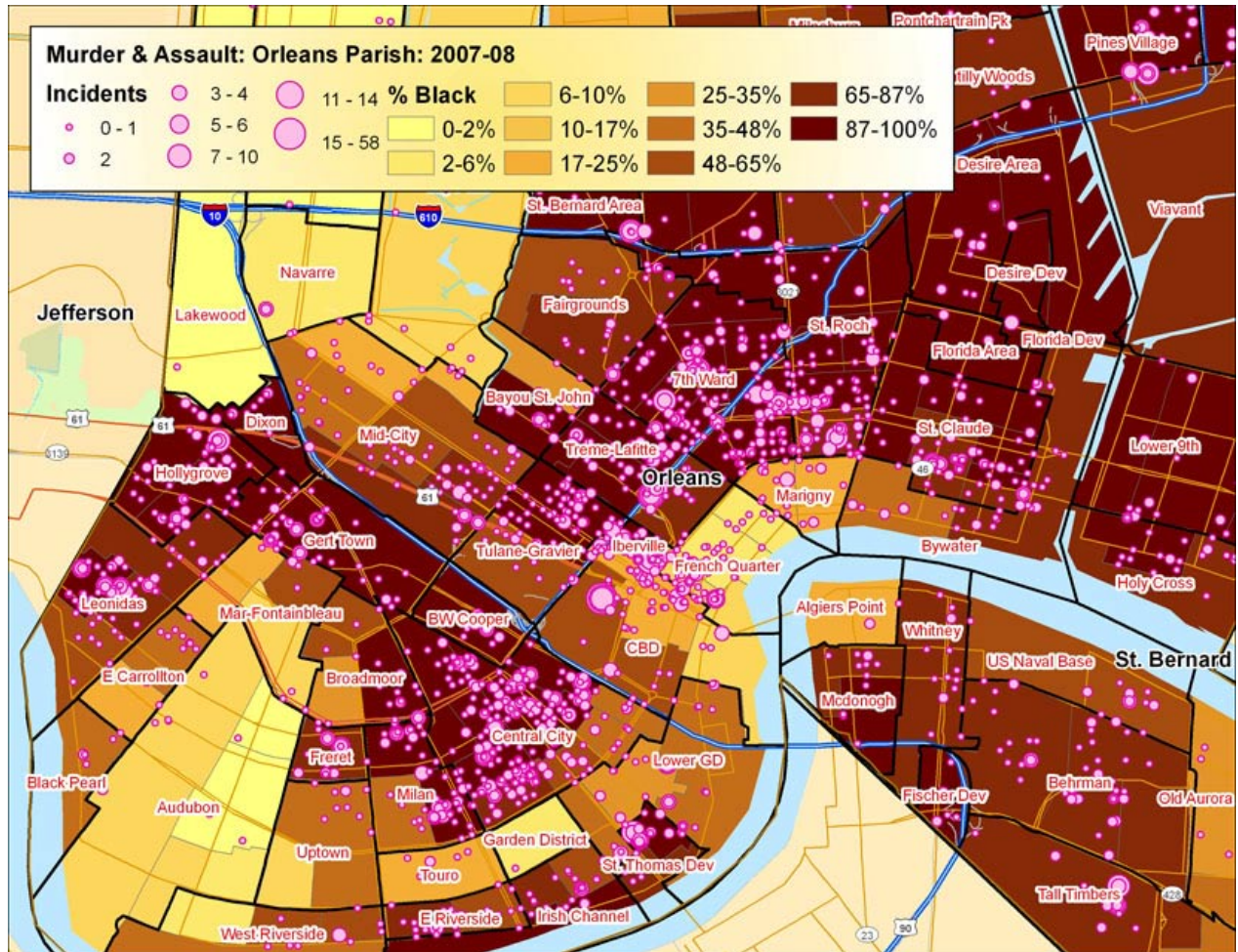
- Orleans Parish



Effects of Various Factors on Violent Crime (combined murder & assault) in New Orleans Neighborhoods, 2008-09 – Broken down by Race – **ver. 2a w Maps** (NBHs reclassified by race according to 2000 census. Central Business District excluded as outlier.)

Crime & Race: Crime is concentrated in predominantly black neighborhoods

- Central crime areas



Effects of Various Factors on Violent Crime (combined murder & assault) in New Orleans Neighborhoods, 2008-09 – Broken down by Race – **ver. 2a w Maps** (NBHs reclassified by race according to 2000 census. Central Business District excluded as outlier.)

What factors reduce Violent Crime?

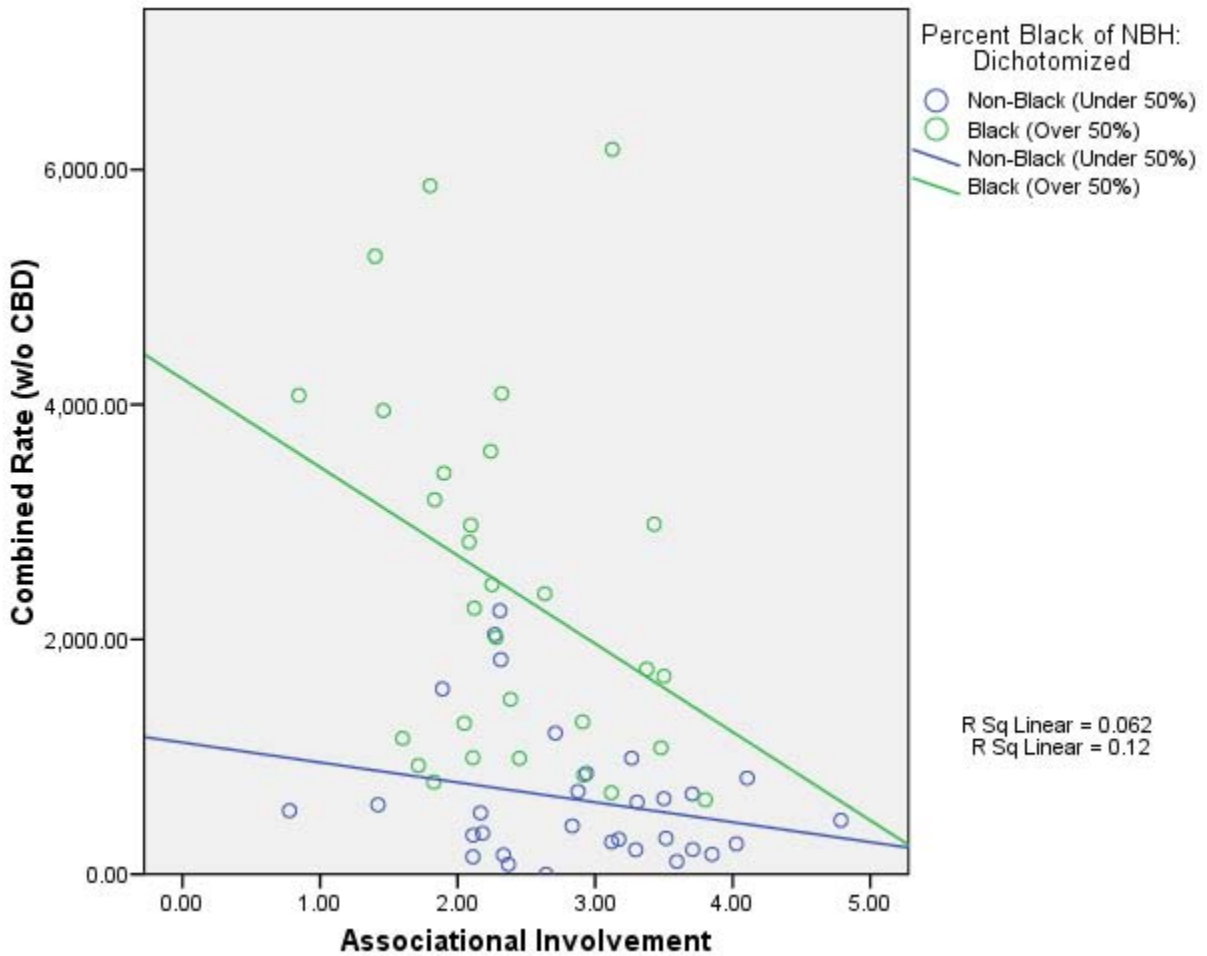
Factors Influencing Violent Crime in New Orleans, 2007-2008
Correlations
Survey Data (N = 2,648) & Police Reports,
Aggregated to Neighborhood Level (N = 62)

	<u>Combined Rate of Violent Crime</u>		
	All	White	Black
<u>Social Capital</u>			
<i>Networks</i>			
Associational Involvement	-.408**	-.249	-.399*
Informal Socializing	-.035	-.059	.200
Civic Leadership	-.363**	-.184	-.294
<i>Trust</i>			
Social Trust	-.568**	-.568**	-.344
Inter-Racial Trust	-.194	-.024	.128
<i>Faith-Based</i>			
Church Membership	-.321*	-.404*	-.661**
Faith-Based Engagement	-.130	-.302	-.566**
<u>Demographic</u>			
<i>Status</i>			
Education	-.636**	-.216	-.461**
Income	-.604**	-.349	-.512**
Unemployed Now	.519**	.179	.432*
<i>Family</i>			
Married with Children	-.588**	-.454*	-.636**

Effects of Various Factors on Violent Crime (combined murder & assault) in New Orleans Neighborhoods, 2008-09 – Broken down by Race – **ver. 2a w Maps** (NBHs reclassified by race according to 2000 census. Central Business District excluded as outlier.)

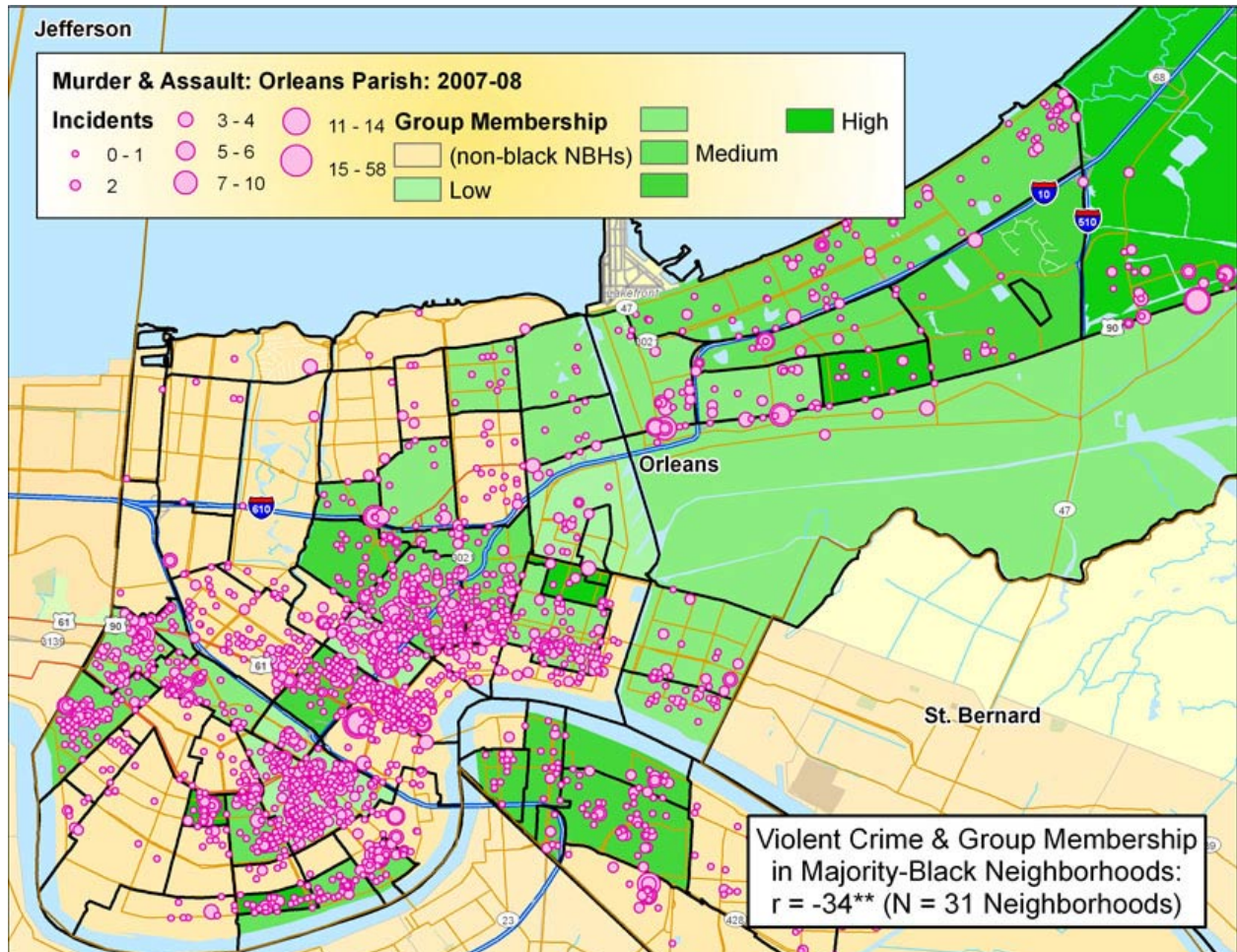
Social Capital – Associational Involvement

- Has a large effect on reducing violent crime in black neighborhoods
- Has little effect in white neighborhoods, where there is much less violent crime to begin with



Effects of Various Factors on Violent Crime (combined murder & assault) in New Orleans Neighborhoods, 2008-09 – Broken down by Race – **ver. 2a w Maps** (NBHs reclassified by race according to 2000 census. Central Business District excluded as outlier.)

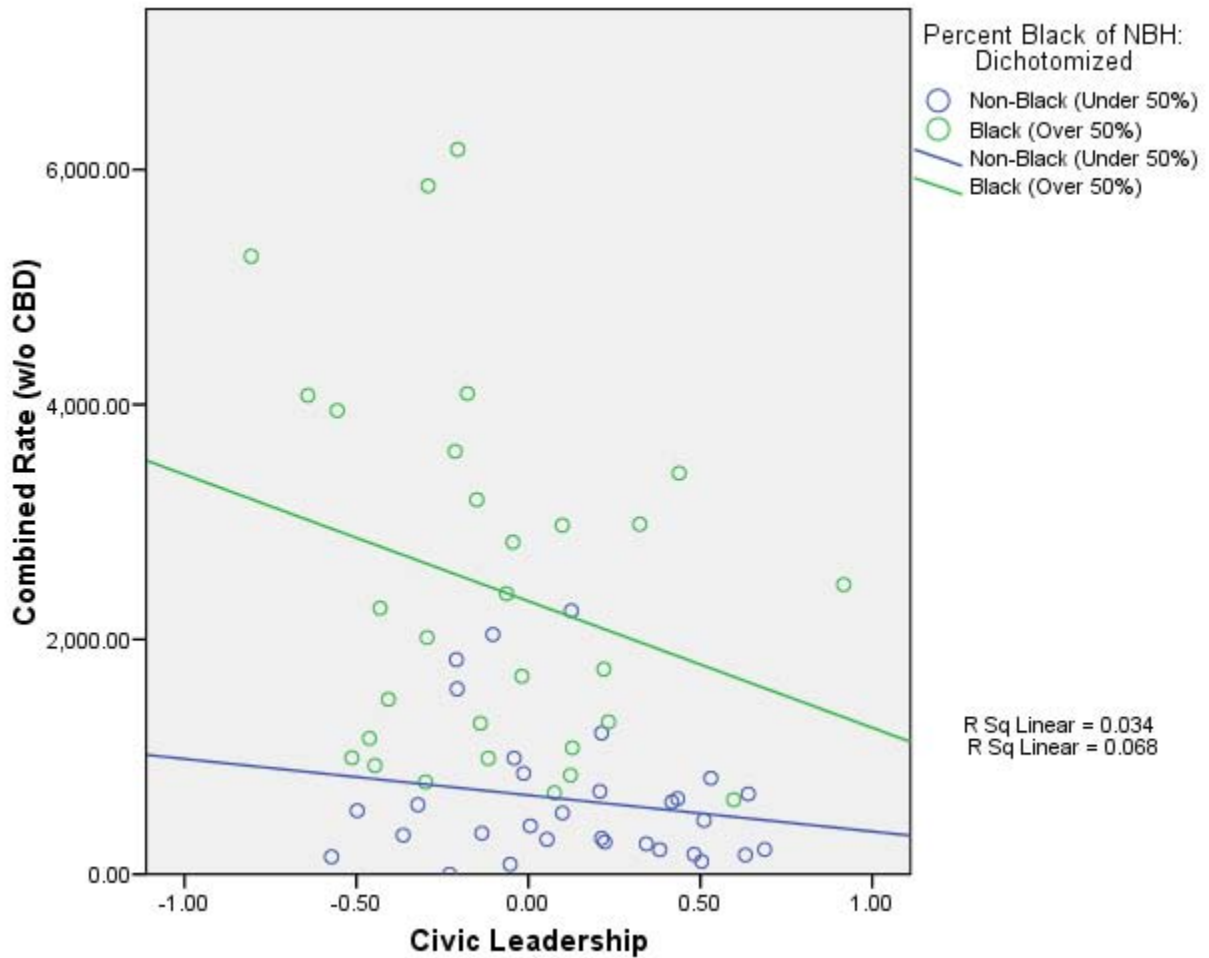
Social Capital – *Associational Involvement* in predominantly black neighborhoods



Effects of Various Factors on Violent Crime (combined murder & assault) in New Orleans Neighborhoods, 2008-09 – Broken down by Race – ver. 2a w Maps (NBHs reclassified by race according to 2000 census. Central Business District excluded as outlier.)

Social Capital – Civic Leadership

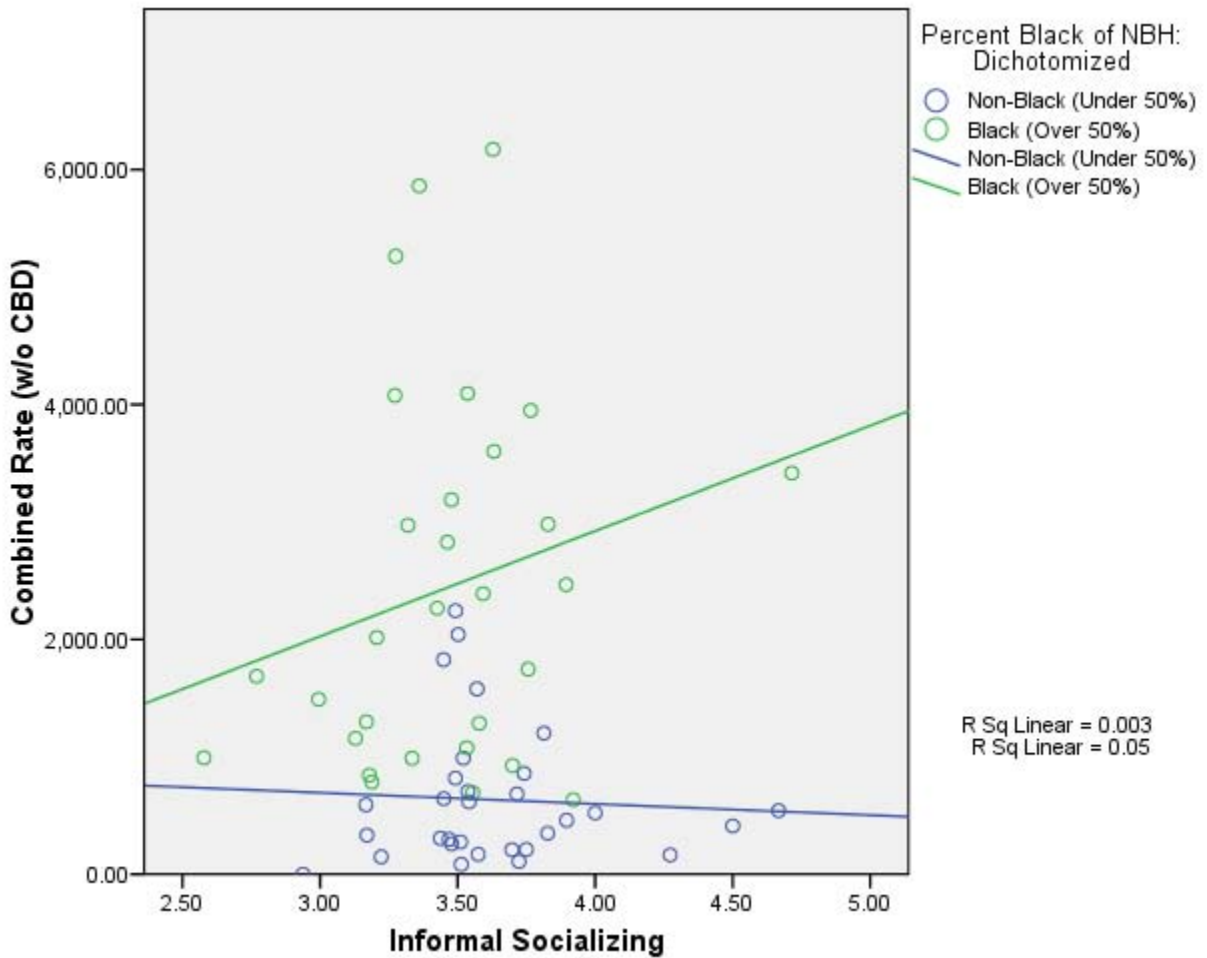
- Has a moderate effect on reducing violent crime in black neighborhoods
- Has little effect in white neighborhoods, where there is less violent crime to begin with



Effects of Various Factors on Violent Crime (combined murder & assault) in New Orleans Neighborhoods, 2008-09 – Broken down by Race – **ver. 2a w Maps** (NBHs reclassified by race according to 2000 census. Central Business District excluded as outlier.)

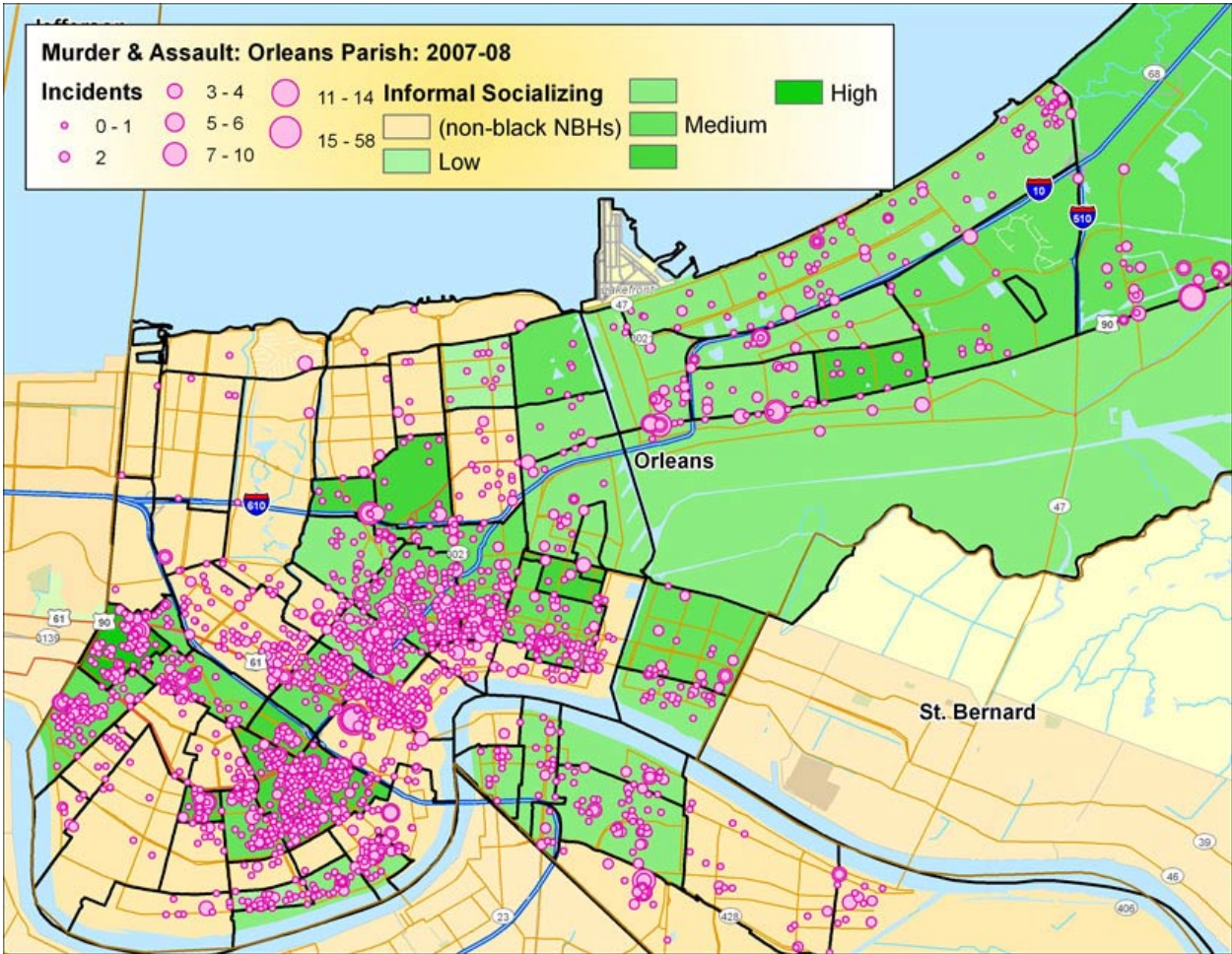
Social Capital – Informal Socializing

- Has a substantial effect on *increasing* violent crime in black neighborhoods
- Has little effect in white neighborhoods, where there is less violent crime to begin with



Effects of Various Factors on Violent Crime (combined murder & assault) in New Orleans Neighborhoods, 2008-09 – Broken down by Race – **ver. 2a w Maps** (NBHs reclassified by race according to 2000 census. Central Business District excluded as outlier.)

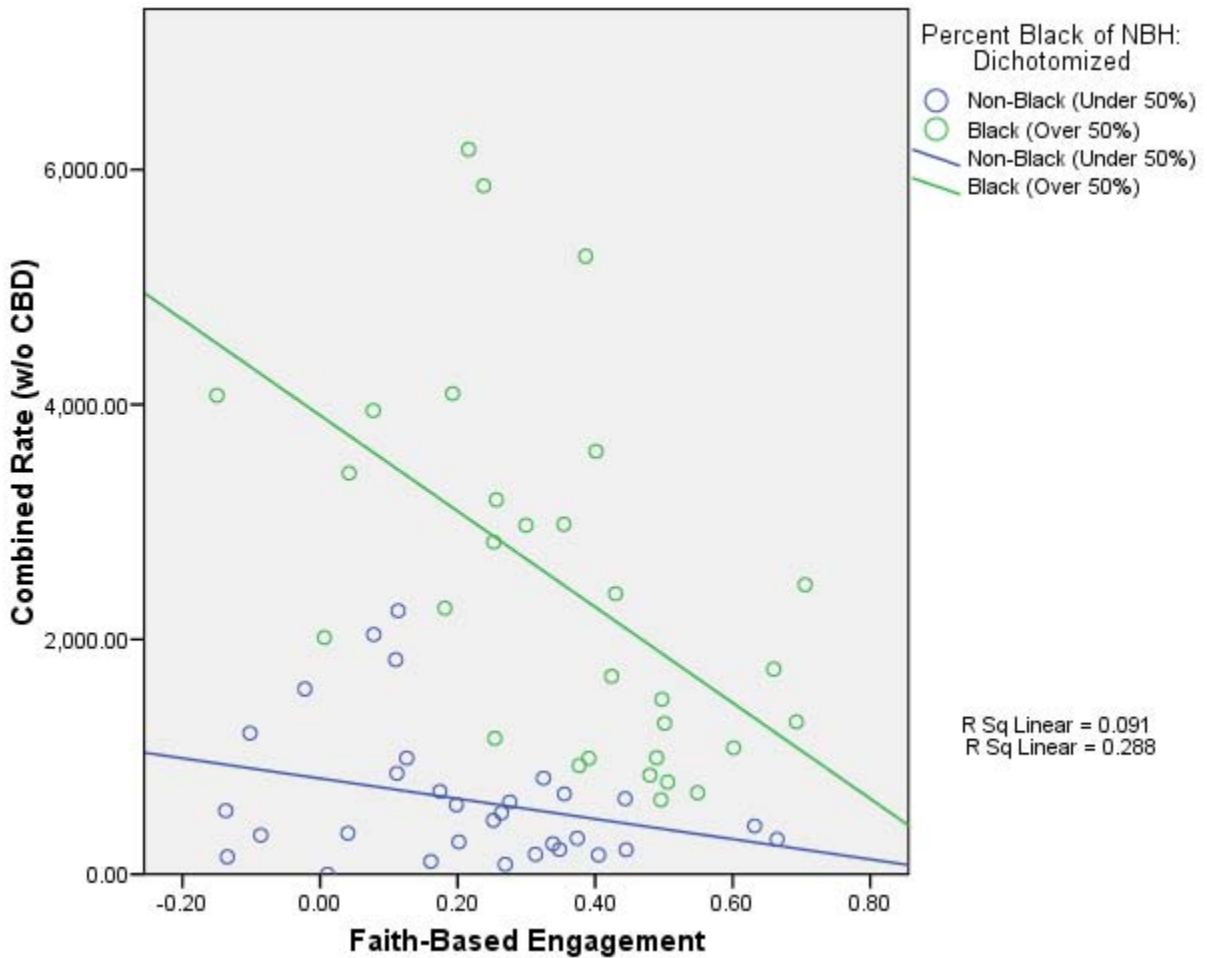
Social Capital – *Informal Socializing* in predominantly black neighborhoods



Effects of Various Factors on Violent Crime (combined murder & assault) in New Orleans Neighborhoods, 2008-09 – Broken down by Race – **ver. 2a w Maps** (NBHs reclassified by race according to 2000 census. Central Business District excluded as outlier.)

Social Capital – Faith-Based Engagement

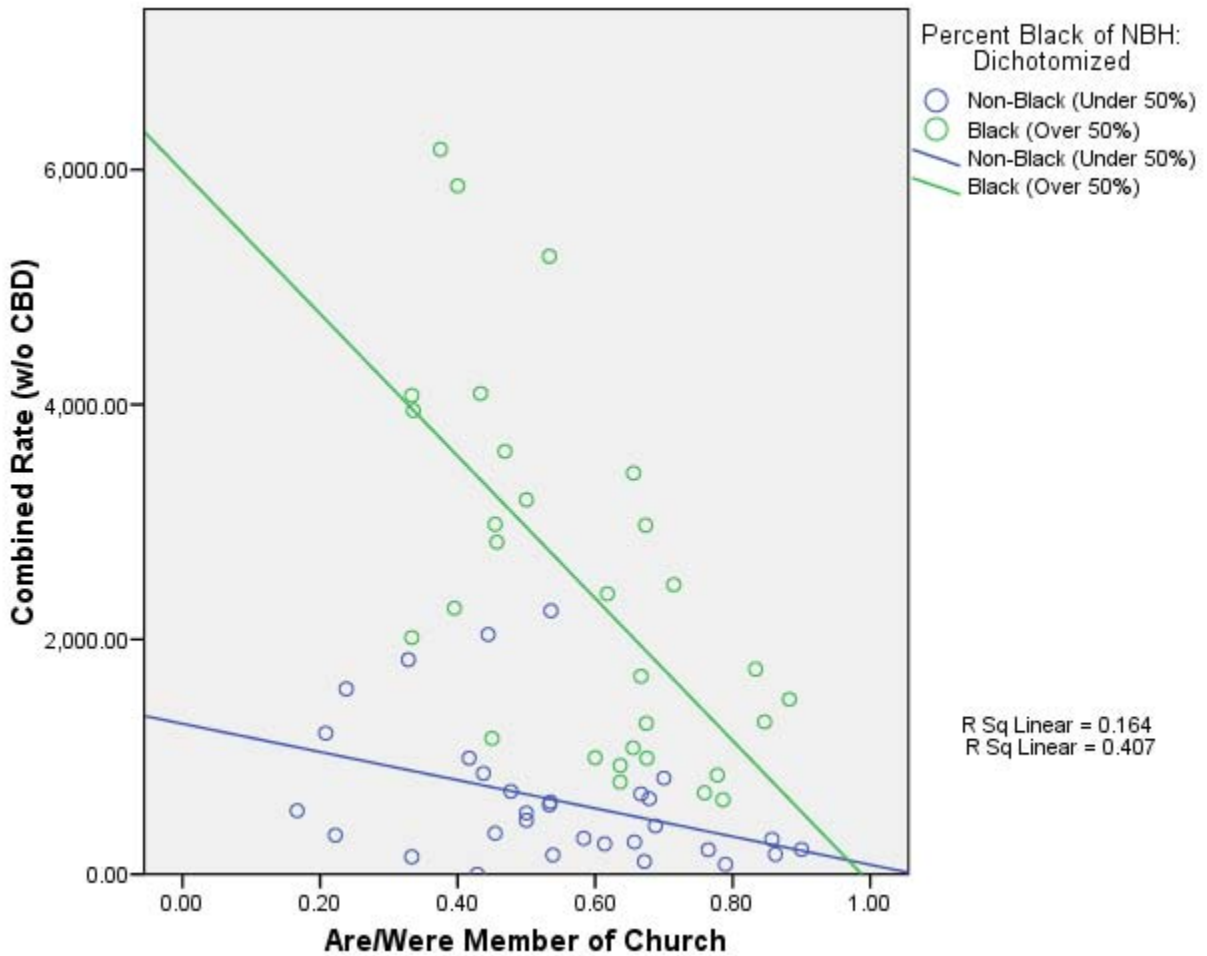
- Has a large effect on reducing violent crime in black neighborhoods
- Has little effect in white neighborhoods, where there is much less violent crime to begin with



Effects of Various Factors on Violent Crime (combined murder & assault) in New Orleans Neighborhoods, 2008-09 – Broken down by Race – **ver. 2a w Maps** (NBHs reclassified by race according to 2000 census. Central Business District excluded as outlier.)

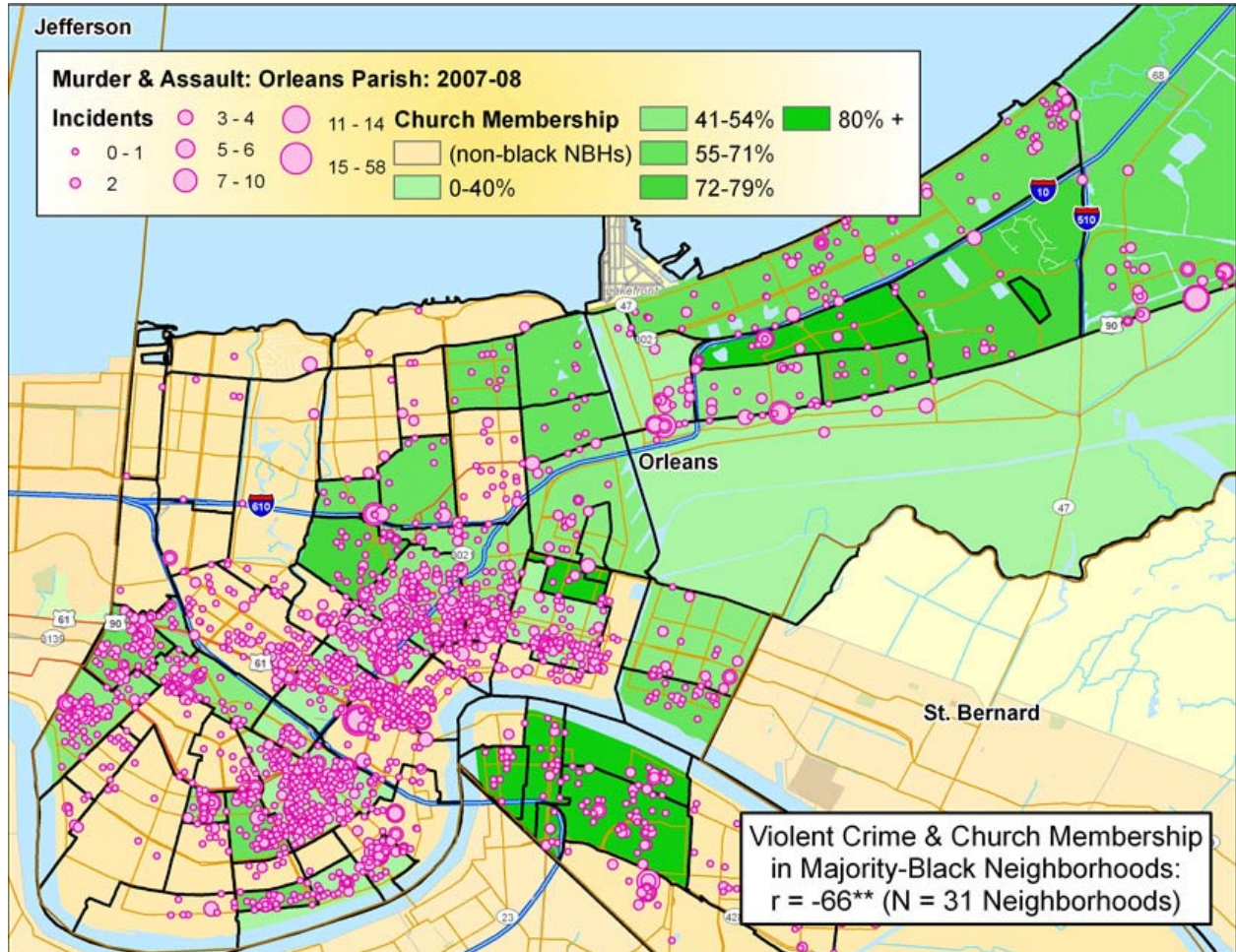
Social Capital – Church Membership

- Has a large effect on reducing violent crime in black neighborhoods
- Has some effect in white neighborhoods, where there is less violent crime to begin with



Effects of Various Factors on Violent Crime (combined murder & assault) in New Orleans Neighborhoods, 2008-09 – Broken down by Race – **ver. 2a w Maps**
(NBHs reclassified by race according to 2000 census. Central Business District excluded as outlier.)

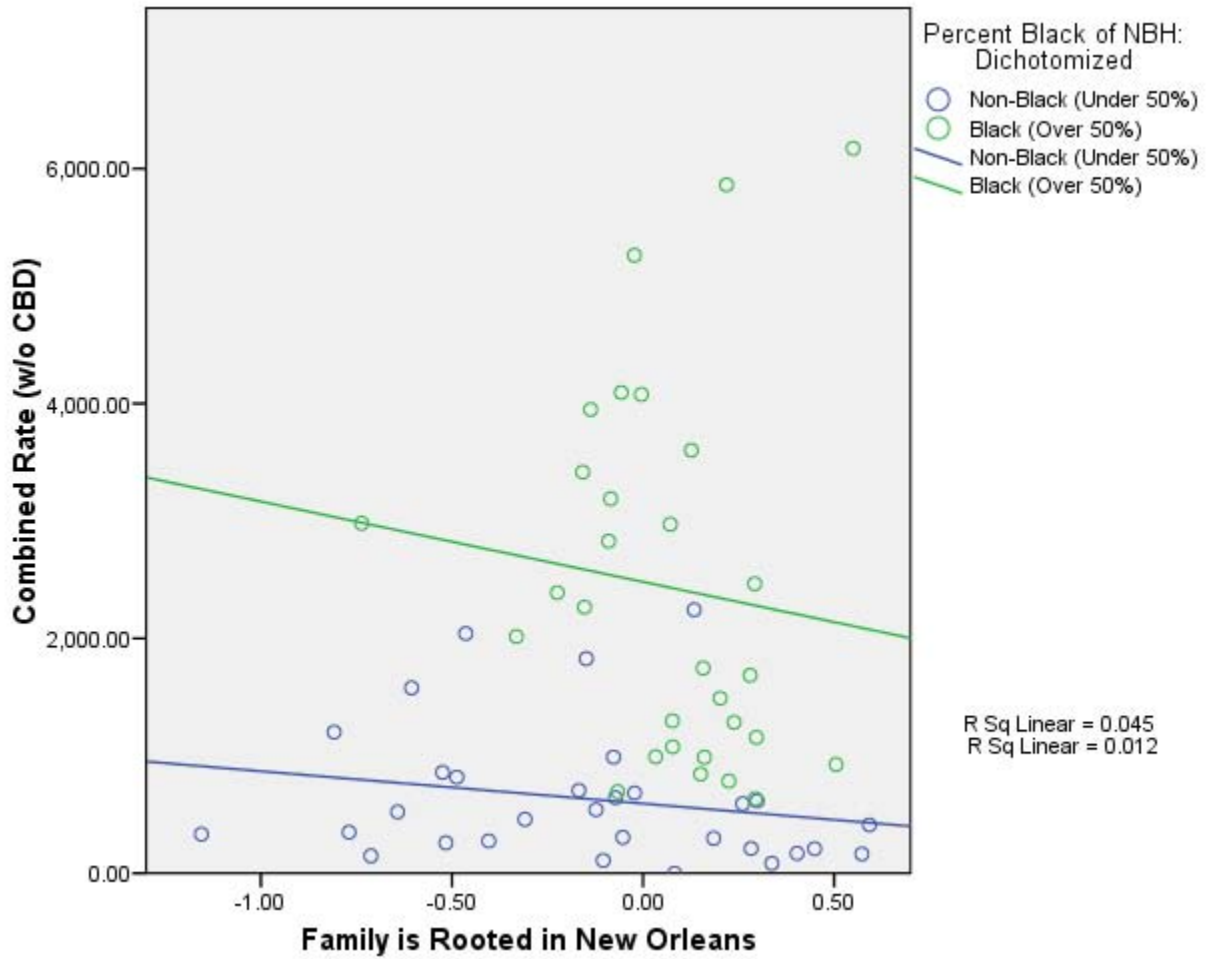
Social Capital – Church Membership in predominantly black neighborhoods



Effects of Various Factors on Violent Crime (combined murder & assault) in New Orleans Neighborhoods, 2008-09 – Broken down by Race – **ver. 2a w Maps**
(NBHs reclassified by race according to 2000 census. Central Business District excluded as outlier.)

Social Capital – Family is Rooted in New Orleans

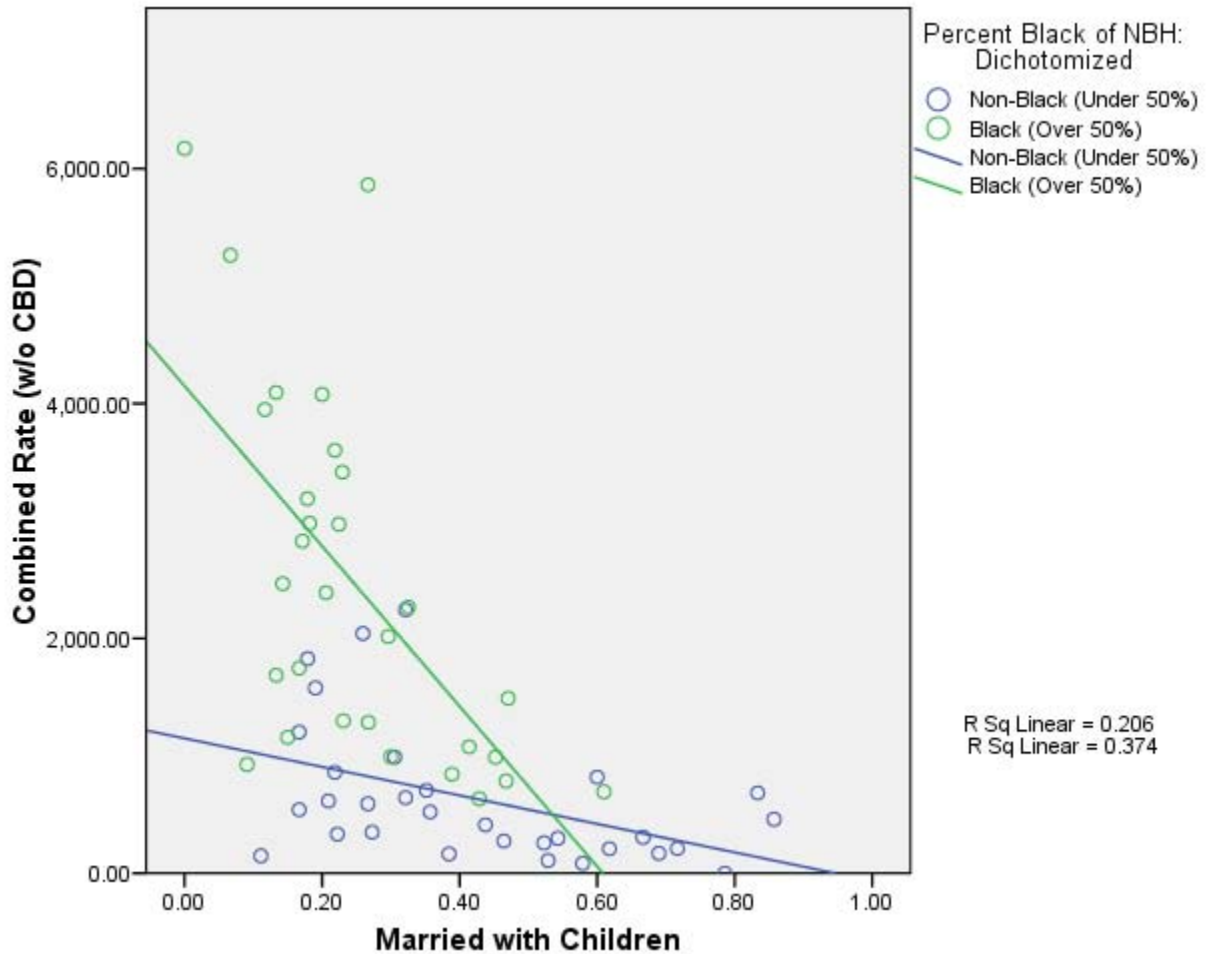
- Has slight effects on reducing violent crime in both black & white neighborhoods
- Absolute levels are lower in white neighborhoods



Effects of Various Factors on Violent Crime (combined murder & assault) in New Orleans Neighborhoods, 2008-09 – Broken down by Race – **ver. 2a w Maps** (NBHs reclassified by race according to 2000 census. Central Business District excluded as outlier.)

Social Capital – Married with Children

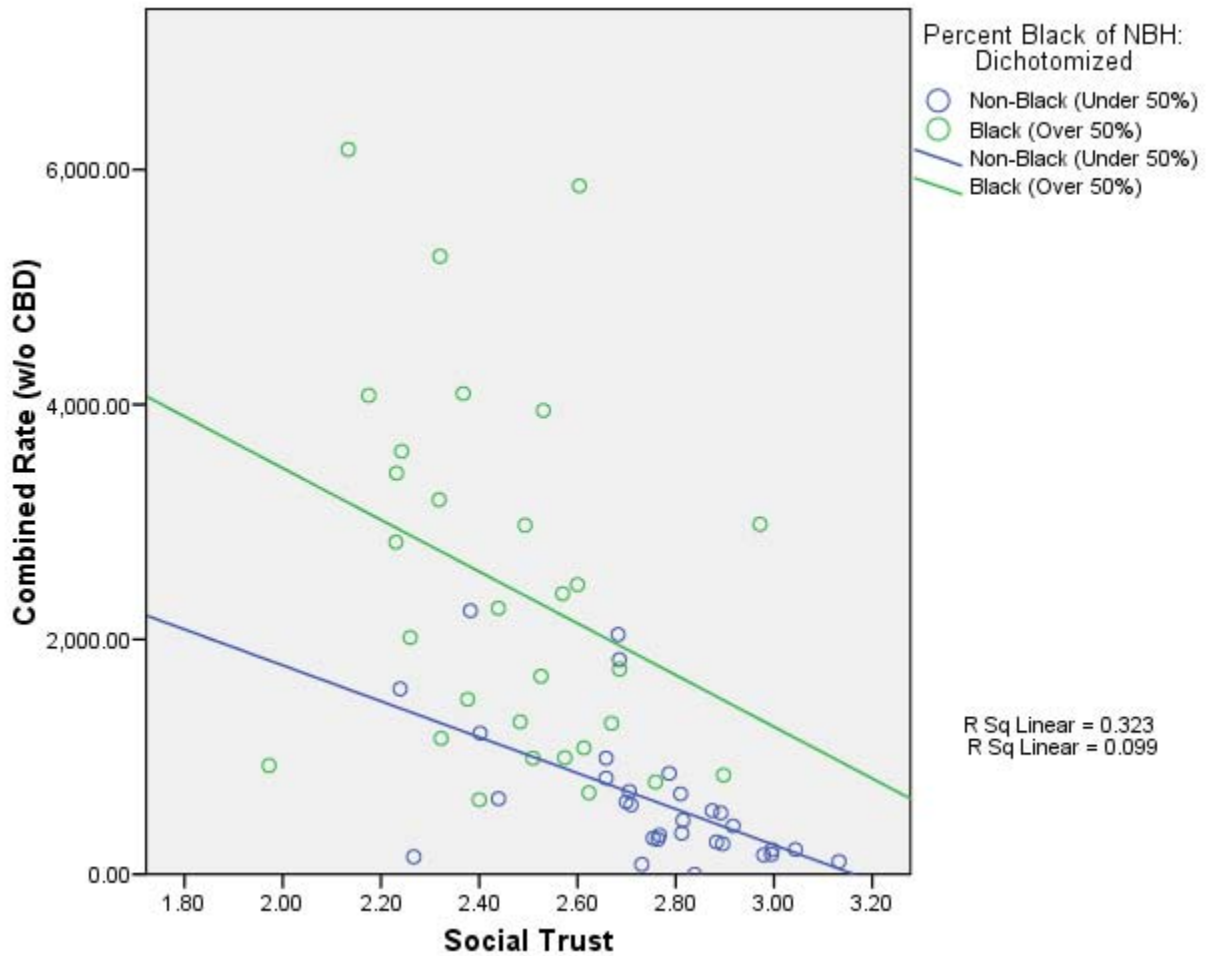
- Has a very large effect on reducing violent crime in black neighborhoods
- Also has a substantial effect in white neighborhoods



Effects of Various Factors on Violent Crime (combined murder & assault) in New Orleans Neighborhoods, 2008-09 – Broken down by Race – **ver. 2a w Maps**
(NBHs reclassified by race according to 2000 census. Central Business District excluded as outlier.)

Social Capital – Social Trust

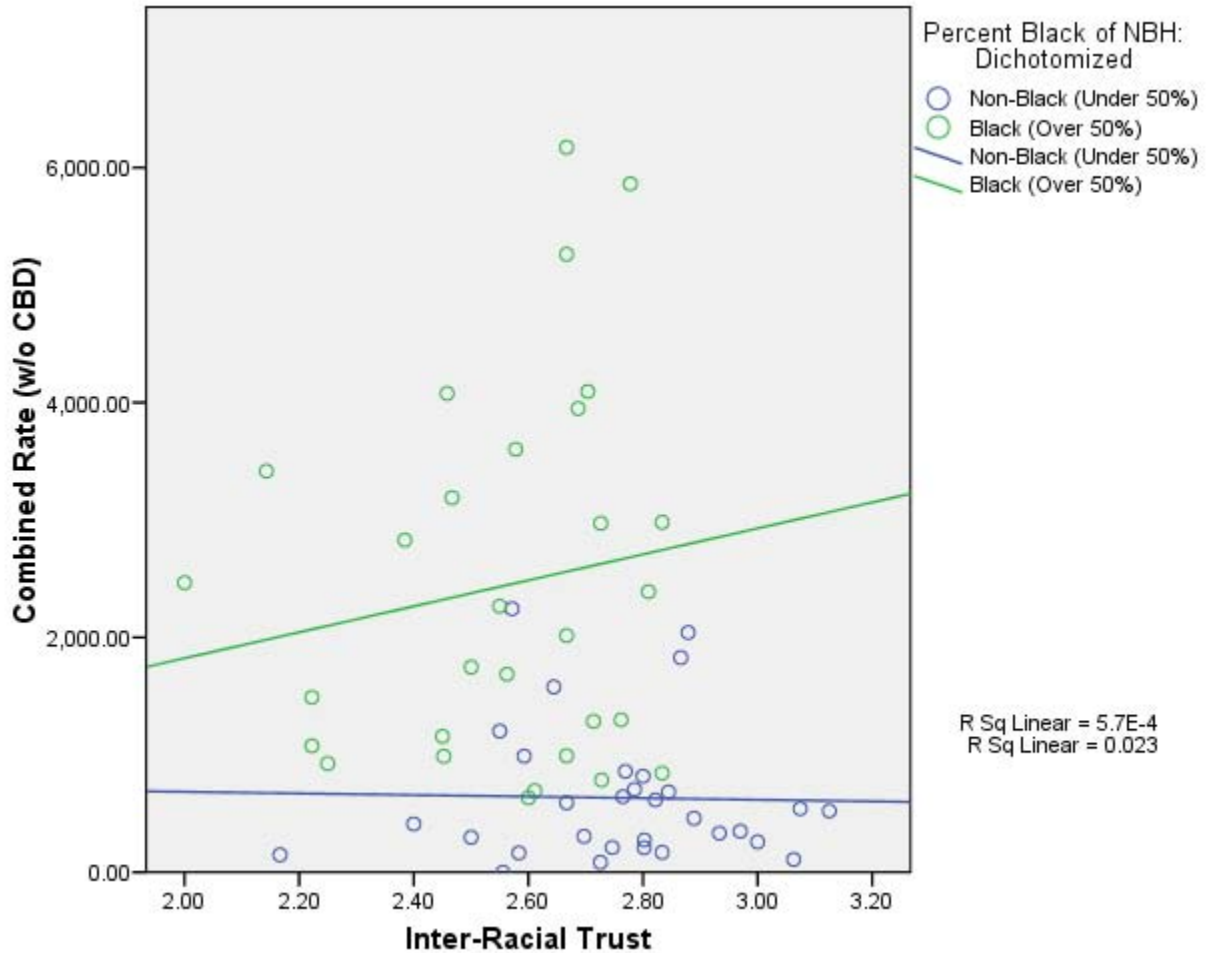
- Has a moderate effect on reducing violent crime in both black & white neighborhoods
- Absolute levels are lower in white neighborhoods



Effects of Various Factors on Violent Crime (combined murder & assault) in New Orleans Neighborhoods, 2008-09 – Broken down by Race – **ver. 2a w Maps** (NBHs reclassified by race according to 2000 census. Central Business District excluded as outlier.)

Social Capital – Inter-Racial Trust

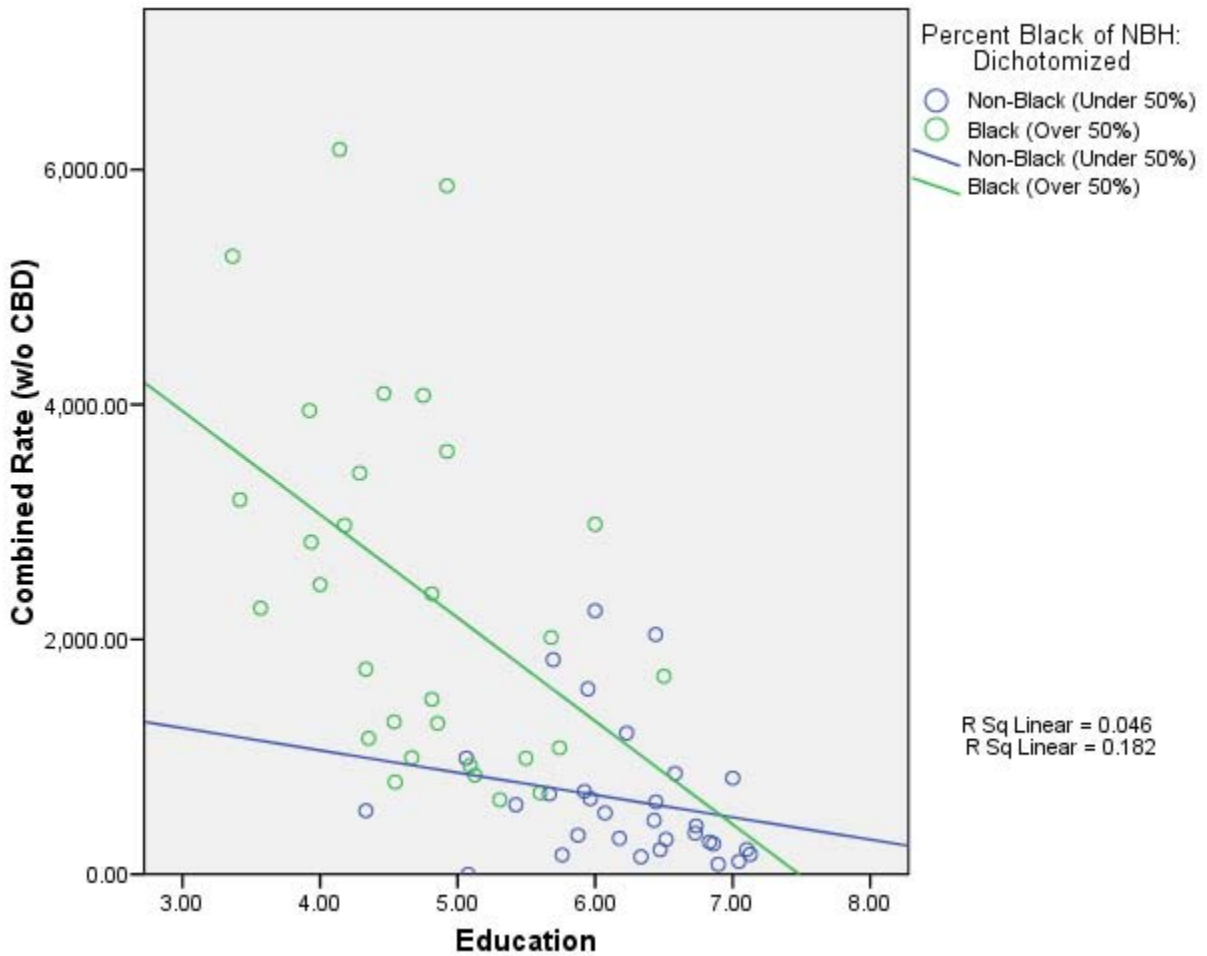
- Has a slight, non-significant, effect on increasing violent crime in black neighborhoods
- Has little effect in white neighborhoods, where there is less violent crime to begin with



Effects of Various Factors on Violent Crime (combined murder & assault) in New Orleans Neighborhoods, 2008-09 – Broken down by Race – **ver. 2a w Maps**
(NBHs reclassified by race according to 2000 census. Central Business District excluded as outlier.)

Socio-Economic Factors – Education

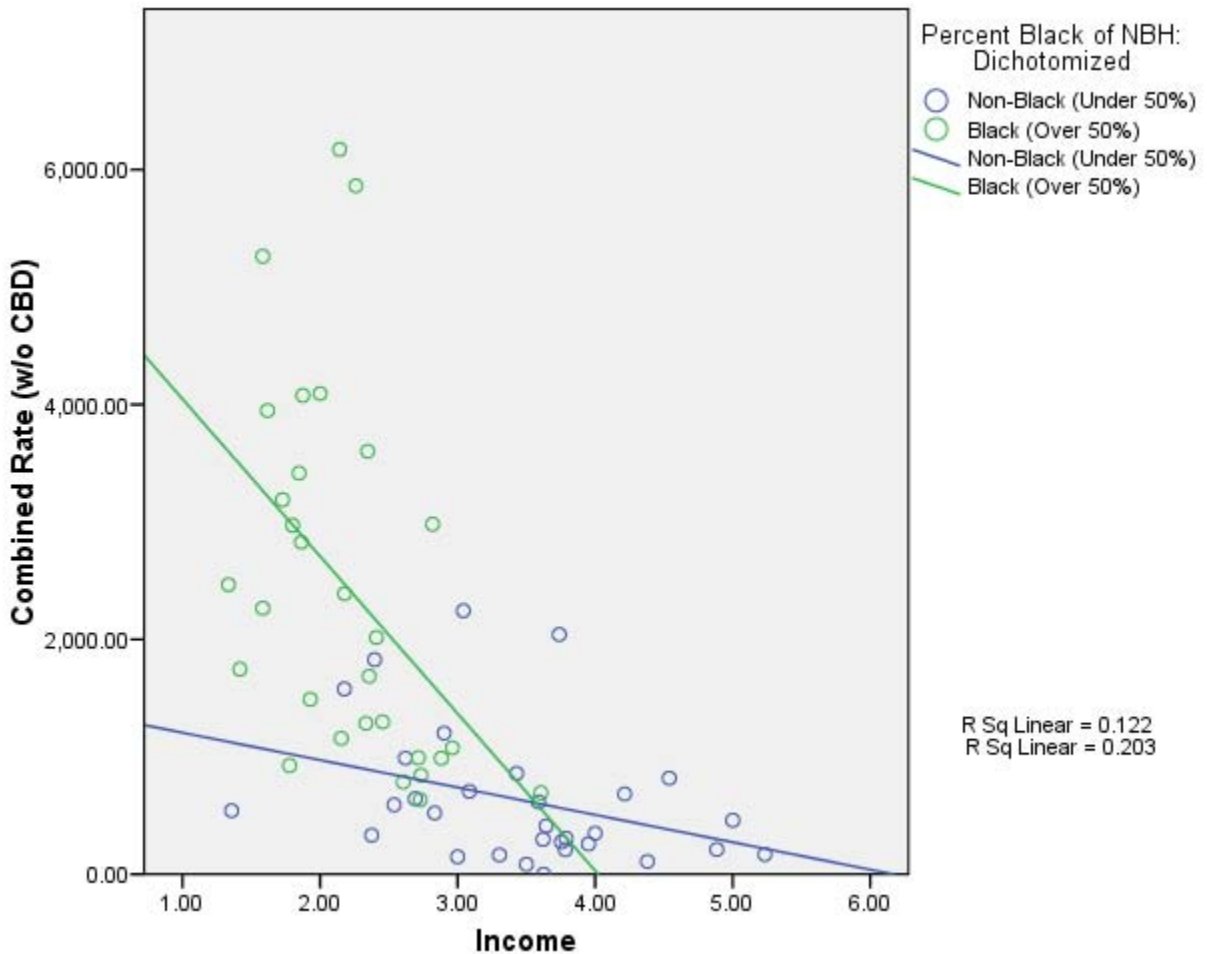
- Has a large effect on reducing violent crime in black neighborhoods
- Has a slight effect in white neighborhoods, where there is less violent crime to begin with



Effects of Various Factors on Violent Crime (combined murder & assault) in New Orleans Neighborhoods, 2008-09 – Broken down by Race – **ver. 2a w Maps** (NBHs reclassified by race according to 2000 census. Central Business District excluded as outlier.)

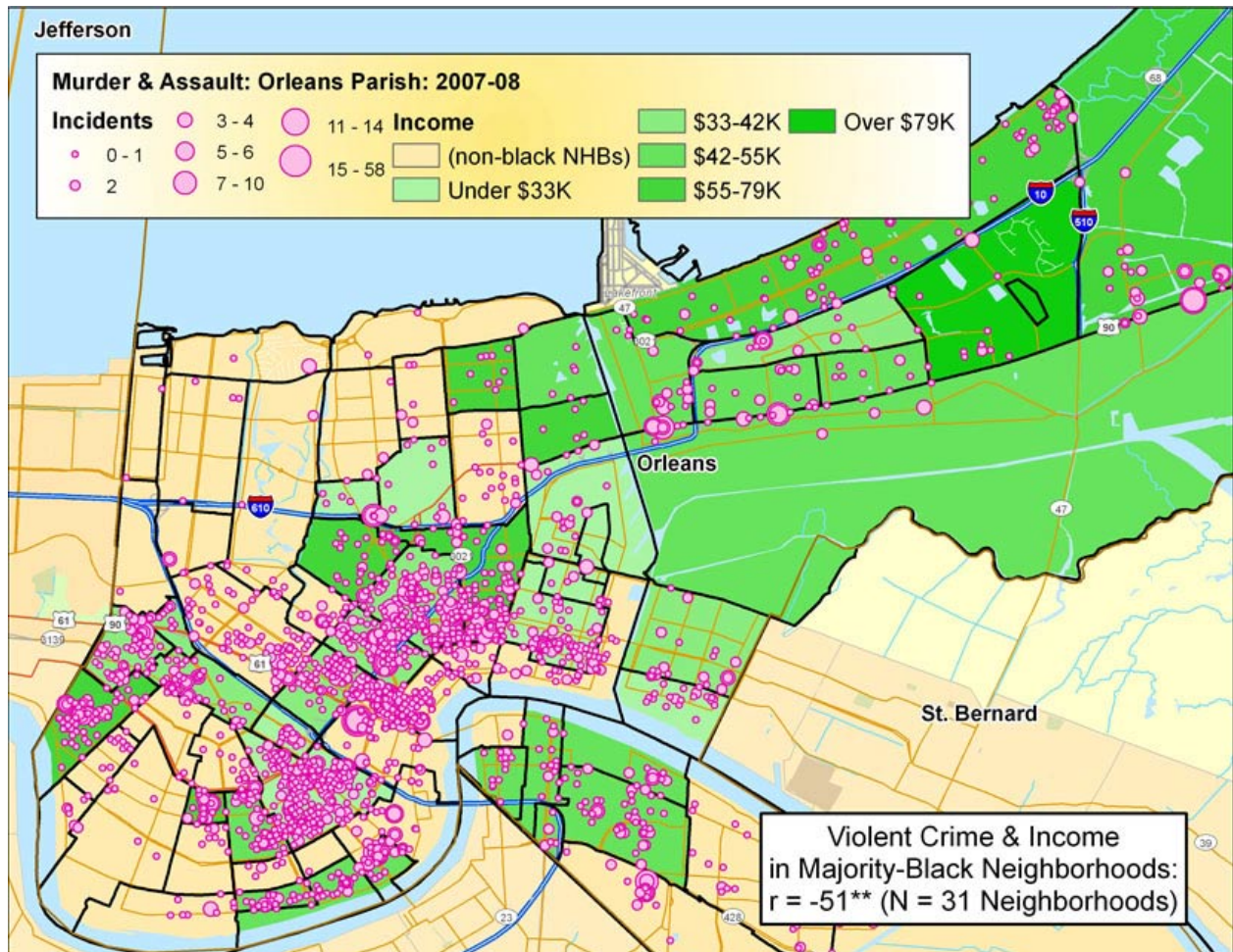
Socio-Economic Factors – Income (ordinal categories)

- Has a large effect on reducing violent crime in black neighborhoods
- Has a moderate effect in white neighborhoods, where there is less violent crime to begin with



Effects of Various Factors on Violent Crime (combined murder & assault) in New Orleans Neighborhoods, 2008-09 – Broken down by Race – **ver. 2a w Maps** (NBHs reclassified by race according to 2000 census. Central Business District excluded as outlier.)

Socio-Economic Factors – *Income (dollar amounts)* in predominantly black neighborhoods



Effects of Various Factors on Violent Crime (combined murder & assault) in New Orleans Neighborhoods, 2008-09 – Broken down by Race – **ver. 2a w Maps**
(NBHs reclassified by race according to 2000 census. Central Business District excluded as outlier.)

Socio-Economic Factors – Unemployment Rate (post-Katrina)

- Has a substantial effect on increasing violent crime in black neighborhoods
- Has little effect in white neighborhoods, where there is less violent crime to begin with

